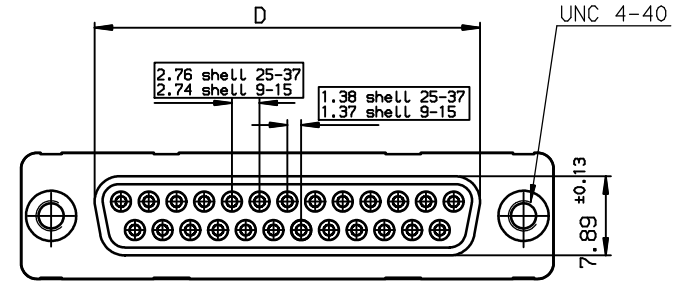
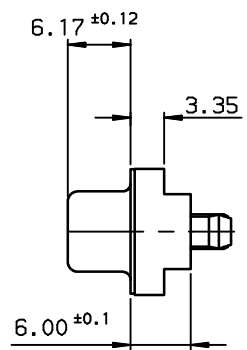
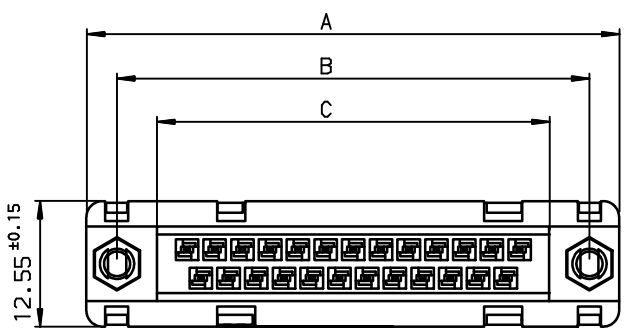


Copyright FCI  
FCI



TIN LEAD PART NUMBER

SHELL	A±0.38	B±0.12	C±0.10	D±0.25	E±0.07	PART NUMBER
09	30.81	24.99	16.96	16.21	10.96	D09S24B.GX00
15	39.14	33.32	25.18	24.54	19.18	D15S24B.GX00
25	53.03	47.04	39.12	38.25	33.12	D25S24B.GX00
37	69.32	63.50	55.68	54.71	49.68	D37S24B.GX00

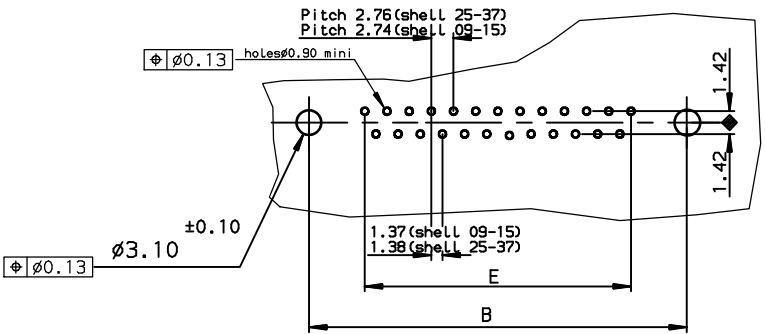
Protection: 4 --> flash AU  
6 --> 0.76µ AU

LEAD FREE PART NUMBER

SHELL	A±0.38	B±0.12	C±0.10	D±0.25	E±0.07	PART NUMBER
09	30.81	24.99	16.96	16.21	10.96	D09S24B.GX00LF
15	39.14	33.32	25.18	24.54	19.18	D15S24B.GX00LF
25	53.03	47.04	39.12	38.25	33.12	D25S24B.GX00LF
37	69.32	63.50	55.68	54.71	49.68	D37S24B.GX00LF

Protection: 4 --> flash AU  
6 --> 0.76µ AU

PC card drilling dimensions(after plating)  
(thickness 2.40±0.20mm)



GENERAL CHARACTERISTICS AND ROHS INFORMATIONS:  
SEE DRAWING C01-8646-0000

rev	ecn no	dr	date
C	-	-	1996/09/09
D	LS05-001	MPE	2005/03/10
E	LS05-0056	MPE	2005/06/28
F	LS06-0097	LGO	2006/07/29
-	-	-	-
-	-	-	-
-	-	-	-

www.fciconnect.com		surface ISO 1302 ✓	tolerance std ISO 406 ISO 1101	projection mm
TOLERANCES UNLESS OTHERWISE SPECIFIED				
Dr	LELEON	1992/09/16	ANGULAR	LINEAR
Eng	PESSON	1992/09/16	0.x	±0.1
Chr	LEGARE	1992/09/16	0.xx	±0.1
Appr	LEGARE	1992/09/16	0.xxx	±0.1
Product family			D-SUB	Spec ref -
title FEMALE CONNECTOR STD EURO			size A3	
straight solder type for			Scale 2	
catalog no			ECN LS06-0097	
FCI			C01-8646-0126	
CUSTOMER			sheet 1 of 1	

European Views