



10-9157-015-000-006

PREFIX _____

SERIES _____

NO. OF WAYS _____

COAX _____

CODE	DESCRIPTION
000	NO COAX
001	WITH COAX

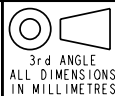
CONTACT TYPE _____

CODE	TYPE	CONTACT PLATING
006	WIRE	NICKEL - GOLD NOSE - PURE TIN TAILS
007	SMT	NICKEL - GOLD NOSE - PURE TIN TAILS

PACKING DETAILS

TYPE	PACK SIZE	DESCRIPTION
WIRE	20	TUBE
SMT	300	TAPE AND REEL

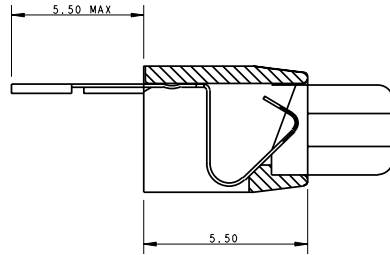
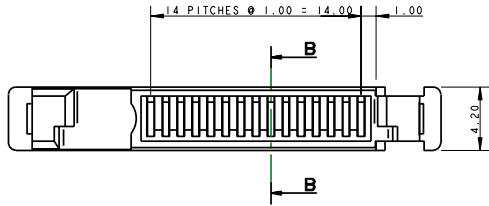
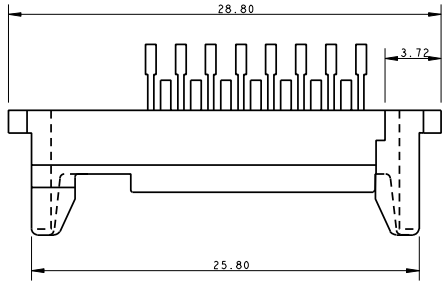
ELCO EUROPE (A DIVISION OF AVX LTD.) CONFIDENTIAL PROPRIETARY
 THE DRAWING ON THIS PRINT AND INFORMATION THEREWITH ARE
 PROPRIETARY TO ELCO EUROPE (A DIVISION OF AVX LTD.) AND
 SHALL NOT BE USED OR DISCUSSED IN WHOLE OR IN PART
 WITHOUT ELCO EUROPE'S WRITTEN CONSENT.



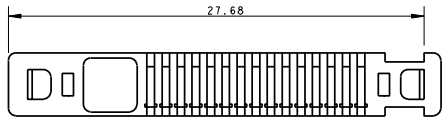
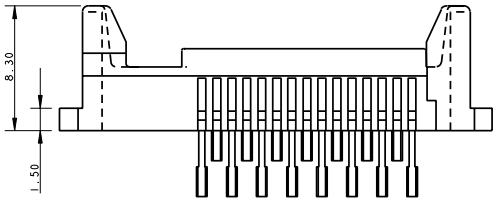
9157 PLUG WIRE WITHOUT COAX



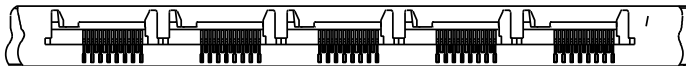
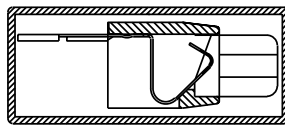
ELCO EUROPE (A DIVISION OF AVX LTD.) CONFIDENTIAL PROPRIETARY THE DRAWING ON THIS PRINT AND INFORMATION THEREWITH ARE PROPRIETARY TO ELCO EUROPE (A DIVISION OF AVX LTD.) AND SHALL NOT BE USED OR DISCUSSED IN WHOLE OR IN PART WITHOUT ELCO EUROPE'S WRITTEN CONSENT.



SECTION B-B



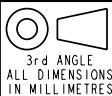
PACKING DETAIL



- NOTES :-
1. ALL DIMENSIONS SHOWN ARE REFERENCE DIMENSIONS.
 2. PACKED IN TUBES, 20 PIECES PER TUBE.
 3. FOR FULL PRODUCT INFORMATION REFER TO ELCO SPECIFICATION 201-01-079.

SHEET 2 OF 5

Release No.
History
100909
102000
102009
102068
102211



ELCO

© COPYRIGHT ELCO EUROPE
NOT TO BE DISCLOSED OR COPIED
WITHOUT WRITTEN PERMISSION

Drawn
JN

Size
BV

Description
9157 PLUG CONNECTOR - ORDERING CODE

Part Number
10-9157-015-01S

DATE
02-Feb-05

Issue
5

A

I

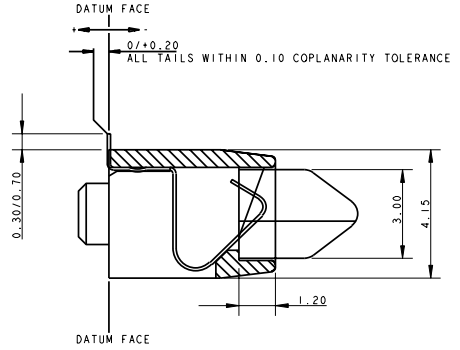
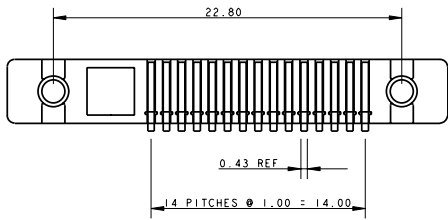
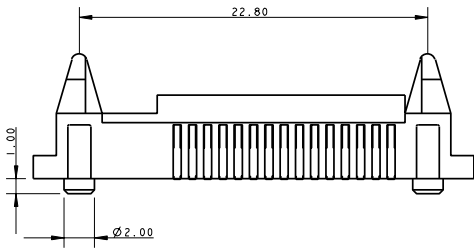
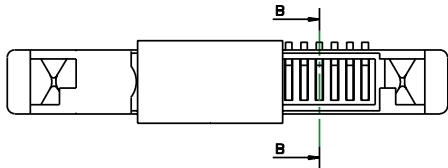
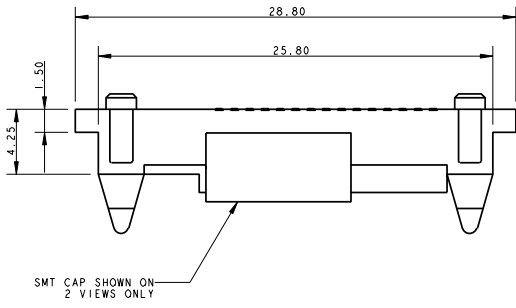
B

9157 PLUG SMT WITHOUT COAX

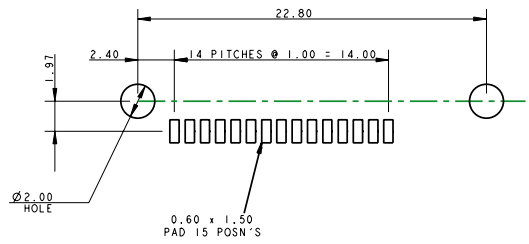


**RoHS
COMPLIANT**

ELCO EUROPE (A DIVISION OF AVX LTD.) CONFIDENTIAL PROPRIETARY
THE DRAWING ON THIS PRINT AND INFORMATION THEREWITH ARE
PROPRIETARY TO ELCO EUROPE (A DIVISION OF AVX LTD.) AND
SHALL NOT BE USED OR DISCUSSED IN WHOLE OR IN PART
WITHOUT ELCO EUROPE'S WRITTEN CONSENT.

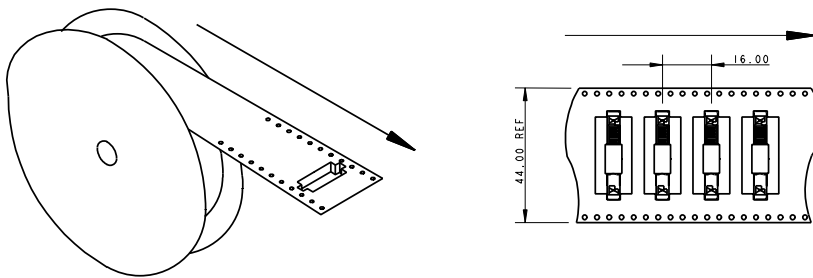


SECTION B-B



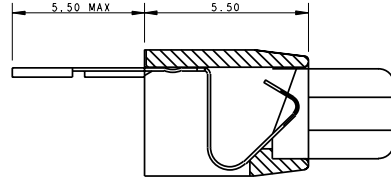
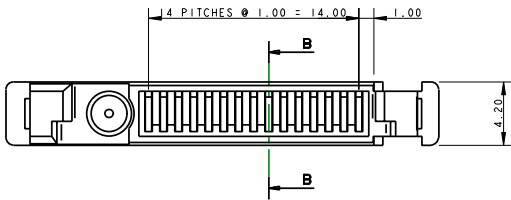
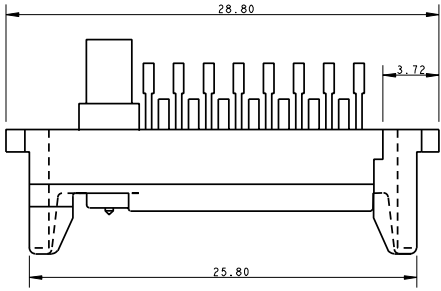
P.C.B. LAYOUT

PACKING DETAILS

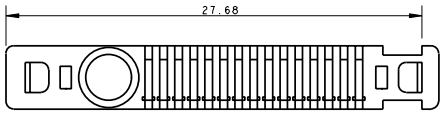
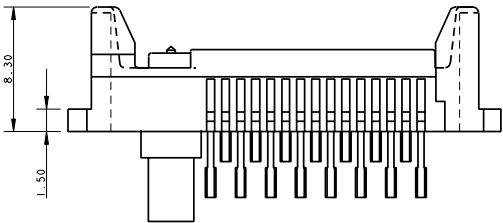


- NOTES :-
 1. ALL DIMENSIONS SHOWN ARE REFERENCE DIMENSIONS.
 2. PACKED IN TAPE AND REEL, 300 PIECES PER REEL.
 3. FOR FULL PRODUCT INFORMATION REFER TO
 ELCO SPECIFICATION 201-01-079

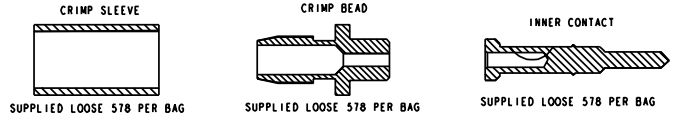
9157 PLUG WIRE WITH COAX



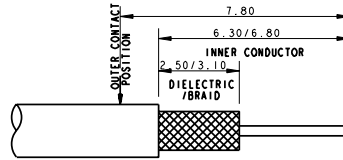
SECTION B-B



CIMPING DETAILS

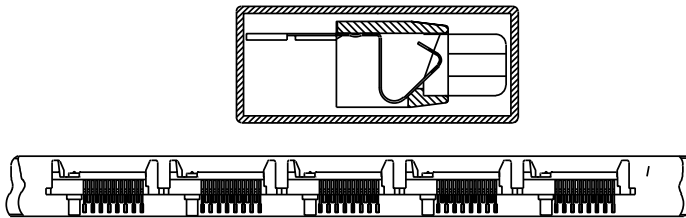


WIRE STRIPPING DETAIL



ELCO EUROPE (A DIVISION OF AVX LTD.) CONFIDENTIAL PROPRIETARY THE DRAWING ON THIS PRINT AND INFORMATION THEREWITH ARE PROPRIETARY TO ELCO EUROPE (A DIVISION OF AVX LTD.) AND SHALL NOT BE USED OR DISCUSSED IN WHOLE OR IN PART WITHOUT ELCO EUROPE'S WRITTEN CONSENT.

PACKING DETAIL



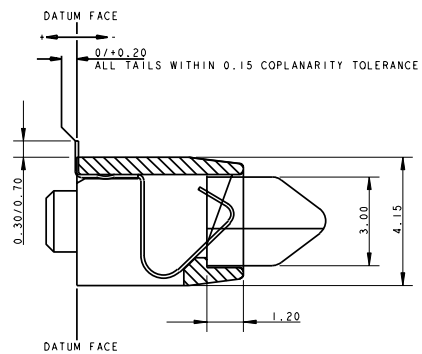
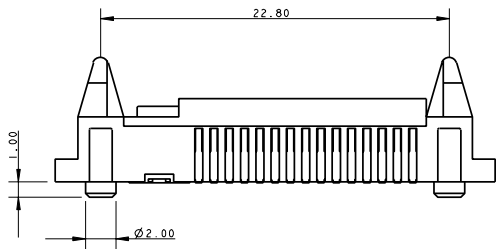
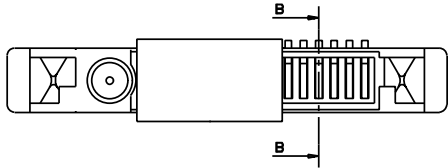
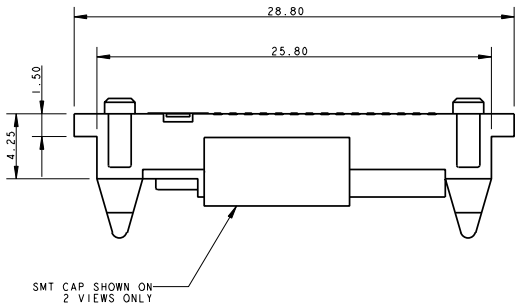
- NOTES :-
1. TOOL TO CRIMP BARREL ELCO PART NUMBER 06-9157-7117-01-000.
 2. ALL DIMENSIONS SHOWN ARE REFERENCE DIMENSIONS UNLESS TOLERANCED.
 3. PACKED IN TUBES, 20 PIECES PER TUBE.
 4. FOR FULL PRODUCT INFORMATION REFER TO ELCO SPECIFICATION 201-01-079

9157 PLUG SMT WITH COAX

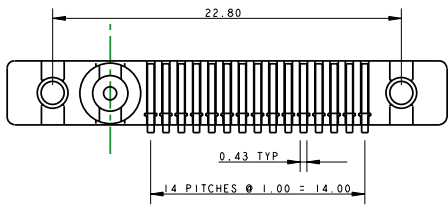


**RoHS
COMPLIANT**

ELCO EUROPE (A DIVISION OF AVX LTD.) CONFIDENTIAL PROPRIETARY THE DRAWING ON THIS PRINT AND INFORMATION THEREWITH ARE PROPRIETARY TO ELCO EUROPE (A DIVISION OF AVX LTD.) AND SHALL NOT BE USED OR DISCUSSED IN WHOLE OR IN PART WITHOUT ELCO EUROPE'S WRITTEN CONSENT.

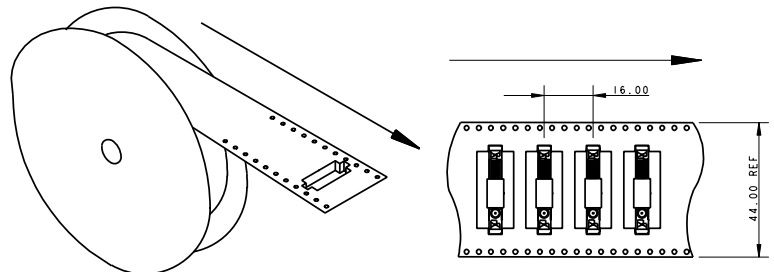
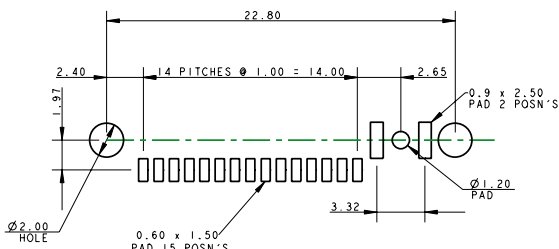


SECTION B-B



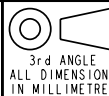
PACKING DETAILS

P.C.B. LAYOUT



- NOTES :-
 1. ALL DIMENSIONS SHOWN ARE REFERENCE DIMENSIONS UNLESS TOLERANCED.
 2. PACKED IN TAPE AND REEL, 300 PIECES PER REEL.
 3. FOR FULL PRODUCT INFORMATION REFER TO ELCO SPECIFICATION 201-01-079

Release No.	100909
History	102000
	102009
	102068
	102211



ELCO
 © COPYRIGHT ELCO EUROPE
 NOT TO BE DISCLOSED OR COPIED
 WITHOUT WRITTEN PERMISSION

Drawn
JN
Size
BV

Description
9157 PLUG CONNECTOR - ORDERING CODE
Part Number
10-9157-015-01S

DATE
02-Feb-05
Issue
5