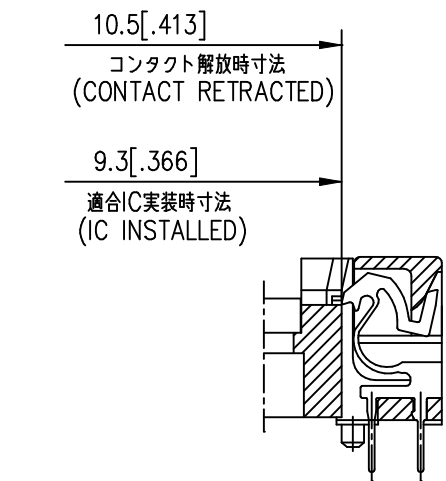
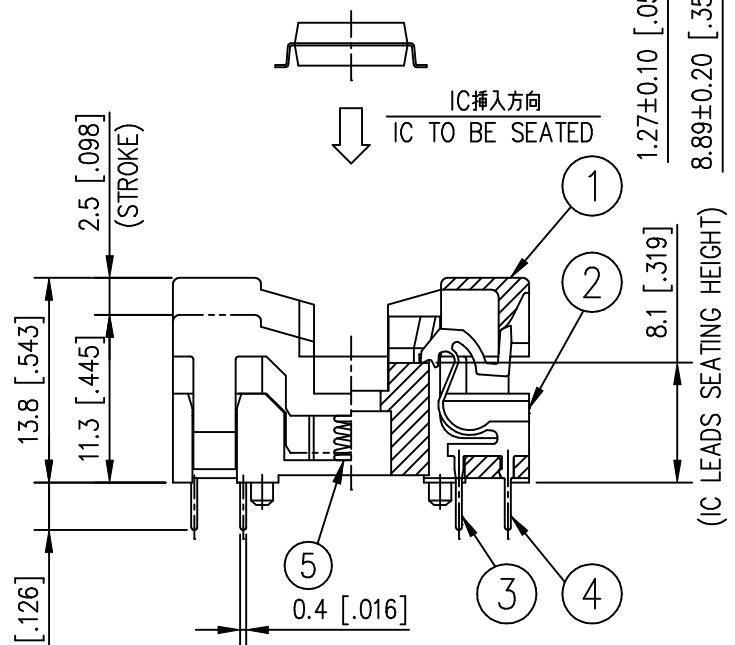
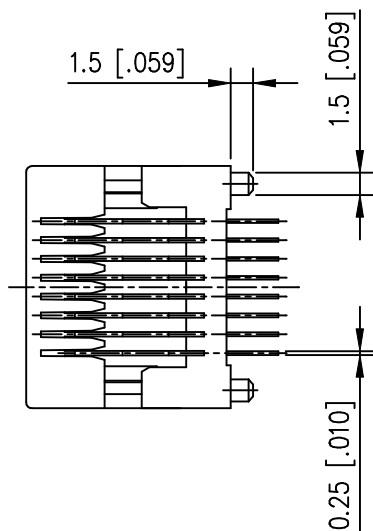
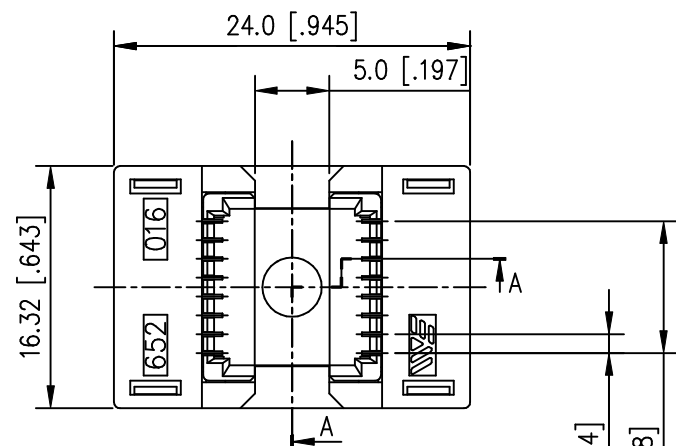


REV	DATE	ECO NO	BY
0	July 27 1999	ERN99165	S.T



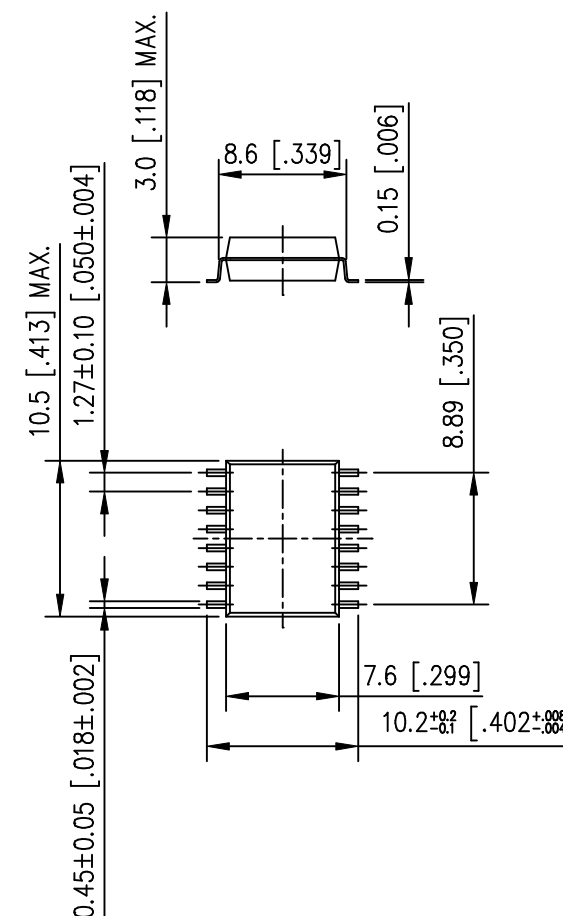
A-A断面
SECTION A-A

性能

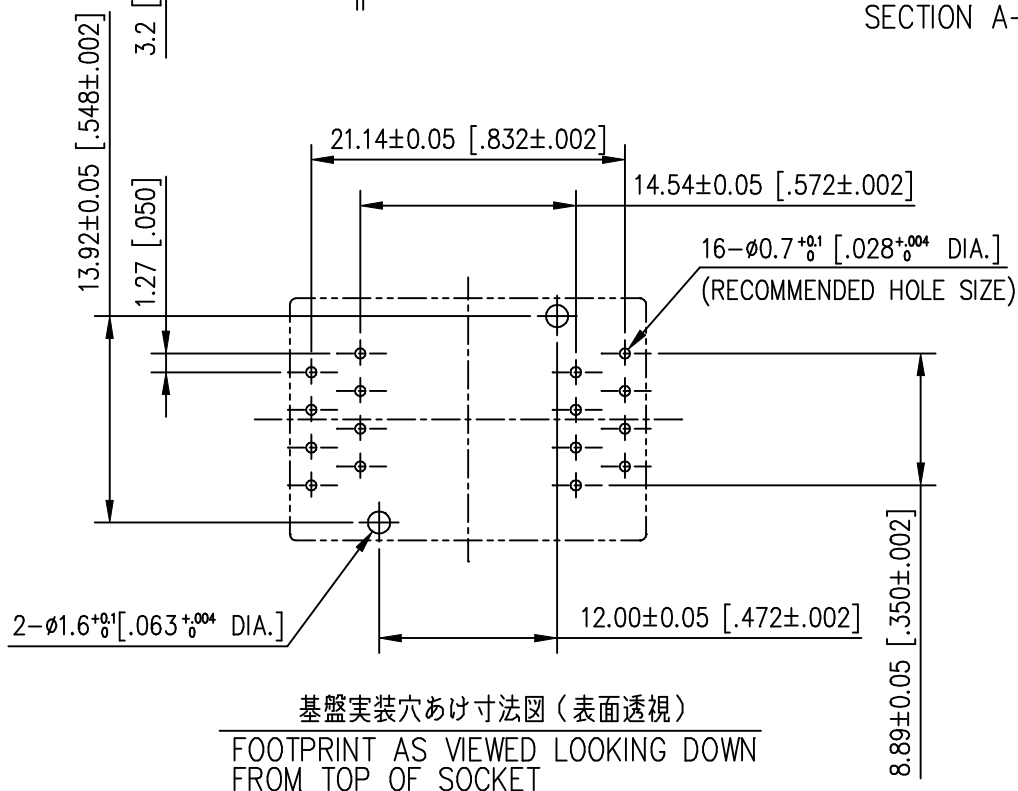
- 絶縁抵抗：DC500Vで測定し、1000MΩ以上のこと。
- 耐電圧：AC600Vを1分間印加して異常の無いこと。
- 接触抵抗：開回路電圧20mV以下にて測定し、30mΩ以下のこと。
- 使用温度：-40?~+150?

Performance

- Insulation Resistance : 1000MΩ min. at 500V.D.C
- Dielectric Withstanding Voltage : 600V.A.C(RMS)
- Contact Resistance : 30mΩ max. at 20mV max.
- Temperature Range : -40?~+150?



適合IC外形図
RECOMMENDED IC(REF.)



基盤実装穴あけ寸法図 (表面透視)

FOOTPRINT AS VIEWED LOOKING DOWN FROM TOP OF SOCKET

⑤	SPRING	SUS	2	
④	CONTACT-(2)	Be Cu	8	PLATING : Au
③	CONTACT-(1)	Be Cu	8	PLATING : Au
②	BASE	PEI	1	COLOR : BLACK
①	COVER	PEI	1	COLOR : BLACK
P.NO	PART DESCRIPTION	MATERIAL	QTY	NOTE

THIS DOCUMENT CONTAINS PROPRIETARY DESIGNS, SPECIFICATIONS, DATA, INFORMATION AND TECHNICAL MATERIAL THAT ARE THE SOLE PROPERTY OF WELLS-CTI. THIS INFORMATION IS TO BE HELD AND TREATED BY ITS RECIPIENT ON A CONFIDENTIAL BASIS, AND IS NOT TO BE SHOWN OR DISCLOSED TO THIRD PART WITHOUT THE WRITTEN CONSENT OF WELLS-CTI. THIS DATA DOES NOT CONVEY MANUFACTURING RIGHTS TO ANY ITEMS SHOW.

この図面に含まれる技術情報の一部は WELLS-CTI 単独の所有権を有する。従って情報非開示の原則に基づき WELLS-CTI 社の書面による同意無しにこの図面を第三者に開示すること及び製造目的に使用することを禁ずる。

GENERAL TOLERANCES		
±0.3 [±.012]		
UNIT	SCALE	ANGLE
mm[in.]	2X	3rd.
DRAWN	/	/
ENGINEER	/	/
CHECKED	/	/
APPROVED	/	/



ウエルズ・シーティアイ株式会社

PART NAME		SOP 16P SOCKET	
PART NUMBER		652-0162211E001	
DWG NUMBER		652MSA011	
REV	0		
SHEET	1/1		