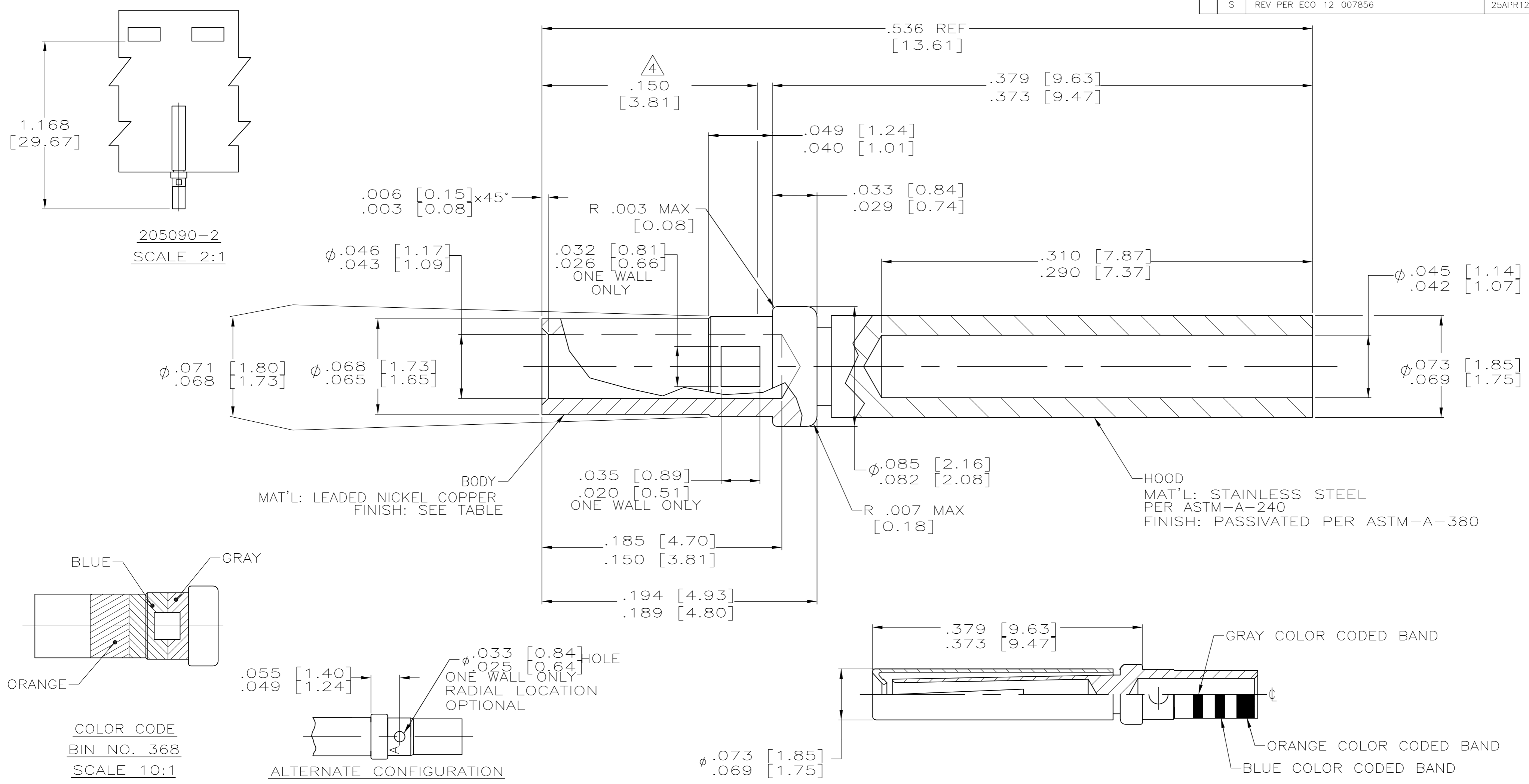


LOC		DIST		REVISIONS			
P	LTR	DESCRIPTION	DATE	DWN	APVD		
DF	DO	S	REV PER ECO-12-007856	25APR12	PY	RL	



- ALL DIMENSIONS APPLY AFTER PLATING.
- THIS DRAWING COMPLIES WITH SPECIFICATION MIL-C-39029/63 AND M24308/10-1.
- ALL DIAMETERS CONCENTRIC WITH EACH OTHER WITHIN .004 T.I.R.
- POINT OF PLATING MEASUREMENT .150 [3.81] FROM WIRE BARREL END OF CONTACT.
- ALL SURFACES HAVE  $\sqrt{63}$  OR BETTER FINISH.
- GOLD PLATED PER ASTM-B-488 TYPE 2, GRADE C, CLASS 1.25 OVER NICKEL PER QQ-N-290 IN MATING AREAS. GOLD PLATED PER ASTM-B-488 OVER NICKEL PER QQ-N-290 IN NON MATING AREAS.
- GOLD PLATED PER ASTM-B-488 TYPE 3, GRADE C, CLASS .75 OVER NICKEL PER QQ-N-290.
- SLEEVE MAY BE CRIMPED, DIMPLED OR PRESS FIT TO BODY
- MANUFACTURER'S LOGO ("A" OR "- . .") LOCATION OPTIONAL.

SUPERSEDED BY 1218267-3	NO	$\nabla$	LOOSE PIECE	205090-7
	YES	$\nabla$	TAPE MOUNTED	205090-2
	YES	$\nabla$	LOOSE PIECE	205090-1
COLOR CODE	FINISH	DESCRIPTION	PART NUMBER	

THIS DRAWING IS A CONTROLLED DOCUMENT.		DWN C.C.THOMAS 8-17-04	<b>STE</b> TE Connectivity	
DIMENSIONS: INCHES		CHK D.MILLER 8-17-04		
TOLERANCES UNLESS OTHERWISE SPECIFIED:		APVD D.MILLER 8-17-04	NAME CONTACT ASSY, SOCKET, SIZE 20, AMPLIMITE	
0 PLC ± -		PRODUCT SPEC	SIZE A2	
1 PLC ± -		APPLICATION SPEC	CAGE CODE 00779	
2 PLC ± -		WEIGHT	DRAWING NO C=205090	
3 PLC ± .005 [0.13]		RESTRICTED TO	SHEET 1 of 1	
4 PLC ± -		CUSTOMER DRAWING	REV S	
ANGLES ± -		SCALE 20:1		
SEE CALLOUTS				