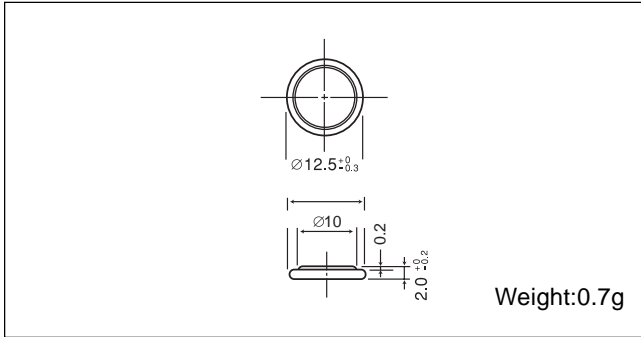


# Poly-carbonmonofluoride Lithium Coin Batteries: Individual Specifications

## BR1220

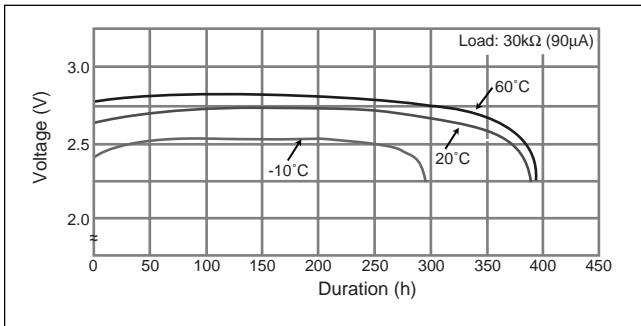
### ■ Dimensions(mm)



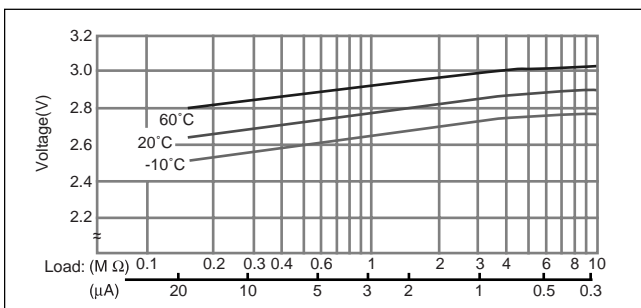
### ■ Specification

|                               |           |
|-------------------------------|-----------|
| Nominal voltage (V)           | 3         |
| Nominal capacity (mAh)        | 35        |
| Continuous standard load (mA) | 0.03      |
| Operating temperature (C)     | -30 ~ +80 |

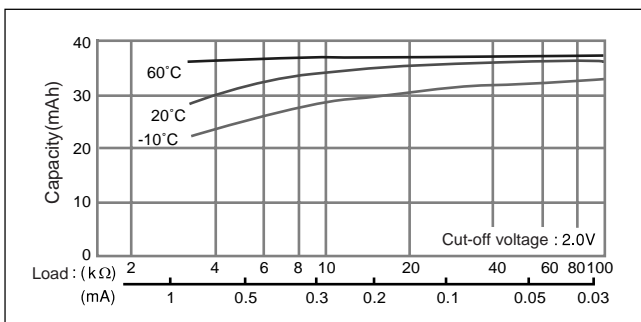
### ■ Temperature Characteristics



### ■ Operating voltage vs. load resistance (voltage at 50% discharge depth)

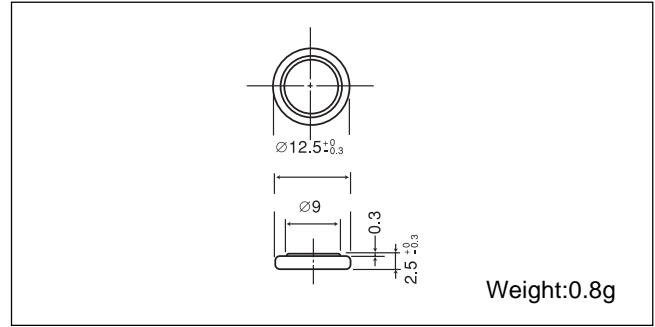


### ■ Capacity vs. load resistance



## BR1225

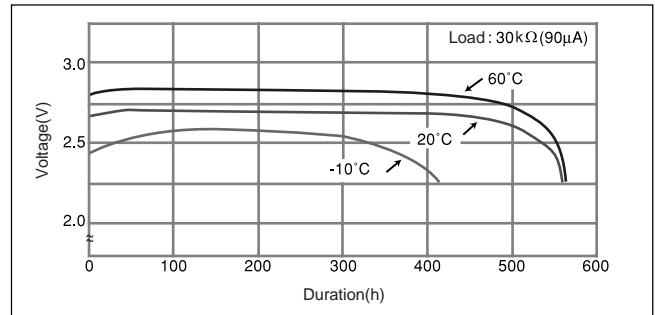
### ■ Dimensions(mm)



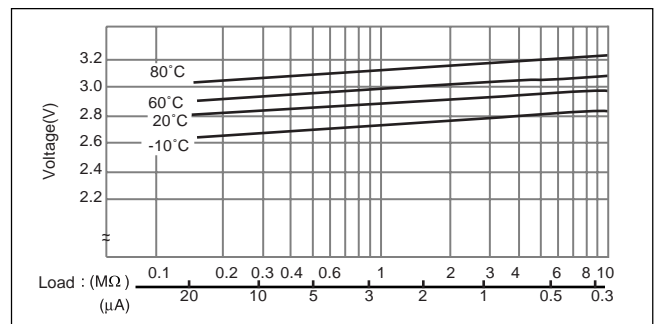
### ■ Specification

|                               |           |
|-------------------------------|-----------|
| Nominal voltage (V)           | 3         |
| Nominal capacity (mAh)        | 48        |
| Continuous standard load (mA) | 0.03      |
| Operating temperature (C)     | -30 ~ +80 |

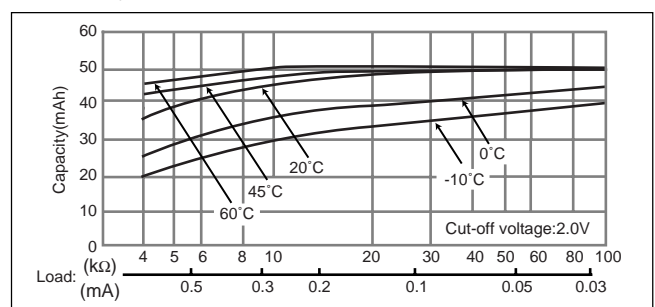
### ■ Temperature Characteristics



### ■ Operating voltage vs. load resistance (voltage at 50% discharge depth)



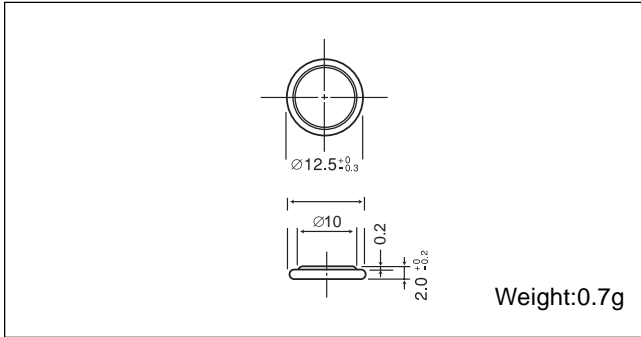
### ■ Capacity vs. load resistance



# Poly-carbonmonofluoride Lithium Coin Batteries: Individual Specifications

## BR1220

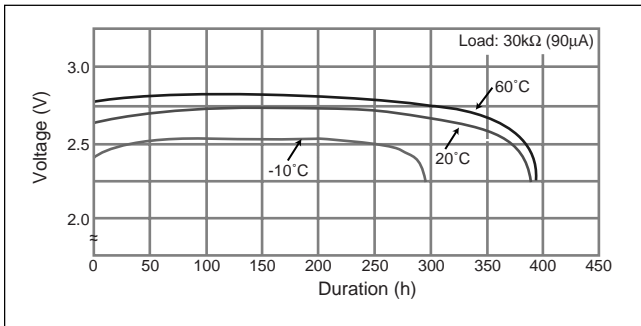
### ■ Dimensions(mm)



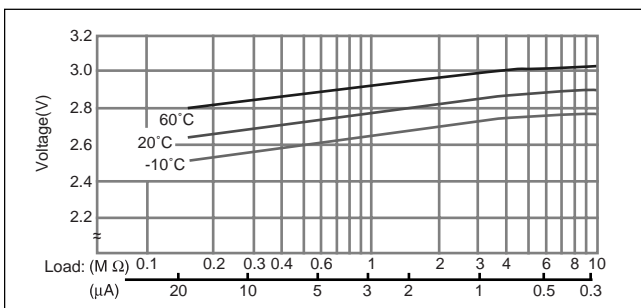
### ■ Specification

|                               |           |
|-------------------------------|-----------|
| Nominal voltage (V)           | 3         |
| Nominal capacity (mAh)        | 35        |
| Continuous standard load (mA) | 0.03      |
| Operating temperature (C)     | -30 ~ +80 |

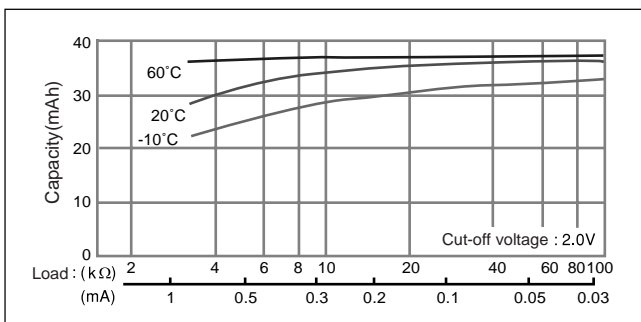
### ■ Temperature Characteristics



### ■ Operating voltage vs. load resistance (voltage at 50% discharge depth)

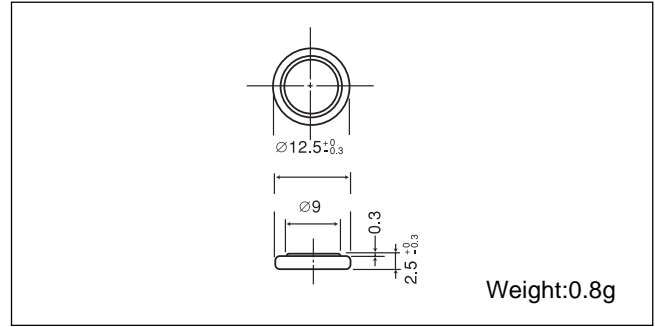


### ■ Capacity vs. load resistance



## BR1225

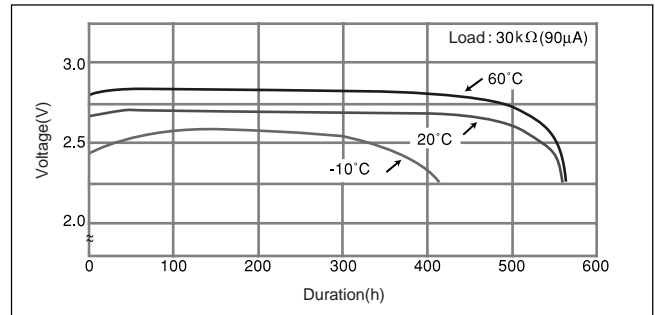
### ■ Dimensions(mm)



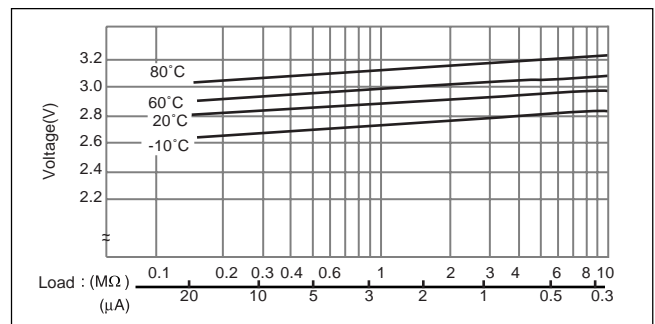
### ■ Specification

|                               |           |
|-------------------------------|-----------|
| Nominal voltage (V)           | 3         |
| Nominal capacity (mAh)        | 48        |
| Continuous standard load (mA) | 0.03      |
| Operating temperature (C)     | -30 ~ +80 |

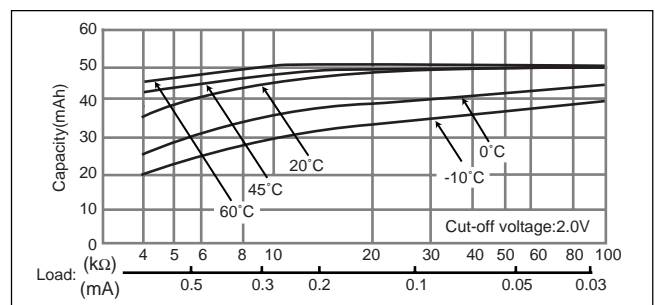
### ■ Temperature Characteristics



### ■ Operating voltage vs. load resistance (voltage at 50% discharge depth)



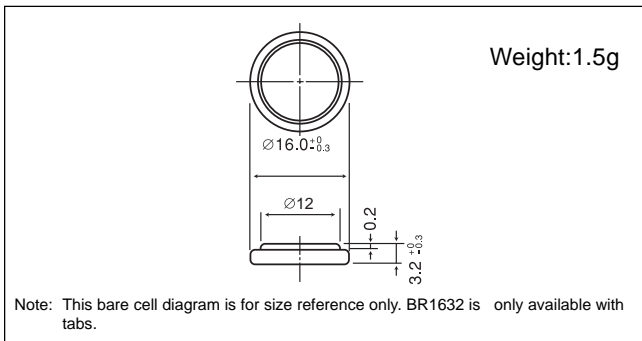
### ■ Capacity vs. load resistance



# Poly-carbonmonofluoride Lithium Coin Batteries: Individual Specifications

## BR1632

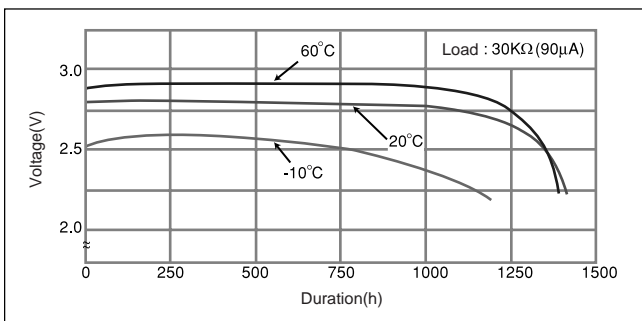
### ■ Dimensions(mm)



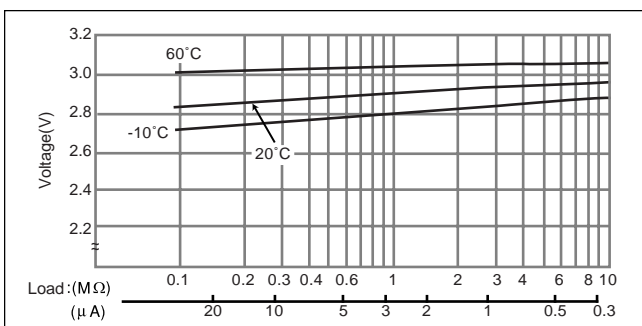
### ■ Specification

|                               |           |
|-------------------------------|-----------|
| Nominal voltage (V)           | 3         |
| Nominal capacity (mAh)        | 120       |
| Continuous standard load (mA) | 0.03      |
| Operating temperature (C)     | -30 ~ +80 |

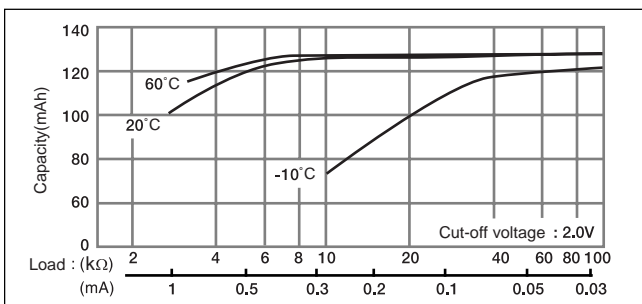
### ■ Temperature Characteristics



### ■ Operating voltage vs. load resistance (voltage at 50% discharge depth)

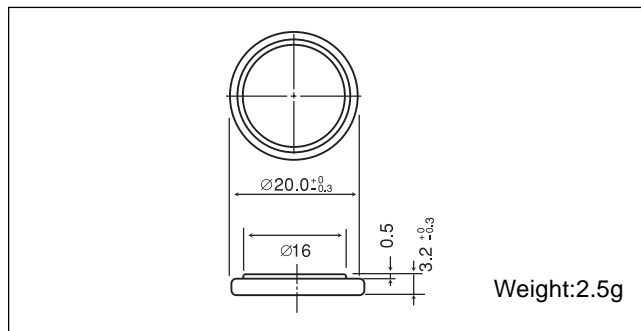


### ■ Capacity vs. load resistance



## BR2032

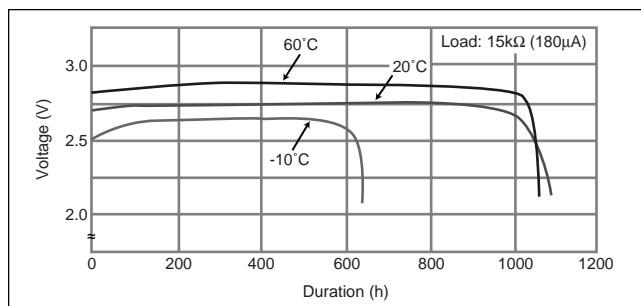
### ■ Dimensions(mm)



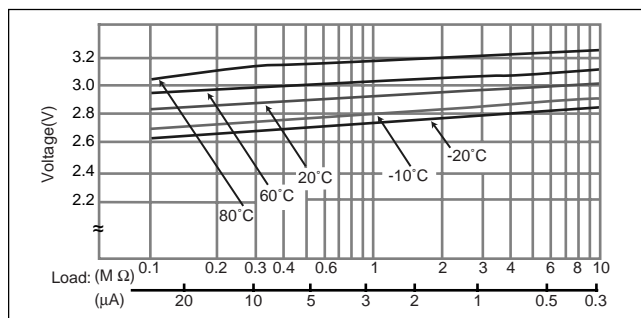
### ■ Specification

|                               |           |
|-------------------------------|-----------|
| Nominal voltage (V)           | 3         |
| Nominal capacity (mAh)        | 190       |
| Continuous standard load (mA) | 0.03      |
| Operating temperature (C)     | -30 ~ +80 |

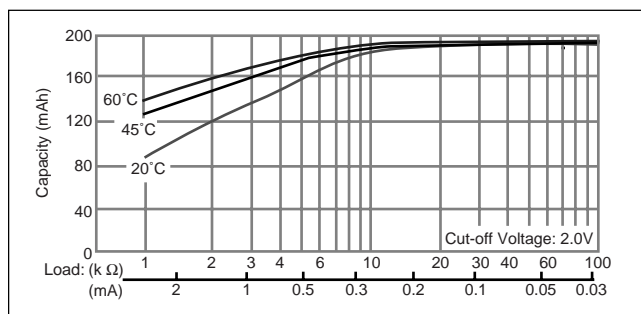
### ■ Temperature Characteristics



### ■ Operating voltage vs. load resistance (voltage at 50% discharge depth)



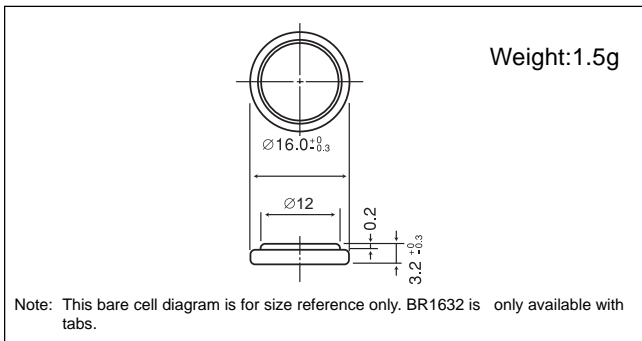
### ■ Capacity vs. load resistance



# Poly-carbonmonofluoride Lithium Coin Batteries: Individual Specifications

## BR1632

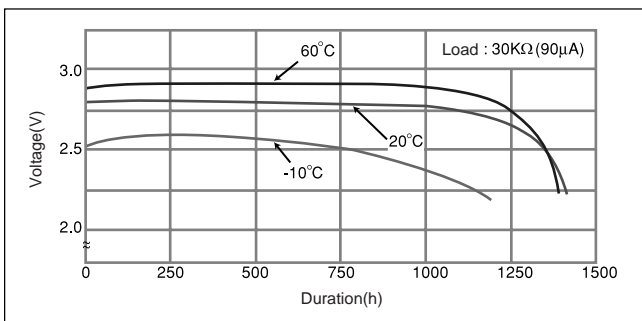
### ■ Dimensions(mm)



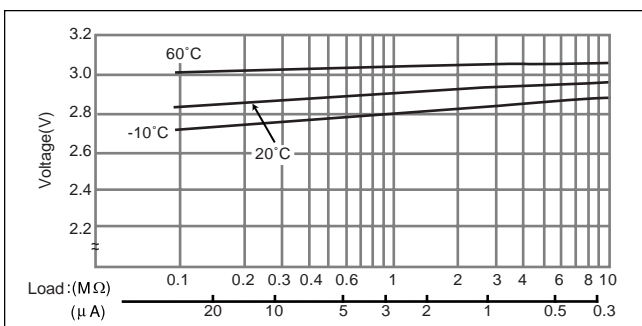
### ■ Specification

|                               |           |
|-------------------------------|-----------|
| Nominal voltage (V)           | 3         |
| Nominal capacity (mAh)        | 120       |
| Continuous standard load (mA) | 0.03      |
| Operating temperature (C)     | -30 ~ +80 |

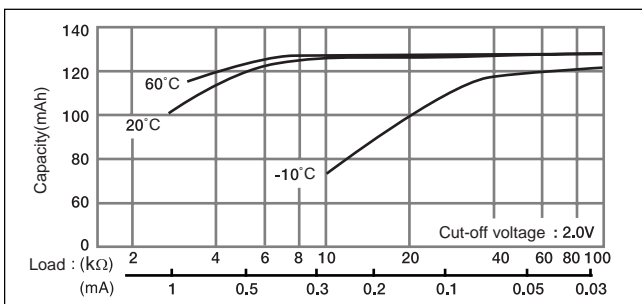
### ■ Temperature Characteristics



### ■ Operating voltage vs. load resistance (voltage at 50% discharge depth)

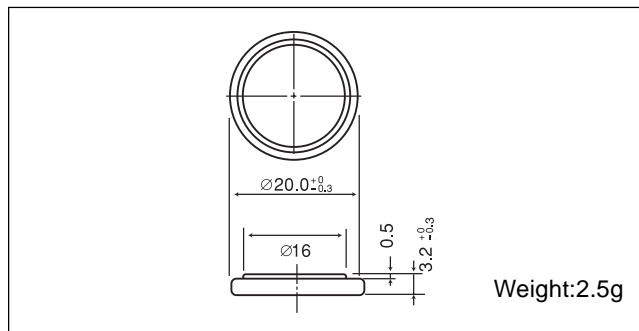


### ■ Capacity vs. load resistance



## BR2032

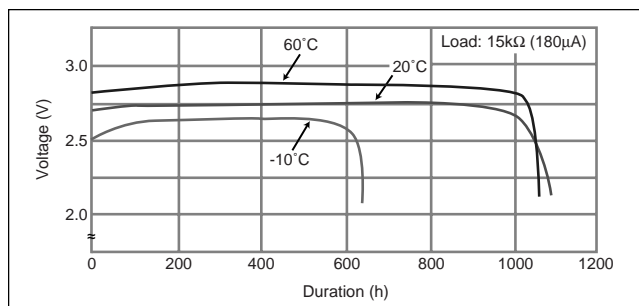
### ■ Dimensions(mm)



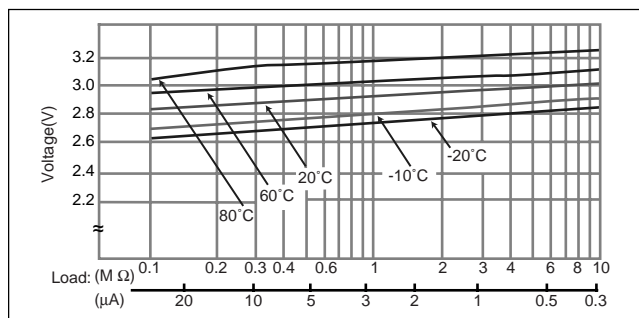
### ■ Specification

|                               |           |
|-------------------------------|-----------|
| Nominal voltage (V)           | 3         |
| Nominal capacity (mAh)        | 190       |
| Continuous standard load (mA) | 0.03      |
| Operating temperature (C)     | -30 ~ +80 |

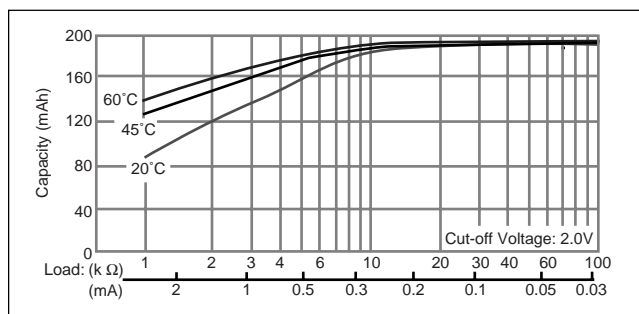
### ■ Temperature Characteristics



### ■ Operating voltage vs. load resistance (voltage at 50% discharge depth)



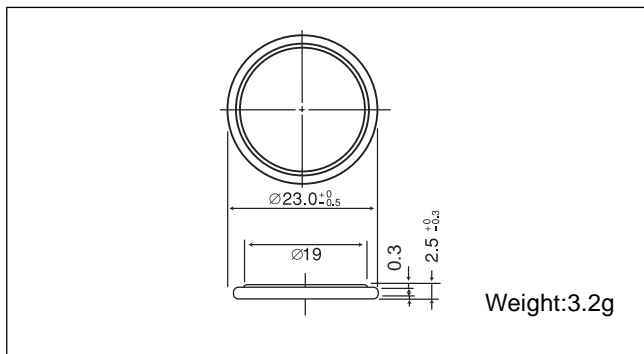
### ■ Capacity vs. load resistance



# Poly-carbonmonofluoride Lithium Coin Batteries: Individual Specifications

## BR2325

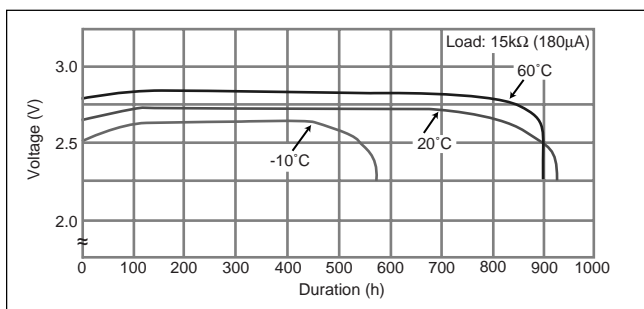
### ■ Dimensions(mm)



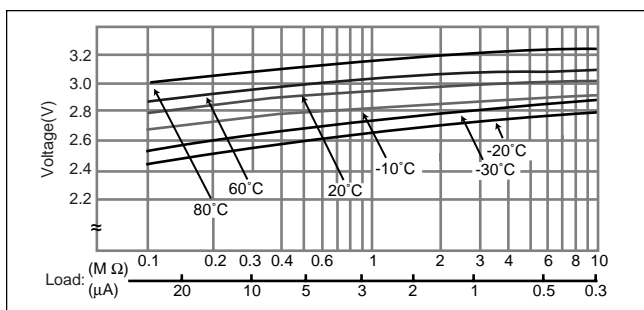
### ■ Specification

|                               |           |
|-------------------------------|-----------|
| Nominal voltage (V)           | 3         |
| Nominal capacity (mAh)        | 165       |
| Continuous standard load (mA) | 0.03      |
| Operating temperature (C)     | -30 ~ +80 |

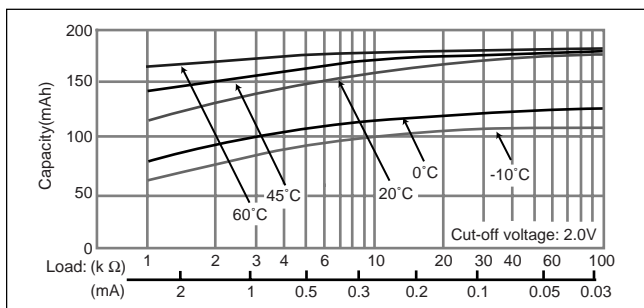
### ■ Temperature Characteristics



### ■ Operating voltage vs. load resistance (voltage at 50% discharge depth)

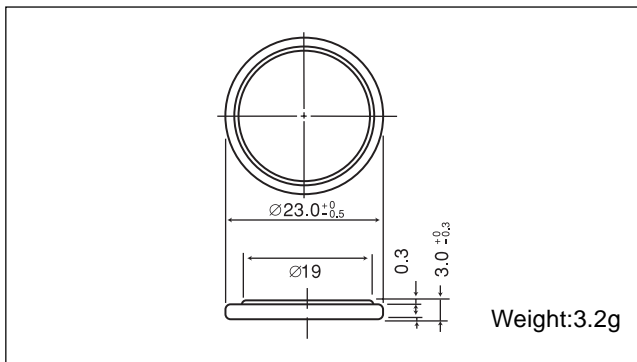


### ■ Capacity vs. load resistance



## BR2330

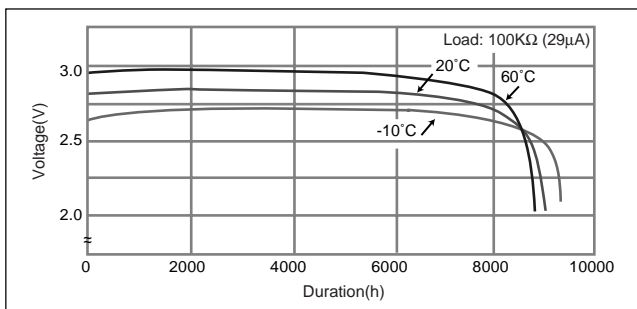
### ■ Dimensions(mm)



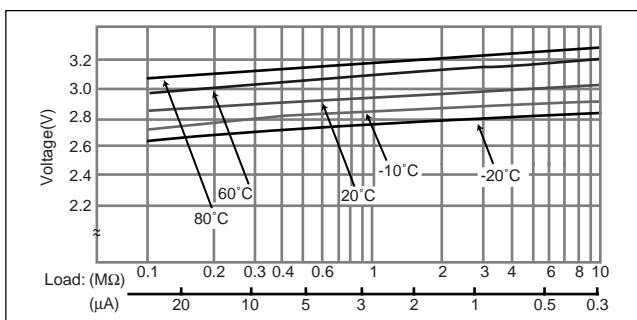
### ■ Specification

|                               |           |
|-------------------------------|-----------|
| Nominal voltage (V)           | 3         |
| Nominal capacity (mAh)        | 255       |
| Continuous standard load (mA) | 0.03      |
| Operating temperature (C)     | -30 ~ +80 |

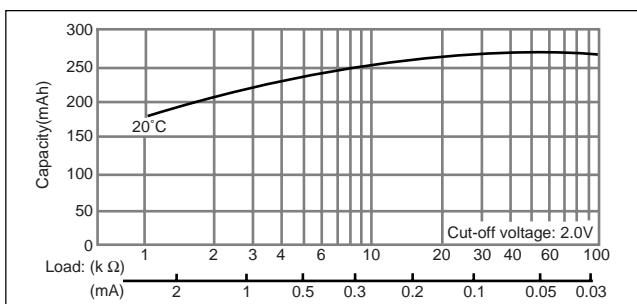
### ■ Temperature Characteristics



### ■ Operating voltage vs. load resistance (voltage at 50% discharge depth)



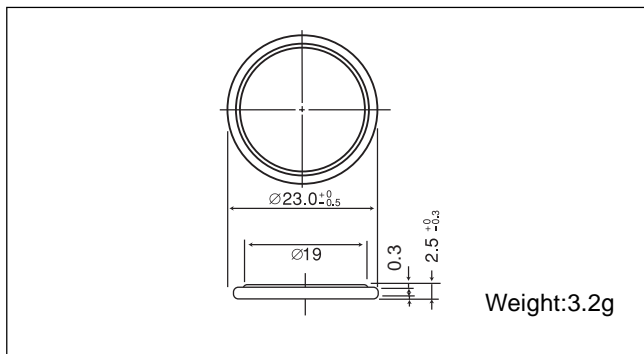
### ■ Capacity vs. load resistance



# Poly-carbonmonofluoride Lithium Coin Batteries: Individual Specifications

## BR2325

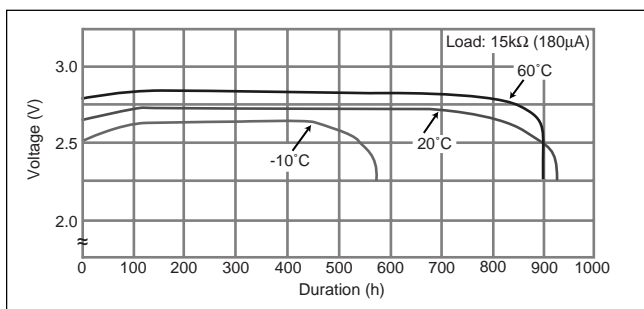
### ■ Dimensions(mm)



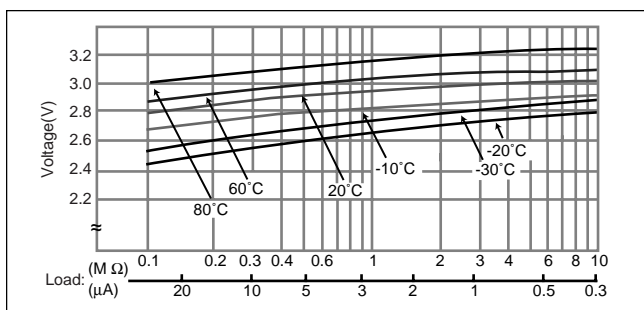
### ■ Specification

|                               |           |
|-------------------------------|-----------|
| Nominal voltage (V)           | 3         |
| Nominal capacity (mAh)        | 165       |
| Continuous standard load (mA) | 0.03      |
| Operating temperature (C)     | -30 ~ +80 |

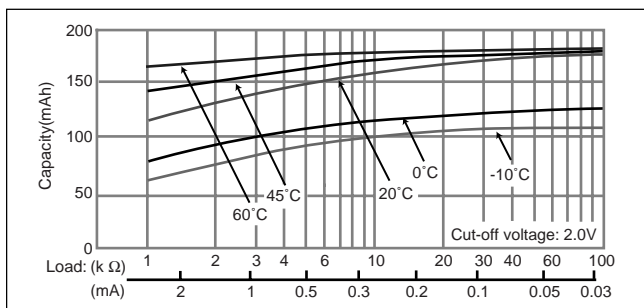
### ■ Temperature Characteristics



### ■ Operating voltage vs. load resistance (voltage at 50% discharge depth)

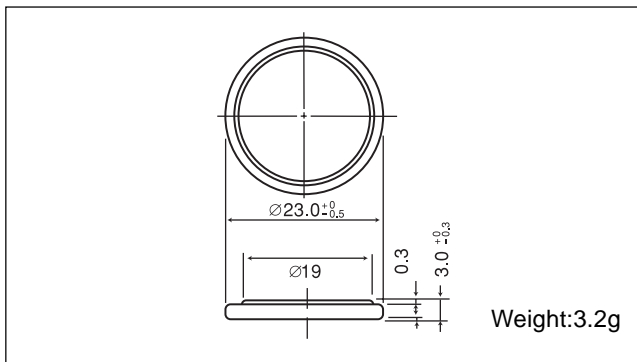


### ■ Capacity vs. load resistance



## BR2330

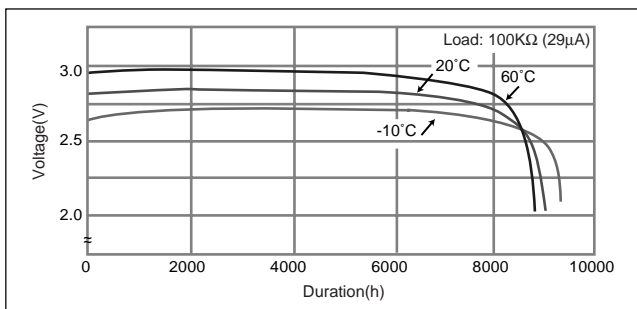
### ■ Dimensions(mm)



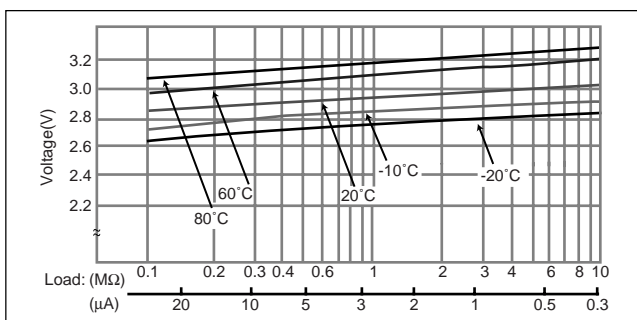
### ■ Specification

|                               |           |
|-------------------------------|-----------|
| Nominal voltage (V)           | 3         |
| Nominal capacity (mAh)        | 255       |
| Continuous standard load (mA) | 0.03      |
| Operating temperature (C)     | -30 ~ +80 |

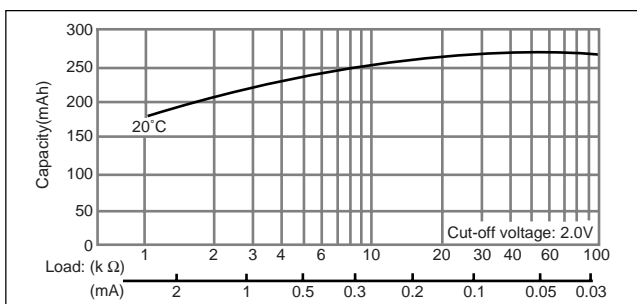
### ■ Temperature Characteristics



### ■ Operating voltage vs. load resistance (voltage at 50% discharge depth)



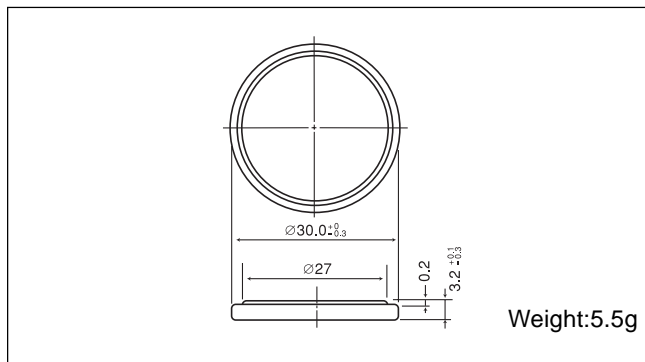
### ■ Capacity vs. load resistance



# Poly-carbonmonofluoride Lithium Coin Batteries: Individual Specifications

## BR3032

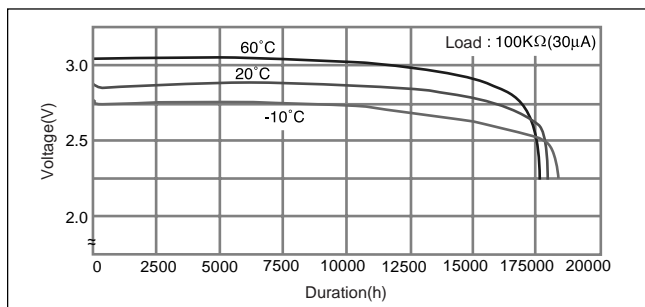
### ■ Dimensions(mm)



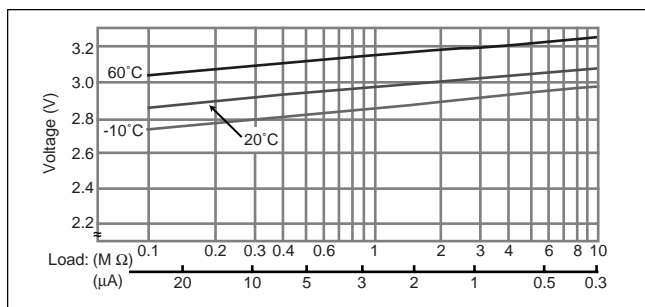
### ■ Specification

|                               |           |
|-------------------------------|-----------|
| Nominal voltage (V)           | 3         |
| Nominal capacity (mAh)        | 500       |
| Continuous standard load (mA) | 0.03      |
| Operating temperature (C)     | -30 ~ +80 |

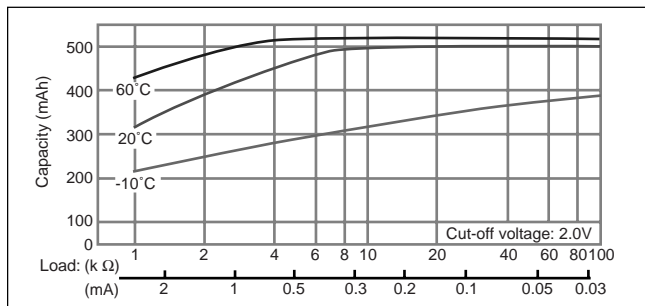
### ■ Temperature Characteristics



### ■ Operating voltage vs. load resistance(voltage at 50% discharge depth)



### ■ Capacity vs. load resistance



# Mouser Electronics

Authorized Distributor

Click to View Pricing, Inventory, Delivery & Lifecycle Information:

## Panasonic:

[BR1225](#) [BR1225-1HC](#) [BR1225-1VC](#) [BR1225A/HA](#) [BR1225A/HB](#) [BR1632](#) [BR1632-HFN](#) [BR1632A/FAN](#)  
[BR1632A/HAN](#) [BR1632A/VAN](#) [BR2032](#) [BR2325](#) [BR2325-1GU](#) [BR2325-1HC](#) [BR2325-1HG](#) [BR2325-1VC](#) [BR2325-1VG](#) [BR2330](#) [BR2330-1GV](#) [BR2330/1HE](#) [BR2330-1HG](#) [BR2330-1VC](#) [BR2330A/FAN](#) [BR2330A/HDN](#) [BR3032](#) [BR-1225/HCN](#) [BR-1225/VCN](#) [BR-2032/F2N](#) [BR-2330/HEN](#) [BR-1220/BN](#) [BR-1632/1HF](#) [BR-1632/HFN](#) [BR-2325/HGN](#) [BR-2325/VGN](#) [BR-1225/HAN](#) [BR2325-1HB](#) [BR-2325/HCN](#) [BR-2325/2HAN](#) [BR-2325/VCN](#) [BR-2330/GVFN](#) [BR-2330/HFN](#) [BR-2330/VCN](#) [BR-3032/F2N](#) [BR-2330/F3N](#) [BR-3032/VCN](#) [BR-2330/GUFN](#) [BR-3032/GUFN](#) [BR-2325/GMN](#) [BR-2325/HEN](#) [BR-1632/V1AN](#) [BR-2032/F4N](#) [BR-2032/GVFN](#) [BR-2032/HFN](#) [BR-2032/VC1N](#) [BR-1225/VFN](#) [BR1220](#) [BR-1220/FCN](#) [BR-1220/HFN](#) [BR-1220/VCN](#) [BR-1225/H9AN](#) [BR-1225/HBN](#) [BR-1225/H1AN](#) [BR-2325/HBN](#)