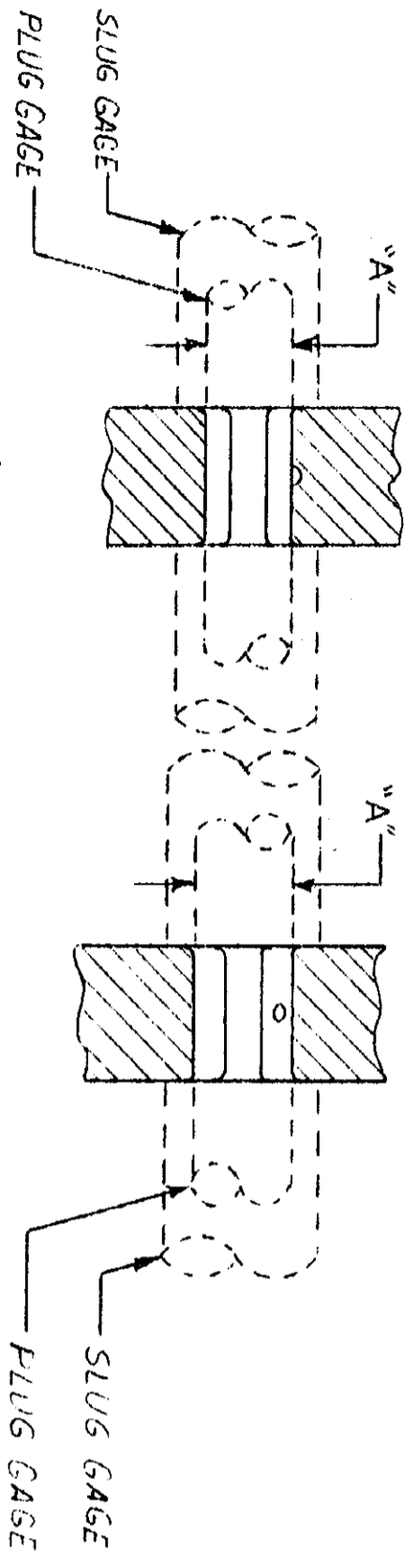
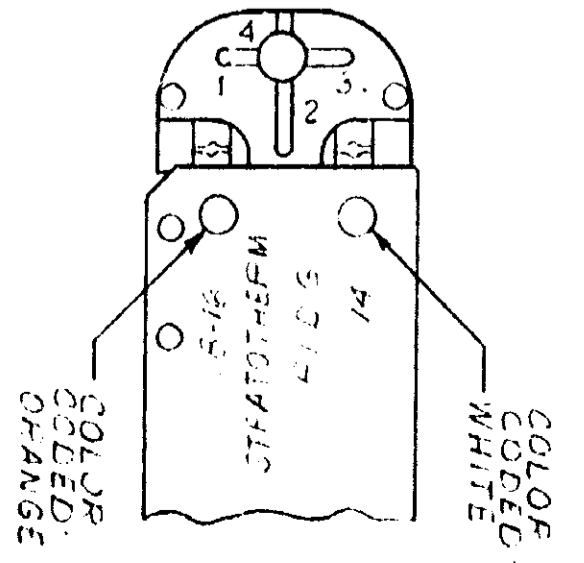
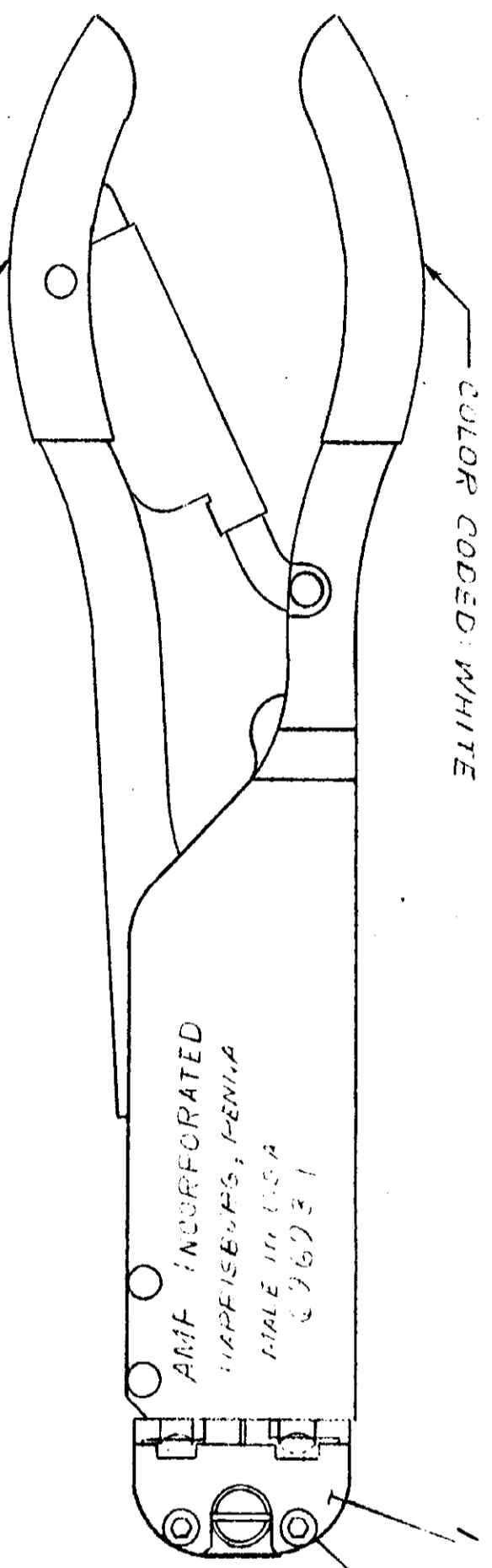
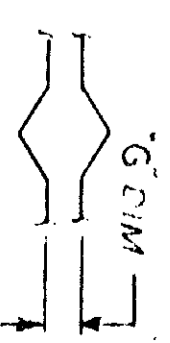
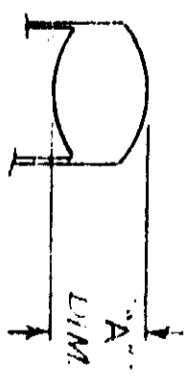


SUPERSEDED BY 1.5.1610



WIRE SIZE	"A" DIM BARREL CRIMP	INSUL CRIMP	"G" DIM
GAGE	GO	NO GO	NO GO
18-16	.131	.134	.030
14	.151	.154	.040
			.120



18-16 BARREL INSERTS
14 BARREL INSERTS

ITEM NO.	QTY	DESCRIPTION	REMARKS
1	1	59755-2 SUPPORT-LOCATOR	
2	2	1-21002-3 SCREW	

NOTES
1. WHEN PLUG OR SLUG GAGING OF BARREL CRIMP IT IS IMPORTANT TO NOTE THAT DIM "A" IS THE FIGURE REQD.
2. SLUG GAGE DIMENSIONS APPLY WHEN "001" IS BOTTOMED BUT NOT UNDER PRESSURE.

REV	DATE	BY	CHK	REVISION RECORD
01	5/15/61	ELF	ELF	1-2693-1

REV	DATE	BY	CHK	REVISION RECORD
01	5/15/61	ELF	ELF	1-2693-1

REV	DATE	BY	CHK	REVISION RECORD
01	5/15/61	ELF	ELF	1-2693-1

REV	DATE	BY	CHK	REVISION RECORD
01	5/15/61	ELF	ELF	1-2693-1

REV	DATE	BY	CHK	REVISION RECORD
01	5/15/61	ELF	ELF	1-2693-1

PRINT DATE
DIMENSIONS IN INCHES. DO NOT SCALE PRINT

AMP 855 REV 208 8 7 6 5 4 3 2 1

AMP INCORPORATED
WARRINGTON, PENNA.
CLASS
TYPE P.I.D.S. STRATOTHERM
LOC M
REV NO 69693-1
REV 01

WIRE RANGE - INSULATION
18-16 & 14
TOLERANCE EXCEPT AS NOTED ± .015
SCALE 1-1
NAME "T" HEAD ASSEMBLY

DR O. J. HAYK & 3-2-67
GRC J. J. HAYK & 3-2-67
DE J. J. HAYK & 3-10-67

REQUIRED PER ASSEMBLY
DESCRIPTION
NUMBER
69693-1

1-2693-1
DR CKM DATE

1-2693-1
DR CKM DATE

AMP 855 REV 208 8

Mouser Electronics

Authorized Distributor

Click to View Pricing, Inventory, Delivery & Lifecycle Information:

[TE Connectivity:](#)

[69693-1](#)