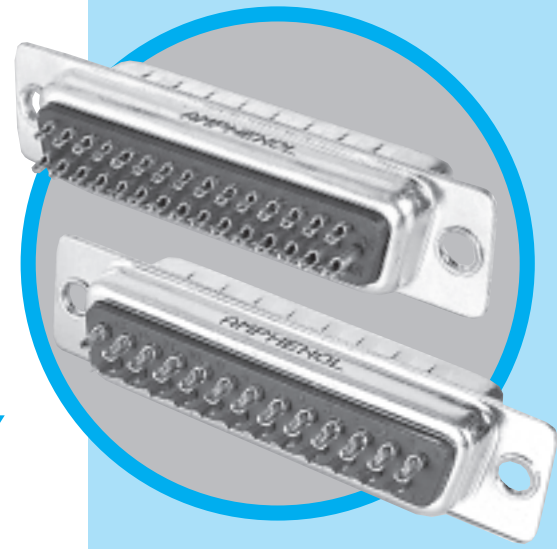


SD

D'Sub connectors - Stamped and Formed Contacts

SOLDER-CUP TERMINATION STANDARD and HIGH DENSITY



CHARACTERISTICS

Specifications

- Connectors according to: MIL C24308 - NFC 93425-HE5

| Materials and Platings | |
|------------------------|---|
| Shells | Steel, bright tin over nickel plating |
| Insulator | Glass-filled thermoplastic, UL 94V-0 |
| Pin contacts | Brass, selected gold in mating area; 2.54µm (100µ") min. tin on termination area over 1.27µm (50µ") min. nickel |
| Socket contact | Phosphor bronze, selected gold in mating area; 2.54µm (100µ") min. tin-on termination area over 1.27µm (50µ") min. nickel |
| Rear insert | Brass, 2.54µm (100µ") min. nickel plated |
| Screwlock | Brass, 2.54µm (100µ") min. nickel plated |

| Electrical Data | |
|------------------------------|--|
| Current rating | Standard Density: 5A High Density: 3A |
| Voltage rating | 250V AC/rms 50Hz |
| Withstanding voltage | 1000V AC/rms 50Hz for one minute |
| Insulation resistance | 1000MΩ at 500V DC |
| Contact resistance | 20mΩ max |

| Climatic Data | |
|------------------------------|-----------------|
| Operating temperature | -55°C to +125°C |
| Salt spray | 24 hours |

| Mechanical Data | | | | | | |
|--|----|--|---------------|--------------|---------------|--------------|
| Single contact insertion force | | 0.54kg (1.19lb) max | | | | |
| Single contact withdrawal force | | SD : 0.06kg (0.13lb) min HD : 0.02kg (0.044lb) min | | | | |
| Mating and unmating force Unit: kg (lb) | | | | | | |
| No. of Cts | SD | | | HD | | |
| | SD | HD | Mate (max) | Unmate (min) | Mate (max) | Unmate (min) |
| 9 | 15 | | 3.05 (6.74) | 0.36 (0.79) | 3.81 (8.42) | 0.52 (1.14) |
| 15 | 26 | | 5.09 (11.24) | 0.46 (1.01) | 5.95 (13.16) | 1.05 (2.32) |
| 25 | 44 | | 8.44 (18.66) | 0.81 (1.8) | 9.26 (20.46) | 1.37 (3.02) |
| 37 | 62 | | 12.51 (27.65) | 1.1 (2.47) | 13.48 (29.78) | 1.76 (3.88) |
| 50 | 78 | | 14.65 (32.38) | 1.6 (3.56) | 15.82 (34.96) | 2.02 (4.46) |
| Standard plating thickness | | <ul style="list-style-type: none"> gold flash 0.4µm (15µ") gold 0.76 µm (30µ") gold | | | | |

DESCRIPTION

The Amphenol "SD" series features precision formed contacts, and insulator with closed entry contacts cavities.

This series gives you Amphenol's high standards of quality and reliability to meet all of your commercial requirements.

*Economical
solder cup
connectors*

APPLICATIONS

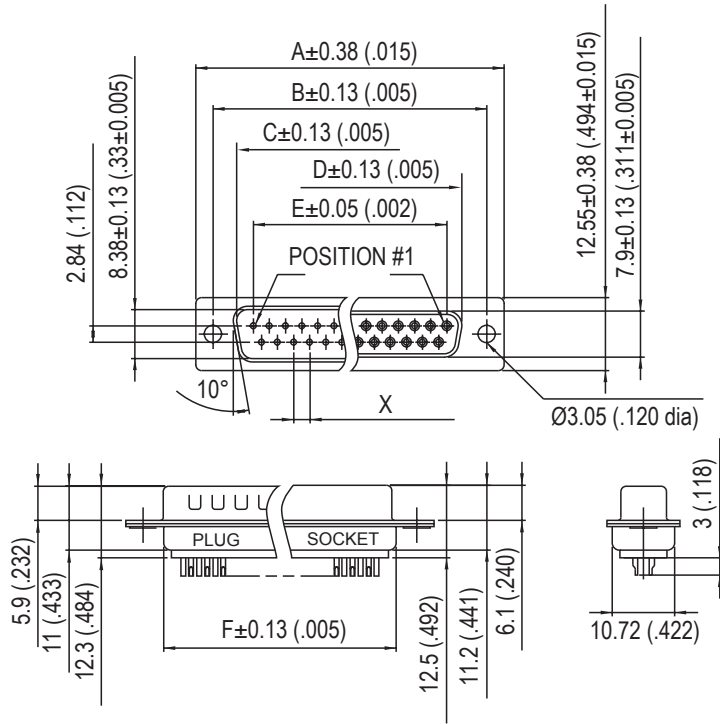
- Industrial
- Telecom
- Any industry standard I/O connections

SD / E5

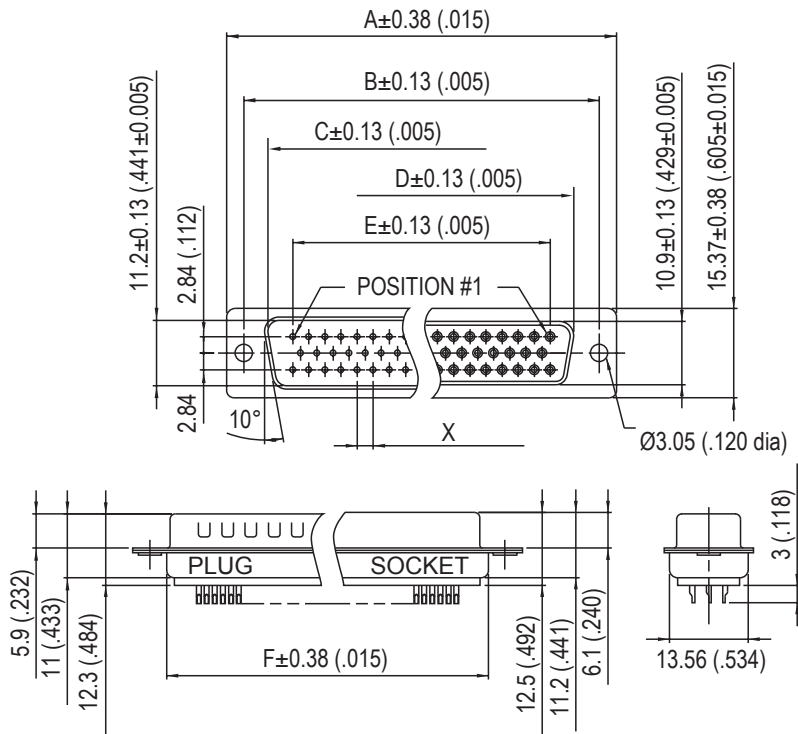


Amphenol

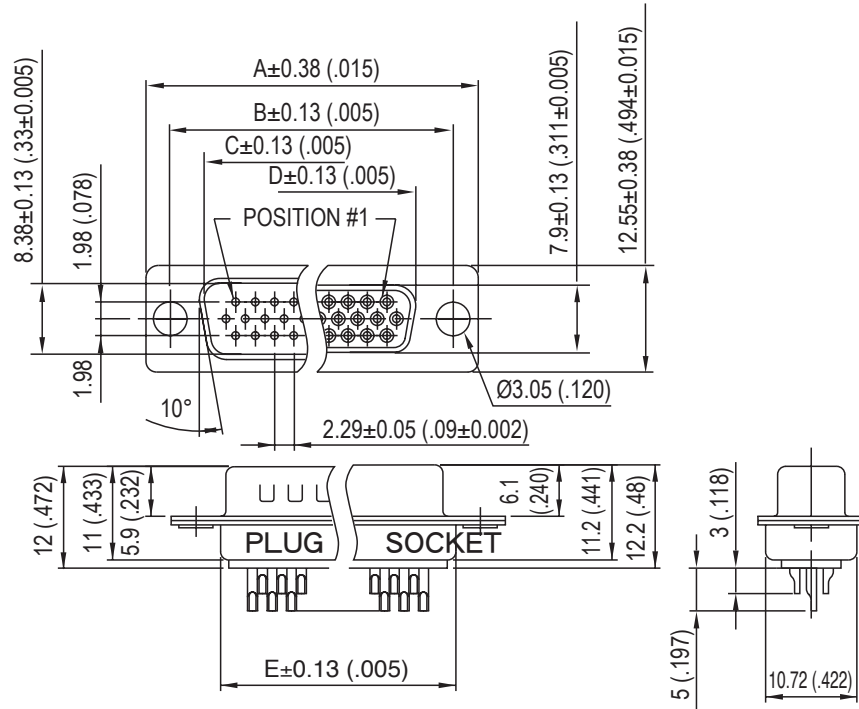
Standard Density



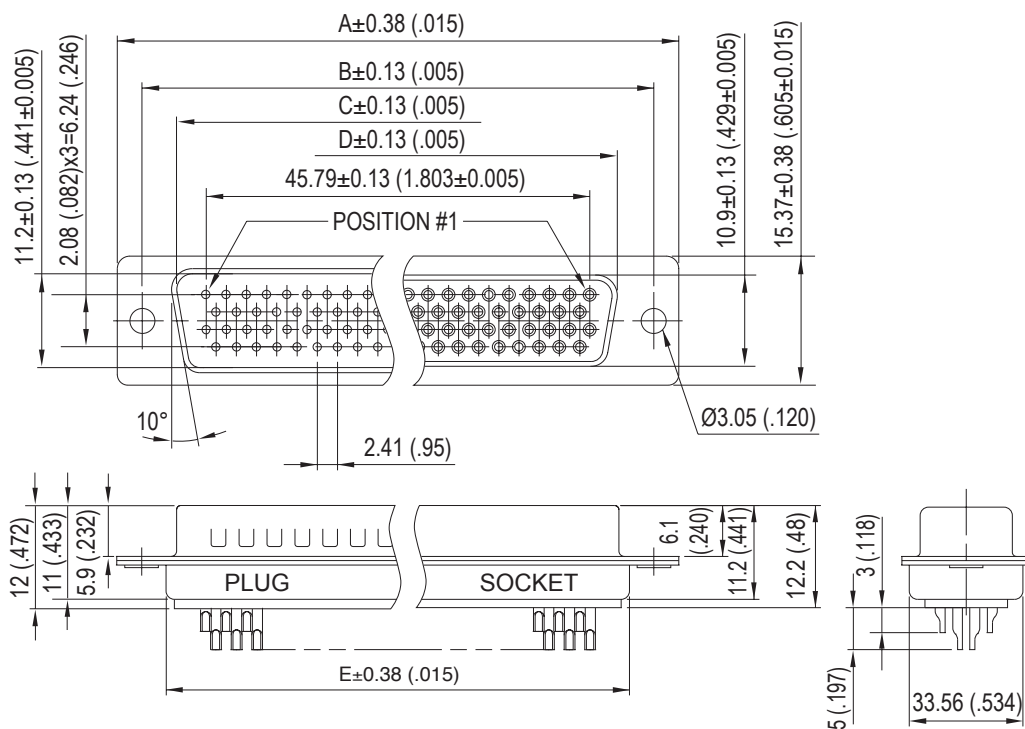
| Nb OF CONTACTS | DIMENSIONS mm (inch) | | | | | | |
|----------------|----------------------|--------------|--------------|--------------|--------------|--------------|------|
| | A | B | C | D | E | F | X |
| 9 | 30.84 (1.21) | 24.99 (.98) | 16.92 (.67) | 16.24 (.64) | 11.09 (.44) | 19.28 (.76) | 2.74 |
| 15 | 39.24 (1.54) | 33.32 (1.31) | 24.7 (.972) | 24.56 (.97) | 19.39 (.76) | 27.51 (1.08) | 2.74 |
| 25 | 53.04 (2.09) | 47.04 (1.85) | 38.96 (1.53) | 38.38 (1.51) | 33.24 (1.31) | 41.30 (1.63) | 2.77 |
| 37 | 69.32 (2.73) | 63.50 (2.50) | 55.42 (2.18) | 54.76 (2.16) | 49.86 (1.96) | 57.71 (2.27) | 2.77 |
| 50 | 67 (2.64) | 61.11 (2.41) | 52.86 (2.08) | 52.34 (2.06) | 44.32 (1.75) | 55.3 (2.18) | 2.77 |



High Density

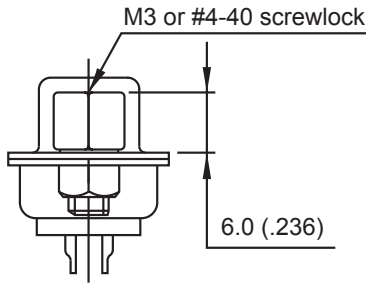


| Nb OF CONTACTS | DIMENSIONS mm (inch) | | | | |
|----------------|----------------------|--------------|--------------|--------------|--------------|
| | A | B | C | D | E |
| 15 | 30.84 (1.21) | 24.99 (.98) | 16.92 (.67) | 16.24 (.64) | 19.28 (.76) |
| 26 | 39.24 (1.54) | 33.32 (1.31) | 24.7 (.972) | 24.56 (.97) | 27.51 (1.08) |
| 44 | 53.04 (2.09) | 47.04 (1.85) | 38.96 (1.53) | 38.38 (1.51) | 41.30 (1.63) |
| 62 | 69.32 (2.73) | 63.50 (2.50) | 55.42 (2.18) | 54.76 (2.16) | 57.71 (2.27) |
| 78 | 67 (2.64) | 61.11 (2.41) | 52.86 (2.08) | 52.34 (2.06) | 55.3 (2.18) |

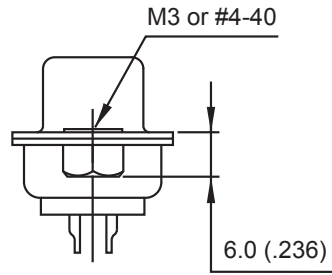


78 CONTACTS

Panel mounting option

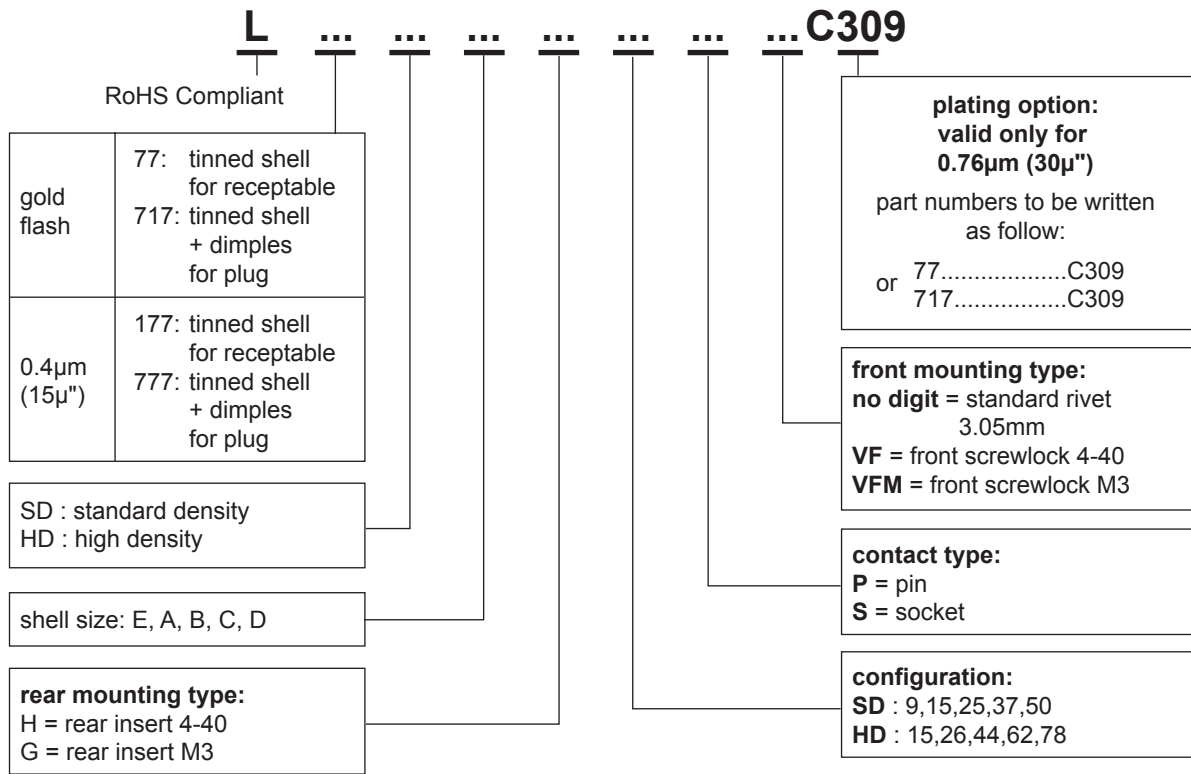


Front Female Screwlock
VF / VFM



Threaded Rear Insert
H / G

How to order



For special request, please consult factory

Do not hesitate to contact us for further information

Amphenol

Amphenol IT & Communication Products

Block A3/A4, The 4th Industrial District of
Industrial Headquarters, Dong Keng Road
Gong Ming Town, Shen Zhen China
Fax: +86(0)755 2754 9955

Technical Support

Tel: +86(0)755 2717 7945
Info-dsub@amphenol.com.cn
http://www.dsubconnector.com