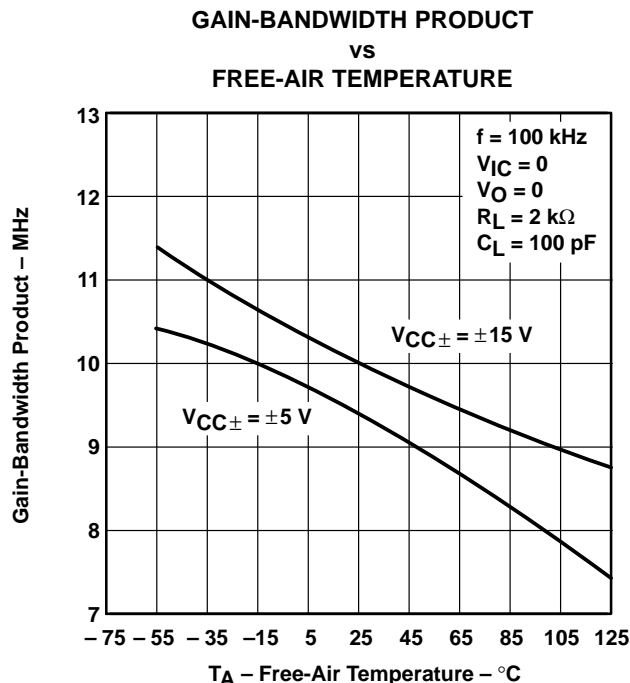
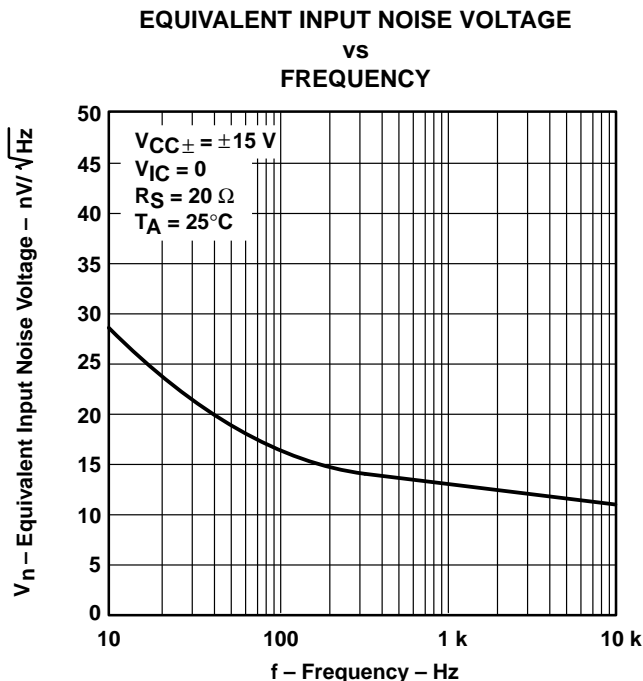


# TLE2072, TLE2072A, TLE2072Y EXCALIBUR LOW-NOISE HIGH-SPEED JFET-INPUT DUAL OPERATIONAL AMPLIFIERS

SLOS124A – JUNE 1993 – REVISED AUGUST 1994

- 40-V/ $\mu$ s Slew Rate Typ
- Low Noise  
17 nV/ $\sqrt{\text{Hz}}$  Max at  $f = 10$  kHz  
11.6 nV/ $\sqrt{\text{Hz}}$  Typ at  $f = 10$  kHz
- High Gain-Bandwidth Product . . . 10 MHz
- $\pm 30$ -mA Minimum Short-Circuit Output Current
- Wide Supply Range . . .  $\pm 2.25$  V to  $\pm 19$  V
- Input Range Includes the Positive Supply
- Macromodel Included
- Fast Settling Time Using 10-V Step  
400 ns to 10 mV Typ  
1.5  $\mu$ s to 1 mV Typ



## description

The TLE2072 and TLE2072A are low-noise, high-performance, internally compensated JFET-input dual operational amplifiers built using Texas Instruments complementary bipolar Excalibur process. These devices combine low noise with outstanding output drive capability, high slew rate, and wide bandwidth.

### AVAILABLE OPTIONS

$T_A$	$V_{IOmax}$ AT $25^\circ\text{C}$	PACKAGED DEVICES				CHIP FORM (Y)
		SMALL OUTLINE (D)	CHIP CARRIER (FK)	CERAMIC DIP (JG)	PLASTIC DIP (P)	
$0^\circ\text{C}$ to $70^\circ\text{C}$	3.5 mV 6 mV	TLE2072ACD TLE2072CD	—	—	TLE2072ACP TLE2072CP	— TLE2072Y
$-40^\circ\text{C}$ to $85^\circ\text{C}$	3.5 mV 6 mV	TLE2072AID TLE2072ID	—	—	TLE2072AIP TLE2072IP	—
$-55^\circ\text{C}$ to $125^\circ\text{C}$	3.5 mV 6 mV	—	TLE2072AMFK TLE2072MFK	TLE2072AMJG TLE2072MJG	—	—

The D packages are available taped and reeled. Add R suffix to device type (e.g., TLE2072ACDR). Chip-form versions are tested at  $T_A = 25^\circ\text{C}$ . For chip-form orders, contact your local TI sales office.

PRODUCTION DATA information is current as of publication date. Products conform to specifications per the terms of Texas Instruments standard warranty. Production processing does not necessarily include testing of all parameters.



POST OFFICE BOX 655303 • DALLAS, TEXAS 75265

Copyright © 1994, Texas Instruments Incorporated  
On products compliant to MIL-STD-883, Class B, all parameters are tested unless otherwise noted. On all other products, production processing does not necessarily include testing of all parameters.

# TLE2072, TLE2072A, TLE2072Y EXCALIBUR LOW-NOISE HIGH-SPEED JFET-INPUT DUAL OPERATIONAL AMPLIFIERS

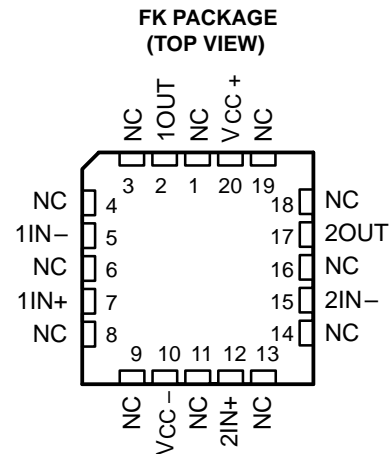
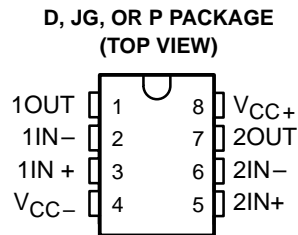
SLOS124A – JUNE 1993 – REVISED AUGUST 1994

## description (continued)

The design features a  $28\text{-V}/\mu\text{s}$  minimum slew rate, which results in a high-power bandwidth. A low audio-band noise of  $28\text{ nV}/\sqrt{\text{Hz}}$  is typical with a  $55\text{ nV}/\sqrt{\text{Hz}}$  maximum at 10 Hz. Settling time to 0.1% of a 10-V step (1-k $\Omega$ /100-pF load) is approximately 400 ns. Gain-bandwidth product is typically 10 MHz with an 8 MHz minimum. As such, the TLE2072 and TLE2072A offer significant speed and noise advantages at a low 1.5-mA typical supply current per channel.

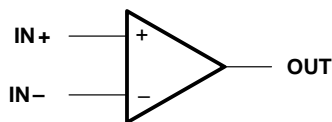
The input current characteristics traditionally associated with JFET-input amplifiers have been maintained. Input offset voltage is graded to a 6 mV and 3.5 mV maximum for the TLE2072 and TLE2072A, respectively. Typically, temperature coefficient of input offset voltage is  $2.4\text{ }\mu\text{V}/^\circ\text{C}$  and typical CMRR and  $k_{\text{SVR}}$  are 98 dB and 99 dB, respectively. Device performance is relatively independent of supply voltage over the wide  $\pm 2.25\text{-V}$  to  $\pm 19\text{-V}$  range. The input common-mode voltage range extends from the positive supply down to  $V_{\text{CC-}} + 4\text{ V}$  without significant degradation to dynamic performance. Maximum peak output voltage swing is from  $V_{\text{CC+}} - 1\text{ V}$  to  $V_{\text{CC-}} + 1\text{ V}$  under light current loading conditions. The output is capable of sourcing and sinking currents to at least 30 mA and can sustain shorts to either supply. Care must be taken to ensure that maximum power dissipation is not exceeded.

Both the TLE2072 and TLE2072A are available in a wide variety of packages, including both the industry-standard 8-pin small-outline version and chip form for high-density system applications. The C-suffix devices are characterized for operation from  $0^\circ\text{C}$  to  $70^\circ\text{C}$ , the I-suffix devices over the  $-40^\circ\text{C}$  to  $85^\circ\text{C}$  range, and the M-suffix devices over the full military temperature range of  $-55^\circ\text{C}$  to  $125^\circ\text{C}$ .



NC – No internal connection

## symbol

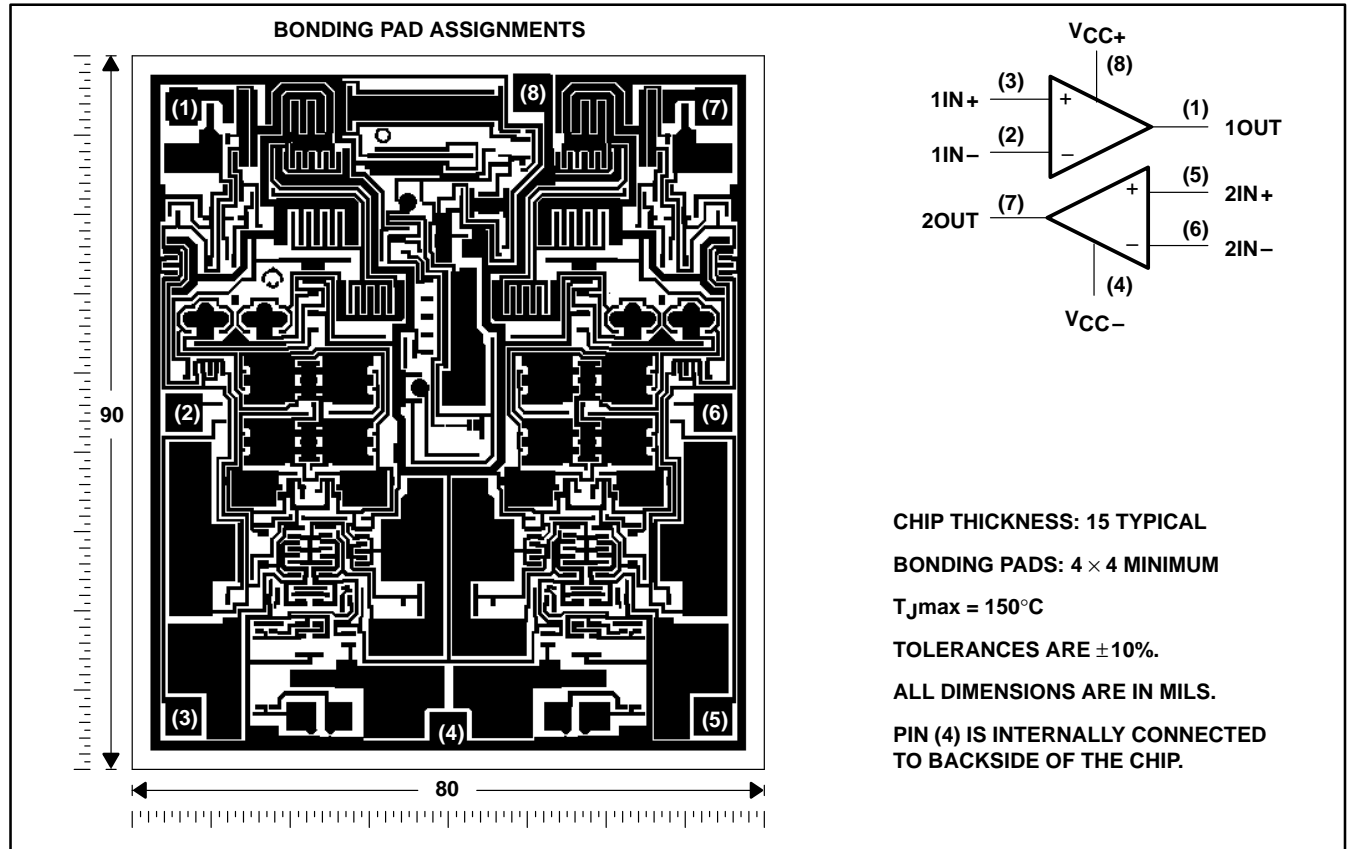


**TLE2072, TLE2072A, TLE2072Y**  
**EXCALIBUR LOW-NOISE HIGH-SPEED**  
**JFET-INPUT DUAL OPERATIONAL AMPLIFIERS**

SLOS124A – JUNE 1993 – REVISED AUGUST 1994

**TLE2072Y chip information**

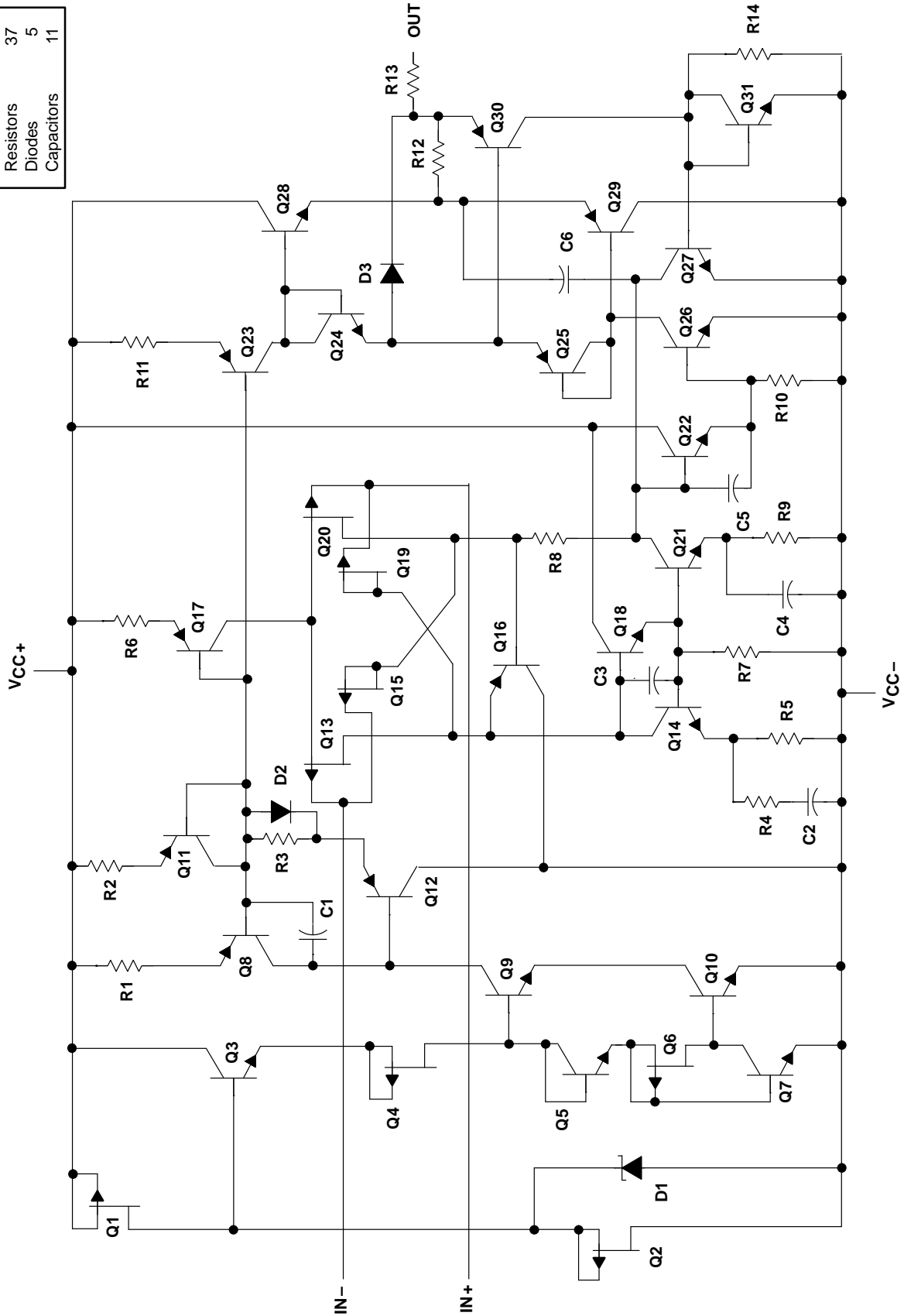
This chip, when properly assembled, displays characteristics similar to the TLE2072. Thermal compression or ultrasonic bonding may be used on the doped-aluminum bonding pads. Chips may be mounted with conductive epoxy or a gold-silicon preform.



**TLE2072, TLE2072A, TLE2072Y**  
**EXCALIBUR LOW-NOISE HIGH-SPEED**  
**JFET-INPUT DUAL OPERATIONAL AMPLIFIERS**  
 SLOS124A – JUNE 1993 – REVISED AUGUST 1994

ACTUAL DEVICE COMPONENT COUNT	
Transistors	57
Resistors	37
Diodes	5
Capacitors	11

equivalent schematic (each channel)



**TLE2072, TLE2072A, TLE2072Y**  
**EXCALIBUR LOW-NOISE HIGH-SPEED**  
**JFET-INPUT DUAL OPERATIONAL AMPLIFIERS**

SLOS124A – JUNE 1993 – REVISED AUGUST 1994

**absolute maximum ratings over operating free-air temperature range (unless otherwise noted)†**

Supply voltage, $V_{CC+}$ (see Note 1)	19 V
Supply voltage, $V_{CC-}$ (see Note 1)	–19 V
Differential input voltage range, $V_{ID}$ (see Note 2)	$V_{CC+}$ to $V_{CC-}$
Input voltage range, $V_I$ (any input)	$V_{CC+}$ to $V_{CC-}$
Input current, $I_I$ (each input)	$\pm 1$ mA
Output current, $I_O$ (each output)	$\pm 80$ mA
Total current into $V_{CC+}$	160 mA
Total current out of $V_{CC-}$	160 mA
Duration of short-circuit current at (or below) 25°C (see Note 3)	unlimited
Continuous total dissipation	See Dissipation Rating Table
Operating free-air temperature range, $T_A$ : C suffix	0°C to 70°C
I suffix	–40°C to 85°C
M suffix	–55°C to 125°C
Storage temperature range	–65°C to 150°C
Case temperature for 60 seconds: FK package	260°C
Lead temperature 1,6 mm (1/16 inch) from case for 10 seconds: D or P package	260°C
Lead temperature 1,6 mm (1/16 inch) from case for 60 seconds: JG package	300°C

† Stresses beyond those listed under “absolute maximum ratings” may cause permanent damage to the device. These are stress ratings only, and functional operation of the device at these or any other conditions beyond those indicated under “recommended operating conditions” is not implied. Exposure to absolute-maximum-rated conditions for extended periods may affect device reliability.

- NOTES: 1. All voltage values except differential voltages are with respect to the midpoint between  $V_{CC+}$  and  $V_{CC-}$ .  
2. Differential voltages are at  $IN+$  with respect to  $IN-$ .  
3. The output can be shorted to either supply. Temperatures and/or supply voltages must be limited to ensure that the maximum dissipation rate is not exceeded.

**DISSIPATION RATING TABLE**

PACKAGE	$T_A \leq 25^\circ\text{C}$	DERATING FACTOR ABOVE $T_A = 25^\circ\text{C}$	$T_A = 70^\circ\text{C}$	$T_A = 85^\circ\text{C}$	$T_A = 125^\circ\text{C}$
	POWER RATING		POWER RATING	POWER RATING	POWER RATING
D	725 mW	5.8 mW/°C	464 mW	377 mW	145 mW
FK	1375 mW	11.0 mW/°C	880 mW	715 mW	275 mW
JG	1050 mW	8.4 mW/°C	672 mW	546 mW	210 mW
P	1000 mW	8.0 mW/°C	640 mW	344 mW	200 mW

**recommended operating conditions**

	C SUFFIX		I SUFFIX		M SUFFIX		UNIT
	MIN	MAX	MIN	MAX	MIN	MAX	
Supply voltage, $V_{CC\pm}$	$\pm 2.25$	$\pm 19$	$\pm 2.25$	$\pm 19$	$\pm 2.25$	$\pm 19$	V
Common-mode input voltage, $V_{IC}$	$V_{CC\pm} = \pm 5$ V		–0.9	5	–0.8	5	V
	$V_{CC\pm} = \pm 15$ V		–10.9	15	–10.8	15	
Operating free-air temperature, $T_A$	0	70	–40	85	–55	125	°C



**TLE2072, TLE2072A, TLE2072Y**  
**EXCALIBUR LOW-NOISE HIGH-SPEED**  
**JFET-INPUT DUAL OPERATIONAL AMPLIFIERS**

SLOS124A – JUNE 1993 – REVISED AUGUST 1994

**electrical characteristics at specified free-air temperature,  $V_{CC\pm} = \pm 5$  V (unless otherwise noted)**

PARAMETER	TEST CONDITIONS	$T_A$ †	TLE2072C			TLE2072AC			UNIT	
			MIN	TYP	MAX	MIN	TYP	MAX		
$V_{IO}$ Input offset voltage	$V_{IC} = 0$ , $R_S = 50 \Omega$	$V_O = 0$ , 25°C	0.9	6		0.65	3.5		mV	
		Full range			7.8		5.3			
$\alpha_{VIO}$ Temperature coefficient of input offset voltage		Full range	2.3	25		2.3	25		$\mu\text{V}/^\circ\text{C}$	
$I_{IO}$ Input offset current	$V_{IC} = 0$ , $V_O = 0$ , See Figure 4	25°C	5	100		5	100		pA	
		Full range			1.4		1.4		nA	
$I_{IB}$ Input bias current		25°C	15	175		15	175		pA	
		Full range			5		5		nA	
$V_{ICR}$ Common-mode input voltage range	$R_S = 50 \Omega$	25°C	5 to -1	5 to -1.9		5 to -1	5 to -1.9		V	
		Full range	5 to -0.9			5 to -0.9				
$V_{OM+}$ Maximum positive peak output voltage swing	$I_O = -200 \mu\text{A}$	25°C	3.8	4.1		3.8	4.1		V	
		Full range			3.7		3.7			
	$I_O = -2 \text{ mA}$	25°C	3.5	3.9		3.5	3.9			
		Full range			3.4		3.4			
	$I_O = -20 \text{ mA}$	25°C	1.5	2.3		1.5	2.3			
		Full range			1.5		1.5			
$V_{OM-}$ Maximum negative peak output voltage swing	$I_O = 200 \mu\text{A}$	25°C	-3.8	-4.2		-3.8	-4.2		V	
		Full range			-3.7		-3.7			
	$I_O = 2 \text{ mA}$	25°C	-3.5	-4.1		-3.5	-4.1			
		Full range			-3.4		-3.4			
	$I_O = 20 \text{ mA}$	25°C	-1.5	-2.4		-1.5	-2.4			
		Full range			-1.5		-1.5			
$A_{VD}$ Large-signal differential voltage amplification	$V_O = \pm 2.3 \text{ V}$	$R_L = 600 \Omega$	25°C	80	91		80	91	dB	
			Full range			79		79		
		$R_L = 2 \text{ k}\Omega$	25°C	90	100		90	100		
			Full range			89		89		
		$R_L = 10 \text{ k}\Omega$	25°C	95	106		95	106		
			Full range			94		94		
$r_i$ Input resistance	$V_{IC} = 0$	25°C	$10^{12}$			$10^{12}$			$\Omega$	
$c_i$ Input capacitance	$V_{IC} = 0$ , See Figure 5	Common mode	25°C	11			11			pF
		Differential	25°C	2.5			2.5			
$z_o$ Open-loop output impedance	$f = 1 \text{ MHz}$	25°C	80			80			$\Omega$	
CMRR Common-mode rejection ratio	$V_{IC} = V_{ICRmin}$ , $V_O = 0$ , $R_S = 50 \Omega$	25°C	70	89		70	89		dB	
		Full range			68		68			
$k_{SVR}$ Supply-voltage rejection ratio ( $\Delta V_{CC\pm} / \Delta V_{IO}$ )	$V_{CC\pm} = \pm 5 \text{ V to } \pm 15 \text{ V}$ , $V_O = 0$ , $R_S = 50 \Omega$	25°C	82	99		82	99		dB	
		Full range			80		80			
$I_{CC}$ Supply current (both channels)	$V_O = 0$ , No load	25°C	2.7	2.9	3.6	2.7	2.9	3.6	mA	
		Full range			3.6		3.6			

† Full range is 0°C to 70°C.



**TLE2072, TLE2072A, TLE2072Y**  
**EXCALIBUR LOW-NOISE HIGH-SPEED**  
**JFET-INPUT DUAL OPERATIONAL AMPLIFIERS**

SLOS124A – JUNE 1993 – REVISED AUGUST 1994

**electrical characteristics at specified free-air temperature,  $V_{CC\pm} = \pm 5$  V (unless otherwise noted) (continued)**

PARAMETER	TEST CONDITIONS	$T_A$ †	TLE2072C			TLE2072AC			UNIT
			MIN	TYP	MAX	MIN	TYP	MAX	
$a_x$	Crosstalk attenuation	$V_{IC} = 0$ , $R_L = 2$ k $\Omega$	25°C			120	120		dB
$I_{OS}$	Short-circuit output current	$V_O = 0$	25°C	$V_{ID} = 1$ V			–35		mA
				$V_{ID} = -1$ V			45		

**operating characteristics at specified free-air temperature,  $V_{CC\pm} = \pm 5$  V**

PARAMETER	TEST CONDITIONS	$T_A$ †	TLE2072C			TLE2072AC			UNIT
			MIN	TYP	MAX	MIN	TYP	MAX	
SR+	Positive slew rate	$V_{O(PP)} = \pm 2.3$ V, $A_{VD} = -1$ , $C_L = 100$ pF, $R_L = 2$ k $\Omega$ , See Figure 1	25°C	35		35		V/ $\mu$ s	
			Full range	22		22			
SR–	Negative slew rate	$V_{O(PP)} = \pm 2.3$ V, $A_{VD} = -1$ , $C_L = 100$ pF, $R_L = 2$ k $\Omega$ , See Figure 1	25°C	38		38		V/ $\mu$ s	
			Full range	22		22			
$t_s$	Settling time	$A_{VD} = -1$ , 2-V step, $R_L = 1$ k $\Omega$ , $C_L = 100$ pF	25°C	To 10 mV		0.25		$\mu$ s	
				To 1 mV		0.4			
$V_n$	Equivalent input noise voltage	$R_S = 20$ $\Omega$ , See Figure 3	25°C	f = 10 Hz	28	55	28	55	nV/ $\sqrt{Hz}$
				f = 10 kHz	11.6	17	11.6	17	
$V_{N(PP)}$	Peak-to-peak equivalent input noise voltage	$R_S = 20$ $\Omega$ , See Figure 3	25°C	f = 10 Hz to 10 kHz		6		$\mu$ V	
				f = 0.1 Hz to 10 Hz		0.6			
$I_n$	Equivalent input noise current	$V_{IC} = 0$ , f = 10 kHz	25°C	2.8		2.8		fA/ $\sqrt{Hz}$	
THD + N	Total harmonic distortion plus noise	$V_{O(PP)} = 5$ V, f = 1 kHz, $R_S = 25$ $\Omega$	25°C	0.013%		0.013%			
$B_1$	Unity-gain bandwidth	$V_I = 10$ mV, $C_L = 25$ pF, $R_L = 2$ k $\Omega$ , See Figure 2	25°C	9.4		9.4		MHz	
$B_{OM}$	Maximum output-swing bandwidth	$V_{O(PP)} = 4$ V, $R_L = 2$ k $\Omega$ , $A_{VD} = -1$ , $C_L = 25$ pF	25°C	2.8		2.8		MHz	
$\phi_m$	Phase margin at unity gain	$V_I = 10$ mV, $C_L = 25$ pF, $R_L = 2$ k $\Omega$ , See Figure 2	25°C	56°		56°			

† Full range is 0°C to 70°C.



**TLE2072, TLE2072A, TLE2072Y**  
**EXCALIBUR LOW-NOISE HIGH-SPEED**  
**JFET-INPUT DUAL OPERATIONAL AMPLIFIERS**

SLOS124A – JUNE 1993 – REVISED AUGUST 1994

**electrical characteristics at specified free-air temperature,  $V_{CC\pm} = \pm 15$  V (unless otherwise noted)**

PARAMETER	TEST CONDITIONS	$T_A$ †	TLE2072C			TLE2072AC			UNIT	
			MIN	TYP	MAX	MIN	TYP	MAX		
$V_{IO}$ Input offset voltage	$V_{IC} = 0, V_O = 0,$ $R_S = 50 \Omega$	25°C	1.1	6		0.7	3.5	mV		
		Full range			7.8		5.3			
$\alpha_{VIO}$ Temperature coefficient of input offset voltage		Full range	2.4	25		2.4	25	$\mu\text{V}/^\circ\text{C}$		
$I_{IO}$ Input offset current	$V_{IC} = 0, V_O = 0,$ See Figure 4	25°C	6	100		6	100	pA		
		Full range		1.4		1.4		nA		
$I_{IB}$ Input bias current		25°C	20	175		20	175	pA		
		Full range		5		5		nA		
$V_{ICR}$ Common-mode input voltage range	$R_S = 50 \Omega$	25°C	15 to -11	15 to -11.9		15 to -11	15 to -11.9	V		
		Full range	15 to -10.9			15 to -10.9				
$V_{OM+}$ Maximum positive peak output voltage swing	$I_O = -200 \mu\text{A}$	25°C	13.8	14.1		13.8	14.1	V		
		Full range	13.6			13.6				
	$I_O = -2 \text{ mA}$	25°C	13.5	13.9		13.5	13.9			
		Full range	13.4			13.4				
	$I_O = -20 \text{ mA}$	25°C	11.5	12.3		11.5	12.3			
		Full range	11.5			11.5				
$V_{OM-}$ Maximum negative peak output voltage swing	$I_O = 200 \mu\text{A}$	25°C	-13.8	-14.2		-13.8	-14.2	V		
		Full range	-13.7			-13.7				
	$I_O = 2 \text{ mA}$	25°C	-13.5	-14		-13.5	-14			
		Full range	-13.4			-13.4				
	$I_O = 20 \text{ mA}$	25°C	-11.5	-12.4		-11.5	-12.4			
		Full range	-11.5			-11.5				
$A_{VD}$ Large-signal differential voltage amplification	$V_O = \pm 10 \text{ V}$	$R_L = 600 \Omega$	25°C	80	96		80	96	dB	
			Full range	79			79			
		$R_L = 2 \text{ k}\Omega$	25°C	90	109		90	109		
			Full range	89			89			
		$R_L = 10 \text{ k}\Omega$	25°C	95	118		95	118		
			Full range	94			94			
$r_i$ Input resistance	$V_{IC} = 0$	25°C	$10^{12}$			$10^{12}$			$\Omega$	
$c_i$ Input capacitance	$V_{IC} = 0,$ See Figure 5	Common mode	25°C	7.5			7.5			pF
		Differential	25°C	2.5			2.5			
$z_o$ Open-loop output impedance	$f = 1 \text{ MHz}$	25°C	80			80			$\Omega$	
CMRR Common-mode rejection ratio	$V_{IC} = V_{ICRmin}, V_O = 0,$ $R_S = 50 \Omega$	25°C	80	98		80	98	dB		
		Full range	79			79				
$k_{SVR}$ Supply-voltage rejection ratio ( $\Delta V_{CC\pm}/\Delta V_{IO}$ )	$V_{CC\pm} = \pm 5 \text{ V to } \pm 15 \text{ V}, V_O = 0,$ $R_S = 50 \Omega$	25°C	82	99		82	99	dB		
		Full range	81			81				
$I_{CC}$ Supply current (both channels)	$V_O = 0,$ No load	25°C	2.7	3.1	3.6	2.7	3.1	3.6	mA	
		Full range			3.6			3.6		

† Full range is 0°C to 70°C.





**TLE2072, TLE2072A, TLE2072Y**  
**EXCALIBUR LOW-NOISE HIGH-SPEED**  
**JFET-INPUT DUAL OPERATIONAL AMPLIFIERS**

SLOS124A – JUNE 1993 – REVISED AUGUST 1994

**electrical characteristics at specified free-air temperature,  $V_{CC\pm} = \pm 15$  V (unless otherwise noted) (continued)**

PARAMETER	TEST CONDITIONS	$T_A$ †	TLE2072C			TLE2072AC			UNIT
			MIN	TYP	MAX	MIN	TYP	MAX	
$a_x$	Crosstalk attenuation	$V_{IC} = 0$ , $R_L = 2$ k $\Omega$	25°C			120			dB
$I_{OS}$	Short-circuit output current	$V_O = 0$	25°C	$V_{ID} = 1$ V		-30 -45		mA	
				$V_{ID} = -1$ V		30 48			

**operating characteristics at specified free-air temperature,  $V_{CC\pm} = \pm 15$  V**

PARAMETER	TEST CONDITIONS	$T_A$ †	TLE2072C			TLE2072AC			UNIT
			MIN	TYP	MAX	MIN	TYP	MAX	
SR+	Positive slew rate	$V_{O(PP)} = 10$ V, $A_{VD} = -1$ , $C_L = 100$ pF, $R_L = 2$ k $\Omega$ , See Figure 1	25°C	28	40		28	40	V/ $\mu$ s
			Full range	25		25			
SR-	Negative slew rate		25°C	30	45		30	45	V/ $\mu$ s
			Full range	25		25			
$t_s$	Settling time	$A_{VD} = -1$ , 10-V step, $R_L = 1$ k $\Omega$ , $C_L = 100$ pF	25°C	To 10 mV	0.4		0.4		$\mu$ s
				To 1 mV	1.5		1.5		
$V_n$	Equivalent input noise voltage		25°C	$f = 10$ Hz	28	55	28	55	nV/ $\sqrt{Hz}$
				$f = 10$ kHz	11.6	17	11.6	17	
$V_{N(PP)}$	Peak-to-peak equivalent input noise voltage	$R_S = 20$ $\Omega$ , See Figure 3	25°C	$f = 10$ Hz to 10 kHz	6		6		$\mu$ V
				$f = 0.1$ Hz to 10 Hz	0.6		0.6		
$I_n$	Equivalent input noise current	$V_{IC} = 0$ , $f = 10$ kHz	25°C	2.8		2.8		fA/ $\sqrt{Hz}$	
THD + N	Total harmonic distortion plus noise	$V_{O(PP)} = 20$ V, $A_{VD} = 10$ , $f = 1$ kHz, $R_L = 2$ k $\Omega$ , $R_S = 25$ $\Omega$	25°C	0.008%		0.008%			
$B_1$	Unity-gain bandwidth	$V_I = 10$ mV, $R_L = 2$ k $\Omega$ , $C_L = 25$ pF, See Figure 2	25°C	8	10	8	10	MHz	
$B_{OM}$	Maximum output-swing bandwidth	$V_{O(PP)} = 20$ V, $A_{VD} = -1$ , $R_L = 2$ k $\Omega$ , $C_L = 25$ pF	25°C	478	637	478	637	kHz	
$\phi_m$	Phase margin at unity gain	$V_I = 10$ mV, $R_L = 2$ k $\Omega$ , $C_L = 25$ pF, See Figure 2	25°C	57°		57°			

† Full range is 0°C to 70°C.



**TLE2072, TLE2072A, TLE2072Y**  
**EXCALIBUR LOW-NOISE HIGH-SPEED**  
**JFET-INPUT DUAL OPERATIONAL AMPLIFIERS**

SLOS124A – JUNE 1993 – REVISED AUGUST 1994

**electrical characteristics at specified free-air temperature,  $V_{CC\pm} = \pm 5$  V (unless otherwise noted)**

PARAMETER	TEST CONDITIONS	$T_A$ †	TLE2072I			TLE2072AI			UNIT	
			MIN	TYP	MAX	MIN	TYP	MAX		
$V_{IO}$ Input offset voltage	$V_{IC} = 0,$ $R_S = 50 \Omega,$ $V_O = 0,$	25°C	0.9	6		0.65	3.5	mV		
		Full range			9.1		6.4			
$\alpha V_{IO}$ Temperature coefficient of input offset voltage		Full range	2.4	25		2.4	25	$\mu V/^\circ C$		
$I_{IO}$ Input offset current	$V_{IC} = 0,$ $V_O = 0,$ See Figure 4	25°C	5	100		5	100	pA		
		Full range			5		5	nA		
$I_{IB}$ Input bias current		25°C	15	175		15	175	pA		
		Full range			10		10	nA		
$V_{ICR}$ Common-mode input voltage range	$R_S = 50 \Omega$	25°C	5 to -1	5 to -1.9		5 to -1	5 to -1.9	V		
		Full range	5 to -0.8			5 to -0.8				
$V_{OM+}$ Maximum positive peak output voltage swing	$I_O = -200 \mu A$ $I_O = -2 \text{ mA}$ $I_O = -20 \text{ mA}$	25°C	3.8	4.1		3.8	4.1	V		
		Full range	3.7			3.7				
		25°C	3.5	3.9		3.5	3.9			
		Full range	3.4			3.4				
$V_{OM-}$ Maximum negative peak output voltage swing	$I_O = 200 \mu A$ $I_O = 2 \text{ mA}$ $I_O = 20 \text{ mA}$	25°C	-3.8	-4.2		-3.8	-4.2	V		
		Full range	-3.7			-3.7				
		25°C	-3.5	-4.1		-3.5	-4.1			
		Full range	-3.4			-3.4				
$A_{VD}$ Large-signal differential voltage amplification	$V_O = \pm 2.3 \text{ V}$	$R_L = 600 \Omega$	25°C	80	91		80	91	dB	
			Full range	79			79			
		$R_L = 2 \text{ k}\Omega$	25°C	90	100		90	100		
			Full range	89			89			
		$R_L = 10 \text{ k}\Omega$	25°C	95	106		95	106		
			Full range	94			94			
$r_i$ Input resistance	$V_{IC} = 0$	25°C	$10^{12}$			$10^{12}$			$\Omega$	
$c_i$ Input capacitance	$V_{IC} = 0,$ See Figure 5	Common mode	25°C	11			11			pF
		Differential	25°C	2.5			2.5			
$z_o$ Open-loop output impedance	$f = 1 \text{ MHz}$	25°C	80			80			$\Omega$	
CMRR Common-mode rejection ratio	$V_{IC} = V_{ICRmin},$ $V_O = 0,$ $R_S = 50 \Omega$	25°C	70	89		70	89	dB		
		Full range	68			68				
$k_{SVR}$ Supply-voltage rejection ratio ( $\Delta V_{CC\pm}/\Delta V_{IO}$ )	$V_{CC\pm} = \pm 5 \text{ V to } \pm 15 \text{ V},$ $V_O = 0,$ $R_S = 50 \Omega$	25°C	82	99		82	99	dB		
		Full range	80			80				
$I_{CC}$ Supply current (both channels)	$V_O = 0,$ No load	25°C	2.7	2.9	3.6	2.7	2.9	3.6	mA	
		Full range			3.6			3.6		

† Full range is  $-40^\circ C$  to  $85^\circ C$ .



**TLE2072, TLE2072A, TLE2072Y**  
**EXCALIBUR LOW-NOISE HIGH-SPEED**  
**JFET-INPUT DUAL OPERATIONAL AMPLIFIERS**

SLOS124A – JUNE 1993 – REVISED AUGUST 1994

**electrical characteristics at specified free-air temperature,  $V_{CC\pm} = \pm 5$  V (unless otherwise noted) (continued)**

PARAMETER	TEST CONDITIONS	$T_A$ †	TLE2072I			TLE2072AI			UNIT
			MIN	TYP	MAX	MIN	TYP	MAX	
$a_x$	Crosstalk attenuation	$V_{IC} = 0$ , $R_L = 2$ k $\Omega$	25°C			120	120		dB
$I_{OS}$	Short-circuit output current	$V_O = 0$	25°C	$V_{ID} = 1$ V			–35		mA
				$V_{ID} = -1$ V			45		

**operating characteristics at specified free-air temperature,  $V_{CC\pm} = \pm 5$  V**

PARAMETER	TEST CONDITIONS	$T_A$ †	TLE2072I			TLE2072AI			UNIT
			MIN	TYP	MAX	MIN	TYP	MAX	
SR+	Positive slew rate	$V_{O(PP)} = \pm 2.3$ V, $A_{VD} = -1$ , $R_L = 2$ k $\Omega$ , $C_L = 100$ pF, See Figure 1	25°C	35		35		V/ $\mu$ s	
			Full range	20		20			
SR–	Negative slew rate	$V_{O(PP)} = \pm 2.3$ V, $A_{VD} = -1$ , $R_L = 2$ k $\Omega$ , $C_L = 100$ pF, See Figure 1	25°C	38		38		V/ $\mu$ s	
			Full range	20		20			
$t_s$	Settling time	$A_{VD} = -1$ , 2-V step, $R_L = 1$ k $\Omega$ , $C_L = 100$ pF	25°C	To 10 mV	0.25		0.25		$\mu$ s
				To 1 mV	0.4		0.4		
$V_n$	Equivalent input noise voltage	$R_S = 20$ $\Omega$ , See Figure 3	25°C	f = 10 Hz	28	55	28	55	nV/ $\sqrt{\text{Hz}}$
				f = 10 kHz	11.6	17	11.6	17	
$V_{N(PP)}$	Peak-to-peak equivalent input noise voltage	$R_S = 20$ $\Omega$ , See Figure 3	25°C	f = 10 Hz to 10 kHz	6		6		$\mu$ V
				f = 0.1 Hz to 10 Hz	0.6		0.6		
$I_n$	Equivalent input noise current	$V_{IC} = 0$ , f = 10 kHz	25°C	2.8		2.8		fA/ $\sqrt{\text{Hz}}$	
THD + N	Total harmonic distortion plus noise	$V_{O(PP)} = 5$ V, f = 1 kHz, $R_S = 25$ $\Omega$	25°C	0.013%		0.013%			
$B_1$	Unity-gain bandwidth	$V_I = 10$ mV, $C_L = 25$ pF, $R_L = 2$ k $\Omega$ , See Figure 2	25°C	9.4		9.4		MHz	
$B_{OM}$	Maximum output-swing bandwidth	$V_{O(PP)} = 4$ V, $R_L = 2$ k $\Omega$ , $C_L = 25$ pF	25°C	2.8		2.8		MHz	
$\phi_m$	Phase margin at unity gain	$V_I = 10$ mV, $C_L = 25$ pF, $R_L = 2$ k $\Omega$ , See Figure 2	25°C	56°		56°			

† Full range is 40°C to 85°C.

**TLE2072, TLE2072A, TLE2072Y**  
**EXCALIBUR LOW-NOISE HIGH-SPEED**  
**JFET-INPUT DUAL OPERATIONAL AMPLIFIERS**

SLOS124A – JUNE 1993 – REVISED AUGUST 1994

**electrical characteristics at specified free-air temperature,  $V_{CC\pm} = \pm 15$  V (unless otherwise noted)**

PARAMETER	TEST CONDITIONS	$T_A$ †	TLE2072I			TLE2072AI			UNIT	
			MIN	TYP	MAX	MIN	TYP	MAX		
$V_{IO}$ Input offset voltage	$V_{IC} = 0,$ $R_S = 50 \Omega,$ $V_O = 0,$	25°C	1.1	6		0.7	3.5	mV		
		Full range			9.1		6.4			
$\alpha_{VIO}$ Temperature coefficient of input offset voltage		Full range	2.4	25		2.4	25	$\mu\text{V}/^\circ\text{C}$		
$I_{IO}$ Input offset current	$V_{IC} = 0,$ $V_O = 0,$ See Figure 4	25°C	6	100		6	100	pA		
		Full range			5		5	nA		
$I_{IB}$ Input bias current		25°C	20	175		20	175	pA		
		Full range			10		10	nA		
$V_{ICR}$ Common-mode input voltage range	$R_S = 50 \Omega$	25°C	15 to -11	15 to -11.9		15 to -11	15 to -11.9	V		
		Full range	15 to -10.8			15 to -10.8				
$V_{OM+}$ Maximum positive peak output voltage swing	$I_O = -200 \mu\text{A}$	25°C	13.8	14.1		13.8	14.1	V		
		Full range	13.7			13.7				
	$I_O = -2 \text{ mA}$	25°C	13.5	13.9		13.5	13.9			
		Full range	13.4			13.4				
	$I_O = -20 \text{ mA}$	25°C	11.5	12.3		11.5	12.3			
		Full range	11.5			11.5				
$V_{OM-}$ Maximum negative peak output voltage swing	$I_O = 200 \mu\text{A}$	25°C	-13.8	-14.2		-13.8	-14.2	V		
		Full range	-13.7			-13.7				
	$I_O = 2 \text{ mA}$	25°C	-13.5	-14		-13.5	-14			
		Full range	-13.4			-13.4				
	$I_O = 20 \text{ mA}$	25°C	-11.5	-12.4		-11.5	-12.4			
		Full range	-11.5			-11.5				
$A_{VD}$ Large-signal differential voltage amplification	$V_O = \pm 10 \text{ V}$	$R_L = 600 \Omega$	25°C	80	96		80	96	dB	
			Full range	79			79			
		$R_L = 2 \text{ k}\Omega$	25°C	90	109		90	109		
			Full range	89			89			
		$R_L = 10 \text{ k}\Omega$	25°C	95	118		95	118		
			Full range	94			94			
$r_i$ Input resistance	$V_{IC} = 0$	25°C	$10^{12}$			$10^{12}$			$\Omega$	
$c_i$ Input capacitance	$V_{IC} = 0,$ See Figure 5	Common mode	25°C	7.5			7.5			pF
		Differential	25°C	2.5			2.5			
$z_o$ Open-loop output impedance	$f = 1 \text{ MHz}$	25°C	80			80			$\Omega$	
CMRR Common-mode rejection ratio	$V_{IC} = V_{ICRmin},$ $V_O = 0,$ $R_S = 50 \Omega$	25°C	80	98		80	98	dB		
		Full range	79			79				
$k_{SVR}$ Supply-voltage rejection ratio ( $\Delta V_{CC\pm}/\Delta V_{IO}$ )	$V_{CC\pm} = \pm 5 \text{ V to } \pm 15 \text{ V},$ $V_O = 0,$ $R_S = 50 \Omega$	25°C	82	99		82	99	dB		
		Full range	80			80				
$I_{CC}$ Supply current (both channels)	$V_O = 0,$ No load	25°C	2.7	3.1	3.6	2.7	3.1	3.6	mA	
		Full range			3.6			3.6		

† Full range is  $-40^\circ\text{C}$  to  $85^\circ\text{C}$ .



**TLE2072, TLE2072A, TLE2072Y**  
**EXCALIBUR LOW-NOISE HIGH-SPEED**  
**JFET-INPUT DUAL OPERATIONAL AMPLIFIERS**

SLOS124A – JUNE 1993 – REVISED AUGUST 1994

**electrical characteristics at specified free-air temperature,  $V_{CC\pm} = \pm 15$  V (unless otherwise noted) (continued)**

PARAMETER	TEST CONDITIONS	$T_A$ †	TLE2072I			TLE2072AI			UNIT
			MIN	TYP	MAX	MIN	TYP	MAX	
$a_x$	Crosstalk attenuation	$V_{IC} = 0$ , $R_L = 2$ k $\Omega$	25°C			120			dB
$I_{OS}$	Short-circuit output current	$V_O = 0$	25°C	$V_{ID} = 1$ V		-30 -45		mA	
				$V_{ID} = -1$ V		30 48			

**operating characteristics at specified free-air temperature,  $V_{CC\pm} = \pm 15$  V**

PARAMETER	TEST CONDITIONS	$T_A$ †	TLE2072I			TLE2072AI			UNIT
			MIN	TYP	MAX	MIN	TYP	MAX	
SR+	Positive slew rate	$V_O(PP) = \pm 10$ V, $A_{VD} = -1$ , $C_L = 100$ pF, $R_L = 2$ k $\Omega$ , See Figure 1	25°C	28	40		28	40	V/ $\mu$ s
			Full range	22		22			
SR-	Negative slew rate		25°C	30	45		30	45	V/ $\mu$ s
			Full range	22		22			
$t_s$	Settling time	$A_{VD} = -1$ , 10-V step, $R_L = 1$ k $\Omega$ , $C_L = 100$ pF	25°C	To 10 mV	0.4		0.4		$\mu$ s
				To 1 mV	1.5		1.5		
$V_n$	Equivalent input noise voltage		25°C	f = 10 Hz	28	55	28	55	nV/ $\sqrt{Hz}$
				f = 10 kHz	11.6	17	11.6	17	
$V_N(PP)$	Peak-to-peak equivalent input noise voltage	$R_S = 20$ $\Omega$ , See Figure 3	25°C	f = 0 Hz to 10 kHz	6		6		$\mu$ V
				f = 0.1 Hz to 10 Hz	0.6		0.6		
$I_n$	Equivalent input noise current	$V_{IC} = 0$ , f = 10 kHz	25°C	2.8		2.8		fA/ $\sqrt{Hz}$	
THD + N	Total harmonic distortion plus noise	$V_O(PP) = 20$ V, $A_{VD} = 10$ , f = 1 kHz, $R_L = 2$ k $\Omega$ , $R_S = 25$ $\Omega$	25°C	0.008%		0.008%			
$B_1$	Unity-gain bandwidth	$V_I = 10$ mV, $R_L = 2$ k $\Omega$ , $C_L = 25$ pF, See Figure 2	25°C	8	10	8	10	MHz	
$B_{OM}$	Maximum output-swing bandwidth	$V_O(PP) = 20$ V, $A_{VD} = -1$ , $R_L = 2$ k $\Omega$ , $C_L = 25$ pF	25°C	478	637	478	637	kHz	
$\phi_m$	Phase margin at unity gain	$V_I = 10$ mV, $R_L = 2$ k $\Omega$ , $C_L = 25$ pF, See Figure 2	25°C	57°		57°			

† Full range is -40°C to 85°C.

**TLE2072, TLE2072A, TLE2072Y**  
**EXCALIBUR LOW-NOISE HIGH-SPEED**  
**JFET-INPUT DUAL OPERATIONAL AMPLIFIERS**

SLOS124A – JUNE 1993 – REVISED AUGUST 1994

**electrical characteristics at specified free-air temperature,  $V_{CC\pm} = \pm 5$  V (unless otherwise noted)**

PARAMETER	TEST CONDITIONS	$T_A$ †	TLE2072M			TLE2072AM			UNIT	
			MIN	TYP	MAX	MIN	TYP	MAX		
$V_{IO}$ Input offset voltage	$V_{IC} = 0,$ $R_S = 50 \Omega,$ $V_O = 0,$	25°C	0.9		6	0.65		3.5	mV	
		Full range	10.5			8				
$\alpha_{VIO}$ Temperature coefficient of input offset voltage		Full range	2.3		25*	2.3		25*	$\mu\text{V}/^\circ\text{C}$	
$I_{IO}$ Input offset current	$V_{IC} = 0,$ $V_O = 0,$ See Figure 4	25°C	5		100	5		100	pA	
		Full range	20			20			nA	
$I_{IB}$ Input bias current		25°C	15		175	15		175	pA	
		Full range	65			65			nA	
$V_{ICR}$ Common-mode input voltage range	$R_S = 50 \Omega$	25°C	5 to -1	5 to -1.9		5 to -1	5 to -1.9		V	
		Full range	5 to -0.8			5 to -0.8				
$V_{OM+}$ Maximum positive peak output voltage swing	$I_O = -200 \mu\text{A}$	25°C	3.8	4.1		3.8	4.1		V	
		Full range	3.6			3.6				
		25°C	3.5	3.9		3.5	3.9			
		Full range	3.3			3.3				
$V_{OM-}$ Maximum negative peak output voltage swing	$I_O = -20 \text{ mA}$	25°C	1.5	2.3		1.5	2.3		V	
		Full range	1.4			1.4				
		25°C	200 $\mu\text{A}$	-3.8	-4.2		-3.8	-4.2		
		Full range	-3.6			-3.6				
$V_{OM-}$ Maximum negative peak output voltage swing	$I_O = 2 \text{ mA}$	25°C	-3.5	-4.1		-3.5	-4.1		V	
		Full range	-3.3			-3.3				
		25°C	$I_O = 20 \text{ mA}$	-1.5	-2.4		-1.5	-2.4		
		Full range	-1.4			-1.4				
$A_{VD}$ Large-signal differential voltage amplification	$V_O = \pm 2.3 \text{ V}$	$R_L = 600 \Omega$	25°C	80	91		80	91		dB
			Full range	78			78			
		$R_L = 2 \text{ k}\Omega$	25°C	90	100		90	100		
			Full range	88			88			
		$R_L = 10 \text{ k}\Omega$	25°C	95	106		95	106		
			Full range	93			93			
$r_i$ Input resistance	$V_{IC} = 0$	25°C	$10^{12}$			$10^{12}$			$\Omega$	
$c_i$ Input capacitance	$V_{IC} = 0,$ See Figure 5	Common mode	25°C	11		11			pF	
		Differential	25°C	2.5		2.5				
$z_o$ Open-loop output impedance	$f = 1 \text{ MHz}$	25°C	80		80		$\Omega$			
CMRR Common-mode rejection ratio	$V_{IC} = V_{ICRmin},$ $V_O = 0,$ $R_S = 50 \Omega$	25°C	70	89		70	89		dB	
		Full range	68			68				

\*On products compliant to MIL-STD-883, Class B, this parameter is not production tested.

† Full range is  $-55^\circ\text{C}$  to  $125^\circ\text{C}$ .



**TLE2072, TLE2072A, TLE2072Y**  
**EXCALIBUR LOW-NOISE HIGH-SPEED**  
**JFET-INPUT DUAL OPERATIONAL AMPLIFIERS**  
 SLOS124A – JUNE 1993 – REVISED AUGUST 1994

**electrical characteristics at specified free-air temperature,  $V_{CC\pm} = \pm 5$  V (unless otherwise noted) (continued)**

PARAMETER	TEST CONDITIONS	$T_A$ †	TLE2072M			TLE2072AM			UNIT	
			MIN	TYP	MAX	MIN	TYP	MAX		
$k_{SVR}$	Supply-voltage rejection ratio ( $\Delta V_{CC\pm} / \Delta V_{IO}$ )	$V_{CC\pm} = \pm 5$ V to $\pm 15$ V, $V_O = 0$ , $R_S = 50 \Omega$	Full range	80			80			dB
$I_{CC}$	Supply current (both channels)	$V_O = 0$ , No load	25°C	2.7	2.9	3.6	2.7	2.9	3.6	mA
			Full range			3.6			3.6	
$a_x$	Crosstalk attenuation	$V_{IC} = 0$ , $R_L = 2 \text{ k}\Omega$	25°C	120			120			dB
$I_{OS}$	Short-circuit output current	$V_O = 0$	$V_{ID} = 1$ V	-35			-35			mA
			$V_{ID} = -1$ V	45			45			

**operating characteristics at specified free-air temperature,  $V_{CC\pm} = \pm 5$  V**

PARAMETER	TEST CONDITIONS	$T_A$ †	TLE2072M			TLE2072AM			UNIT	
			MIN	TYP	MAX	MIN	TYP	MAX		
$SR+$	Positive slew rate	$V_O(PP) = \pm 2.3$ V, $A_{VD} = -1$ , $R_L = 2 \text{ k}\Omega$ , $C_L = 100 \text{ pF}$ , See Figure 1	25°C	35			35			V/ $\mu$ s
			Full range	18*			18*			
$SR-$	Negative slew rate		25°C	38			38			V/ $\mu$ s
			Full range	18*			18*			
$t_s$	Settling time	$A_{VD} = -1$ , 2-V step, $R_L = 1 \text{ k}\Omega$ , $C_L = 100 \text{ pF}$	To 10 mV	0.25			0.25			$\mu$ s
			To 1 mV	0.4			0.4			
$V_n$	Equivalent input noise voltage		f = 10 Hz	28		55*	28		55*	nV/ $\sqrt{\text{Hz}}$
			f = 10 kHz	11.6		17*	11.6		17*	
$V_N(PP)$	Peak-to-peak equivalent input noise voltage	$R_S = 20 \Omega$ , See Figure 3	f = 10 Hz to 10 kHz	6			6			$\mu$ V
			f = 0.1 Hz to 10 Hz	0.6			0.6			
$I_n$	Equivalent input noise current	$V_{IC} = 0$ , f = 10 kHz	25°C	2.8			2.8			fA/ $\sqrt{\text{Hz}}$
THD + N	Total harmonic distortion plus noise	$V_O(PP) = 5$ V, f = 1 kHz, $R_S = 25 \Omega$	25°C	0.013%			0.013%			
$B_1$	Unity-gain bandwidth	$V_I = 10$ mV, $C_L = 25 \text{ pF}$ , $R_L = 2 \text{ k}\Omega$ , See Figure 2	25°C	9.4			9.4			MHz
$B_{OM}$	Maximum output-swing bandwidth	$V_O(PP) = 4$ V, $R_L = 2 \text{ k}\Omega$ , $A_{VD} = -1$ , $C_L = 25 \text{ pF}$	25°C	2.8			2.8			MHz
$\phi_m$	Phase margin at unity gain	$V_I = 10$ mV, $C_L = 25 \text{ pF}$ , $R_L = 2 \text{ k}\Omega$ , See Figure 2	25°C	56°			56°			

\*On products compliant to MIL-STD-883, Class B, this parameter is not production tested.

† Full range is -55°C to 125°C.

**TLE2072, TLE2072A, TLE2072Y**  
**EXCALIBUR LOW-NOISE HIGH-SPEED**  
**JFET-INPUT DUAL OPERATIONAL AMPLIFIERS**

SLOS124A – JUNE 1993 – REVISED AUGUST 1994

**electrical characteristics at specified free-air temperature,  $V_{CC\pm} = \pm 15$  V (unless otherwise noted)**

PARAMETER	TEST CONDITIONS	$T_A$ †	TLE2072M			TLE2072AM			UNIT	
			MIN	TYP	MAX	MIN	TYP	MAX		
$V_{IO}$ Input offset voltage	$V_{IC} = 0,$ $R_S = 50 \Omega$	25°C	1.1	6		0.7	3.5	mV		
		Full range			10.5		8			
$\alpha_{VIO}$ Temperature coefficient of input offset voltage		Full range	2.4	25*		2.4	25*	$\mu\text{V}/^\circ\text{C}$		
$I_{IO}$ Input offset current	$V_{IC} = 0,$ $V_O = 0,$ See Figure 4	25°C	6	100		6	100	pA		
		Full range		20		20		nA		
$I_{IB}$ Input bias current		25°C	20	175		20	175	pA		
		Full range		65		65		nA		
$V_{ICR}$ Common-mode input voltage range	$R_S = 50 \Omega$	25°C	15 to -11	15 to -11.9		15 to -11	15 to -11.9	V		
		Full range	15 to -10.8			15 to -10.8				
$V_{OM+}$ Maximum positive peak output voltage swing	$I_O = -200 \mu\text{A}$	25°C	13.8	14.1		13.8	14.1	V		
		Full range	13.6			13.6				
		25°C	13.5	13.9		13.5	13.9			
		Full range	13.3			13.3				
$V_{OM-}$ Maximum negative peak output voltage swing	$I_O = -20 \text{ mA}$	25°C	11.5	12.3		11.5	12.3	V		
		Full range	11.4			11.4				
		25°C	11.5	12.3		11.5	12.3			
		Full range	11.4			11.4				
$V_{OM-}$ Maximum negative peak output voltage swing	$I_O = 200 \mu\text{A}$	25°C	-13.8	-14.2		-13.8	-14.2	V		
		Full range	-13.6			-13.6				
		25°C	-13.5	-14		-13.5	-14			
		Full range	-13.3			-13.3				
$V_{OM-}$ Maximum negative peak output voltage swing	$I_O = 2 \text{ mA}$	25°C	-11.5	-12.4		-11.5	-12.4	V		
		Full range	-11.4			-11.4				
		25°C	-11.5	-12.4		-11.5	-12.4			
		Full range	-11.4			-11.4				
$A_{VD}$ Large-signal differential voltage amplification	$V_O = \pm 10 \text{ V}$	$R_L = 600 \Omega$	25°C	80	96		80	96	dB	
			Full range	78			78			
		$R_L = 2 \text{ k}\Omega$	25°C	90	109		90	109		
			Full range	89			89			
		$R_L = 10 \text{ k}\Omega$	25°C	95	118		95	118		
			Full range	93			93			
$r_i$ Input resistance	$V_{IC} = 0$	25°C	$10^{12}$			$10^{12}$			$\Omega$	
$c_i$ Input capacitance	$V_{IC} = 0,$ See Figure 5	Common mode	25°C	7.5			7.5			pF
		Differential	25°C	2.5			2.5			
$z_o$ Open-loop output impedance	$f = 1 \text{ MHz}$	25°C	80			80			$\Omega$	
CMRR Common-mode rejection ratio	$V_{IC} = V_{ICRmin},$ $V_O = 0,$ $R_S = 50 \Omega$	25°C	80	98		80	98	dB		
		Full range	78			78				
$k_{SVR}$ Supply-voltage rejection ratio ( $\Delta V_{CC\pm}/\Delta V_{IO}$ )	$V_{CC\pm} = \pm 5 \text{ V to } \pm 15 \text{ V},$ $V_O = 0,$ $R_S = 50 \Omega$	25°C	82	99		82	99	dB		
		Full range	80			80				

\*On products compliant to MIL-STD-883, Class B, this parameter is not production tested.

† Full range is  $-55^\circ\text{C}$  to  $125^\circ\text{C}$ .





**TLE2072, TLE2072A, TLE2072Y**  
**EXCALIBUR LOW-NOISE HIGH-SPEED**  
**JFET-INPUT DUAL OPERATIONAL AMPLIFIERS**

SLOS124A – JUNE 1993 – REVISED AUGUST 1994

**electrical characteristics at specified free-air temperature,  $V_{CC\pm} = \pm 15$  V (unless otherwise noted)**

PARAMETER	TEST CONDITIONS	$T_A$ †	TLE2072M			TLE2072AM			UNIT	
			MIN	TYP	MAX	MIN	TYP	MAX		
$I_{CC}$	Supply current (both channels)	$V_O = 0$ , No load	25°C	2.7	3.1	3.6	2.7	3.1	3.6	mA
			Full range	3.6			3.6			
$a_x$	Crosstalk attenuation	$V_{IC} = 0$ , $R_L = 2$ k $\Omega$	25°C	120			120			dB
$I_{OS}$	Short-circuit output current	$V_O = 0$	25°C	$V_{ID} = 1$ V	-30	-45	-30	-45	mA	
				$V_{ID} = -1$ V	30	48	30	48		

**operating characteristics at specified free-air temperature,  $V_{CC\pm} = \pm 15$  V**

PARAMETER	TEST CONDITIONS	$T_A$ †	TLE2072M			TLE2072AM			UNIT		
			MIN	TYP	MAX	MIN	TYP	MAX			
SR+	Positive slew rate	$V_O(PP) = 10$ V, $A_{VD} = -1$ , $R_L = 2$ k $\Omega$ , $C_L = 100$ pF, See Figure 1	25°C	28	40		28	40	V/ $\mu$ s		
			Full range	20			20				
SR-	Negative slew rate		25°C	30	45		30	45	V/ $\mu$ s		
			Full range	20			20				
$t_s$	Settling time	$A_{VD} = -1$ , 10-V step, $R_L = 1$ k $\Omega$ , $C_L = 100$ pF	To 10 mV	0.4			0.4			$\mu$ s	
			To 1 mV	1.5			1.5				
$V_n$	Equivalent input noise voltage		25°C	f = 10 Hz	28	55*	28	55*	nV/ $\sqrt{Hz}$		
				f = 10 kHz	11.6	17*	11.6	17*			
$V_N(PP)$	Peak-to-peak equivalent input noise voltage	$R_S = 20$ $\Omega$ , See Figure 3	25°C	f = 10 Hz to 10 kHz	6			6			$\mu$ V
				f = 0.1 Hz to 10 Hz	0.6			0.6			
$I_n$	Equivalent input noise current	$V_{IC} = 0$ , f = 10 kHz	25°C	2.8			2.8			fA/ $\sqrt{Hz}$	
THD + N	Total harmonic distortion plus noise	$V_O(PP) = 20$ V, f = 1 kHz, $R_S = 25$ $\Omega$	25°C	0.008%			0.008%				
$B_1$	Unity-gain bandwidth	$V_I = 10$ mV, $C_L = 25$ pF, $R_L = 2$ k $\Omega$ , See Figure 2	25°C	8*	10		8*	10	MHz		
$B_{OM}$	Maximum output-swing bandwidth	$V_O(PP) = 20$ V, $R_L = 2$ k $\Omega$ , $C_L = 25$ pF, $A_{VD} = -1$	25°C	478*	637		478*	637	kHz		
$\phi_m$	Phase margin at unity gain	$V_I = 10$ mV, $C_L = 25$ pF, $R_L = 2$ k $\Omega$ , See Figure 2	25°C	57°			57°				

\*On products compliant to MIL-STD-883, Class B, this parameter is not production tested.

† Full range is -55°C to 125°C.



# TLE2072, TLE2072A, TLE2072Y EXCALIBUR LOW-NOISE HIGH-SPEED JFET-INPUT DUAL OPERATIONAL AMPLIFIERS

SLOS124A – JUNE 1993 – REVISED AUGUST 1994

electrical characteristics at  $V_{CC\pm} = \pm 15\text{ V}$ ,  $T_A = 25^\circ\text{C}$

PARAMETER	TEST CONDITIONS	TLE2072Y			UNIT
		MIN	TYP	MAX	
$V_{IO}$ Input offset voltage	$V_{IC} = 0$ , $V_O = 0$ , $R_S = 50\ \Omega$		1.1	6	mV
$I_{IO}$ Input offset current	$V_{IC} = 0$ , $V_O = 0$ , See Figure 4		6	100	pA
$I_{IB}$ Input bias current			20	175	
$V_{ICR}$ Common-mode input voltage range	$R_S = 50\ \Omega$	15 to -11	15 to 11.9		V
$V_{OM+}$ Maximum positive peak output voltage swing	$I_O = -200\ \mu\text{A}$	13.8	14.1		V
	$I_O = -2\ \text{mA}$	13.5	13.9		
	$I_O = -20\ \text{mA}$	11.5	12.3		
$V_{OM-}$ Maximum negative peak output voltage swing	$I_O = 200\ \mu\text{A}$	-13.8	-14.2		V
	$I_O = 2\ \text{mA}$	-13.5	-14		
	$I_O = 20\ \text{mA}$	-11.5	-12.4		
$A_{VD}$ Large-signal differential voltage amplification	$V_O = \pm 10\ \text{V}$	$R_L = 600\ \Omega$	80	96	dB
		$R_L = 2\ \text{k}\Omega$	90	109	
		$R_L = 10\ \text{k}\Omega$	95	118	
$r_i$ Input resistance	$V_{IC} = 0$	$10^{12}$			$\Omega$
$c_i$ Input capacitance	$V_{IC} = 0$ , See Figure 5	Common mode	7.5		pF
		Differential	2.5		
$z_o$ Open-loop output impedance	$f = 1\ \text{MHz}$	80			$\Omega$
CMRR Common-mode rejection ratio	$V_{IC} = V_{ICRmin}$ , $V_O = 0$ , $R_S = 50\ \Omega$	80	98		dB
$k_{SVR}$ Supply-voltage rejection ratio ( $\Delta V_{CC\pm}/\Delta V_{IO}$ )	$V_{CC\pm} = \pm 5\ \text{V to } \pm 15\ \text{V}$ , $V_O = 0$ , $R_S = 50\ \Omega$	82	99		dB
$I_{CC}$ Supply current (both channels)	$V_O = 0$ , No load	2.7	3.1	3.6	mA
$I_{OS}$ Short-circuit output current	$V_O = 0$	$V_{ID} = 1\ \text{V}$	-30	-45	mA
		$V_{ID} = -1\ \text{V}$	30	48	

## PARAMETER MEASUREMENT INFORMATION

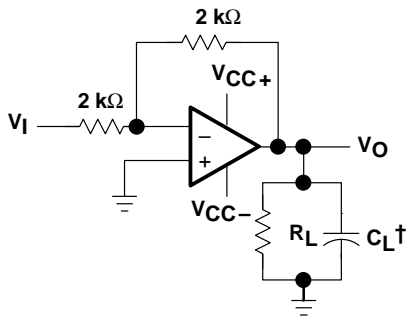


Figure 1. Slew-Rate Test Circuit

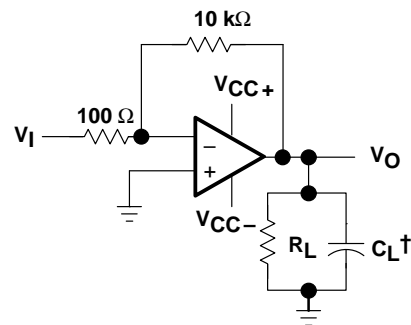


Figure 2. Unity-Gain Bandwidth and Phase-Margin Test Circuit

† Includes fixture capacitance

### PARAMETER MEASUREMENT INFORMATION

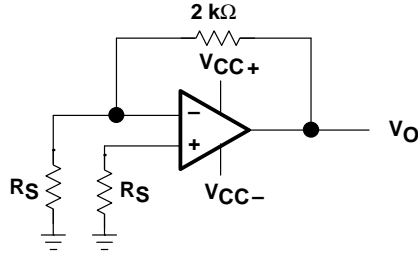


Figure 3. Noise-Voltage Test Circuit

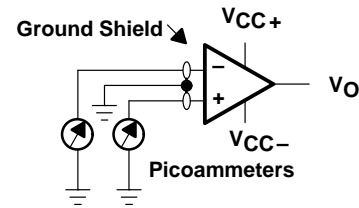


Figure 4. Input-Bias and Offset-Current Test Circuit

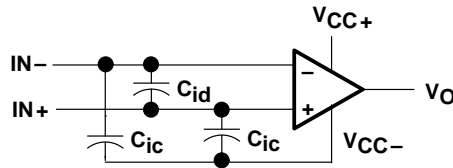


Figure 5. Internal Input Capacitance

#### typical values

Typical values presented in this data sheet represent the median (50% point) of device parametric performance.

#### input bias and offset current

At the picoampere bias-current level typical of the TLE2072 and TLE2072A, accurate measurement of the bias becomes difficult. Not only does this measurement require a picoammeter, but test socket leakages can easily exceed the actual device bias currents. To accurately measure these small currents, Texas Instruments uses a two-step process. The socket leakage is measured using picoammeters with bias voltages applied but with no device in the socket. The device is then inserted in the socket and a second test is performed that measures both the socket leakage and the device input bias current. The two measurements are then subtracted algebraically to determine the bias current of the device.

### TYPICAL CHARACTERISTICS

Table of Graphs

			FIGURE
$V_{IO}$	Input offset voltage	Distribution	6
$\alpha_{VIO}$	Temperature coefficient	Distribution	7
$I_{IO}$	Input offset current	vs Free-air temperature	8, 9
$I_{IB}$	Input bias current	vs Free-air temperature	8, 9
		vs Supply voltage	10
$V_{ICR}$	Common-mode input voltage range	vs Free-air temperature	11
$V_{ID}$	Differential input voltage	vs Output voltage	12, 13

**TLE2072, TLE2072A, TLE2072Y**  
**EXCALIBUR LOW-NOISE HIGH-SPEED**  
**JFET-INPUT DUAL OPERATIONAL AMPLIFIERS**

SLOS124A – JUNE 1993 – REVISED AUGUST 1994

**TYPICAL CHARACTERISTICS**

**Table of Graphs (Continued)**

		FIGURE
$V_{OM+}$	Maximum positive peak output voltage	vs Output current vs Free-air temperature vs Supply voltage 14 16, 17 18
$V_{OM-}$	Maximum negative peak output voltage	vs Output current vs Free-air temperature vs Supply voltage 15 16, 17 18
$V_{O(PP)}$	Maximum peak-to-peak output voltage	vs Frequency 19
$V_O$	Output voltage	vs Settling time 20
$A_{VD}$	Differential voltage amplification	vs Load resistance vs Free-air temperature vs Frequency 21 22, 23 24, 25
CMRR	Common-mode rejection ratio	vs Frequency vs Free-air temperature 26 27
$k_{SVR}$	Supply-voltage rejection ratio	vs Frequency vs Free-air temperature 28 29
$I_{CC}$	Supply current	vs Supply voltage vs Free-air temperature vs Differential input voltage 30 31 32, 33
$I_{OS}$	Short-circuit output current	vs Supply voltage vs Elapsed time vs Free-air temperature 34 35 36
SR	Slew rate	vs Free-air temperature vs Load resistance vs Differential input voltage 37, 38 39 40
$V_n$	Equivalent input noise voltage	vs Frequency 41
$V_n$	Input-referred noise voltage	vs Noise bandwidth Over a 10-second time interval 42 43
	Third-octave spectral noise density	vs Frequency bands 44
THD + N	Total harmonic distortion plus noise	vs Frequency 45, 46
$B_1$	Unity-gain bandwidth	vs Load capacitance 47
	Gain-bandwidth product	vs Free-air temperature vs Supply voltage 48 49
	Gain margin	vs Load capacitance 50
$\phi_m$	Phase margin	vs Free-air temperature vs Supply voltage vs Load capacitance 51 52 53
	Phase shift	vs Frequency 24, 25
	Large-signal pulse response, noninverting	vs Time 54
	Small-signal pulse response	vs Time 55
$z_O$	Closed-loop output impedance	vs Frequency 56
$a_x$	Crosstalk attenuation	vs Frequency 57

TYPICAL CHARACTERISTICS†

DISTRIBUTION OF TLE2072  
 INPUT OFFSET VOLTAGE

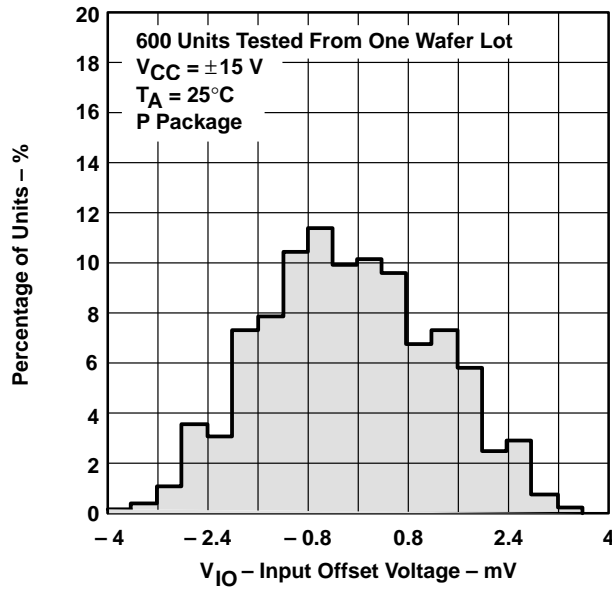


Figure 6

DISTRIBUTION OF TLE2072 INPUT OFFSET  
 VOLTAGE TEMPERATURE COEFFICIENT

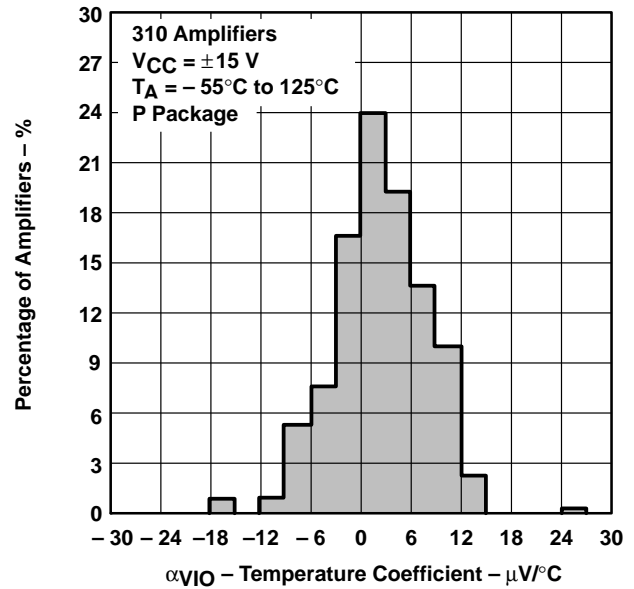


Figure 7

INPUT BIAS CURRENT AND  
 INPUT OFFSET CURRENT  
 vs  
 FREE-AIR TEMPERATURE

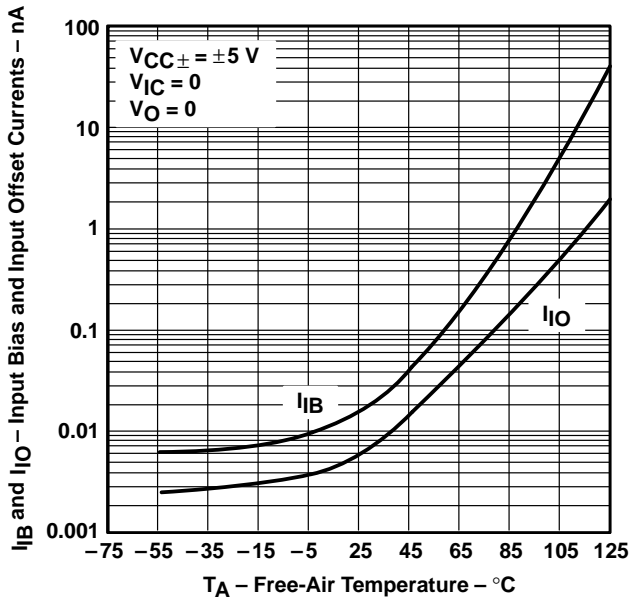


Figure 8

INPUT BIAS CURRENT AND  
 INPUT OFFSET CURRENT  
 vs  
 FREE-AIR TEMPERATURE

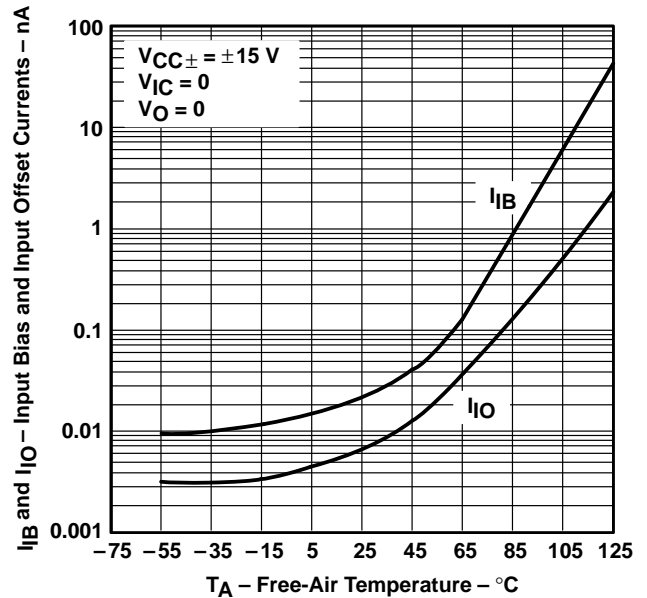


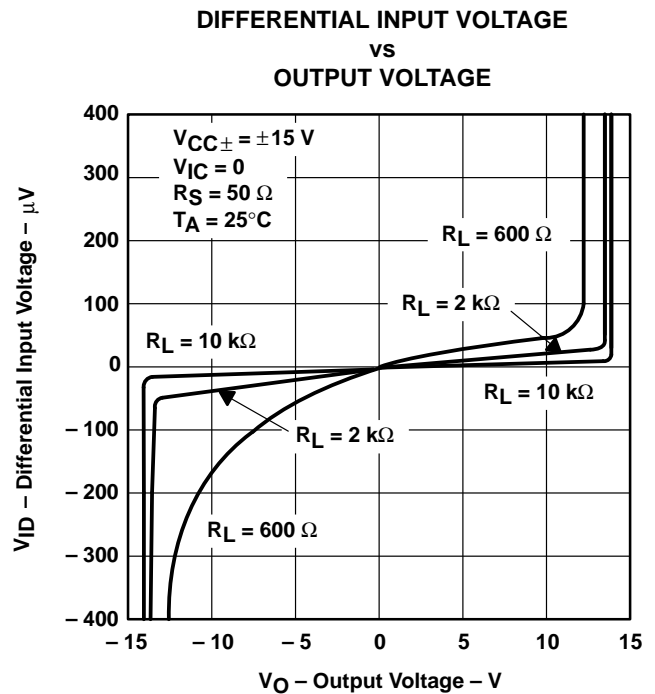
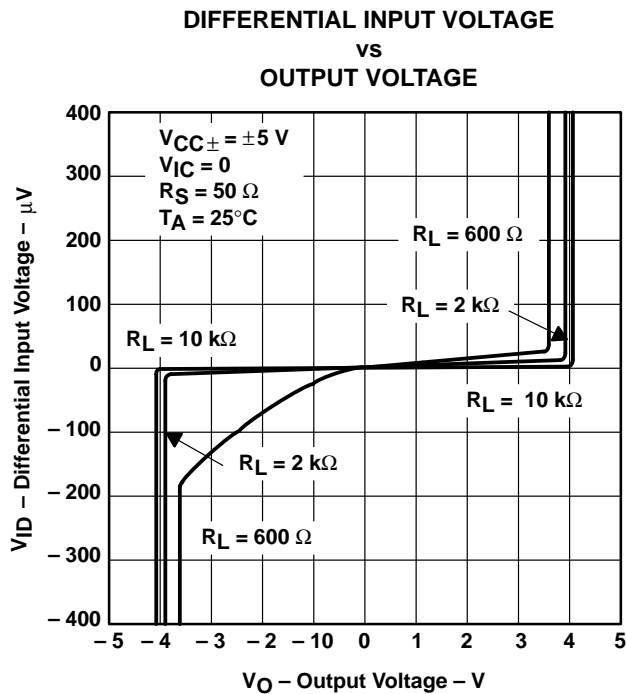
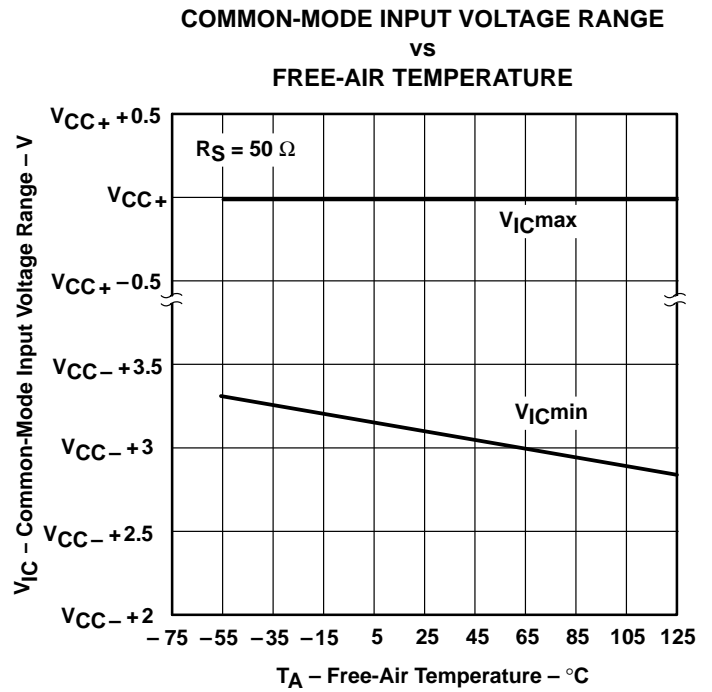
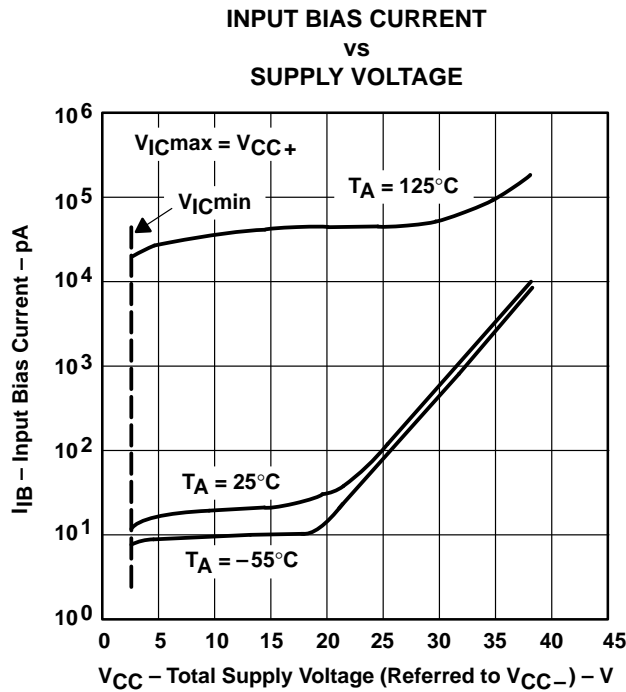
Figure 9

† Data at high and low temperatures are applicable only within the rated operating free-air temperature ranges of the various devices.

**TLE2072, TLE2072A, TLE2072Y**  
**EXCALIBUR LOW-NOISE HIGH-SPEED**  
**JFET-INPUT DUAL OPERATIONAL AMPLIFIERS**

SLOS124A – JUNE 1993 – REVISED AUGUST 1994

**TYPICAL CHARACTERISTICS†**



† Data at high and low temperatures are applicable only within the rated operating free-air temperature ranges of the various devices.



TYPICAL CHARACTERISTICS†

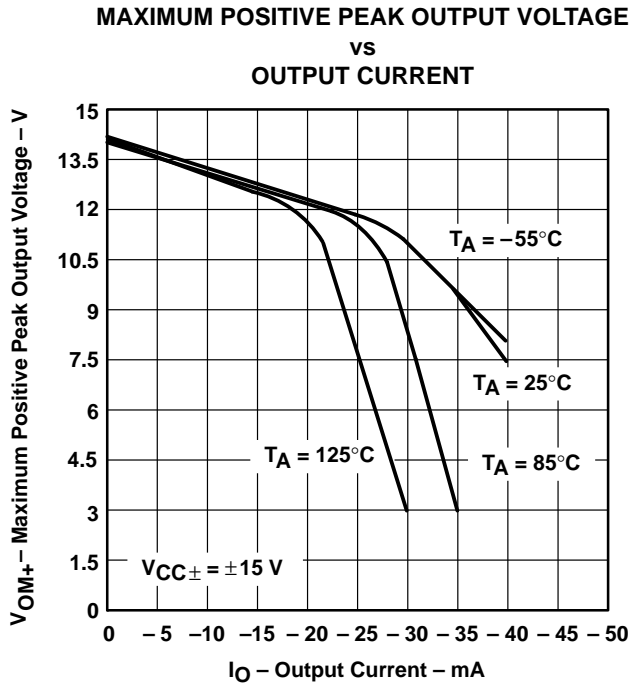


Figure 14

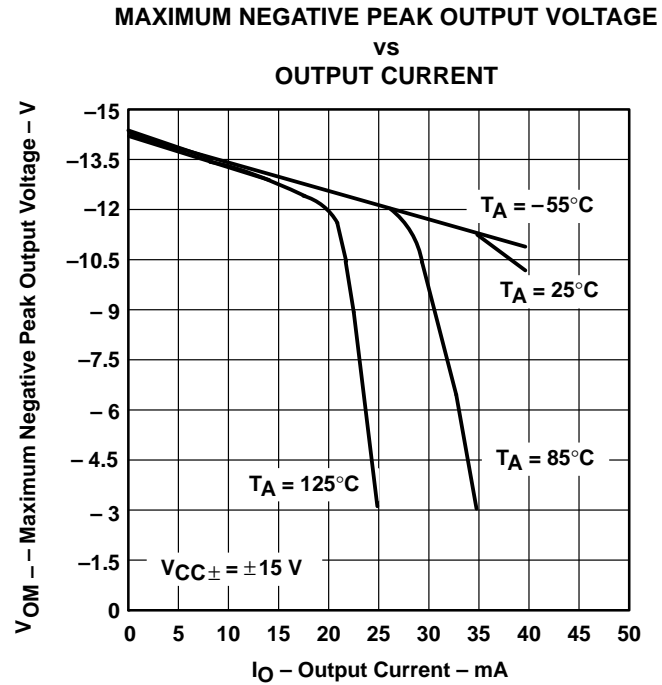


Figure 15

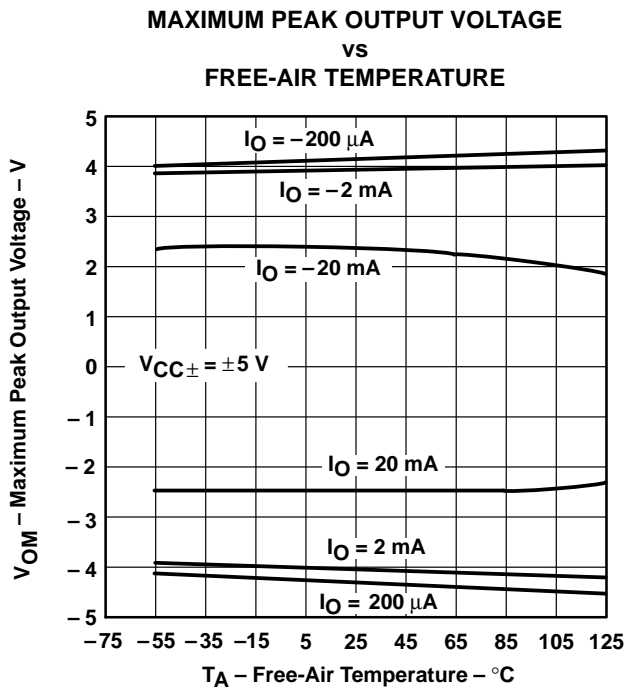


Figure 16

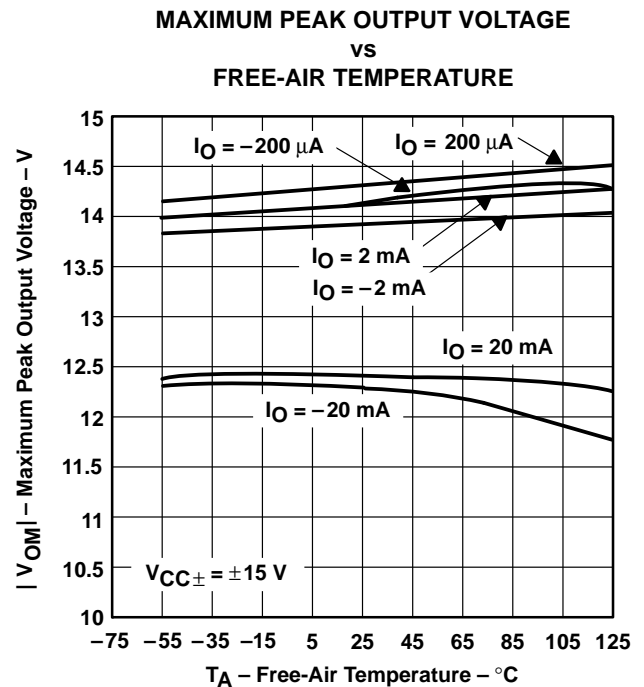


Figure 17

† Data at high and low temperatures are applicable only within the rated operating free-air temperature ranges of the various devices.

TYPICAL CHARACTERISTICS†

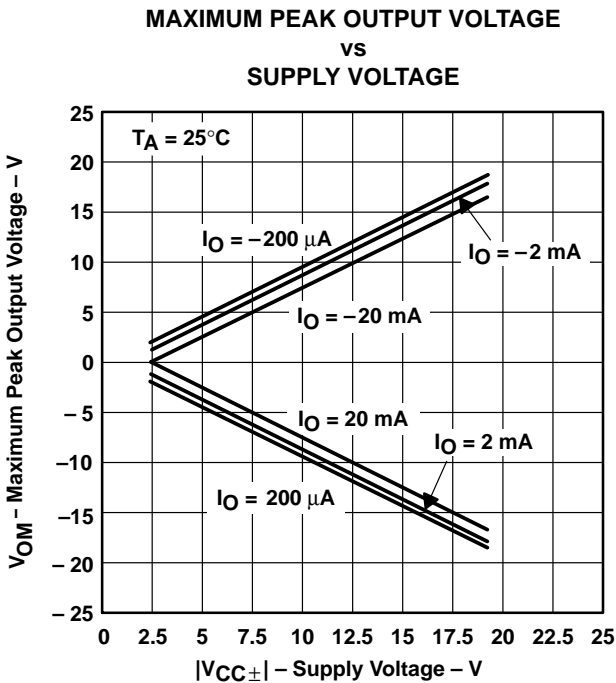


Figure 18

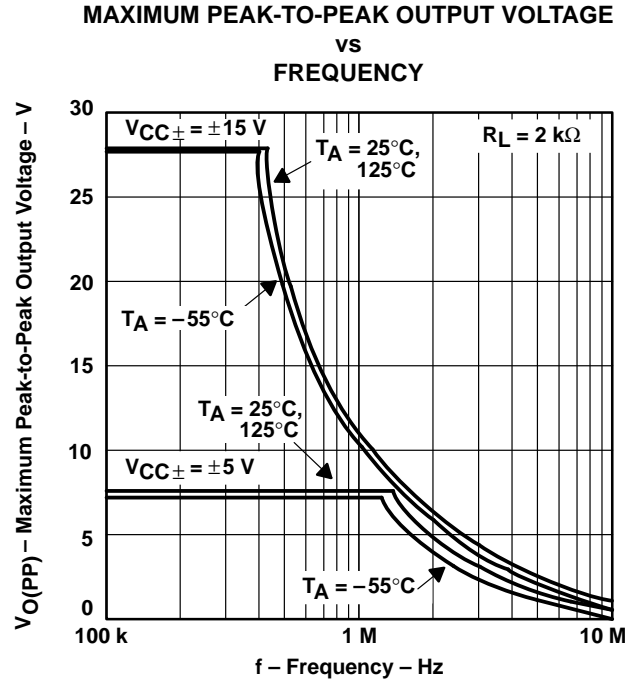


Figure 19

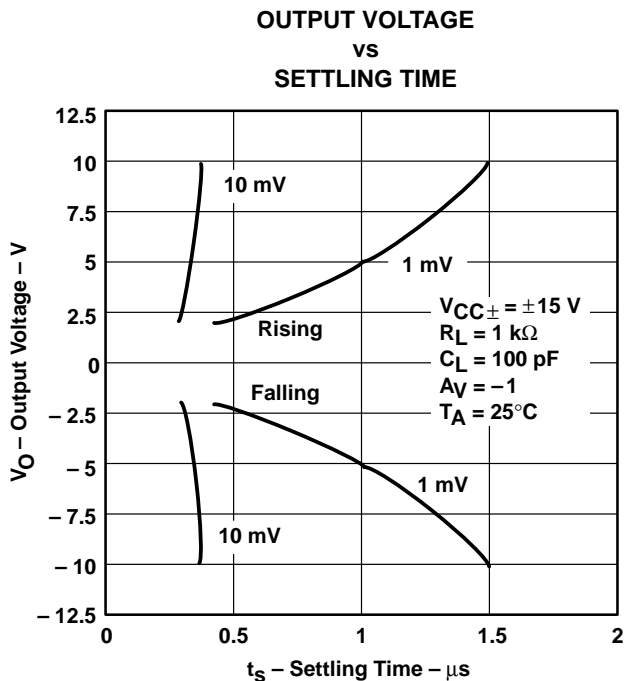


Figure 20

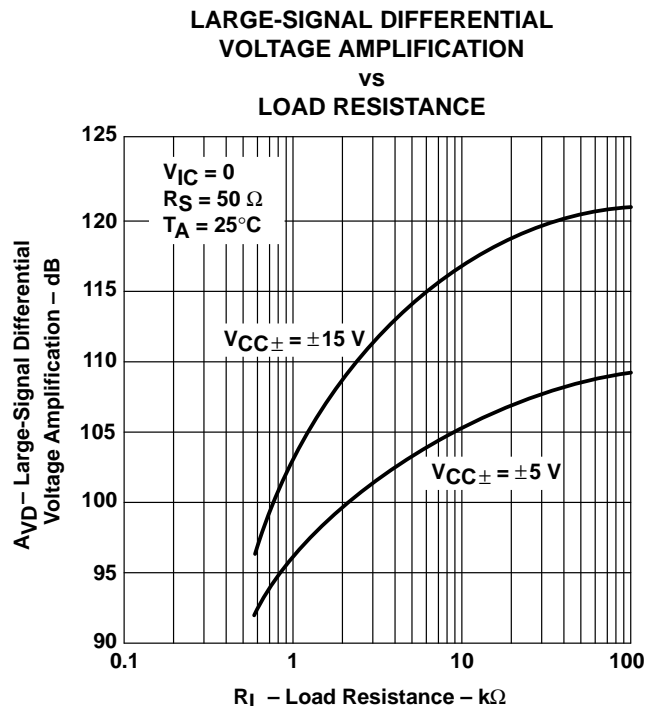


Figure 21

† Data at high and low temperatures are applicable only within the rated operating free-air temperature ranges of the various devices.



TYPICAL CHARACTERISTICS†

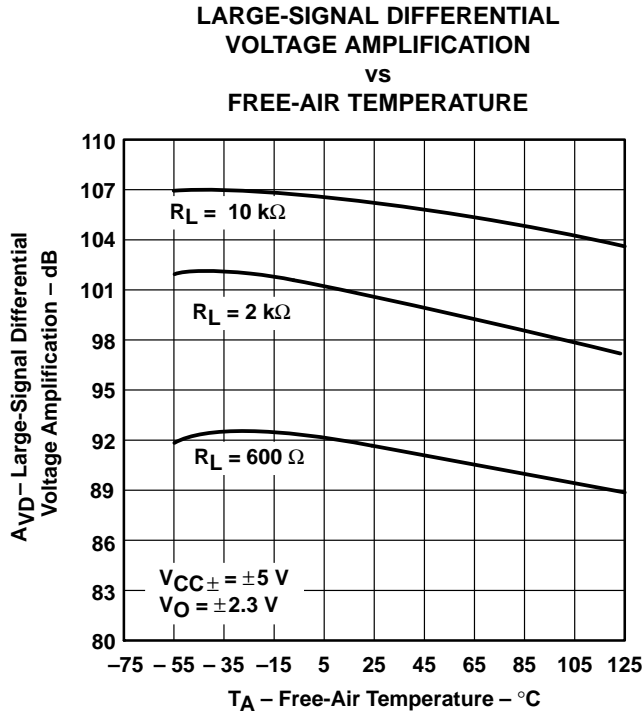


Figure 22

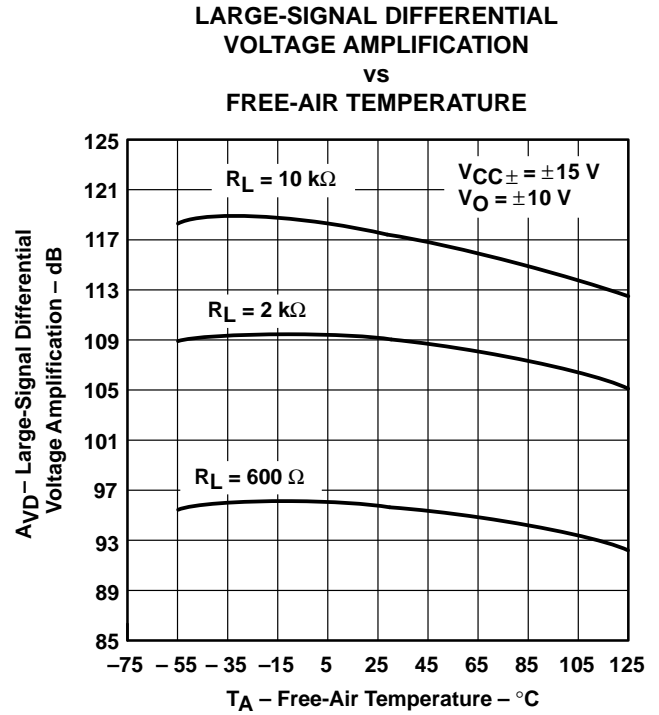


Figure 23

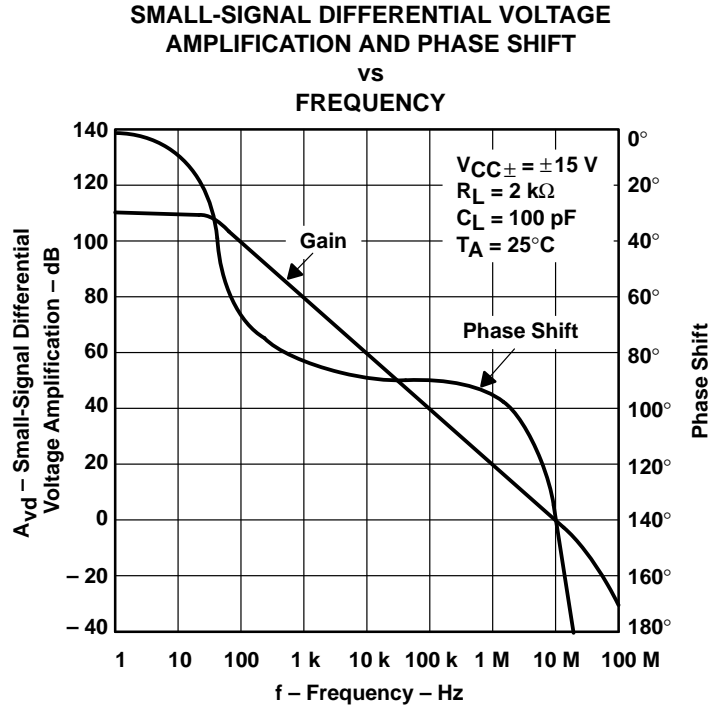


Figure 24

† Data at high and low temperatures are applicable only within the rated operating free-air temperature ranges of the various devices.

**TLE2072, TLE2072A, TLE2072Y**  
**EXCALIBUR LOW-NOISE HIGH-SPEED**  
**JFET-INPUT DUAL OPERATIONAL AMPLIFIERS**

SLOS124A – JUNE 1993 – REVISED AUGUST 1994

**TYPICAL CHARACTERISTICS†**

**SMALL-SIGNAL DIFFERENTIAL VOLTAGE**  
**AMPLIFICATION AND PHASE SHIFT**

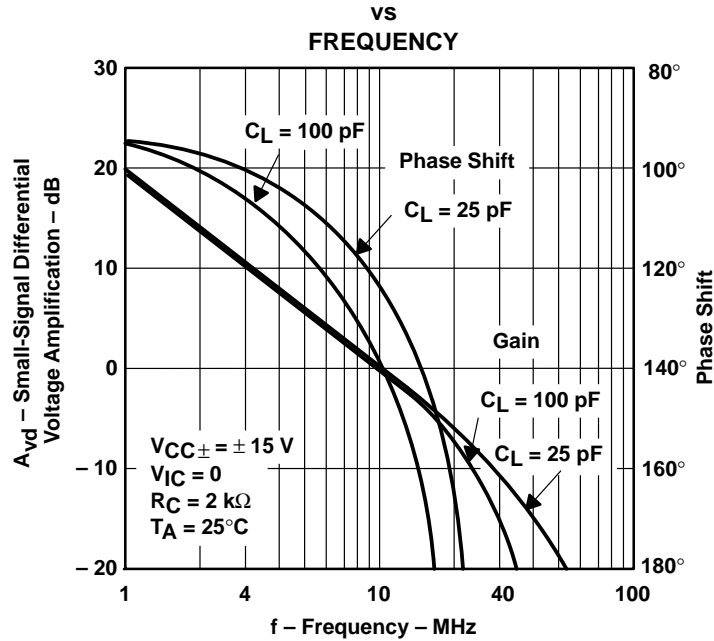


Figure 25

**COMMON-MODE REJECTION RATIO**  
vs  
**FREQUENCY**

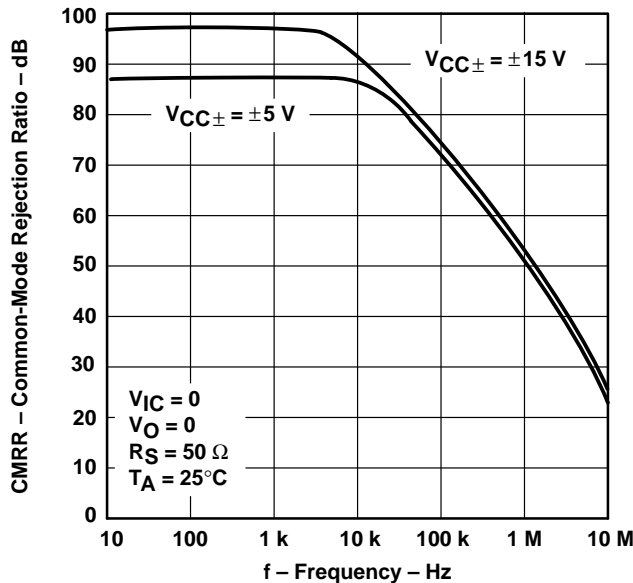


Figure 26

**COMMON-MODE REJECTION RATIO**  
vs  
**FREE-AIR TEMPERATURE**

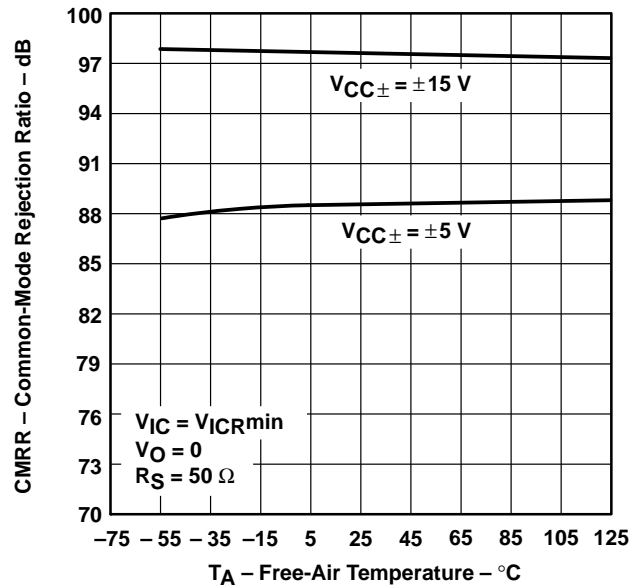


Figure 27

† Data at high and low temperatures are applicable only within the rated operating free-air temperature ranges of the various devices.



TYPICAL CHARACTERISTICS†

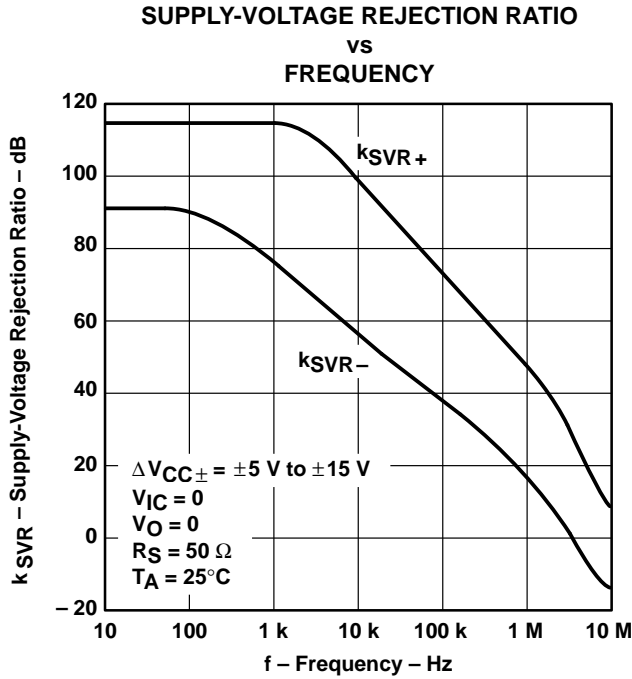


Figure 28

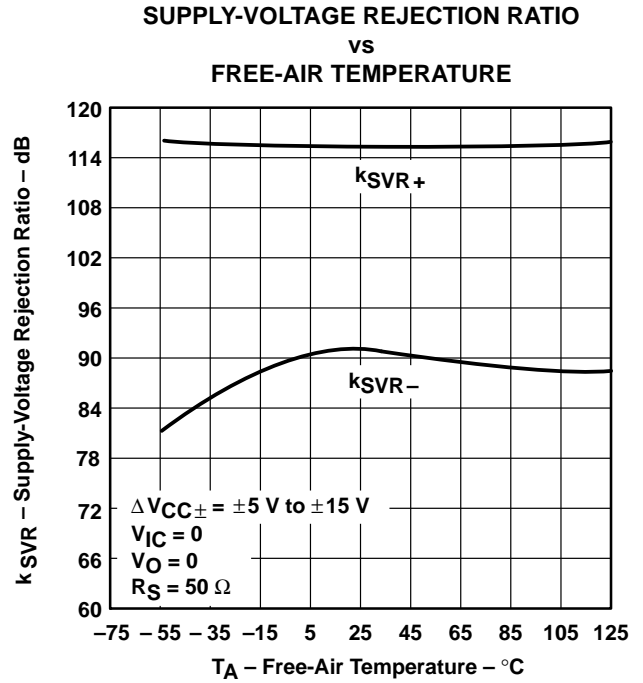


Figure 29

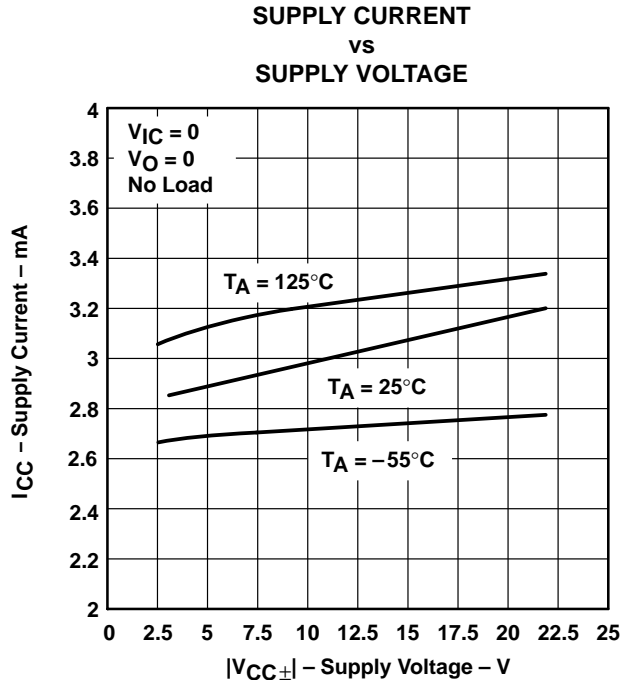


Figure 30

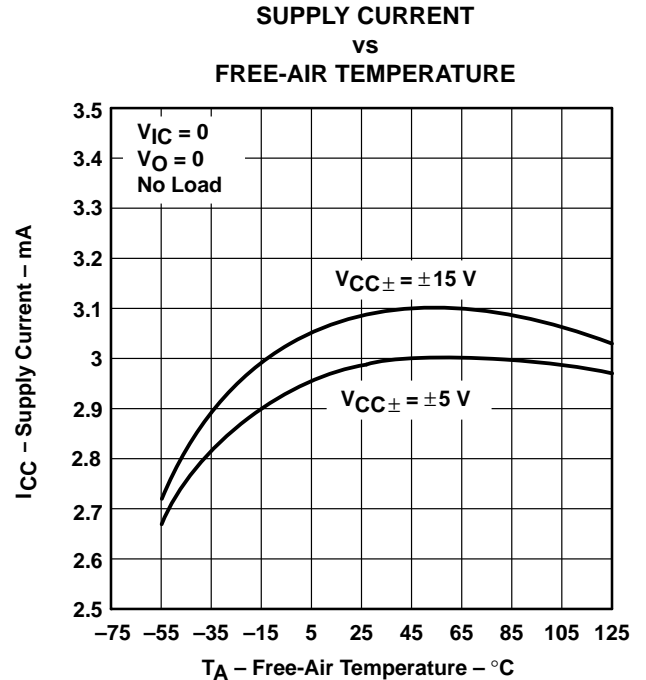


Figure 31

† Data at high and low temperatures are applicable only within the rated operating free-air temperature ranges of the various devices.

**TLE2072, TLE2072A, TLE2072Y**  
**EXCALIBUR LOW-NOISE HIGH-SPEED**  
**JFET-INPUT DUAL OPERATIONAL AMPLIFIERS**

SLOS124A – JUNE 1993 – REVISED AUGUST 1994

**TYPICAL CHARACTERISTICS†**

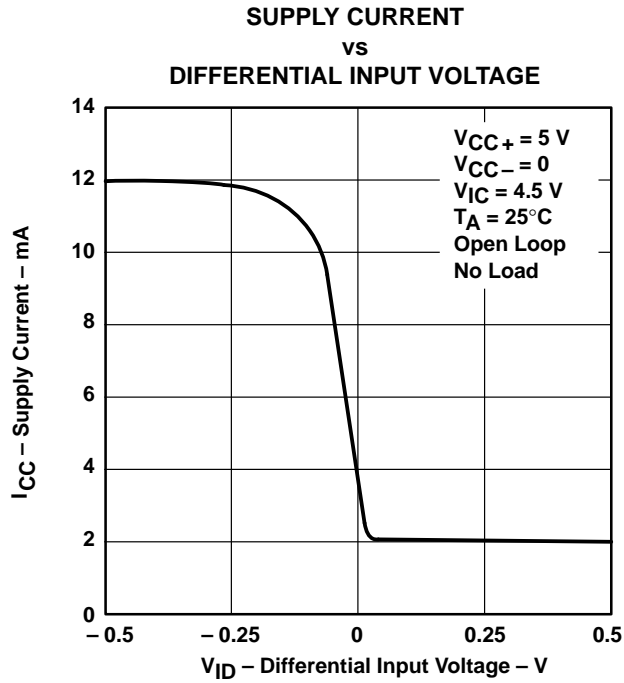


Figure 32

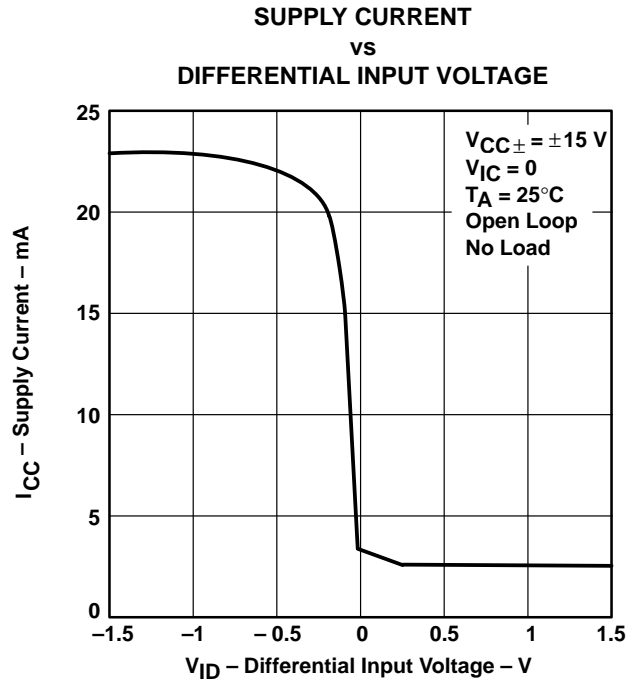


Figure 33

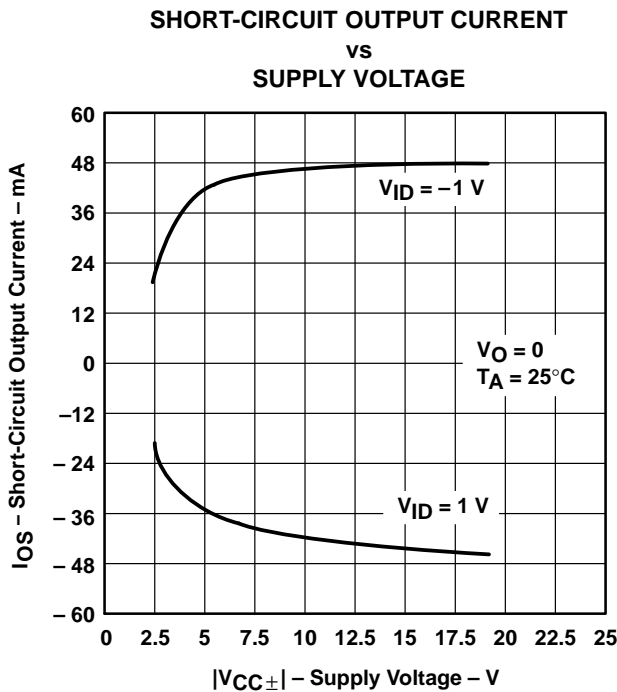


Figure 34

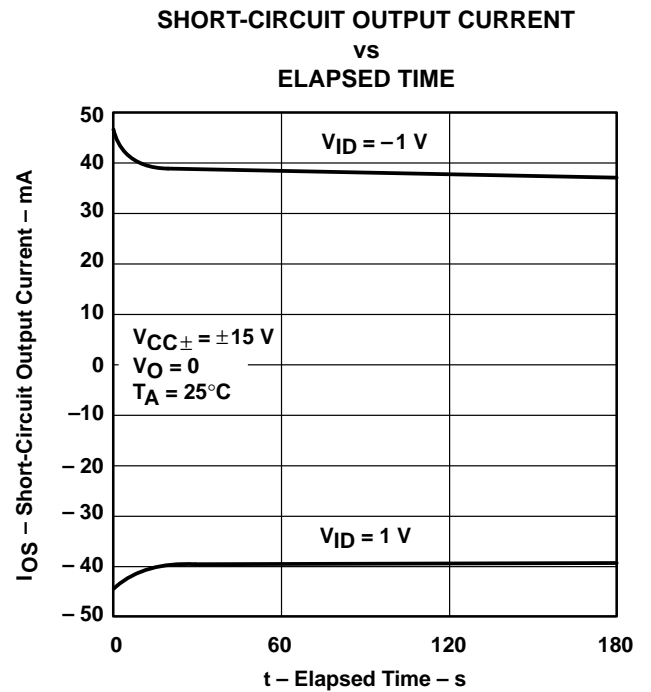


Figure 35

† Data at high and low temperatures are applicable only within the rated operating free-air temperature ranges of the various devices.

TYPICAL CHARACTERISTICS†

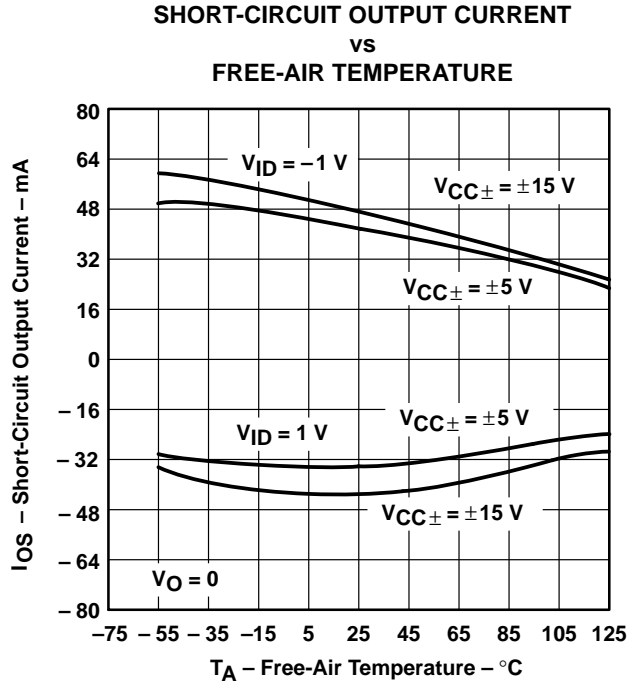


Figure 36

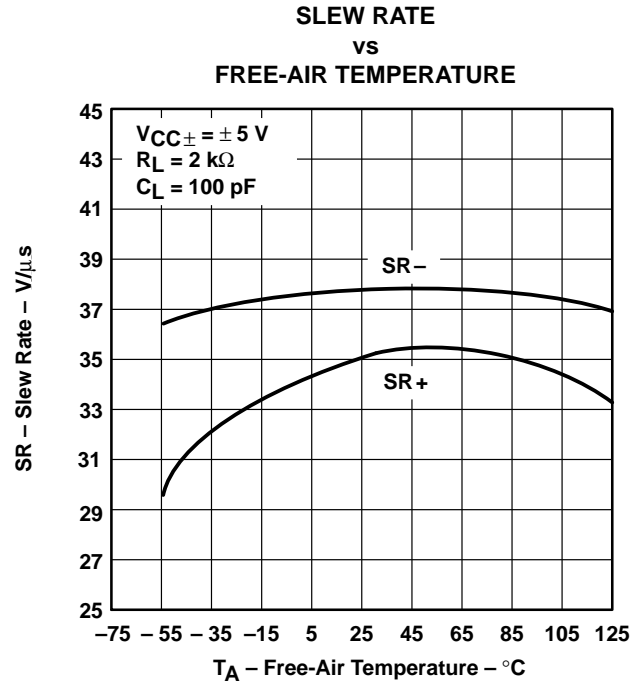


Figure 37

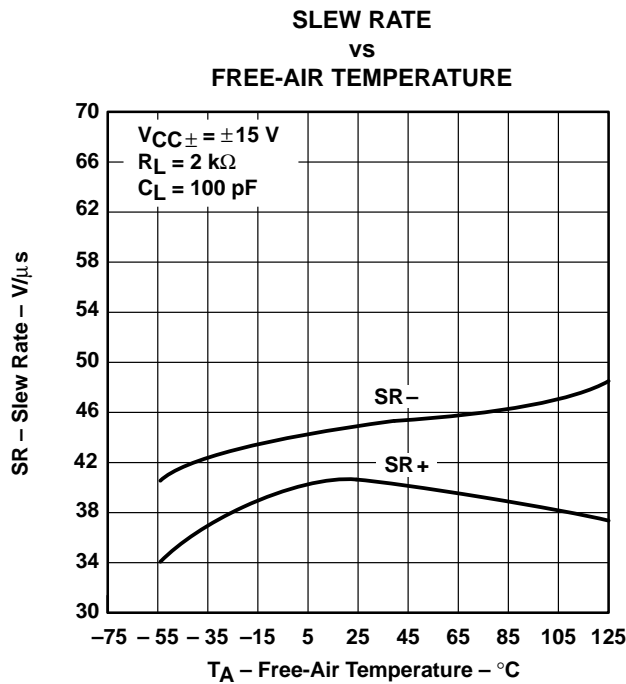


Figure 38

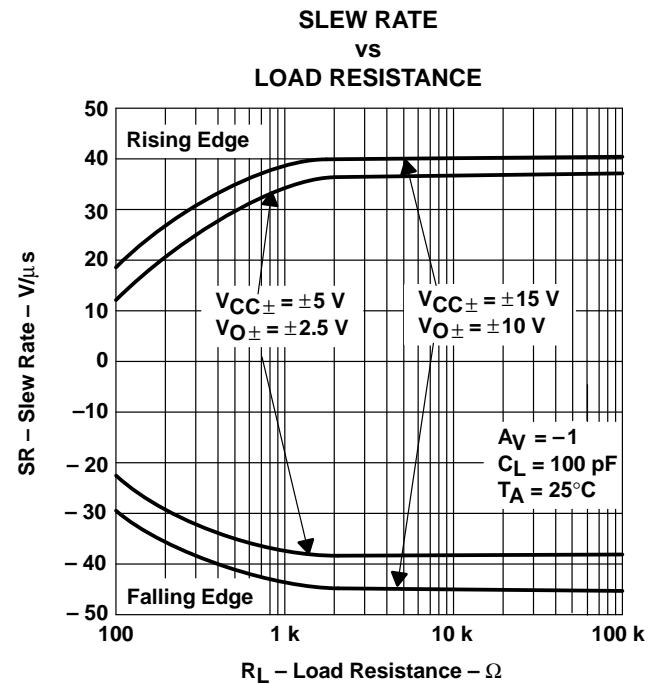


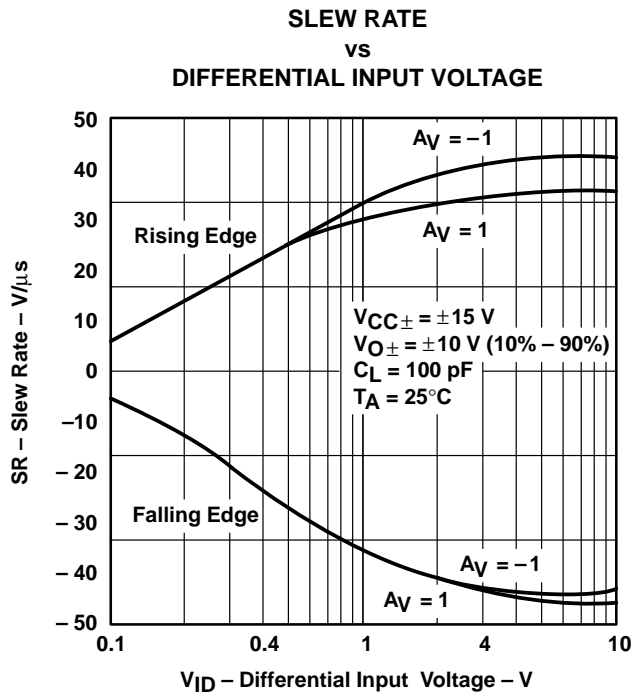
Figure 39

† Data at high and low temperatures are applicable only within the rated operating free-air temperature ranges of the various devices.

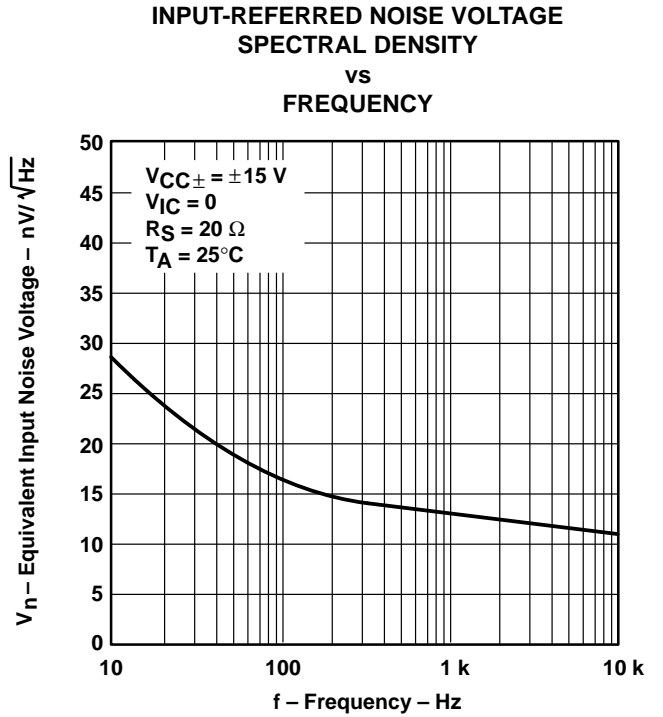
**TLE2072, TLE2072A, TLE2072Y**  
**EXCALIBUR LOW-NOISE HIGH-SPEED**  
**JFET-INPUT DUAL OPERATIONAL AMPLIFIERS**

SLOS124A – JUNE 1993 – REVISED AUGUST 1994

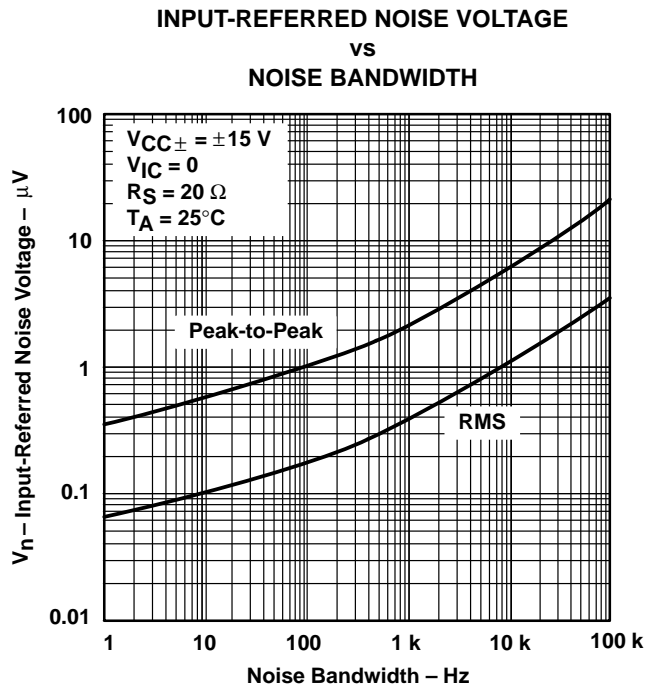
**TYPICAL CHARACTERISTICS†**



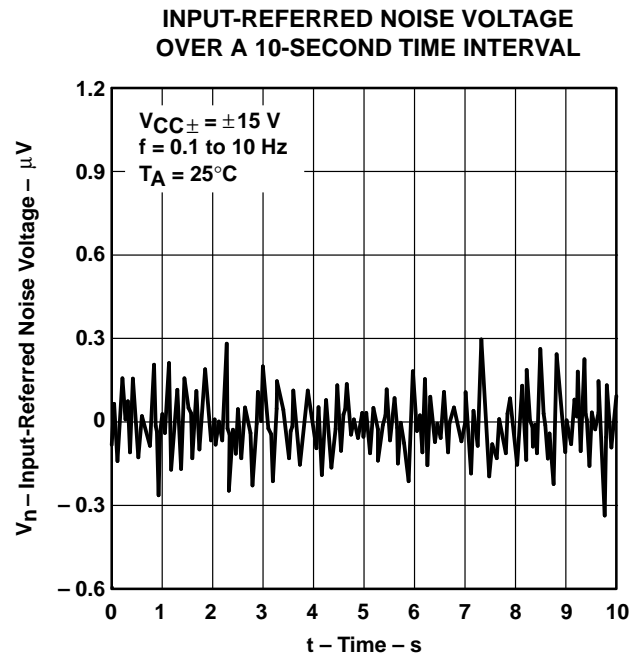
**Figure 40**



**Figure 41**



**Figure 42**



**Figure 43**

† Data at high and low temperatures are applicable only within the rated operating free-air temperature ranges of the various devices.

TYPICAL CHARACTERISTICS

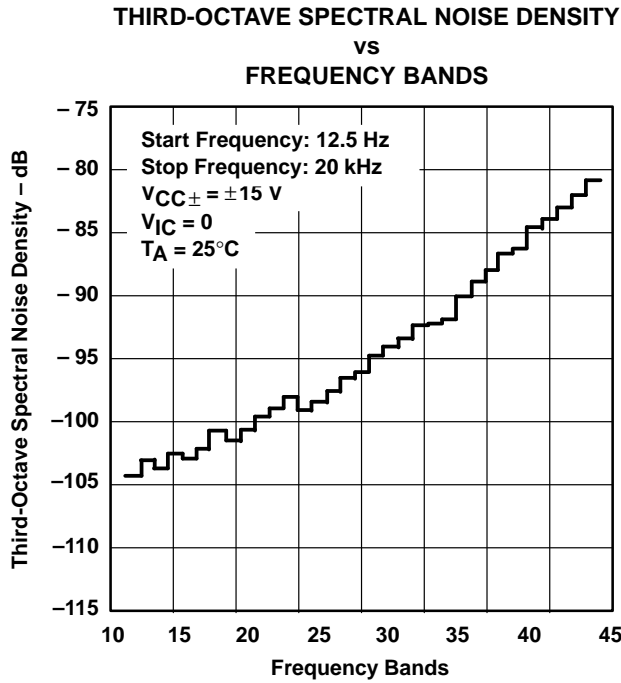


Figure 44

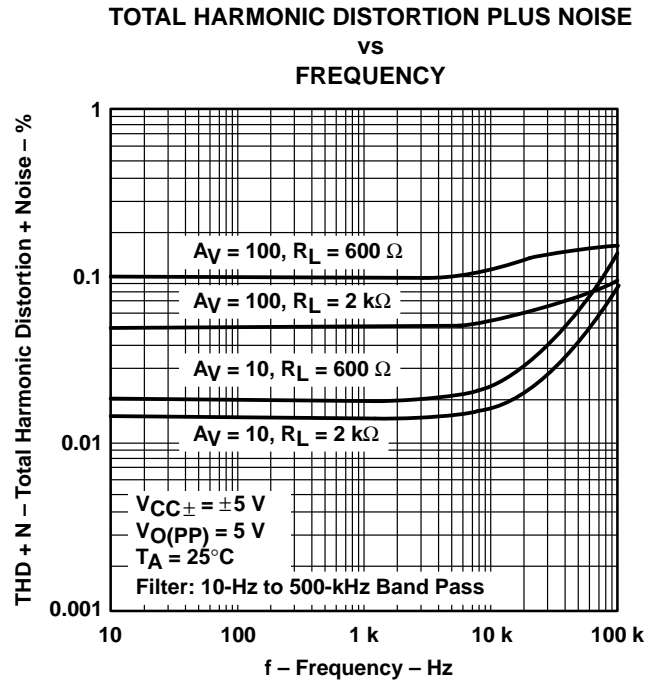


Figure 45

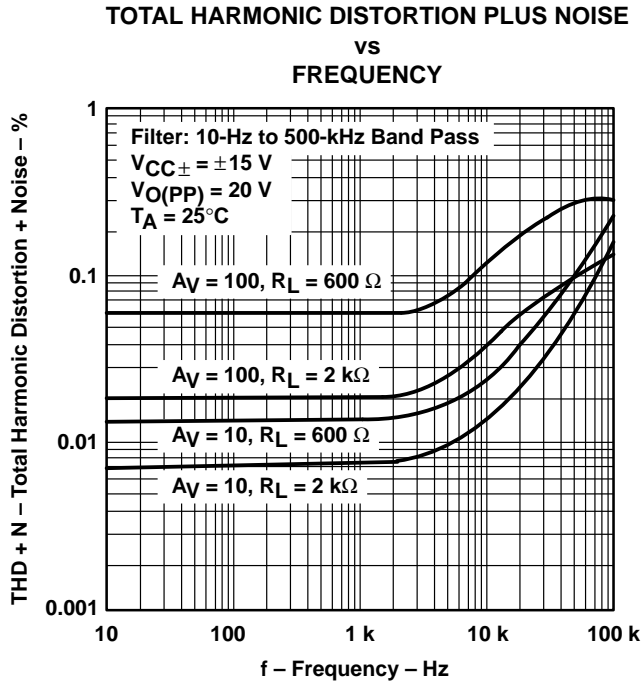


Figure 46

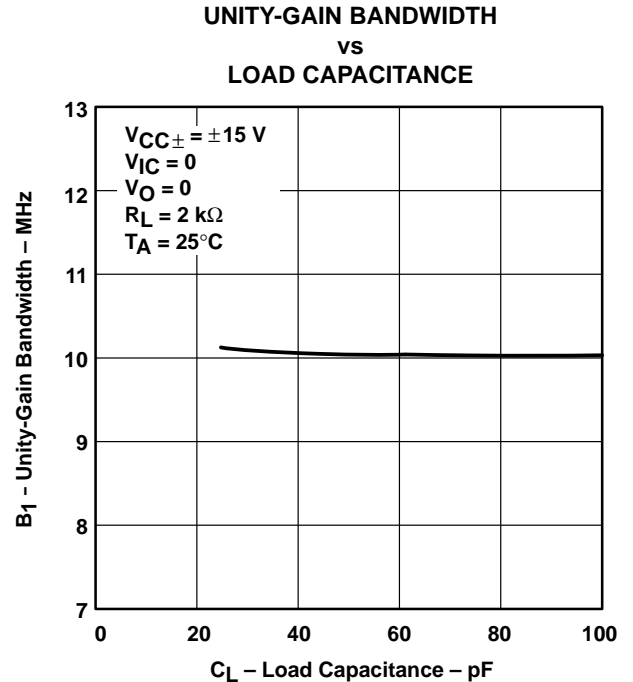
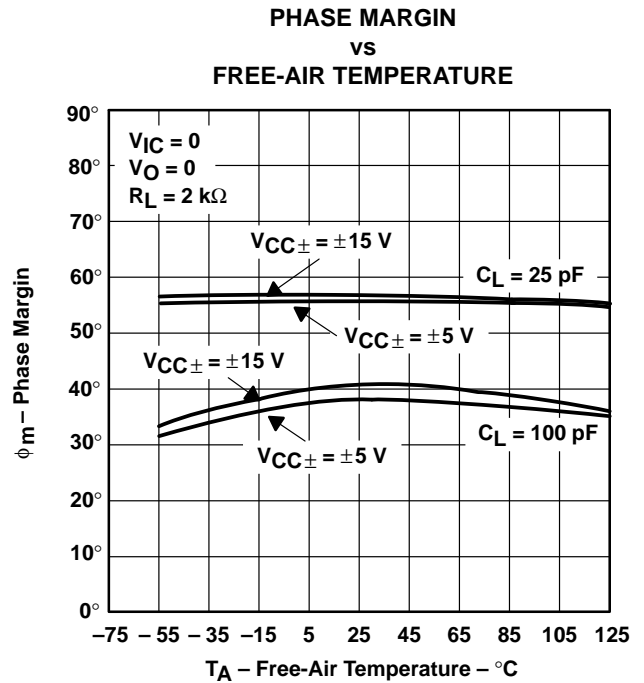
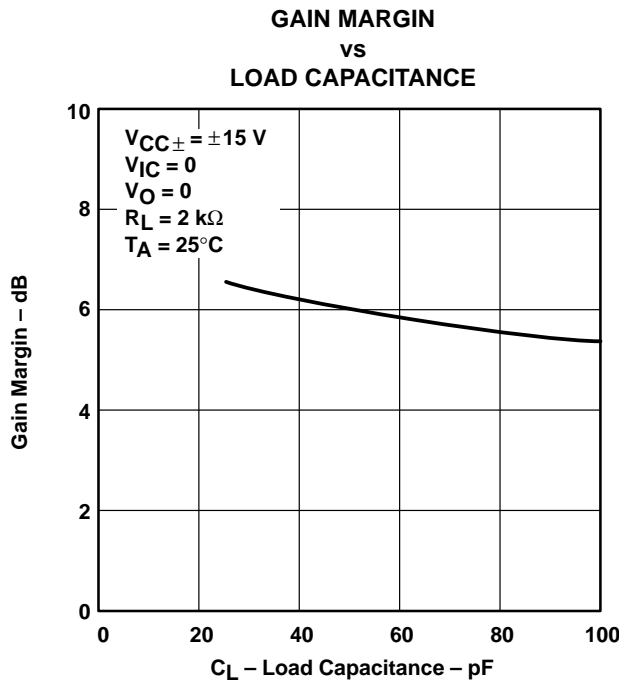
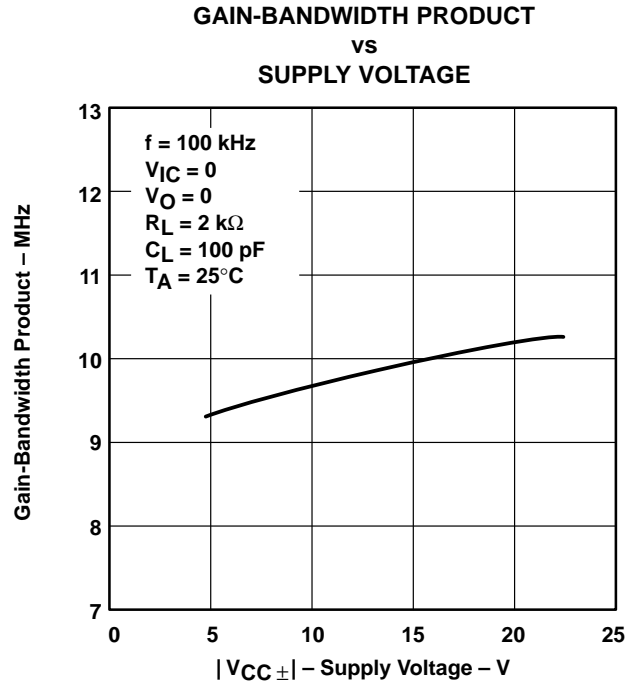
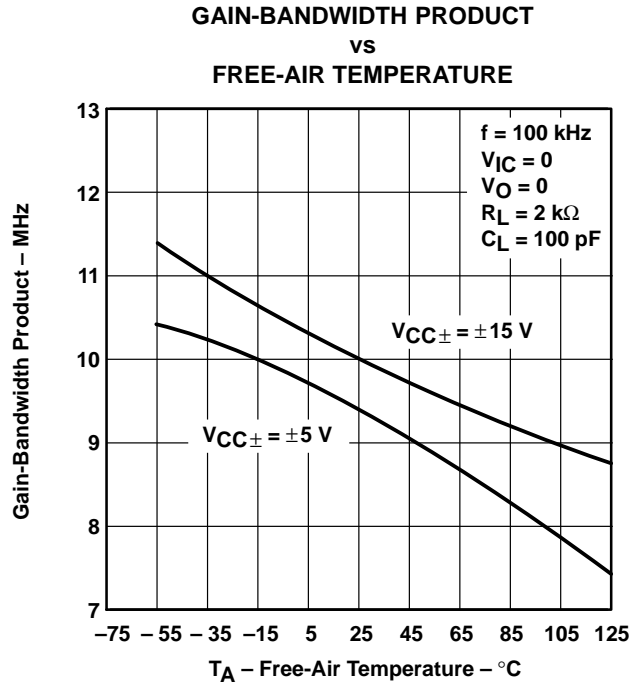


Figure 47

**TLE2072, TLE2072A, TLE2072Y**  
**EXCALIBUR LOW-NOISE HIGH-SPEED**  
**JFET-INPUT DUAL OPERATIONAL AMPLIFIERS**

SLOS124A – JUNE 1993 – REVISED AUGUST 1994

**TYPICAL CHARACTERISTICS†**

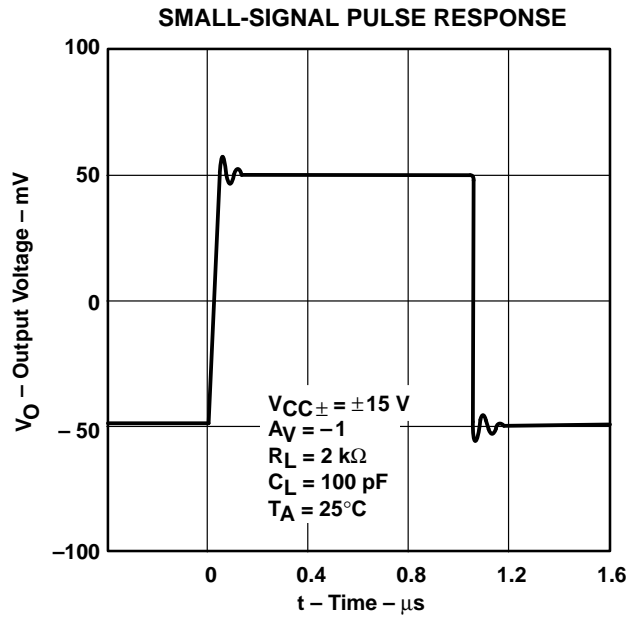
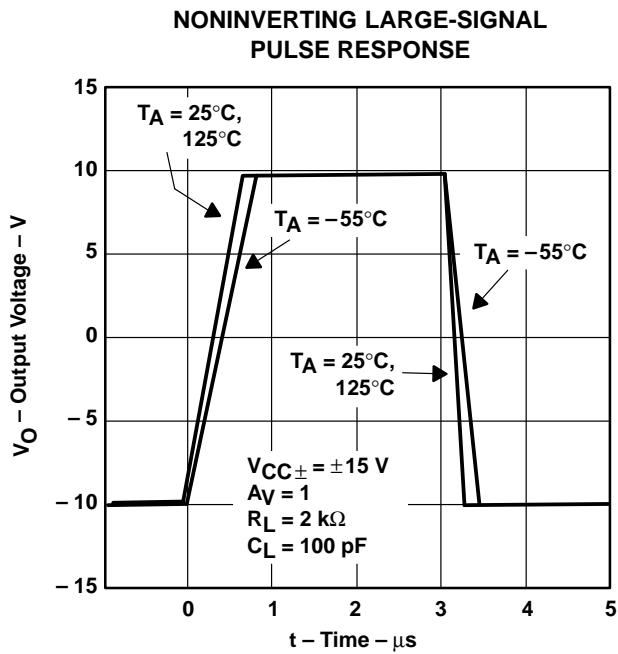
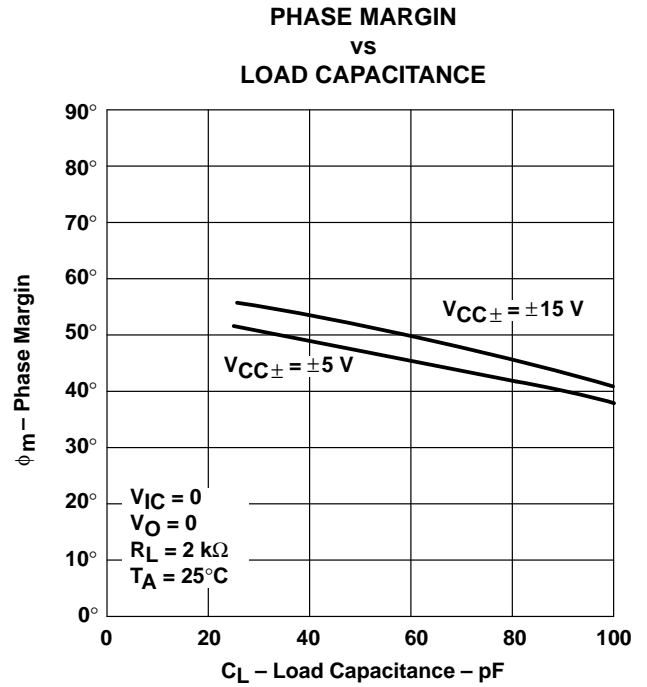
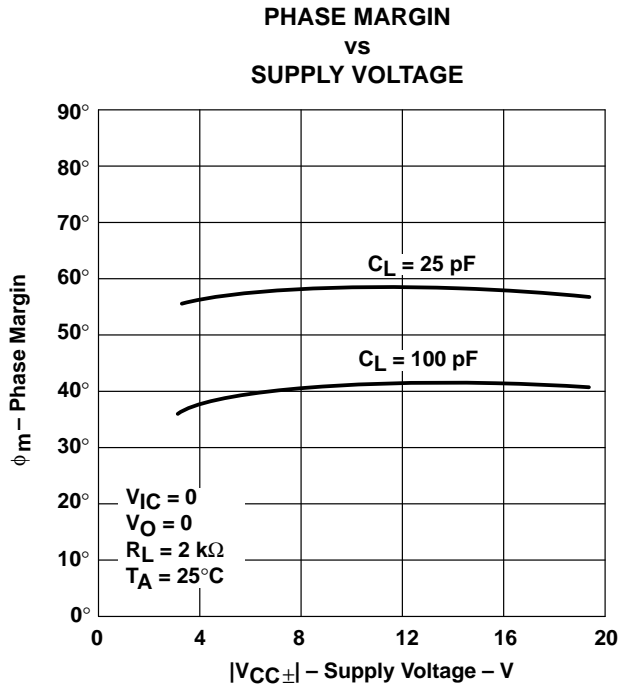


† Data at high and low temperatures are applicable only within the rated operating free-air temperature ranges of the various devices.





TYPICAL CHARACTERISTICS†

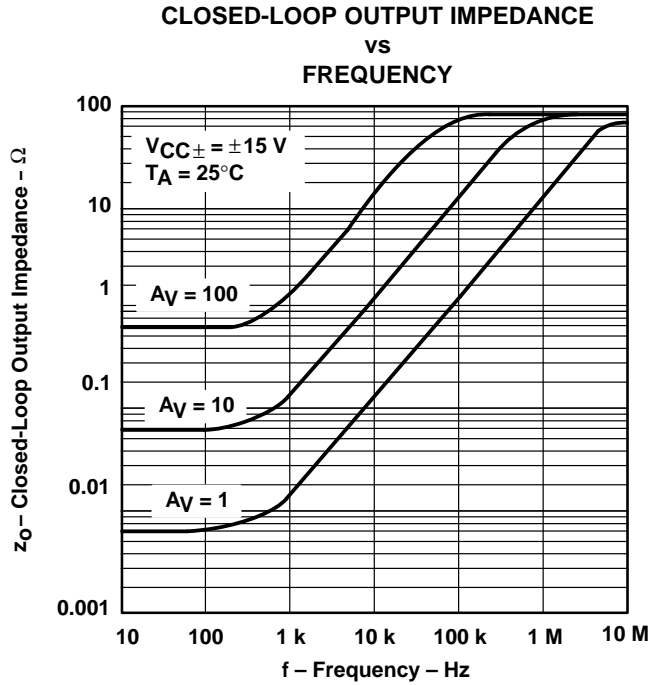


† Data at high and low temperatures are applicable only within the rated operating free-air temperature ranges of the various devices.

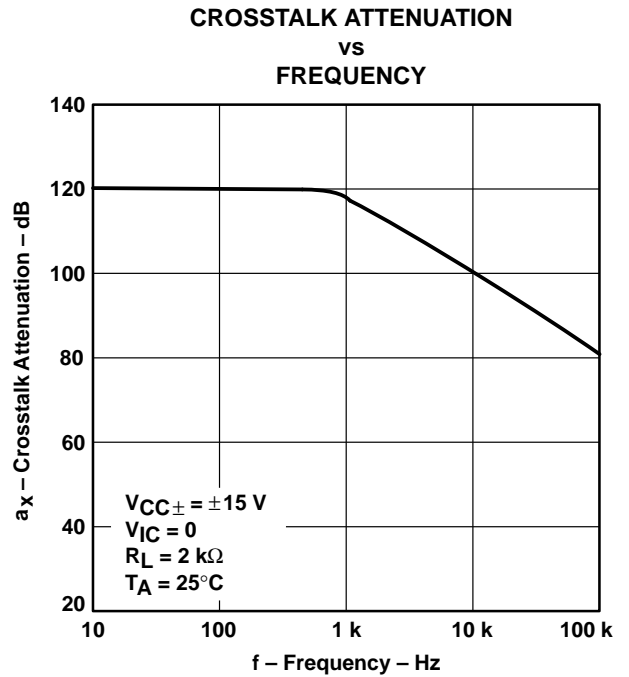
**TLE2072, TLE2072A, TLE2072Y**  
**EXCALIBUR LOW-NOISE HIGH-SPEED**  
**JFET-INPUT DUAL OPERATIONAL AMPLIFIERS**

SLOS124A – JUNE 1993 – REVISED AUGUST 1994

**TYPICAL CHARACTERISTICS†**



**Figure 56**



**Figure 57**

† Data at high and low temperatures are applicable only within the rated operating free-air temperature ranges of the various devices.

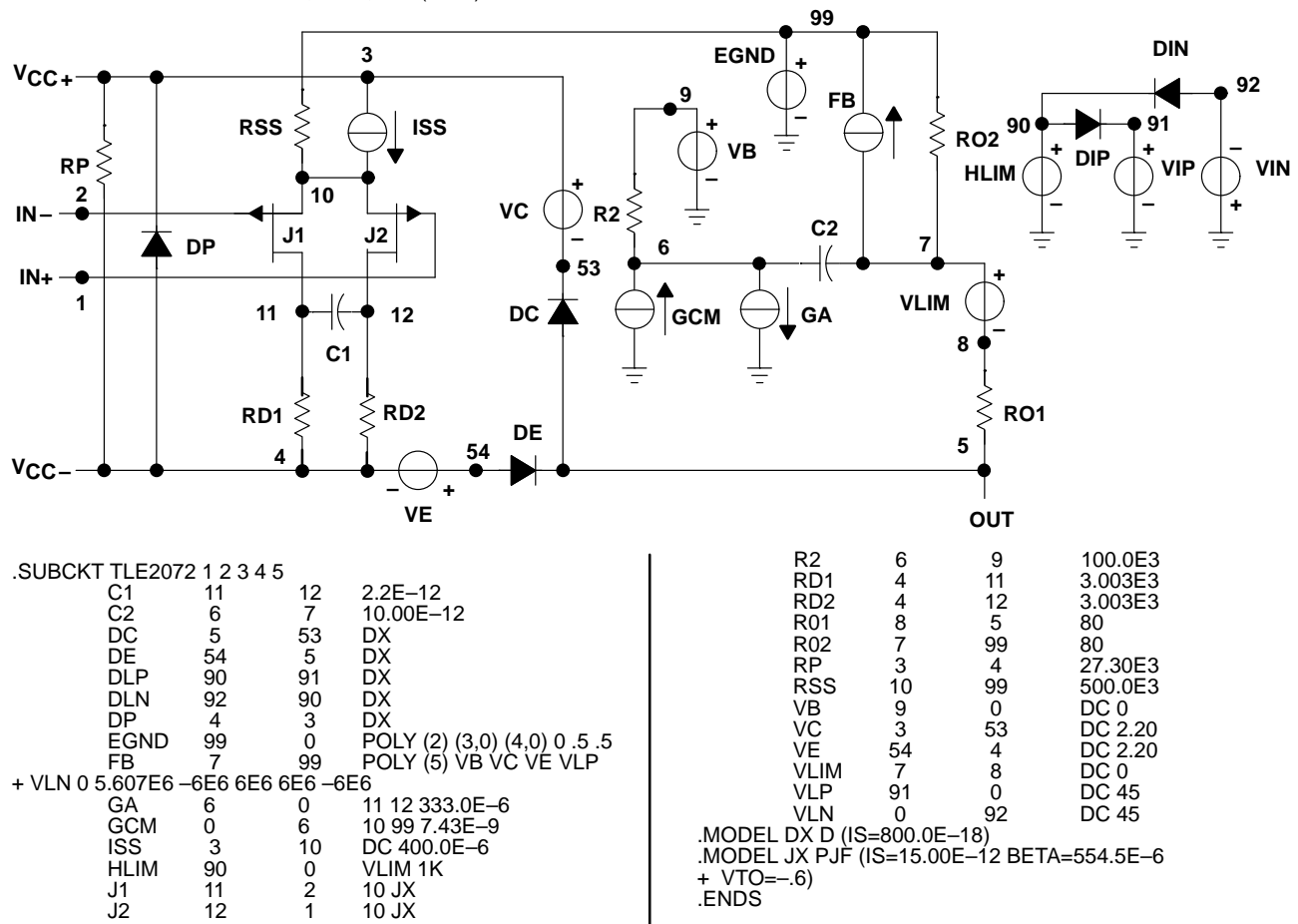
## APPLICATION INFORMATION

### macromodel information

Macromodel information provided was derived using *PSpice™ Parts™* model generation software. The Boyle macromodel (see Note 4) and subcircuit in Figure 58 were generated using the TLE2072 typical electrical and operating characteristics at  $T_A = 25^\circ\text{C}$ . Using this information, output simulations of the following key parameters can be generated to a tolerance of 20% (in most cases):

- Maximum positive output voltage swing
- Maximum negative output voltage swing
- Slew rate
- Quiescent power dissipation
- Input bias current
- Open-loop voltage amplification
- Unity-gain frequency
- Common-mode rejection ratio
- Phase margin
- DC output resistance
- AC output resistance
- Short-circuit output current limit

NOTE 4: G.R. Boyle, B.M. Cohn, D. O. Pederson, and J. E. Solomon, "Macromodeling of Integrated Circuit Operational Amplifiers", *IEEE Journal of Solid-State Circuits*, SC-9, 353 (1974).



**Figure 58. Boyle Macromodel and Subcircuit**

*PSpice* and *Parts* are trademarks of MicroSim Corporation.



## **IMPORTANT NOTICE**

Texas Instruments (TI) reserves the right to make changes to its products or to discontinue any semiconductor product or service without notice, and advises its customers to obtain the latest version of relevant information to verify, before placing orders, that the information being relied on is current.

TI warrants performance of its semiconductor products and related software to the specifications applicable at the time of sale in accordance with TI's standard warranty. Testing and other quality control techniques are utilized to the extent TI deems necessary to support this warranty. Specific testing of all parameters of each device is not necessarily performed, except those mandated by government requirements.

Certain applications using semiconductor products may involve potential risks of death, personal injury, or severe property or environmental damage ("Critical Applications").

**TI SEMICONDUCTOR PRODUCTS ARE NOT DESIGNED, INTENDED, AUTHORIZED, OR WARRANTED TO BE SUITABLE FOR USE IN LIFE-SUPPORT APPLICATIONS, DEVICES OR SYSTEMS OR OTHER CRITICAL APPLICATIONS.**

Inclusion of TI products in such applications is understood to be fully at the risk of the customer. Use of TI products in such applications requires the written approval of an appropriate TI officer. Questions concerning potential risk applications should be directed to TI through a local SC sales office.

In order to minimize risks associated with the customer's applications, adequate design and operating safeguards should be provided by the customer to minimize inherent or procedural hazards.

TI assumes no liability for applications assistance, customer product design, software performance, or infringement of patents or services described herein. Nor does TI warrant or represent that any license, either express or implied, is granted under any patent right, copyright, mask work right, or other intellectual property right of TI covering or relating to any combination, machine, or process in which such semiconductor products or services might be or are used.