

2-520264-2 Product Details

[Share](#) [Print](#) [Email](#)




2-520264-2

TE Internal Number: 2-520264-2

 Active

[View 3D PDF](#)

Ultra-Fast Receptacles & Tabs

 Always EU RoHS/ELV Compliant
(Statement of Compliance)

Product Highlights:

- Terminal Type = Receptacle
- Proprietary Name = Ultra-Fast
- Receptacle Style = Straight
- Mating Area Interface Dimensions = 6.35 x 0.81 mm
- Brass Material

[View all Features](#)

Quick Links

- ▶ [Pricing & Availability](#)
- ▶ [Search for Tooling](#)
- ▶ [Product Feature Selector](#)
- ▶ [Contact Us About This Product](#)

[Add to My Part List](#)

[Request Sample](#)

[Find Similar Products](#)

[Buy Product](#)

Documentation & Additional Information

Product Drawings:

- [RECEPTACLE ASSY,ULTRA-FAST, LOOSE PIECE,..250 SERIES,..](#) (PDF, English)

Catalog Pages/Data Sheets:

- [Ultra-Fast and Ultra Fast Plus](#) (PDF, English)

Product Specifications:

- [Ultra-Fast Fully Insulated FASTON Receptacle Terminals](#) (PDF, English)

Application Specifications:

- None Available

Instruction Sheets:

- None Available

CAD Files: (CAD Format & Compression Information)

- [2D Drawing](#) (DXF, Version L)
- [3D Model](#) (IGES, Version L)
- [3D Model](#) (STEP, Version L)

[List all Documents](#)

Additional Information:

- [Product Line Information](#)

Related Products:

- [Tooling](#)

Product Features (Please use the Product Drawing for all design activity)

Product Type Features:

- Terminal Type = Receptacle
- Receptacle Style = Straight
- Insulation Support = Non-Insulation Support
- Finish = Tin

Dimensions:

- Mating Area Interface Dimensions (mm [in]) = 6.35 x 0.81 [.250 x .032]
- Insulation Diameter (mm [in]) = 5.84 [.230] Max.

Body Features:

- Material = Brass
- Wire Range (mm [AWG]) = 0.30-0.90² [22-18]
- Fully Insulated = Yes

Housing Features:

- UL Flammability Rating = UL 94V-2

Industry Standards:

- [RoHS/ELV Compliance](#) = RoHS compliant, ELV compliant
- [Lead Free Solder Processes](#) = Not relevant for lead free process
- [RoHS/ELV Compliance History](#) = Always was RoHS compliant

Packaging Features:

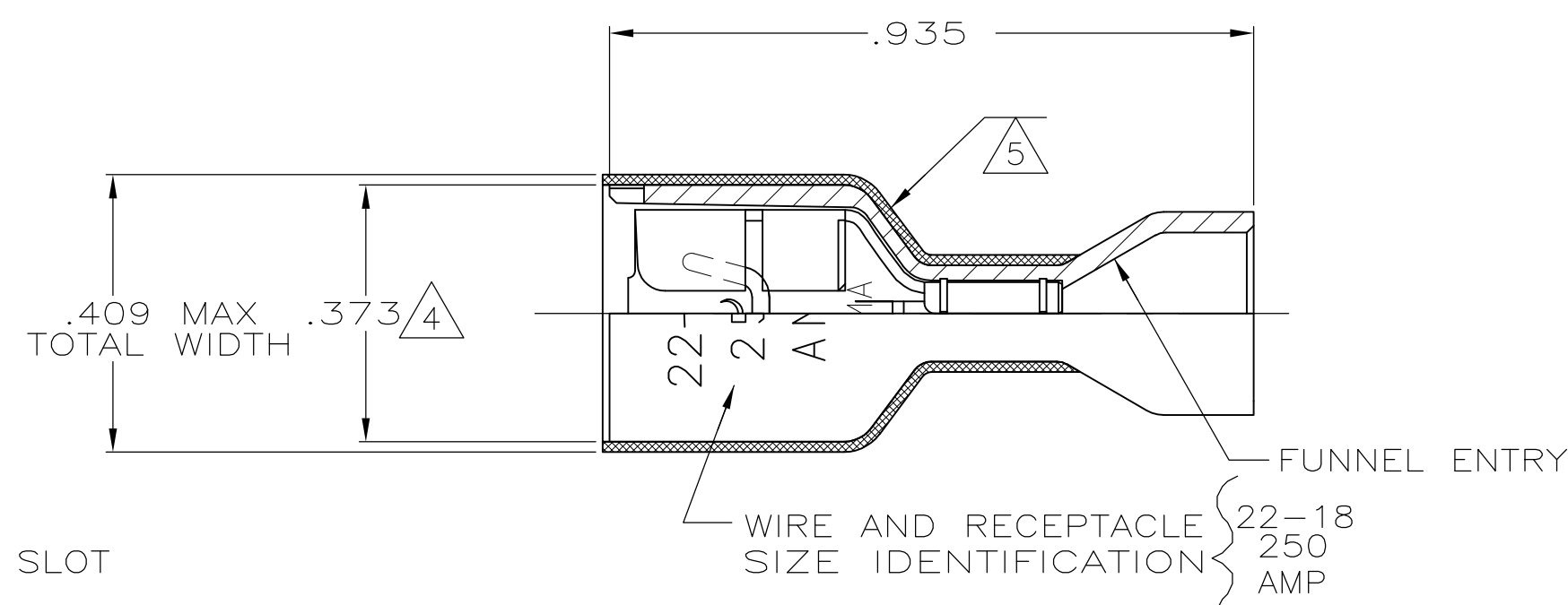
- [Packaging Method](#) = Loose Piece

Other:

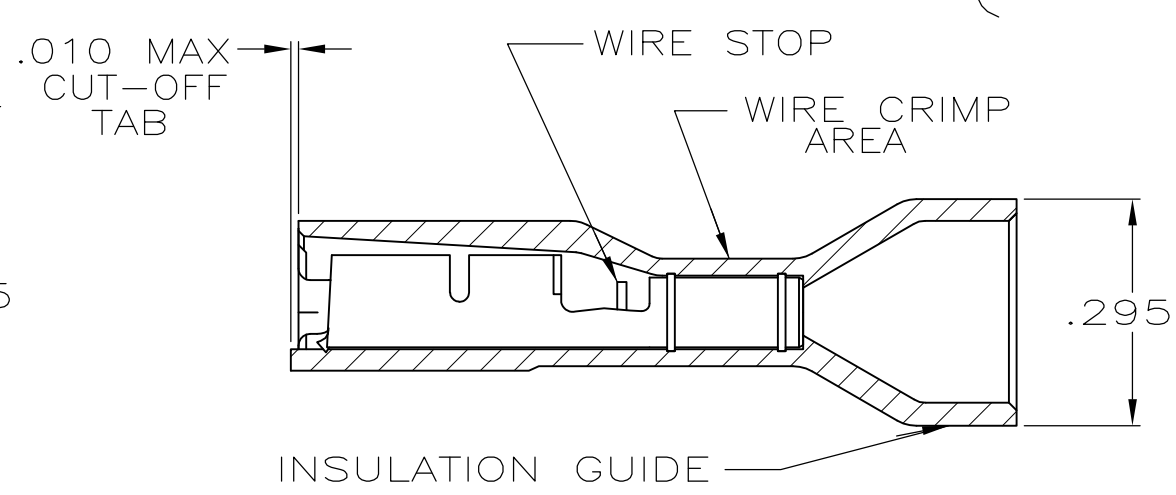
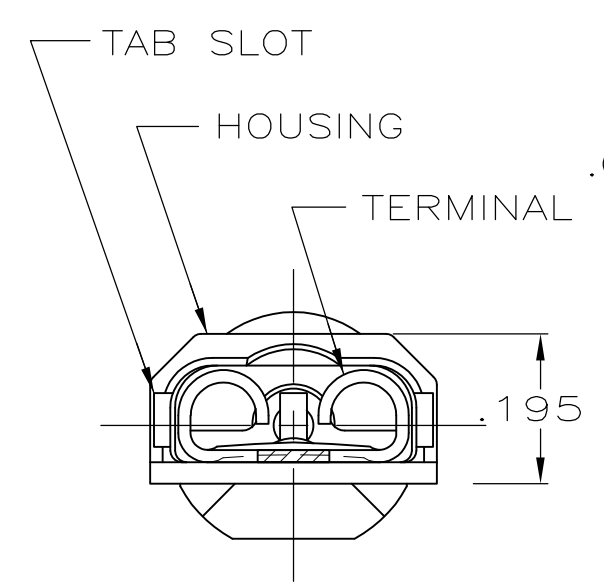
- [Proprietary Name](#) = Ultra-Fast
- Brand = AMP

THIS DRAWING IS UNPUBLISHED. RELEASED FOR PUBLICATION
 © COPYRIGHT - By - ALL RIGHTS RESERVED.

LOC	DIST	REVISIONS			
P	LTR	DESCRIPTION	DATE	DWN	APVD
AF	50	N	REVISED PER ECR-13-004343	30JUL13	KH KR



- 1 MATES WITH .032±.001x.250 TAB
- 2 WIRE STRIP LENGTH .281
- 3 INSULATION SIZE .230 MAX DIA
- 4 DIMENSION DOES NOT INCLUDE TRIM BURR
- 5 .015 MAX CARRIER TRIM BURR PER SIDE IS ALLOWABLE IN THE SHADED AREA



OBSOLETE	HOUSING: NYLON, COLOR-RED TRANSLUCENT RECEPTACLE: #3 HARD PH BRONZE, TIN	2-520264-4
	HOUSING: NYLON, COLOR-RED TRANSLUCENT RECEPTACLE: BRASS, TIN	2-520264-2
MATERIAL & FINISH		PART NO

THIS DRAWING IS A CONTROLLED DOCUMENT.		DWN P FORTNEY 9/30/88	STE TE Connectivity		
DIMENSIONS: INCHES		CHK MS FEHER 9/30/88			
TOLERANCES UNLESS OTHERWISE SPECIFIED:		APVD K RANDOLPH 9/30/88	NAME		
0 PLC ± -		PRODUCT SPEC	RECEPTACLE ASSY, ULTRA-FAST, LOOSE PIECE, .250 SERIES, 22-18 AWG		
1 PLC ± -		108-2043	SIZE		
2 PLC ± -		APPLICATION SPEC	CAGE CODE		
3 PLC ± .015		114-2123	DRAWING NO		
4 PLC ± -		WEIGHT	RESTRICTED TO		
ANGLES ± -		-	A3 00779 C-520264		
MATERIAL SEE TABLE		FINISH SEE TABLE		SCALE 4:1	
CUSTOMER DRAWING				SHEET 1 OF 1	
				REV N	