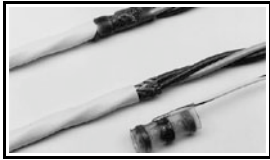


What can we help you find?

[Products](#) [Industries](#) [Resources](#) [About TE](#) [My Account](#) [Innovation](#) [Support Center](#)

CWT-7-W122-5 Product Details

[Share](#) [Print](#) [Email](#)



CWT-7-W122-5

TE Internal Number:
764619-000

 Active

Shield Terminators

Not EU RoHS or ELV Compliant

Product Highlights:

- Shield Terminator
- Terminator Type = Solder Sleeve
- Fluid Resistance = Splash Protection
- Cable Temperature Rating = 85 °C
- Jacket Outer Diameter = 7.00 mm

[View all Features](#)

Quick Links

- ▶ [Pricing & Availability](#)
- ▶ [Search for Tooling](#)
- ▶ [Product Feature Selector](#)
- ▶ [Contact Us About This Product](#)

[Add to My Part List](#)

[Request Sample](#)

[Find Similar Products](#)

[Buy Product](#)

Documentation & Additional Information

Product Drawings:

- [SolderSleeve Terminator with Pre-Installed Lead](#) (PDF, English)

Catalog Pages/Data Sheets:

- None Available

Product Specifications:

- None Available

Application Specifications:

- None Available

Instruction Sheets:

- None Available

CAD Files:

- None Available

[List all Documents](#)

Additional Information:

- [Product Line Information](#)

Related Products:

- [Tooling](#)

Product Features (Please use the Product Drawing for all design activity)

Product Type Features:

- Product Type = Shield Terminator
- Preinstalled Lead Wire Size (mm² [AWG]) = 0.38 [22]
- Preinstalled Lead Type = XL Polyethylene
- Preinstalled Lead Stranding = Stranded

Dimensions:

- Length (Max.) (mm [in]) = 32.50 [1.280]
- Inside Diameter (mm [in]) = 6.80 [0.270]

Body Features:

- Terminator Type = Solder Sleeve
- [Jacket Outer Diameter \(mm \[in\]\)](#) = 7.00 [0.275]
- Preinstalled Lead Plating = Tin
- Preinstalled Lead Color = Green

Housing Features:

- [Shield O.D. \(Min.\) \(mm \[in\]\)](#) = 3.70 [0.145]

Configuration Features:

- [Preinstalled Lead](#) = With
- Temperature Indication System = Without

Industry Standards:

- [RoHS/ELV Compliance](#) = Not ELV/RoHS compliant
- [Lead Free Solder Processes](#) = Not relevant for lead free process
- MIL or NAS Specification (MIL-S-83519) (NAS 1747) = No

Environmental:

- Fluid Resistance = Splash Protection
- Operating Temperature (Max.) (°C) = 125

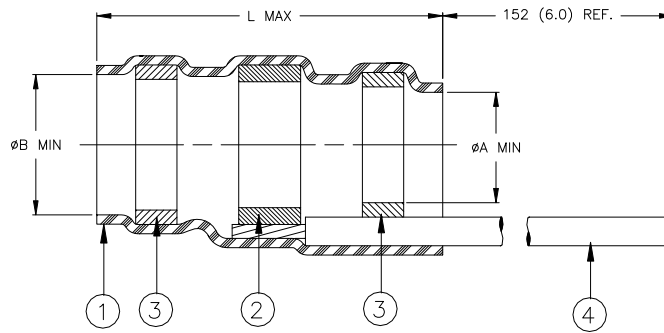
Conditions for Usage:

- [Cable Temperature Rating \(°C\)](#) = 85

Other:

- Brand = Raychem

CUSTOMER DRAWING



Product Description	Product Dimensions			Cable Dimensions				
	øA MIN	øB MIN	L MAX	øD MAX	øE MIN	øF MIN	øG MAX	J
CWT-3-W122-5	2.50 (0.098)	3.00 (0.118)	24.50 (0.965)	3.00 (0.118)	1.50 (0.059)	1.00 (0.040)	2.50 (0.098)	7.00±0.50 (0.276±0.020)
CWT-5-W122-5	4.30 (0.169)	4.80 (0.189)	29.30 (1.154)	4.80 (0.189)	2.00 (0.079)	1.50 (0.059)	4.30 (0.169)	9.00±0.50 (0.354±0.020)
CWT-6-W122-5	6.00 (0.236)	6.70 (0.264)	32.00 (1.260)	6.70 (0.264)	3.30 (0.130)	2.80 (0.110)	6.00 (0.236)	10.00±0.50 (0.394±0.020)
CWT-7-W122-5	6.40 (0.252)	7.30 (0.287)	32.50 (1.280)	7.30 (0.287)	3.30 (0.130)	2.80 (0.110)	6.40 (0.252)	11.00±1.00 (0.433±0.040)
CWT-9-W122-5	8.70 (0.343)	9.20 (0.362)	35.50 (1.398)	9.20 (0.362)	4.50 (0.177)	4.00 (0.157)	8.70 (0.343)	12.00±1.00 (0.472±0.040)
CWT-11-W122-5	10.00 (0.394)	11.50 (0.453)	35.50 (1.398)	11.50 (0.453)	4.50 (0.177)	4.00 (0.157)	10.00 (0.394)	13.00±1.00 (0.512±0.040)
CWT-13-W122-5	13.00 (0.512)	15.00 (0.591)	45.50 (1.791)	15.10 (0.594)	7.00 (0.276)	6.50 (0.256)	13.00 (0.512)	17.00±1.00 (0.669±0.040)

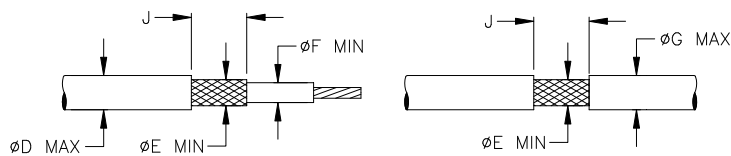
MATERIALS

- INSULATION SLEEVE: Transparent heat-shrinkable radiation cross-linked modified polyolefin.
- SOLDER PREFORM WITH FLUX:
SOLDER: TYPE Cd18 per ANSI/J-STD-006.
FLUX: TYPE ROM1 per ANSI/J-STD-004.
- MELTABLE SEALING RING: Thermally stabilized thermoplastic.
- GROUND LEAD: Raychem cross-linked polyethylene wire, AWG22, stranded tin plated copper. Color: green.

APPLICATION

- These controlled soldering devices are designed for termination of a bare or tin-plated copper shield on a cable having an insulation rated for at least +85°C, meeting the dimensional criteria listed in the table above.
- Temperature range: -55°C to +125°C.
- When installed properly, these devices will meet the requirements of TE Connectivity/Raychem Specification RT-1404.
- For installation procedure and application equipment, consult TE Connectivity /Raychem RPIP 824-00.

For best results, prepare the cable as shown:



TE TE Connectivity			TITLE: SOLDERSLEEVE TERMINATOR WITH PRE-INSTALLED LEAD		
Unless otherwise specified dimensions are in millimeters. [Inches dimensions are shown in brackets] DIMENSIONING AND TOLERANCING PER GPS (ISO STANDARDS)		Raychem Devices	DOCUMENT NO.: CWT-XX-W122-5		
TOLERANCES: 0.00 ± 0.02 MM 0.0 ± 0.2 MM 0 ± 0.5 MM	ANGLES: ± 0°30' ROUGHNESS IN MICRON	Tyco Electronics Corporation reserves the right to amend this drawing at any time. Users should evaluate the suitability of the product for their application.		REV: C	DATE: May 9, 2012
PREPARED BY: YNGUYEN	CAGE CODE: 06090	ECO NUMBER: ECO-12-008844		SCALE: NTS	SIZE: A
				SHEET: 1 of 1	

© 2003-2012 Tyco Electronics Corporation. All rights reserved.

If this document is printed it becomes uncontrolled. Check for the latest revision.