



**Have a Question?**  
 Chat with a Product Information Specialist

What can we help you find?

[Products](#) [Industries](#) [Resources](#) [About TE](#) [My Account](#) [Innovation](#) [Support Center](#)

**201568-1 Product Details**

[Share](#) [Print](#) [Email](#)



**201568-1**

TE Internal Number: 201568-1

Active

[View 3D PDF](#)

**Multimate**

Always EU RoHS/ELV Compliant (Statement of Compliance)

**Product Highlights:**

- Contact Type = Socket
- Contact Classification = Signal
- Type II Series
- Gold (30) Contact Plating, Mating Area, Material
- Wire Range = 2.00-2.15<sup>2</sup> [14] mm [AWG]

[View all Features](#)

**Quick Links**

- ▶ [Pricing & Availability](#)
- ▶ [Search for Tooling](#)
- ▶ [Product Feature Selector](#)
- ▶ [Contact Us About This Product](#)

[Add to My Part List](#) [Request Sample](#) [Find Similar Products](#) [Buy Product](#)

Documentation & Additional Information	
<p><b>Product Drawings:</b></p> <ul style="list-style-type: none"> <li>• <a href="#">CONTACT ASSEMBLY, SOCKET, #16, 14 AWG, TYPE II (PDF, English)</a></li> </ul> <p><b>Catalog Pages/Data Sheets:</b></p> <ul style="list-style-type: none"> <li>• <a href="#">Signal Contacts (PDF, English)</a></li> <li>• <a href="#">M_SERIES_PIN_AND_SOCKET_CONNECTORS (PDF, English)</a></li> <li>• <a href="#">AMP Circular Connectors for Commercial Signal &amp; Powe... (PDF, English)</a></li> </ul> <p><b>Product Specifications:</b></p> <ul style="list-style-type: none"> <li>• <a href="#">Type II Screw Machine Contact (PDF, English)</a></li> </ul> <p><b>Application Specifications:</b></p> <ul style="list-style-type: none"> <li>• <a href="#">Type II Screw Machine Pin and Socket Contacts (PDF, English)</a></li> <li>• <a href="#">Type II Screw Machine Contacts (PDF, Japanese)</a></li> </ul> <p><b>Instruction Sheets:</b></p> <ul style="list-style-type: none"> <li>• <a href="#">Selection of Multimate Pin and Socket Contacts (PDF, English)</a></li> <li>• <a href="#">Hand Crimping Tool 90281-1 (PDF, English)</a></li> <li>• <a href="#">Application and Maintenance for Crimping Die Assemblies (PDF, English)</a></li> <li>• <a href="#">Crimping Dies 90080-2 and 90103 (PDF, English)</a></li> <li>• <a href="#">Application and Maintenance for Hand Crimping Tool (PDF, English)</a></li> </ul> <p><b>CAD Files: (CAD Format &amp; Compression Information)</b></p> <ul style="list-style-type: none"> <li>• <a href="#">2D Drawing (DXF, Version U)</a></li> <li>• <a href="#">3D Model (IGES, Version U)</a></li> <li>• <a href="#">3D Model (STEP, Version U)</a></li> </ul>	<p><b>Additional Information:</b></p> <ul style="list-style-type: none"> <li>• <a href="#">Product Line Information</a></li> </ul> <p><b>Related Products:</b></p> <ul style="list-style-type: none"> <li>• <a href="#">Tooling</a></li> </ul>

[List all Documents](#)

Product Features (Please use the Product Drawing for all design activity)	
<p><b>Product Type Features:</b></p> <ul style="list-style-type: none"> <li>• Series = Type II</li> <li>• Insulation Support = No</li> <li>• Termination Method to Wire/Cable = Crimp</li> <li>• Wire/Cable Type = Discrete Wire</li> <li>• Color Code = Violet/Blue</li> <li>• Grade = Commercial</li> <li>• Retention Spring Material = Stainless Steel</li> </ul> <p><b>Mechanical Attachment:</b></p> <ul style="list-style-type: none"> <li>• Contact Retention in Housing = Crimp Snap-In</li> </ul> <p><b>Electrical Characteristics:</b></p> <ul style="list-style-type: none"> <li>• High Current = No</li> </ul> <p><b>Body Features:</b></p> <ul style="list-style-type: none"> <li>• Wire Range (mm [AWG]) = 2.00-2.15<sup>2</sup> [14]</li> <li>• Used With = CPC Connectors, M Series Connectors, G Series Connectors</li> </ul> <p><b>Contact Features:</b></p>	<p><b>Industry Standards:</b></p> <ul style="list-style-type: none"> <li>• <a href="#">RoHS/ELV Compliance</a> = RoHS compliant, ELV compliant</li> <li>• <a href="#">Lead Free Solder Processes</a> = Not relevant for lead free process</li> <li>• RoHS/ELV Compliance History = Always was RoHS compliant</li> </ul> <p><b>Conditions for Usage:</b></p> <ul style="list-style-type: none"> <li>• <a href="#">Applies To</a> = Wire/Cable</li> <li>• Test Current (A) = 13.0</li> </ul> <p><b>Packaging Features:</b></p> <ul style="list-style-type: none"> <li>• <a href="#">Packaging Method</a> = Loose Piece/Bulk</li> </ul> <p><b>Other:</b></p> <ul style="list-style-type: none"> <li>• Brand = AMP</li> <li>• Comment = Extraction Tool No. 305183; Insertion Tool No. 200893-2 (for insulation diameters 1.78 [.070] or less).; turret TH501 (p/n 1-601967-5) with hand tool 601967-1.</li> </ul>

- Contact Type = Socket
- Contact Classification = Signal
- Contact Plating, Mating Area, Material = Gold (30)
- Contact Base Material = Brass
- Contact Size = 16

### Corporate Information

- [About TE](#)
- [Investors](#)
- [News Room](#)
- [Supplier Portal](#)
- [Careers](#)
- [Terms & Conditions](#)
- [Privacy Policy](#)

### Quick Links

- [Distributor Inventory](#)
- [Product Cross Reference](#)
- [Documents & Drawings](#)
- [Product Compliance Support Center](#)
- [Site Map](#)

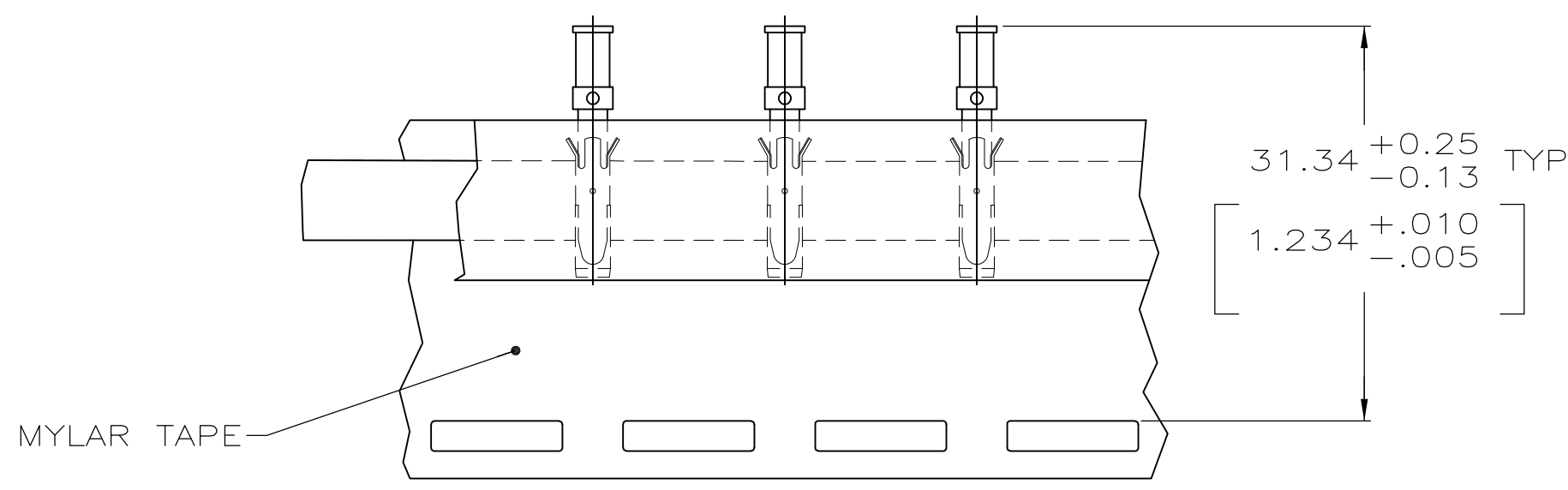
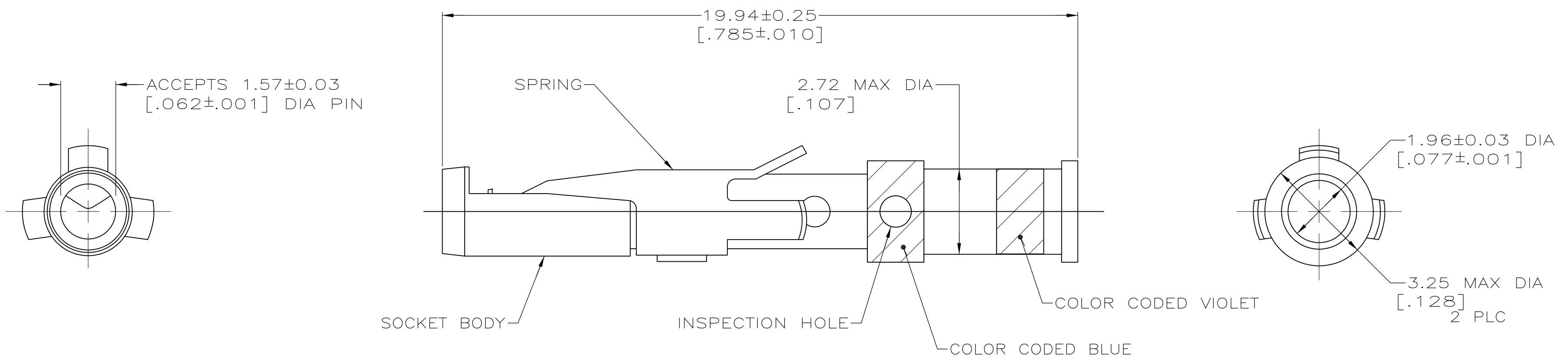
### Customer Support

- [Email or Chat With Us](#)
- [Find a Phone Number](#)
- [Knowledge Base](#)
- [Manage Your Account](#)

### Keep Me Informed



MOD	LOC	DIST	P	F	ZONE	LTR	DESCRIPTION	DATE	APPD
4	BD	39				U	ADDED -8 NPR 4680 AND REDRAWN ON CAD, OBS -4 EC 0020-344-93	04/06/93	-
						U1	REVISED PER ECO-09-020935	08SEP09	KK AEG



TAPE MTG DETAIL  
SCALE 2:1

- △ 0.76µm [.000030] MIN GOLD OVER 1.27µm [.000050] MIN NICKEL.
- △ 1.27µm [.000050] MIN GOLD OVER 1.27µm [.000050] MIN NICKEL.
- △ WHEN ORDERING CONTACT ASSEMBLY ON TAPE, ORDER BY THE TAPE NUMBER PLUS THE PACKAGING CODE AS FOLLOWS:
  1. FOR USE WITH AMP TAPETRONIC, PNEUMATIC TOOL-
    - A. 1000 PARTS TO A BOX ADD PACKAGING CODE: 1MBOX
  2. FOR USE WITH 4/8 INDENT STRIPPER CRIMPER-
    - A. 1000 PARTS TO A REEL ADD PACKAGING CODE: 1MREEL
    - B. 5000 PARTS TO A REEL ADD PACKAGING CODE: 5MREEL
- △ OBSOLETE PARTS: OBSOLETE CIS STREAMLINING PER D.RENAUD/D.SINISI

△ 4	OBSOLETE	SMALL PACK	△ 1	-201568-8-
	OBSOLETE	STANDARD	△ 2	201568-4
		TAPE MTG (SEE DETAIL) △ 3	△ 1	201568-3
		STANDARD	△ 1	201568-1
		PACKAGING TYPE	SOCKET BODY FINISH	PART NO
DO NOT SCALE PRINT. UNLESS SPECIFIED DIMENSIONS IN mm [INCHES] TOLERANCES ON :		DR 04/06/93 D.GELTZ	AMP Incorporated Harrisburg, PA 17105-3608	
2 PLC DEC ± -		CHK 4-26-93 R.STONE		
3 PLC DEC ± -		APPD 4-29-93 R.S.KLINE	NAME	
ANGLES ± -		APPD -	CONTACT ASSEMBLY, SOCKET, #16, 14 AWG, TYPE II	
MATERIAL		PRODUCT SPEC		
SOCKET BODY: COPPER ALLOY		APPLICATION SPEC	SIZE	CAGE CODE
SPRING: STAINLESS STEEL			SCALE	DRAWING NO
FINISH				
SOCKET BODY: SEE TABLE			10:1	00779
		WEIGHT		C-201568
				SHEET 1 OF 1

THIS DRAWING IS A CONTROLLED DOCUMENT FOR AMP INCORPORATED. IT IS SUBJECT TO CHANGE AND THE CONTROLLING ENGINEERING ORGANIZATION SHOULD BE CONTACTED FOR THE LATEST REVISION.