

## 5-1571552-0 Product Details

[Share](#) [Print](#) [Email](#)




5-1571552-0

TE Internal Number: 5-1571552-0

 Active

[View 3D PDF](#)

### DIP Sockets

-  Always EU RoHS/ELV Compliant  
(Statement of Compliance)

### Product Highlights:

- Socket Style = Standard
- Through Hole Contact Termination Type
- 2.54 mm Centerline
- Row-to-Row Spacing = 15.24 mm
- 32 Positions

[View all Features](#)

### Quick Links

- ▶ [Pricing & Availability](#)
- ▶ [Search for Tooling](#)
- ▶ [Product Feature Selector](#)
- ▶ [Contact Us About This Product](#)

[Add to My Part List](#)

[Request Sample](#)

[Find Similar Products](#)

[Buy Product](#)

### Documentation & Additional Information

#### Product Drawings:

- [OPEN FRAME DIP. ECONOMY \(STAMPED CONTACT\) \(REF AUGA... \(PDF, English\)](#)

#### Catalog Pages/Data Sheets:

- None Available

#### Product Specifications:

- None Available

#### Application Specifications:

- None Available

#### Instruction Sheets:

- None Available

#### CAD Files: (CAD Format & Compression Information)

- [2D Drawing \(DXF, Version E2\)](#)
- [3D Model \(IGES, Version E2\)](#)
- [3D Model \(STEP, Version E2\)](#)

[List all Documents](#)

#### Additional Information:

- [Product Line Information](#)

#### Related Products:

- [Tooling](#)

### Product Features (Please use the Product Drawing for all design activity)

#### Product Type Features:

- Profile = Standard
- [Frame Style](#) = Ladder
- [Leg Style](#) = Straight
- Product Series = 800 Series

#### Electrical Characteristics:

- Insulation Resistance (MΩ) = 5,000
- Contact Resistance (mΩ) = 10

#### Termination Features:

- [Contact Termination Type](#) = Through Hole
- [Termination Post Length \(mm \[in\]\)](#) = 3.18 [0.125]

#### Dimensions:

- [Height Above PC Board \(mm \[in\]\)](#) = 2.67 [0.105]

#### Body Features:

#### Housing Features:

- [Centerline \(mm \[in\]\)](#) = 2.54 [0.100]
- Housing Material = Thermoplastic - GF

#### Configuration Features:

- [Number of Positions](#) = 32

#### Industry Standards:

- [RoHS/ELV Compliance](#) = RoHS compliant, ELV compliant
- [Lead Free Solder Processes](#) = Wave solder capable to 260°C, Wave solder capable to 240°C, Wave solder capable to 265°C
- RoHS/ELV Compliance History = Always was RoHS compliant
- UL Flammability Rating = UL 94V-0

#### Conditions for Usage:

- [Row-to-Row Spacing \(mm \[in\]\)](#) = 15.24 [0.600]
- [Mount Style](#) = Vertical
- [Sleeve Material](#) = Copper

**Contact Features:**

- [Socket Style](#) = Standard
- [Contact Base Material](#) = Beryllium Copper
- [Contact Plating, Mating Area, Material](#) = Gold (20)
- [Contact Style](#) = Stamped + Formed
- [Mating Contact Type](#) = Four-Fingered
- [Solder Tail Contact Plating](#) = Tin

- [Temperature Range \(°C\)](#) = 105

**Packaging Features:**

- [Packaging Method](#) = Tube

**Other:**

- [Brand](#) = TE Connectivity

**Corporate Information**

- [About TE](#)
- [Investors](#)
- [News Room](#)
- [Supplier Portal](#)
- [Careers](#)
- [Terms & Conditions](#)
- [Privacy Policy](#)
- [AODA Accessibility Policy](#)
- [AODA Multi-Year Accessibility Plan](#)

**Quick Links**

- [Distributor Inventory](#)
- [Product Cross Reference](#)
- [Documents & Drawings](#)
- [Product Compliance Support Center](#)
- [Site Map](#)

**Customer Support**

- [Email or Chat With Us](#)
- [Find a Phone Number](#)
- [Knowledge Base](#)
- [Manage Your Account](#)

**Keep Me Informed**



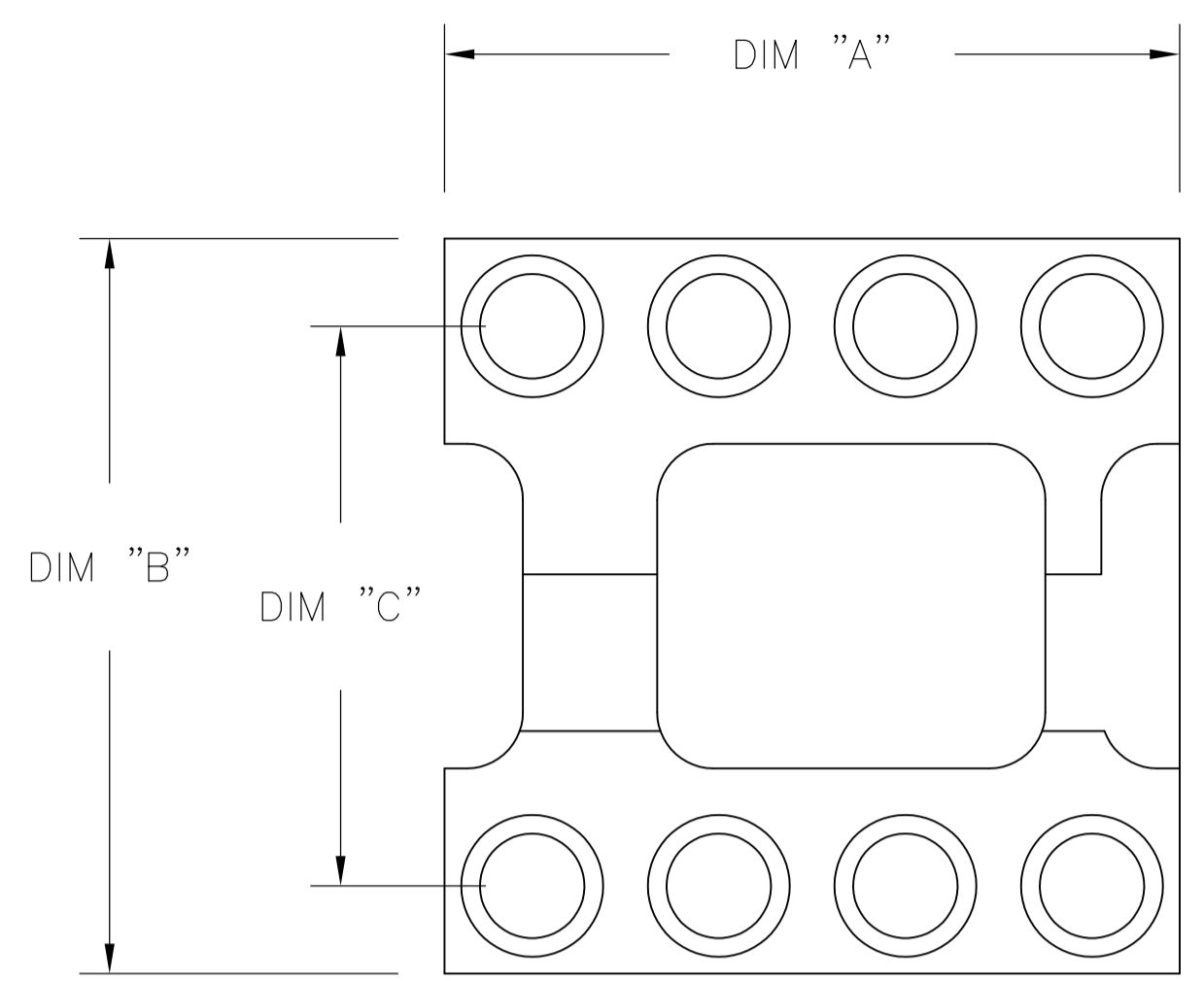


FIG. 1

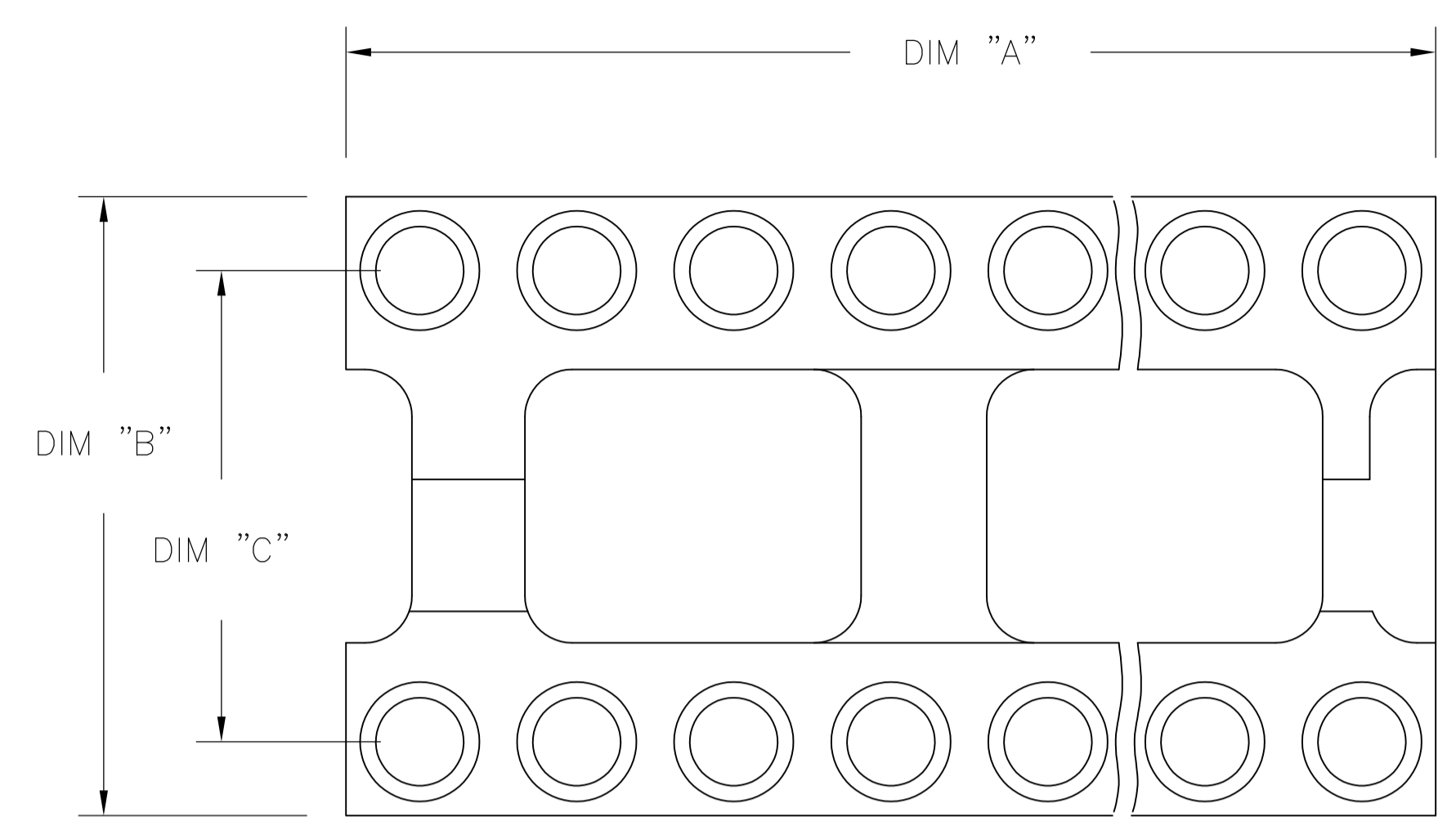


FIG. 2

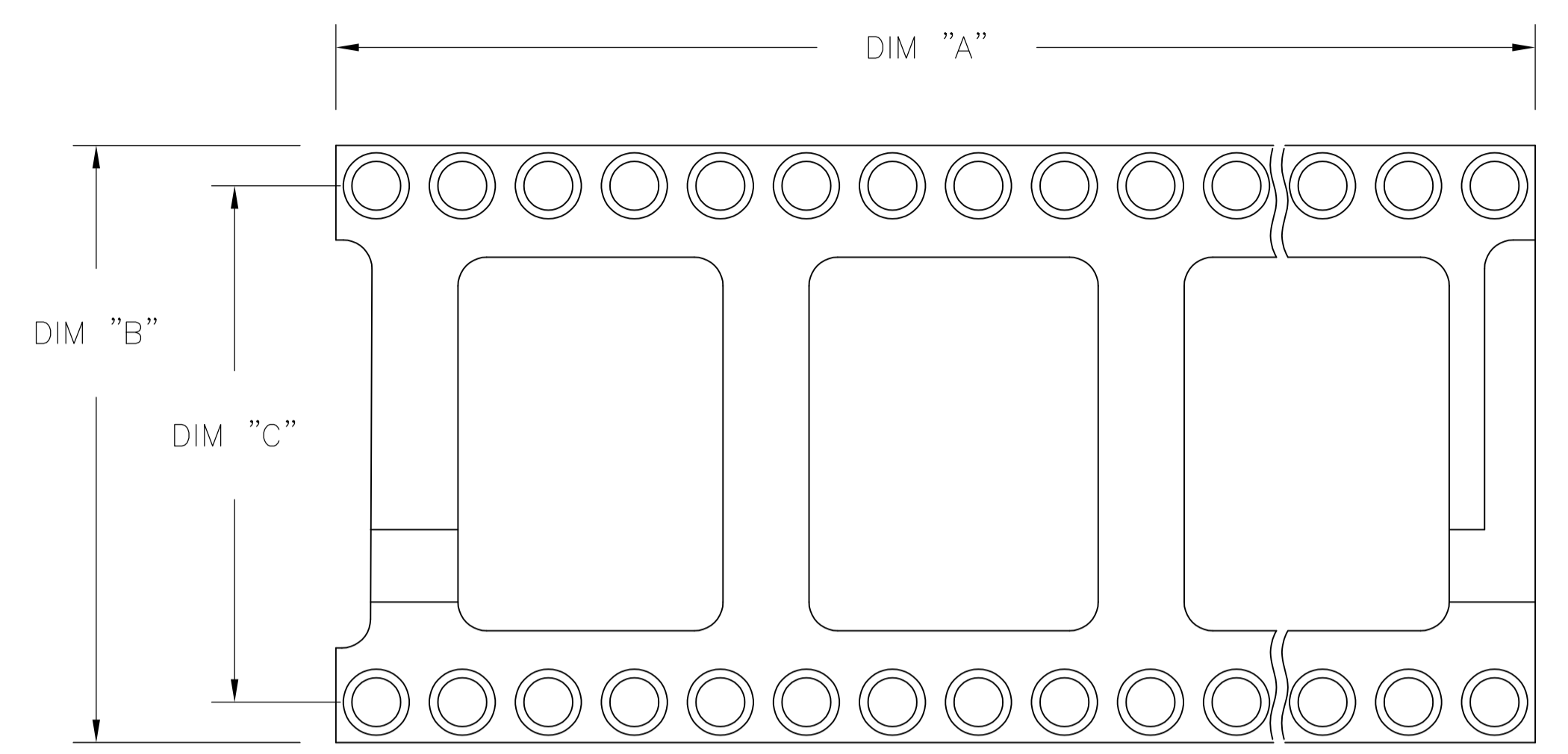
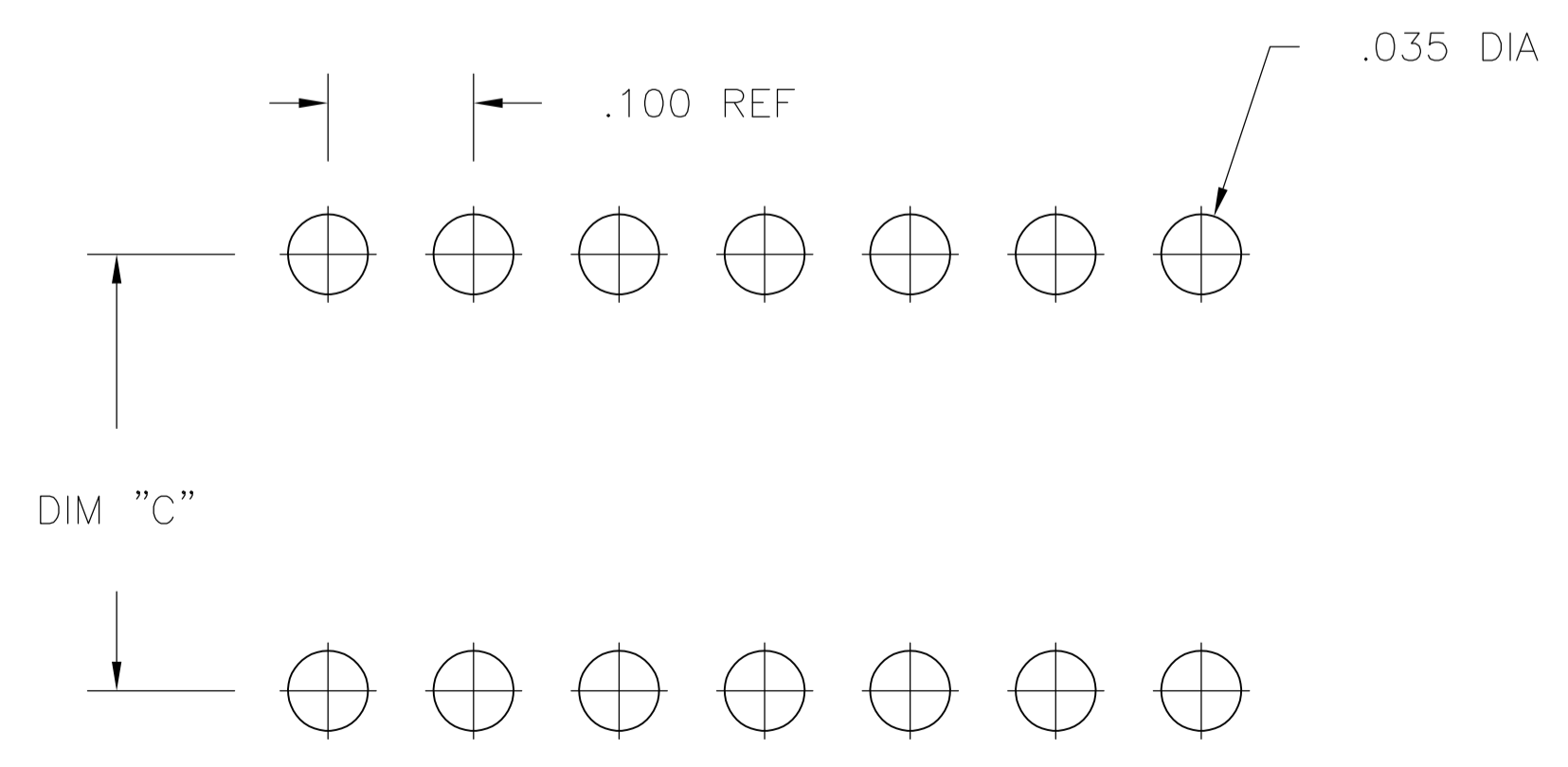
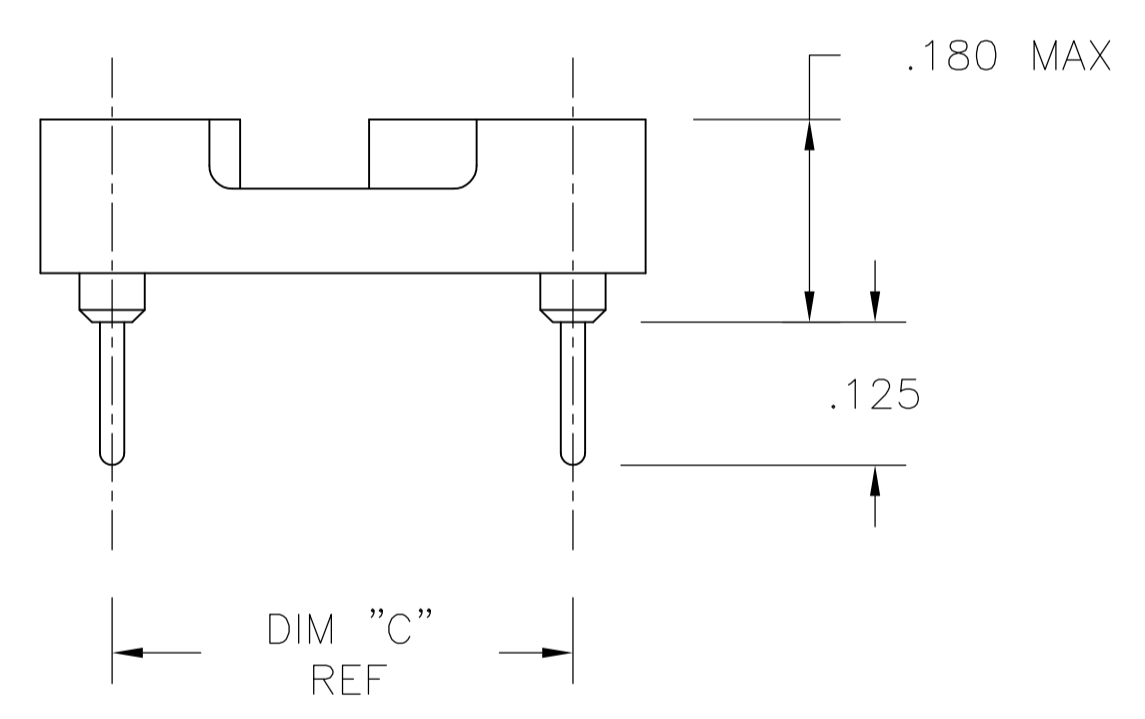
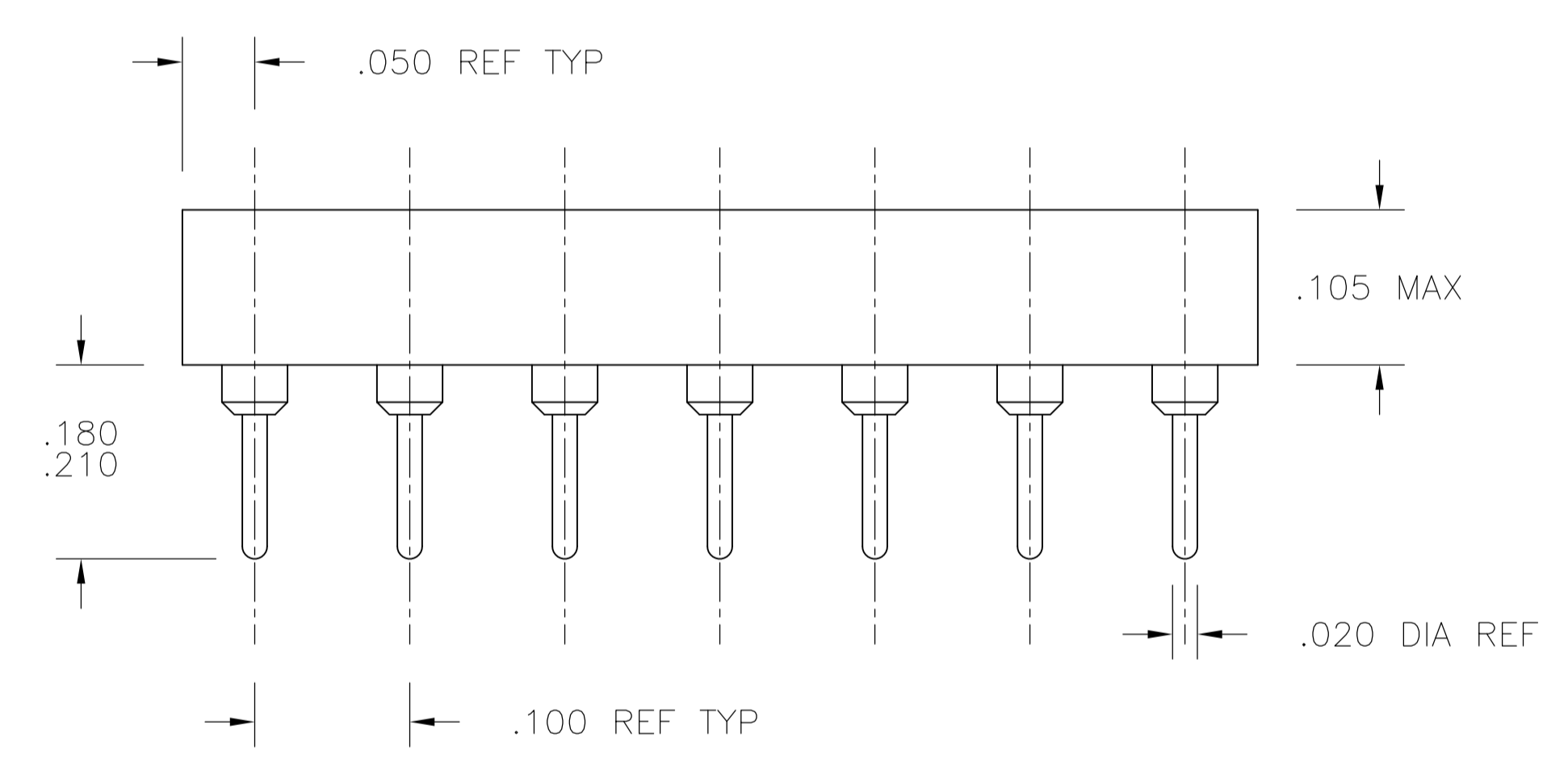


FIG. 3



1. INSULATOR MATERIAL - THERMOPLASTIC POLYESTER, PCT, BLACK, UL94 V-0
2. STAMPED CONTACT - BECU, PLATED WITH 80-200μ" TIN (LEAD FREE) OVER 75-100μ" COPPER.
3. SLEEVE - COPPER, PLATED WITH 180-340μ" THK TIN (LEAD FREE) OVER 75-125μ" MIN NICKEL.
5. STAMPED CONTACT-BECU, PLATED WITH GOLD FLASH OVER 50-100μ" NICKEL
6. STAMPED CONTACT-BECU, PLATED WITH 20μ" MIN GOLD OVER 30-100μ" NICKEL.
7. ELECTRICAL:
  - CONTACT RESISTANCE: 10 MILLIOHMS MAX
  - CONTACT RATING: 3 AMPS
  - CAPACITANCE: 1.0 pF PER MIL-STD-202, METHOD 305
  - INSULATION RESISTANCE: 5000 OHMS MIN @ 500 VDC PER MIL-STD-1344, METHOD 3003.1
  - DIELECTRIC WITHSTANDING VOLTAGE: 1000 VOLTS (RMS) PER MIL-STD-1344, METHOD 3001.1
8. MECHANICAL:
  - INSERTION FORCE: 179 GRAMS AVG
  - WITHDRAWAL FORCE: 63 GRAMS AVG
  - "ACCEPTS IC PIN - .009"X.015" THROUGH .011"X.020", OR .016" TO .021" DIAMETER, .150/.105 LONG"
9. ENVIRONMENTAL:
  - OPERATING TEMPERATURE: -55°C TO +105°C
10. OBSOLETE PARTS: OBSOLETE CIS STREAMLINING PER D.RENAUD/D.SINISI

P.C.B. HOLE LAYOUT  
TOLERANCE ±.003

THIS DRAWING IS A CONTROLLED DOCUMENT.		DIN: BSV	27JUL04	TE Connectivity																		
DIMENSIONS: INCHES		TOLERANCES UNLESS OTHERWISE SPECIFIED:																				
<table border="1"> <tr><td>0. PLC</td><td>±</td><td>-</td></tr> <tr><td>1. PLC</td><td>±</td><td>-</td></tr> <tr><td>2. PLC</td><td>±</td><td>-</td></tr> <tr><td>3. PLC</td><td>±</td><td>.005</td></tr> <tr><td>4. PLC</td><td>±</td><td>-</td></tr> <tr><td>ANGLES</td><td>±</td><td>-</td></tr> </table>		0. PLC	±	-	1. PLC	±	-	2. PLC	±	-	3. PLC	±	.005	4. PLC	±	-	ANGLES	±	-	APVD: K. WRIGHT		NAME: OPEN FRAME DIP, ECONOMY (STAMPED CONTACT) (REF AUGAT 800 SERIES)
0. PLC	±	-																				
1. PLC	±	-																				
2. PLC	±	-																				
3. PLC	±	.005																				
4. PLC	±	-																				
ANGLES	±	-																				
MATERIAL: SEE NOTES		FINISH: SEE NOTES		APPLICATION SPEC: -	RESTRICTED TO: -																	
WEIGHT: -		SIZE: A1		CAGE CODE: 00779	DRAWING NO: 1571552																	
CUSTOMER DRAWING		SCALE: 4:1		SHEET: 1 OF 2	REV: E4																	

△3△6△10	OBSOLETE	GOLD	TIN	.400±.005	.500	1.200	2	24	5-1571552-7
△3△6		GOLD	TIN	.300±.005	.400	1.200	2	24	5-1571552-6
△3△6		GOLD	TIN	.900±.005	1.000	3.200	3	64	5-1571552-5
△3△6		GOLD	TIN	.600±.005	.700	2.400	3	48	5-1571552-4
△3△6		GOLD	TIN	.600±.005	.700	2.100	3	42	5-1571552-3
△3△6		GOLD	TIN	.600±.005	.700	2.000	3	40	5-1571552-2
△3△6		GOLD	TIN	.600±.005	.700	1.800	3	36	5-1571552-1
△3△6		GOLD	TIN	.600±.005	.700	1.600	3	32	5-1571552-0
△3△6		GOLD	TIN	.600±.005	.700	1.400	2	28	4-1571552-9
△3△6		GOLD	TIN	.600±.005	.700	1.200	2	24	4-1571552-8
△3△6		GOLD	TIN	.400±.005	.500	1.100	2	22	4-1571552-7
△3△6		GOLD	TIN	.300±.005	.400	1.000	2	20	4-1571552-6
△3△6		GOLD	TIN	.300±.005	.400	.900	2	18	4-1571552-5
△3△6		GOLD	TIN	.300±.005	.400	.800	2	16	4-1571552-4
△3△6		GOLD	TIN	.300±.005	.400	.400	1	8	4-1571552-3
△3△6		GOLD	TIN	.300±.005	.400	.700	2	14	4-1571552-2
△3△5△10	OBSOLETE	G F	TIN	.400±.005	.500	1.200	2	24	3-1571552-7
△3△5		G F	TIN	.300±.005	.400	1.200	2	24	3-1571552-6
△3△5		G F	TIN	.900±.005	1.000	3.200	3	64	3-1571552-5
△3△5		G F	TIN	.600±.005	.700	2.400	3	48	3-1571552-4
△3△5		G F	TIN	.600±.005	.700	2.100	3	42	3-1571552-3
△3△5		G F	TIN	.600±.005	.700	2.000	3	40	3-1571552-2
△3△5		G F	TIN	.600±.005	.700	1.800	3	36	3-1571552-1
△3△5		G F	TIN	.600±.005	.700	1.600	3	32	3-1571552-0
△3△5		G F	TIN	.600±.005	.700	1.400	2	28	2-1571552-9
△3△5		G F	TIN	.600±.005	.700	1.200	2	24	2-1571552-8
△3△5		G F	TIN	.400±.005	.500	1.100	2	22	2-1571552-7
△3△5		G F	TIN	.300±.005	.400	1.000	2	20	2-1571552-6
△3△5		G F	TIN	.300±.005	.400	.900	2	18	2-1571552-5
△3△5		G F	TIN	.300±.005	.400	.800	2	16	2-1571552-4
△3△5		G F	TIN	.300±.005	.400	.700	2	14	2-1571552-3
△3△5		G F	TIN	.300±.005	.400	.400	1	8	2-1571552-2
△3△2		TIN	TIN	.400±.005	.500	1.200	2	24	1-1571552-7
△3△2		TIN	TIN	.300±.005	.400	1.200	2	24	1-1571552-6
△3△2△10	OBSOLETE	TIN	TIN	.900±.005	1.000	3.200	3	64	1-1571552-5
△3△2△10	OBSOLETE	TIN	TIN	.600±.005	.700	2.400	3	48	1-1571552-4
△3△2△10	OBSOLETE	TIN	TIN	.600±.005	.700	2.100	3	42	1-1571552-3
△3△2		TIN	TIN	.600±.005	.700	2.000	3	40	1-1571552-2
△3△2△10	OBSOLETE	TIN	TIN	.600±.005	.700	1.800	3	36	1-1571552-1
△3△2		TIN	TIN	.600±.005	.700	1.600	3	32	1-1571552-0
△3△2		TIN	TIN	.600±.005	.700	1.400	2	28	1571552-9
△3△2		TIN	TIN	.600±.005	.700	1.200	2	24	1571552-8
△3△2△10	OBSOLETE	TIN	TIN	.400±.005	.500	1.100	2	22	1571552-7
△3△2		TIN	TIN	.300±.005	.400	1.000	2	20	1571552-6
△3△2		TIN	TIN	.300±.005	.400	.900	2	18	1571552-5
△3△2		TIN	TIN	.300±.005	.400	.800	2	16	1571552-4
△3△2		TIN	TIN	.300±.005	.400	.700	2	14	1571552-3
△3△2		TIN	TIN	.300±.005	.400	.400	1	8	1571552-2

FINISH CONTACT/SLEEVE	"C" MAX	"B" MAX	"A" MAX	FIG	NO. OF POSN	PART NO.
-----------------------	---------	---------	---------	-----	-------------	----------

THIS DRAWING IS A CONTROLLED DOCUMENT. DWN: BSV 27JUL04  
 DIMENSIONS: INCHES TOLERANCES UNLESS OTHERWISE SPECIFIED:  
 0. PLC ± -  
 1. PLC ± -  
 2. PLC ± -  
 3. PLC ± .005  
 4. PLC ± -  
 ANGLES ± -  
 FINISH SEE SHEET 1  
 MATERIAL SEE SHEET 1  
 WEIGHT -  
 CUSTOMER DRAWING

TE Connectivity  
 NAME: OPEN FRAME DIP, ECONOMY (STAMPED CONTACT) (REF AUGAT 800 SERIES)  
 PRODUCT SPEC: -  
 APPLICATION SPEC: -  
 SIZE: A1  
 CAGE CODE: 00779  
 DRAWING NO: 1571552  
 RESTRICTED TO: -  
 SCALE: 1:1 SHEET 2 OF 2 REV E4