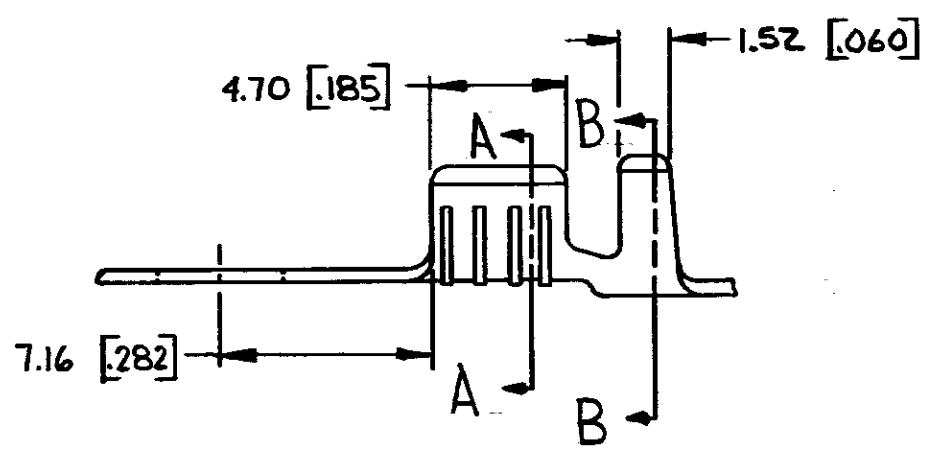
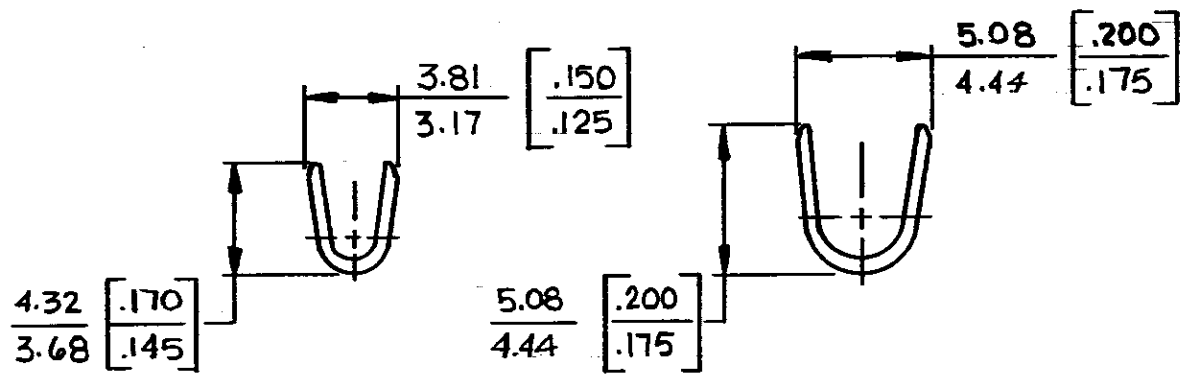
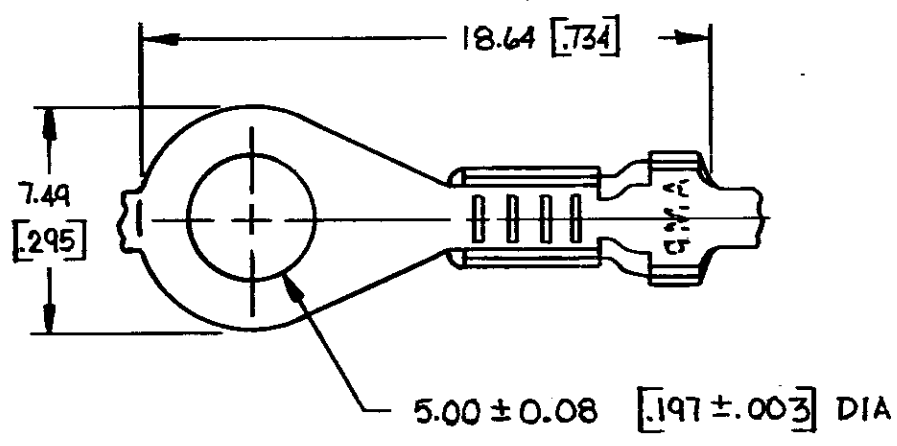


© COPYRIGHT 1965 BY AMP INCORPORATED, HARRISBURG, PA.
ALL INTERNATIONAL RIGHTS RESERVED. AMP INCORPORATED PRODUCTS
COVERED BY U. S. AND FOREIGN PATENTS AND/OR PATENTS PENDING.

REVISIONS						
P	F	ZONE	LTR	DESCRIPTION	DATE	APPROVED
✓	✓		E	REDRAWN & REVISED A-3943	6-26-78	DTA SS
✓	✓		F	INSUL. SUPP. LENGTH AF-0781	2-20-85	RLT 6/



*U-S DOWN	—	0.8-2.0mm ²	2.54 - 3.56	TIN	↑	60772-3
*U-S UP	#10	[18 - 14]	[.100 - .140]	TIN	↑	60772-2
*U-S UP				NONE	0.46 [.018] BRASS	60772-1
REEL DIRECTION	STUD SIZE	WIRE RANGE	INSULATION RANGE	FINISH	MATERIAL	PART NO

UNLESS OTHERWISE SPECIFIED DIMENSIONS ARE IN ~~INCHES~~ mm
TOLERANCES ON:
DECIMALS ±0.38 [.015]
ANGLES ± 1° 0'

MATERIAL SEE TABLE

FINISH SEE TABLE

CONTRACT NO
DR D. Adin 6-26-78
CHK J. Hoffmann 7-25-78
APPD R.P. Frantz 3-8-78
APPD G. J. Licko 8-10-78
DSGN APPD
OTHER APPD



NAME RING

SIZE B CODE IDENT NO 00779 DRAWING NO 60772

SCALE SHEET

- CONTINUOUS STRIP ON REELS
- DIMENSIONS IN BRACKETS ARE IN INCHES

METRIC