

SPECIFICATIONS

Mechanical

Contact Retention Force: 0.75Lbs (0.34kgf) min. per Contact
Durability: 25 Cycles
Dram Board Insertion Force: 3 oz max. per Contact

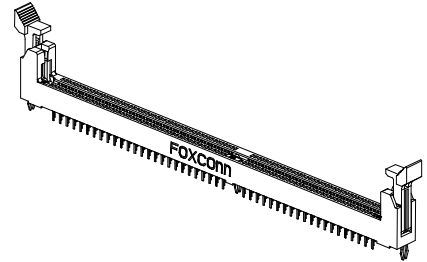
Electrical

Voltage Raging: 250V AC
Current Rating: 1.0A max., 30 max., in Temperature Rise
Insulation Resistance: 1000MW min. initial
Dielectric Withstanding Voltage: 500V AC at Sea Level
Low Level Contact Resistance: 30mW max. initial

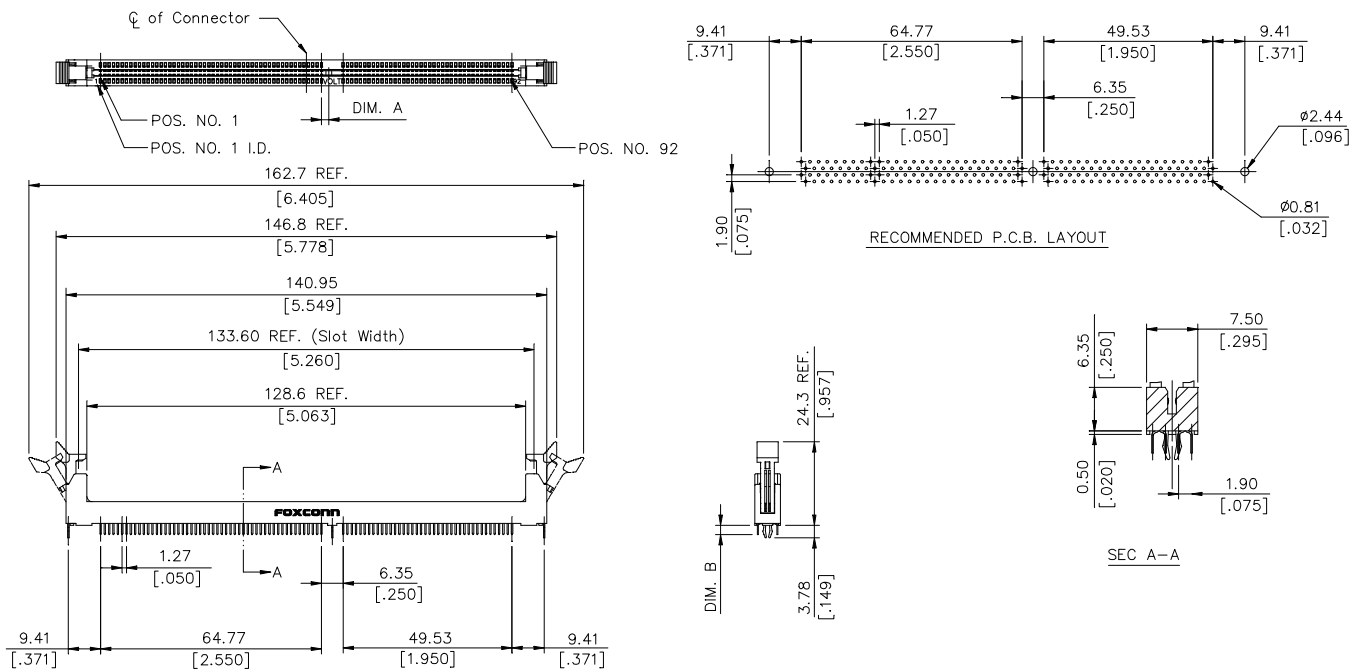
Physical

Housing: Thermoplastic, UL 94V-0 rated in Black Color
Contact: Copper alloy
Ejector: Thermoplastic, UL 94V-0 rated in Ivory or Natural Color
Metal Hold Down: Copper alloy
Operating Temperature: -55 to +105

AT092 Series
Vertical Type, T/H Type
1.27mm [.050"] Pitch
184 Pos.

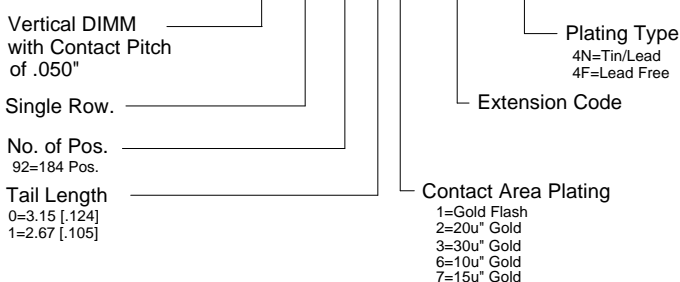


DRAWING



ORDERING INFORMATION

PRODUCT NO.: A T 0 9 2 * * - D 5 - * *



AT0920*-D5-4F	184	2.5V	2.175 [.086]	3.15 [.124]
AT0921*-D5-4F		2.5V	2.175 [.086]	2.67 [.105]
P/N	POS.	VOLTAGE MARKING	DIM. A	DIM. B