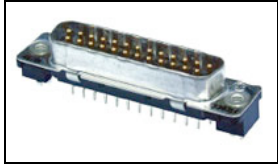


## 1-5747871-3 Product Details



**1-5747871-3**

TE Internal Number: 1-5747871-3

 Active

### Standard Board Mount Connectors

 Always EU RoHS/ELV Compliant (Statement of Compliance)

#### Product Highlights:

- 9 Positions
- Connector Style = Plug
- PCB Mounting Orientation = Vertical
- Product Series = HD 20
- With Mating Connector Lock

### Documentation & Additional Information

#### Product Drawings:

- [PLUG ASSEMBLY, SIZE 1, 9 POS, VERTICAL, FRONT SHELL...](#) (PDF, English)

#### Catalog Pages/Data Sheets:

- [AMPLIMITE Subminiature D Connectors - Straight Poste...](#) (PDF, English)

#### Product Specifications:

- [AMPLIMITE HD-20 PCB Mounted Connector](#) (PDF, English)

#### Application Specifications:

- [AMPLIMITE HD-20 Straight Solder Contact Tine, Front ...](#) (PDF, English)

#### Instruction Sheets:

- None Available

#### CAD Files: (CAD Format & Compression Information)

- [2D Drawing](#) (DXF, Version A)
- [3D Model](#) (IGES, Version A)
- [3D Model](#) (STEP, Version A)

#### Additional Information:

- [Product Line Information](#)

#### Additional Product Images:

- [Product Photo](#)

#### Related Products:

- [Tooling](#)
- [Mating Products \(5\)](#)

### Product Features (Please use the Product Drawing for all design activity)

#### Product Type Features:

- PCB Mounting Orientation = Vertical
- Product Series = HD 20
- Mating Connector Lock = With
- Mating Connector Lock Type = Female Screwlocks, Fixed
- PCB Mount Retention = With
- PCB Mount Retention Type = Mounting Hole(s)
- Shell Type = Front Metal Shell
- Shell Size = 1
- Grounding Indents = With
- Grounding Straps = Without
- PCB Mount Style = Through Hole
- Color Code = None
- Sealed = No
- Profile = Standard
- Post Size (mm [in]) = 0.66 [.026]
- Mounting Hole Diameter (mm [in]) = 3.07 [.121]
- Shell Material = Steel

#### Mechanical Attachment:

- Panel Mount Retention = Without

#### Termination Features:

- Grounding Clips = Without
- Termination Post Length (mm [in]) = 3.18 [0.125]
- Solder Tail Contact Plating = Tin over Nickel

#### Dimensions:

- PCB Thickness, Recommended (in [mm]) = 0.062 – 0.093 [1.57 – 2.36]

#### Body Features:

- Shell Plating = Tin
- Female Screwlock Material = Zinc

#### Contact Features:

- Contact Plating, Mating Area, Material = Gold Flash
- Contact Shape = Round
- Contact Base Material = Brass

#### Housing Features:

- Connector Style = Plug
- UL Flammability Rating = UL 94V-0
- Housing Material = Thermoplastic - GF

#### Configuration Features:

- Number of Positions = 9

#### Industry Standards:

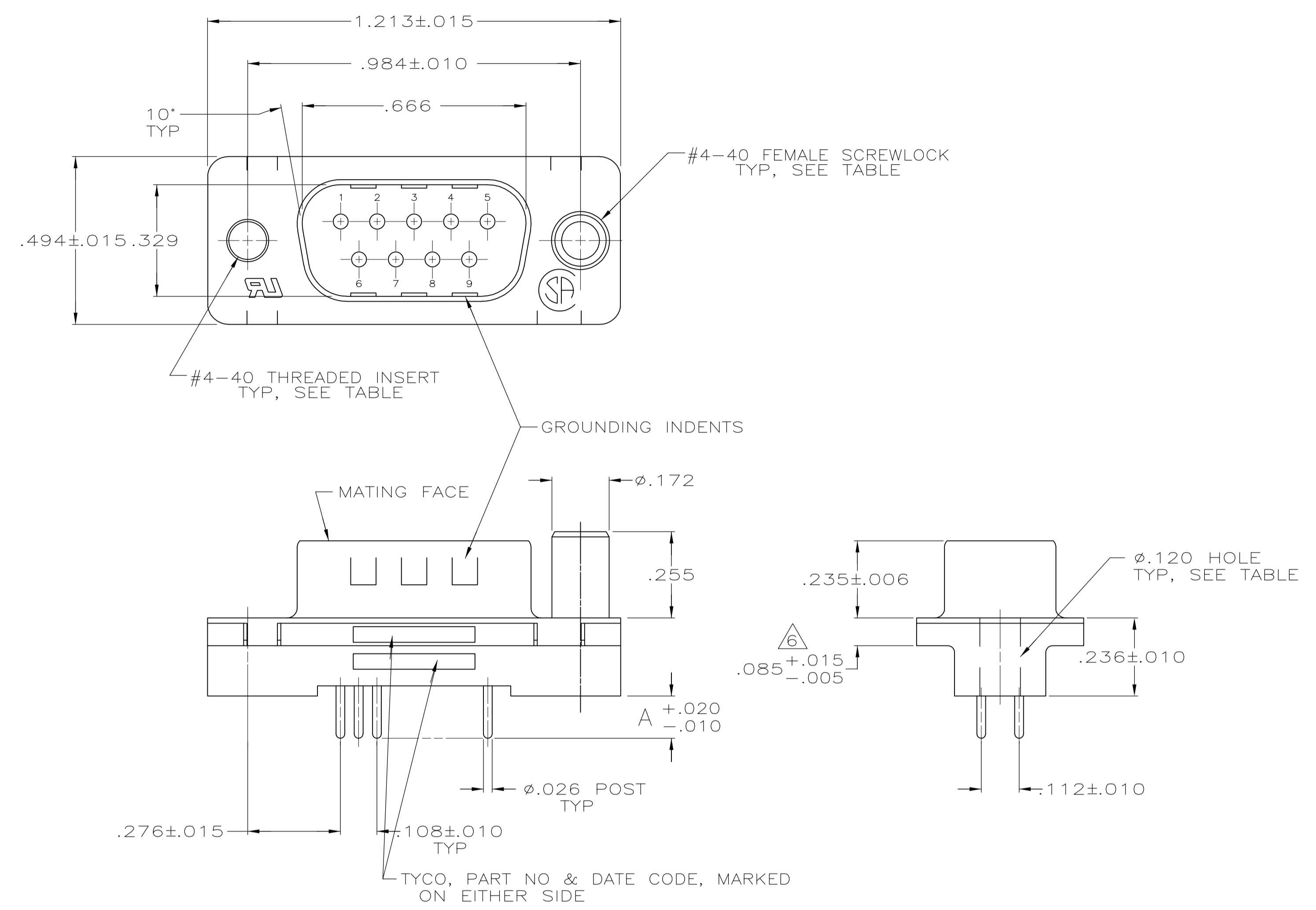
- RoHS/ELV Compliance = RoHS compliant, ELV compliant
- Lead Free Solder Processes = Wave solder capable to 240°C, Wave solder capable to 260°C, Wave solder capable to 265°C
- RoHS/ELV Compliance History = Always was RoHS compliant

#### Operation/Application:

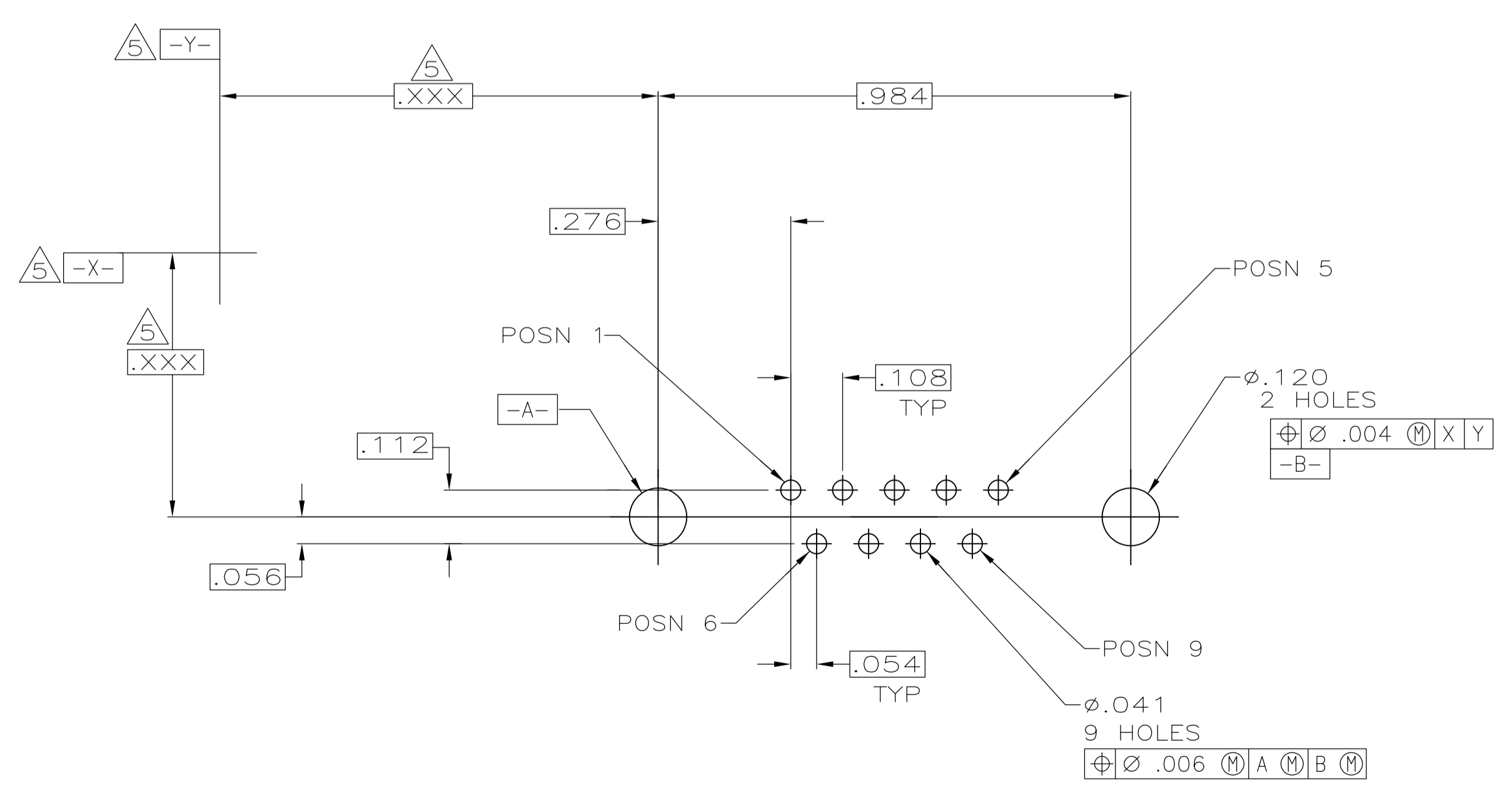
- Application = Standard

#### Other:

- Brand = AMP
- Comment = Plugs are preloaded with size 20 DF posted pin contacts



- ① HOUSING: FLAME RETARDANT 94V-0 RATED THERMOPLASTIC; COLOR: BLACK. SHELL: STEEL. CONTACTS: BRASS. SCREWLOCKS: ZINC. INSERTS: BRASS.
- ② SHELL: .000200 MIN TIN OVER .000100 MIN COPPER. CONTACTS: SEE TABLE. SCREWLOCKS: CLEAR CHROMATE. INSERTS: UNPLATED.
- ③ GOLD PLATED FOR A LENGTH OF .150 MIN FROM MATING END, GOLD FLASH IN MATED AREA, .000100 MIN TIN FOR A LENGTH OF DIMENSION A FROM OPPOSITE END, ALL OVER .000050 MIN NICKEL.
- ④ GOLD PLATED FOR A LENGTH OF .150 MIN FROM MATING END, .000030 MIN GOLD IN MATED AREA, .000100 MIN TIN FOR A LENGTH DIMENSION A FROM OPPOSITE END, ALL OVER .000050 MIN NICKEL. -OR- GOLD FLASH OVER PALLADIUM NICKEL PLATED FOR A LENGTH OF .150 MIN FROM MATING END, .000030 MIN PALLADIUM NICKEL IN MATED AREA, .000100 MIN TIN FOR A LENGTH OF DIMENSION A FROM OPPOSITE END, ALL OVER .000050 MIN NICKEL.
- ⑤ DATUMS AND BASIC DIMENSIONS ESTABLISHED BY CUSTOMER.
- ⑥ .110 MAX IN SHELL TAB CLINCH AREAS.



RECOMMENDED PC BOARD MOUNTING DIMENSIONS

FEMALE SCREWLOCKS	④	.170	1-5747871-6
	④	.125	1-5747871-4
THREADED INSERTS	③	.125	1-5747871-3
	④	.125	5747871-8
φ.120 HOLE	④	.170	5747871-4
	④	.125	5747871-2
HARDWARE	CONTACT FINISH	A	PART NO

**COPYRIGHT 2005  
TE CONNECTIVITY CORP  
ALL RIGHTS RESERVED**

THIS DRAWING IS A CONTROLLED DOCUMENT.

DIMENSIONS: INCHES	TOLERANCES UNLESS OTHERWISE SPECIFIED:	DIN B LATTUCA 28SEP05	APVD S BOLASH 28SEP05	TE Connectivity	
0 PLC ± -	1 PLC ± -	NAME M WALMSLEY 28SEP10	PRODUCT SPEC 108-40025	SIZE A1	RESTRICTED TO
2 PLC ± .005	3 PLC ± -	APPLICATION SPEC 114-40023	WEIGHT -	SCALE 1:1	SHEET 1 OF 1
4 PLC ± -	ANGLES ± °	CUSTOMER DRAWING	DRAWING NO 00779	REV 1	REV B1