

D15P33E4GX00LF - D-Subminiature Delta D : Signal
15 way Pin Right Angle Solder
US standard, 200 cycles,
Harpoons + Threaded Insert
UNC 4 - 40 + Elec cont., 1.6
mm PCB thickness



www.fci.com

Mating Half

DA15S064TLF

865615SLTLF

Specifications

General

Contact type	Signal
Gender	Pin
Number of contacts (Total)	15
Orientation	Right Angle
Product Type	Connector
Termination Style	Solder

Dimensional

Size (Shell)	A
Thickness (Board)	1.6 mm

Electrical

Current rating	5A Per contact
Resistance (Contact)	< 10 milli-ohms
Voltage rating	300V rms at 50 Hz
Voltage rating (DWV - Dielectric withstanding)	1000V rms

Mechanical

Durability (Plating - Mating cycles)	Std Class (>200 Mating Cycles)
Extraction force (Mating part)	0.3N min. Per contact
Insertion force (Mating part)	5N max. Per contact

Mounting

Attachment	Board
Mounting accessory	Harpoons + Threaded Insert UNC 4-40 + Electrical continuity
Termination	US standard

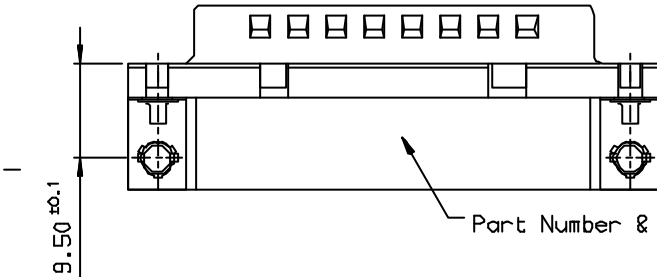
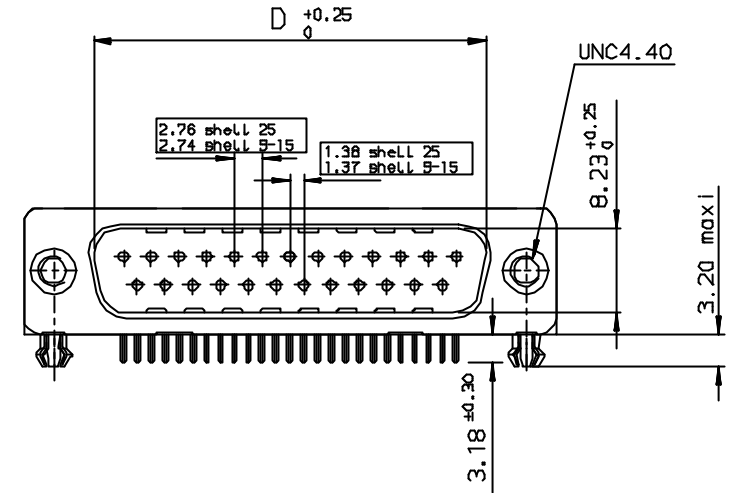
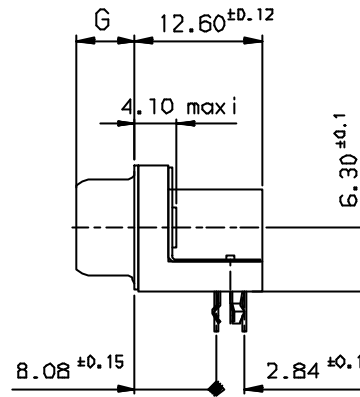
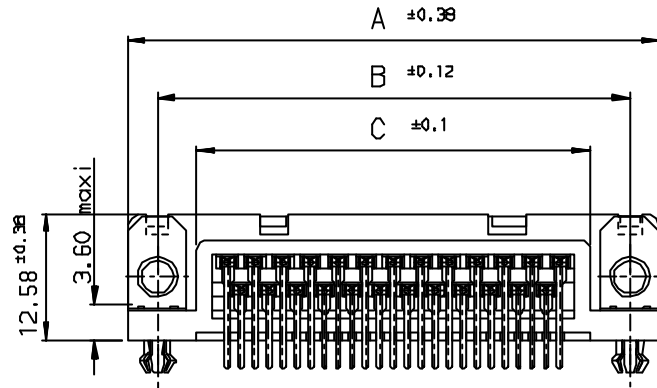
Physical

Plating (Contact)	Gold over Nickel
Plating (Shell)	Bright Pure Tin over Nickel
Plating (Termination)	Matte Tin over Nickel
Temperature (Operating - range)	-55°C to +125°C
Approvals / Certifications	
Approvals / Certifications	Recognized File E 118235 (R)
Other Features	
Most Popular Configuration	Yes

Tous droits strictement réservés. Reproduction ou communication sans l'autorisation écrite de la FCI est formellement interdite.
All rights strictly reserved. Reproduction or communication without written authority from the property of FCI. Copyright FCI.

FCI

All rights strictly reserved. Reproduction or communication without written authority from the property of FCI. Copyright FCI.

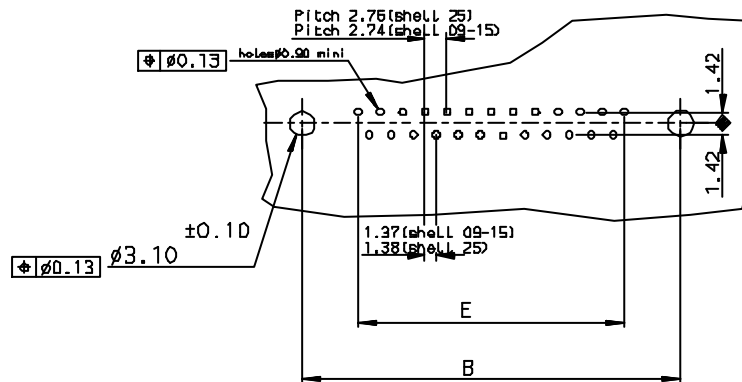


PC card drilling dimensions (after plating)
(thickness 1.50 ± 0.20 mm)

Pull parts							
SHELL	A±0.38	B±0.12	C±0.10	D±0.25	E±0.07	G±0.25	PART NUMBER
09	30.81	24.99	16.96	16.79	10.96	5.90	D09P33E4GX00**
15	39.14	33.32	25.18	25.12	19.18	5.90	D15P33E4GX00**
25	53.03	47.04	39.12	38.84	33.12	5.70	D25P33E4GX00**

GENERAL CHARACTERISTICS, SEE DRAWING C01-8646-0000

LF FOR LEAD FREE



Lib	Eon no	Dr	date
c	105-0124	JS	27/7/05

Dr JOHN SLEESA		27/10/97	Product Family	✓	Tolerance LINEAR ± 0.1 ANGULAR ± 1°	Projection	MM
Eng GEORGE VJ		27/10/97	Spec ref			Size A3	Scale
Chr GEORGE VJ		27/7/05	Material			ECN	
Appr K Somasundaram		27/7/05					
Title MALE CONNECT.DELTA D right angle with nut, harpoon & metal plate		Dwg no C01-8646-0158-2		Rev. c			
Catalog no DELTA-D		CUSTOMER COPY		Sheet 1 of 1			