



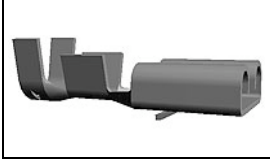
Have a Question?
 Chat with a Product Information Specialist

What can we help you find?

[Products](#) |
 [Industries](#) |
 [Resources](#) |
 [About TE](#) |
 [My Account](#) |
 [Innovation](#) |
 [Support Center](#)

60249-1 Product Details

[Share](#) |
 [Print](#) |
 [Email](#)



60249-1

TE Internal Number: 60249-1

✔ Active

[View 3D PDF](#)

Multiple Circuit Housings with Tabs & Receptacles

✔ [Always EU RoHS/ELV Compliant](#) (Statement of Compliance)

Product Highlights:

- Contact
- Contact Type = Receptacle
- Mating Area Interface Dimensions = 6.35 x 0.81 mm
- Wire Range = 1.25-3.00² [16-12] mm [AWG], (2) 1.25-1.40; [(2) 16] mm [AWG]
- Insulation Diameter = (2) 3.30 [.130] Max. mm [in], 4.06-5.33 [.160-.210] mm [in]

[View all Features](#)

Quick Links

- ▶ [Pricing & Availability](#)
- ▶ [Search for Tooling](#)
- ▶ [Product Feature Selector](#)
- ▶ [Contact Us About This Product](#)

[Add to My Part List](#) |
 [Request Sample](#) |
 [Find Similar Products](#) |
 [Buy Product](#)

Documentation & Additional Information

Product Drawings:

- [RECEPTACLE, FASTIN-FASTON, 6.35 \[.250\] SERIES](#) (PDF, English)

Catalog Pages/Data Sheets:

- [FASTIN_FASTON_Product_Line](#) (PDF, English)

Product Specifications:

- None Available

Application Specifications:

- [.110 .187, .250, .312, and .375 Series FASTIN-FASTON...](#) (PDF, English)

Instruction Sheets:

- None Available

CAD Files: [\(CAD Format & Compression Information\)](#)

- [2D Drawing](#) (DXF, Version U)
- [3D Model](#) (IGES, Version U)
- [3D Model](#) (STEP, Version U)

[List all Documents](#)

Related Products:

- [Tooling](#)

Product Features (Please use the Product Drawing for all design activity)

Product Type Features:

- [Product Type](#) = Contact
- [Receptacle Style](#) = Straight
- [Wire/Cable Type](#) = Regular Wire
- [Finish](#) = None
- [Insertion Force](#) = Normal
- [Insulation Support](#) = With
- FASTON = Yes

Termination Features:

- [Crimp Type](#) = F-Crimp

Dimensions:

- [Mating Area Interface Dimensions](#) (mm [in]) = 6.35 x 0.81 [.250 x .032]
- [Insulation Diameter](#) (mm [in]) = (2) 3.30 [.130] Max., 4.06-5.33 [.160-.210]

Body Features:

- [Wire Range](#) (mm [AWG]) = 1.25-3.00² [16-12], (2) 1.25-1.40; [(2) 16]
- [Material](#) = Brass
- [Stock Thickness](#) (mm [in]) = 0.41 [0.016]

Contact Features:

- [Contact Type](#) = Receptacle

Industry Standards:

- [RoHS/ELV Compliance](#) = RoHS compliant, ELV compliant
- [Lead Free Solder Processes](#) = Not relevant for lead free process
- [RoHS/ELV Compliance History](#) = Always was RoHS compliant
- [UL Rating](#) = Recognized
- [CSA Certified](#) = Yes

Conditions for Usage:

- [For Housing Type](#) = Single

Packaging Features:

- [Packaging Method](#) = Strip

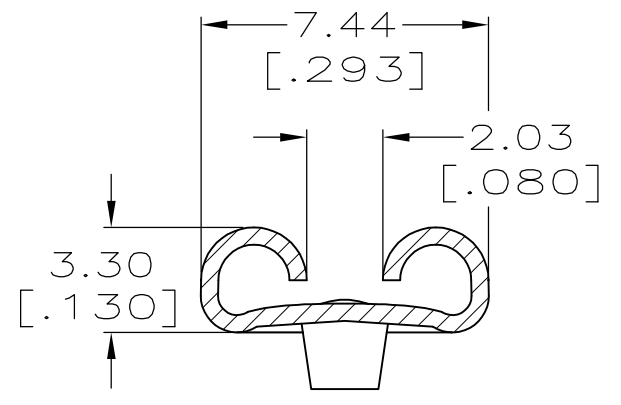
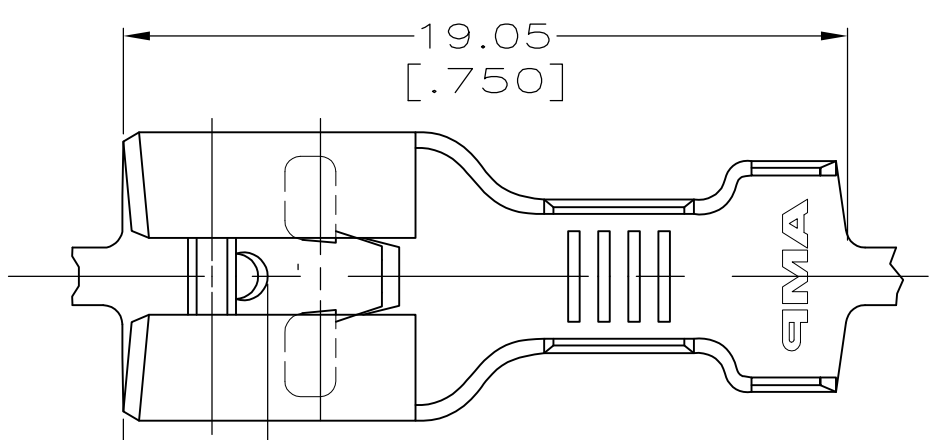
Other:

- [Line](#) = FASTIN-FASTON .250
- [Brand](#) = AMP

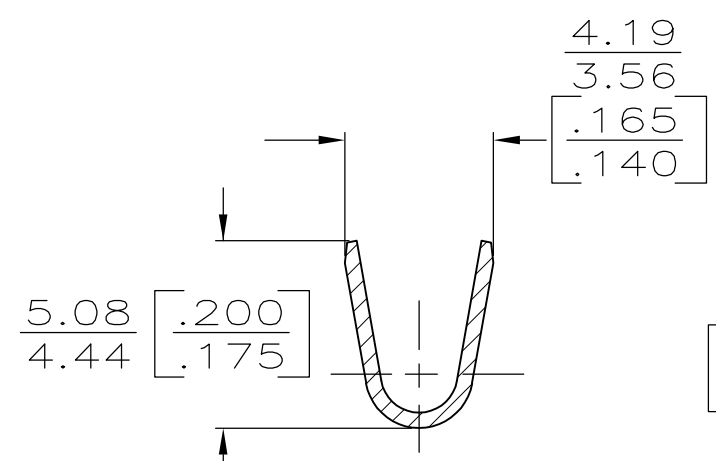
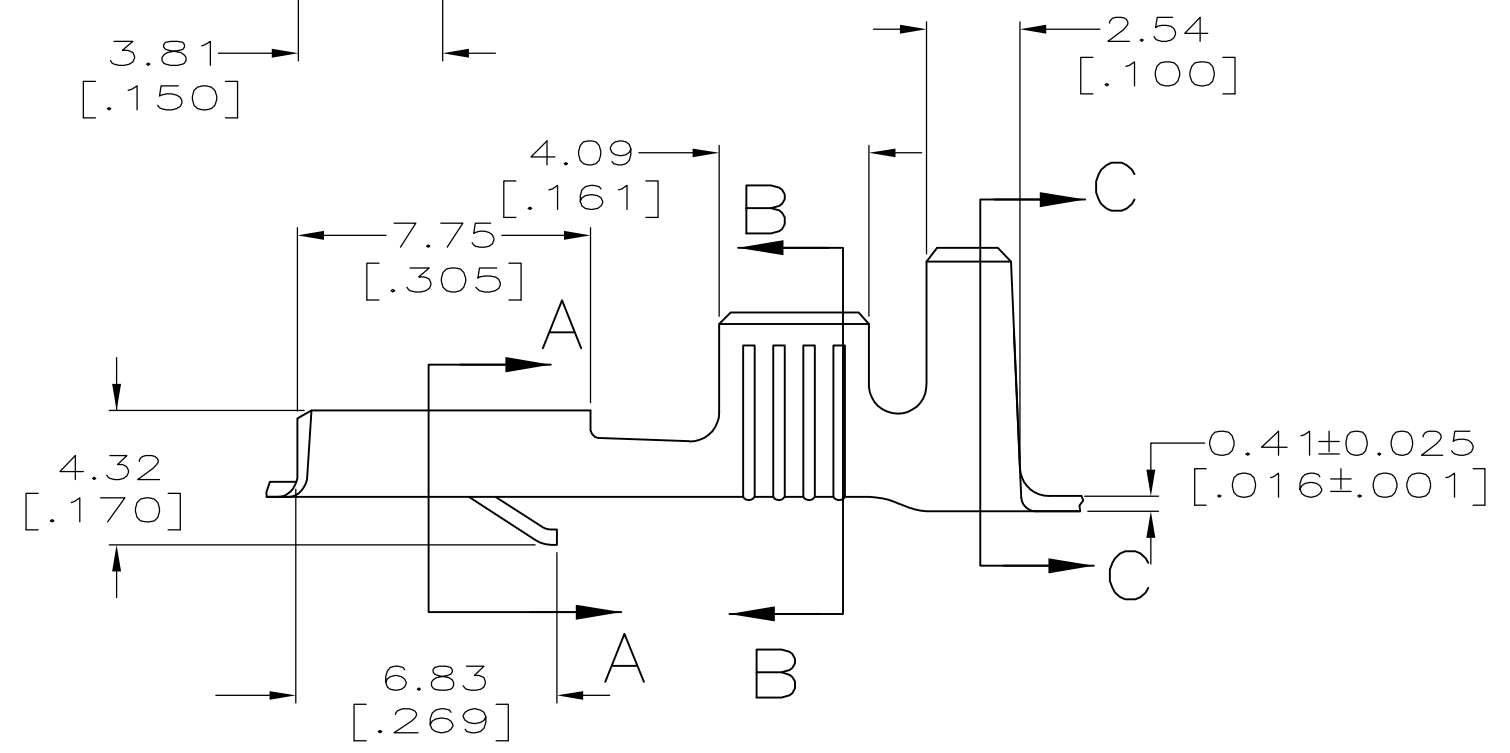
THIS DRAWING IS UNPUBLISHED. RELEASED FOR PUBLICATION
 © COPYRIGHT - By - ALL RIGHTS RESERVED.

LOC	DIST	REVISIONS			
P	LTR	DESCRIPTION	DATE	DWN	APVD
AF	50	G	REVISED PER ECR-13-005733	23AUG2013	KH PD

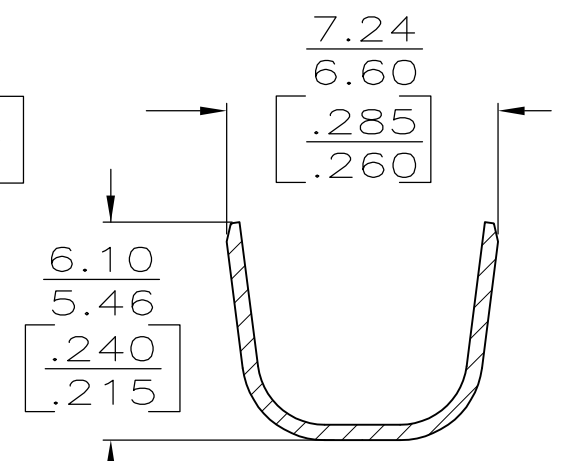
- 1 CONTINUOUS STRIP ON REELS.
- 2 ACCEPTS WIRE SIZE [#16-#12 OR TWO #16'S].
- 3 INSULATION RANGE TO BE 4.06-5.33 [.160-.210] OR TWO 3.30 [.130] MAX DIA.
- 4 MATING TAB THK IS 0.81±0.025 [.032±.001].
- △5 INTERLEAVING PAPER REQUIRED.
- △6 PRELIMINARY - NOT FOR PRODUCTION



SECTION A-A



SECTION B-B



SECTION C-C

△5	0.002032 [.000080] MIN TIN	△6	60249-5
	0.000381 [.000015] THK SILVER		60249-3
	TIN		60249-2
	-		60249-1
	FINISH		PART NO

THIS DRAWING IS A CONTROLLED DOCUMENT.		DWN	JR RUTH	7/14/95	STE TE Connectivity		
DIMENSIONS: INCHES		CHK	MS FEHER	7/14/95			
TOLERANCES UNLESS OTHERWISE SPECIFIED:		APVD	J GILLESPIE	7/14/95	NAME		
0 PLC ± -		PRODUCT SPEC		RECEPTACLE, FASTIN-FASTON, 6.35 [.250] SERIES			
1 PLC ± -		APPLICATION SPEC		SIZE			
2 PLC ± 0.38 [.015]		114-2025		CAGE CODE			
3 PLC ± -		WEIGHT		DRAWING NO			
4 PLC ± -		-		A300779			
ANGLES ± -		CUSTOMER DRAWING		G-60249			
FINISH		SEE TABLE		RESTRICTED TO			
BRASS		SCALE		SHEET			
		5:1		1 OF 1			
		REV		G			