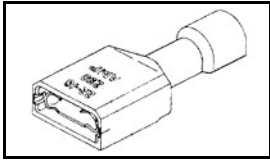


3-350820-2 Product Details

[Share](#) [Print](#) [Email](#)




3-350820-2

TE Internal Number: 3-350820-2

 Active

[View 3D PDF](#)

Ultra-Fast Receptacles & Tabs

 Always EU RoHS/ELV Compliant
(Statement of Compliance)

Product Highlights:

- Terminal Type = Receptacle
- Proprietary Name = Ultra-Fast
- Receptacle Style = Straight
- Mating Area Interface Dimensions = 6.35 x 0.81 mm
- Brass Material

[View all Features](#)

Quick Links

- ▶ [Pricing & Availability](#)
- ▶ [Search for Tooling](#)
- ▶ [Product Feature Selector](#)
- ▶ [Contact Us About This Product](#)

[Add to My Part List](#) [Request Sample](#) [Find Similar Products](#)
[Buy Product](#)

Documentation & Additional Information

Product Drawings:

- [RECEPTACLE ASSY,ULTRA-FAST, LOOSE PIECE,..250 SERIES,..](#) (PDF, English)

Catalog Pages/Data Sheets:

- [Ultra-Fast and Ultra Fast Plus](#) (PDF, English)

Product Specifications:

- [Ultra-Fast Fully Insulated FASTON Receptacle Terminals](#) (PDF, English)

Application Specifications:

- None Available

Instruction Sheets:

- None Available

CAD Files: (CAD Format & Compression Information)

- [2D Drawing](#) (DXF, Version P)
- [3D Model](#) (IGES, Version P)
- [3D Model](#) (STEP, Version P)

[List all Documents](#)

Additional Information:

- [Product Line Information](#)

Related Products:

- [Tooling](#)

Product Features (Please use the Product Drawing for all design activity)

Product Type Features:

- Terminal Type = Receptacle
- Receptacle Style = Straight
- Insulation Support = Non-Insulation Support
- Finish = Tin

Dimensions:

- Mating Area Interface Dimensions (mm [in]) = 6.35 x 0.81 [.250 x .032]
- Insulation Diameter (mm [in]) = 4.06 [.160] Max.

Body Features:

- Material = Brass
- Wire Range (mm [AWG]) = 1.25-2.00² [16-14]
- Fully Insulated = Yes

Housing Features:

- UL Flammability Rating = UL 94V-2

Industry Standards:

- [RoHS/ELV Compliance](#) = RoHS compliant, ELV compliant
- [Lead Free Solder Processes](#) = Not relevant for lead free process
- [RoHS/ELV Compliance History](#) = Always was RoHS compliant

Packaging Features:

- [Packaging Method](#) = Loose Piece

Other:

- [Proprietary Name](#) = Ultra-Fast
- Brand = AMP

THIS DRAWING IS UNPUBLISHED.

RELEASED FOR PUBLICATION

ALL RIGHTS RESERVED.

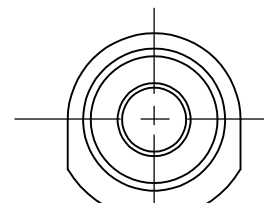
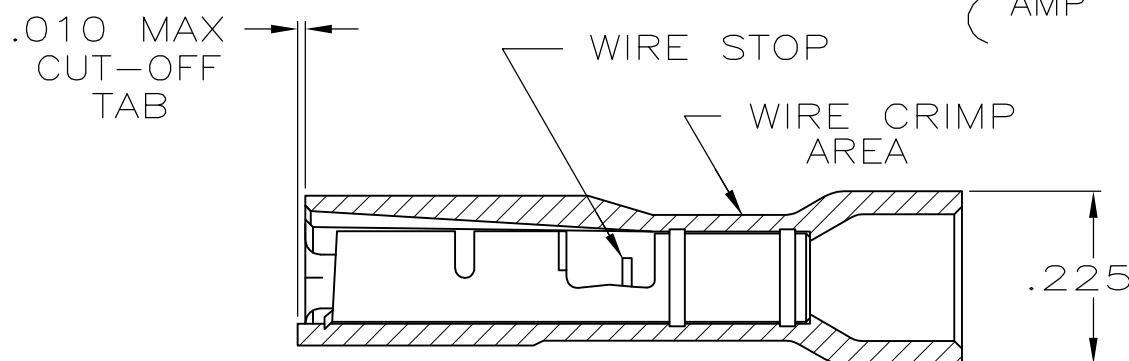
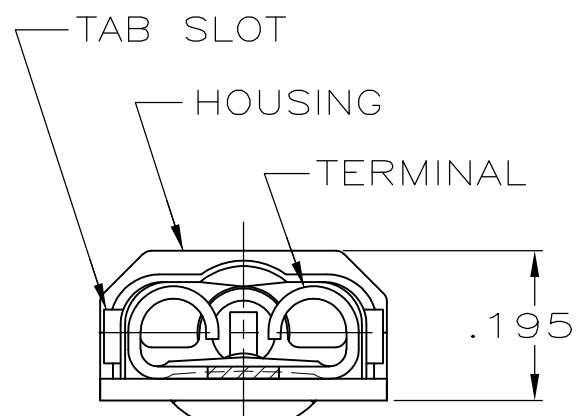
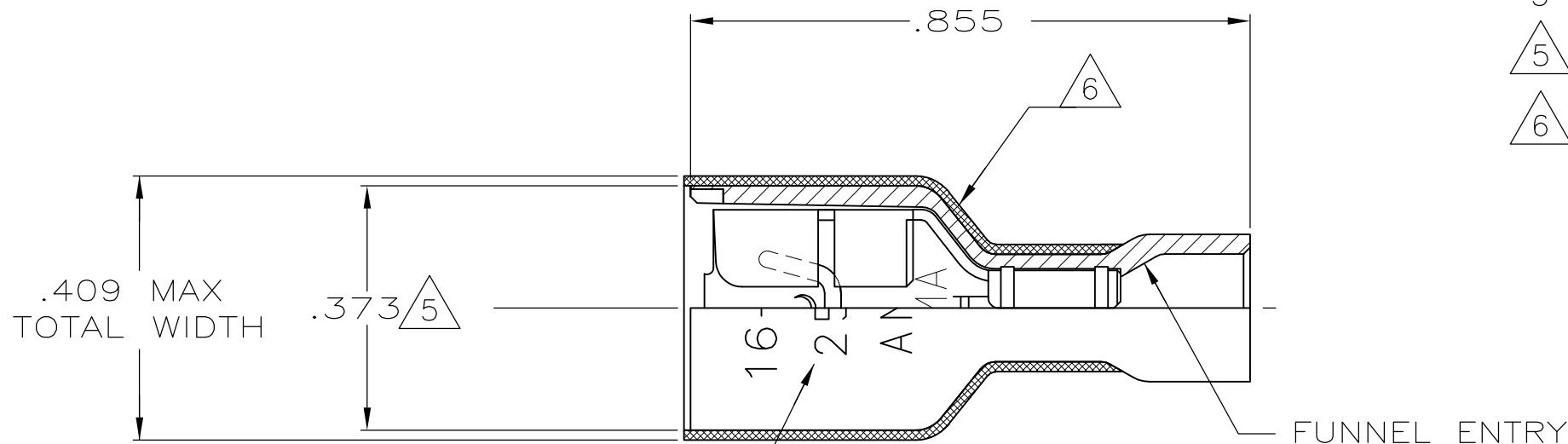
© COPYRIGHT - By -

LOC AF DIST 50

REVISIONS

P	LTR	DESCRIPTION	DATE	DWN	APVD
S		REVISED PER ECR-13-004343	30JUL13	KH	KR

- 1 MATES WITH .032±.001x.250 TAB
- 2 WIRE STRIP LENGTH .281
- 3 INSULATION SIZE .160 MAX DIA
- △5 DIMENSION DOES NOT INCLUDE TRIM BURR
- △6 .015 MAX CARRIER TRIM BURR PER SIDE IS ALLOWABLE IN THE SHADED AREA



HOUSING: NYLON, COLOR-BLUE TRANSLUCENT
 RECEPTACLE: BRASS TIN

3-350820-2

MATERIAL & FINISH

PART NO

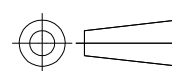
THIS DRAWING IS A CONTROLLED DOCUMENT.

DWN P FORTNEY 10/5/88
 CHK JR RUTH 10/6/88
 APVD KA RANDOLPH 10/6/88



DIMENSIONS: INCHES

TOLERANCES UNLESS OTHERWISE SPECIFIED:



0 PLC	± -
1 PLC	± -
2 PLC	± -
3 PLC	± .015
4 PLC	± -
ANGLES	± -

MATERIAL SEE TABLE

FINISH SEE TABLE

108-2043

114-2123

WEIGHT -

NAME RECEPTACLE ASSY, ULTRA-FAST,
 LOOSE PIECE, .250 SERIES, 16-14 AWG

SIZE	CAGE CODE	DRAWING NO	RESTRICTED TO
A3	00779	C-350820	-

CUSTOMER DRAWING

SCALE 4:1

SHEET 1 OF 1

REV S