

Distributed by:

JAMECO[®]
ELECTRONICS

www.Jameco.com ♦ 1-800-831-4242

The content and copyrights of the attached
material are the property of its owner.

Jameco Part Number 922831

14 Series

■ Ratings and Characteristics

- Operating Temperature Range : -40 to 85 °C
- Storage Temperature Range : -40 to 125 °C
- Temperature Coefficient of Varistor Voltage : 0 to -0.05 %/°C

ERZV14D180 to ERZV14D680

Part No.	Varistor Voltage	Maximum Allowable Voltage		Clamping Voltage (max.)	Rated Power	Maximum Energy		Maximum Peak Current (8/20 μs)		Capacitance (max.) @1 kHz (pF)
						(10/1000 μs)	(2 ms)	1 time	2 times	
						V _{1mA} (V)	ACrms (V)	DC (V)	V _{10A} (V)	
ERZV14D180	18 (16-20)	11	14	36	0.1	5.2	4.3	2000	1000	25000
ERZV14D220	22 (20-24)	14	18	43	0.1	6.3	5.3	2000	1000	20000
ERZV14D270	27 (24-30)	17	22	53	0.1	7.8	6.5	2000	1000	16000
ERZV14D330	33 (30-36)	20	26	65	0.1	9.5	7.9	2000	1000	12200
ERZV14D390	39 (35-43)	25	31	77	0.1	11	9.4	2000	1000	7000
ERZV14D470	47 (42-52)	30	38	93	0.1	14	11	2000	1000	6750
ERZV14D560	56 (50-62)	35	45	110	0.1	16	13	2000	1000	6500
ERZV14D680	68 (61-75)	40	56	135	0.1	20	16	2000	1000	5500

ERZV14D820 to ERZV14D182CS

Part No.	Varistor Voltage	Maximum Allowable Voltage		Clamping Voltage (max.)	Rated Power	Maximum Energy		Maximum Peak Current (8/20 μs)		Capacitance (max.) @1 kHz (pF)
						(10/1000 μs)	(2 ms)	1 time	2 times	
						V _{1mA} (V)	ACrms (V)	DC (V)	V _{50A} (V)	
ERZV14D820	82(74- 90)	50	65	135	0.6	28	20	6000	5000	3700
ERZV14D101	100(90- 110)	60	85	165	0.6	35	25	6000	5000	3200
ERZV14D121	120(108- 132)	75	100	200	0.6	42	30	6000	5000	2700
ERZV14D151	150(135- 165)	95	125	250	0.6	53	37.5	6000	5000	2200
ERZV14D201	200(185- 225)	130	170	340	0.6	70	50	6000	5000	770
ERZV14D221	220(198- 242)	140	180	360	0.6	78	55	6000	5000	740
ERZV14D241	240(216- 264)	150	200	395	0.6	84	60	6000	5000	700
ERZV14D271	270(247- 303)	175	225	455	0.6	99	70	6000	5000	640
ERZV14D331	330(297- 363)	210	270	545	0.6	115	80	6000	4500	580
ERZV14D361	360(324- 396)	230	300	595	0.6	130	90	6000	4500	540
ERZV14D391	390(351- 429)	250	320	650	0.6	140	100	6000	4500	500
ERZV14D431	430(387- 473)	275	350	710	0.6	155	110	6000	4500	450
ERZV14D471	470(423- 517)	300	385	775	0.6	175	125	6000	4500	400
ERZV14D511	510(459- 561)	320	410	845	0.6	190	136	6000	4500	350
ERZV14D621	620(558- 682)	385	505	1025	0.6	190	136	5000	4500	330
ERZV14D681	680(612- 748)	420	560	1120	0.6	190	136	5000	4500	320
ERZV14D751	750(675- 825)	460	615	1240	0.6	210	150	5000	4500	310
ERZV14D821	820(738- 902)	510	670	1355	0.6	235	165	5000	4500	280
ERZV14D911	910(819-1001)	550	745	1500	0.6	255	180	5000	4500	250
ERZV14D102	1000(900-1100)	625	825	1650	0.6	280	200	5000	4500	230
ERZV14D112	1100(990-1210)	680	895	1815	0.6	310	220	5000	4500	210
ERZV14D182CS	1800(1700-1980)	1000	1465	2970	0.6	510	360	5000	4500	120

■ Dimensions in mm (not to scale) * Refer to page 35 to 37 about leads cut type and taping.

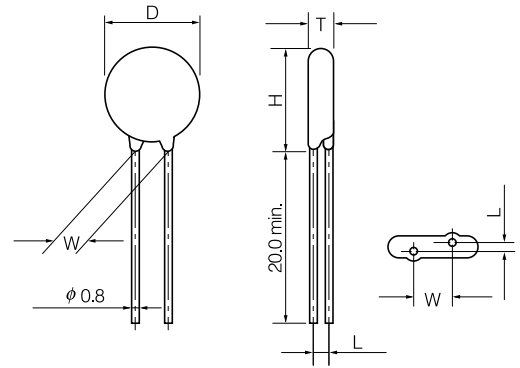
ERZV14D180 to ERZV14D680

Part No.	D max.	T max.	W	H max.	L
ERZV14D180	15.5	4.6	7.5±1.0	18.5	1.3±1.0
ERZV14D220	15.5	4.7	7.5±1.0	18.5	1.4±1.0
ERZV14D270	15.5	4.8	7.5±1.0	18.5	1.5±1.0
ERZV14D330	15.5	5.0	7.5±1.0	18.5	1.7±1.0
ERZV14D390	15.5	4.9	7.5±1.0	18.5	1.6±1.0
ERZV14D470	15.5	5.0	7.5±1.0	18.5	1.7±1.0
ERZV14D560	15.5	5.1	7.5±1.0	18.5	1.8±1.0
ERZV14D680	15.5	5.3	7.5±1.0	18.5	2.0±1.0

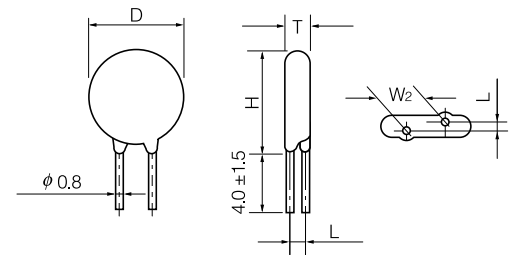
ERZV14D820 to ERZV14D182CS

Part No.	D max.	T max.	W	H max.	L
ERZV14D820	15.5	4.5	7.5±1.0	18.5	1.6±1.0
ERZV14D101	15.5	4.7	7.5±1.0	18.5	1.8±1.0
ERZV14D121	15.5	4.9	7.5±1.0	18.5	2.0±1.0
ERZV14D151	15.5	5.2	7.5±1.0	18.5	2.3±1.0
ERZV14D201	15.5	4.8	7.5±1.0	18.5	1.9±1.0
ERZV14D221	15.5	4.9	7.5±1.0	18.5	2.0±1.0
ERZV14D241	15.5	5.0	7.5±1.0	18.5	2.1±1.0
ERZV14D271	15.5	5.2	7.5±1.0	18.5	2.3±1.0
ERZV14D331	15.5	5.5	7.5±1.0	18.5	2.6±1.0
ERZV14D361	15.5	5.7	7.5±1.0	18.5	2.8±1.0
ERZV14D391	15.5	5.8	7.5±1.0	18.5	2.9±1.0
ERZV14D431	15.5	6.0	7.5±1.0	18.5	3.1±1.0
ERZV14D471	15.5	6.2	7.5±1.0	18.5	3.3±1.0
ERZV14D511	15.5	6.4	7.5±1.0	18.5	3.5±1.0
ERZV14D621	16.0	7.1	7.5±1.0	19.0	4.2±1.0
ERZV14D681	16.0	7.4	7.5±1.0	19.0	4.5±1.0
ERZV14D751	16.0	7.8	7.5±1.0	19.0	4.9±1.0
ERZV14D821	16.0	8.1	7.5±1.0	19.0	5.2±1.0
ERZV14D911	16.0	8.6	7.5±1.0	19.0	5.7±1.0
ERZV14D102	16.0	9.1	7.5±1.0	19.0	6.2±1.0
ERZV14D112	16.0	9.7	7.5±1.0	19.0	6.8±1.0
ERZV14D182CS	17.0	14.4	15.0±1.0*	20.5	10.5±2.0

*: W₂



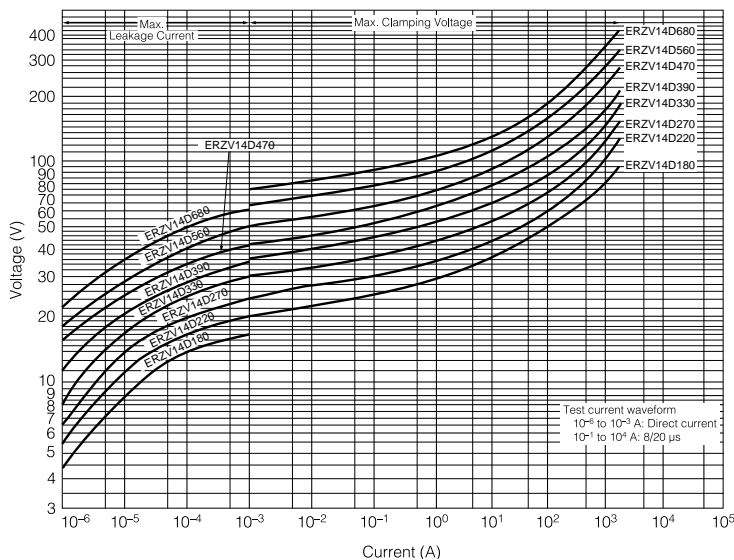
(ERZV14D182CS)



■ Typical Characteristics

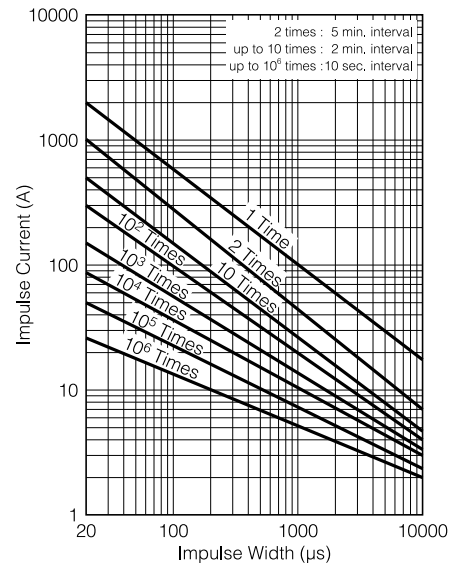
Voltage vs. Current

(ERZV14D180 to ERZV14D680)



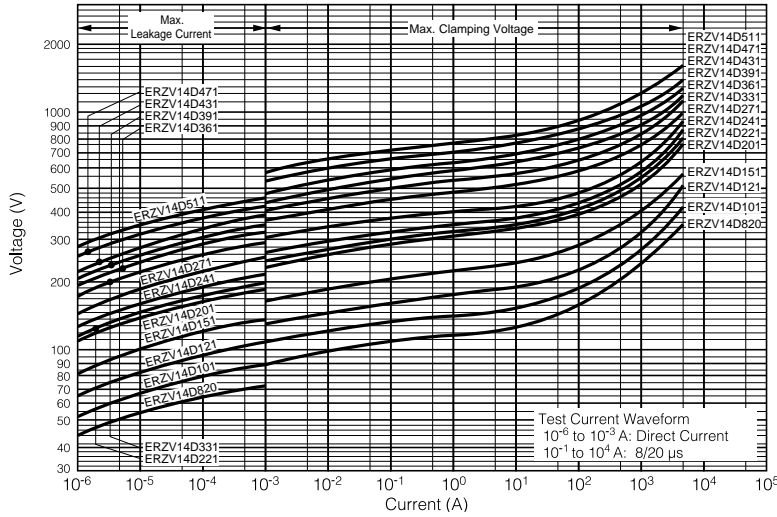
Impulse Derating (Relation between impulse width and impulse repetition times)

(ERZV14D180 to ERZV14D680)



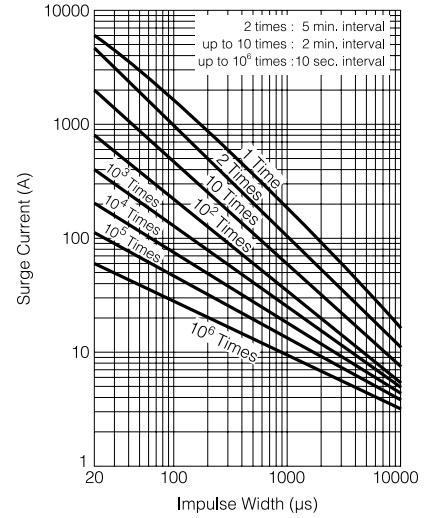
Typical Characteristics Voltage vs. Current

(ERZV14D820 to ERZV14D511)

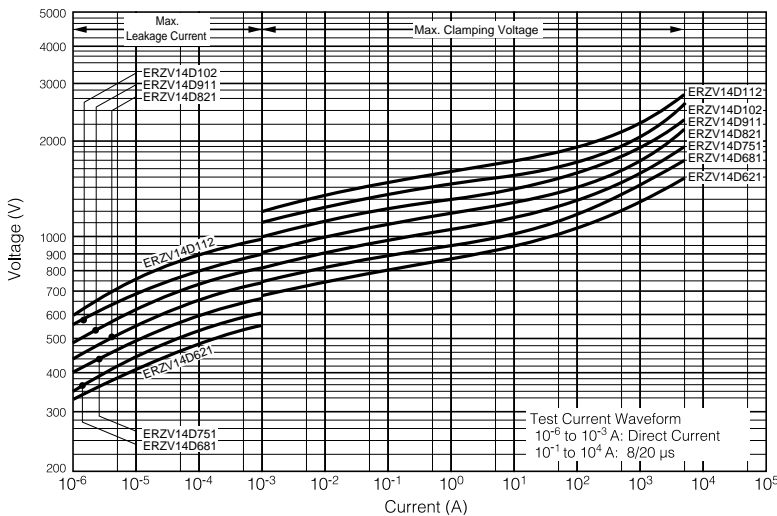


Impulse Derating (Relation between impulse width and impulse repetition times)

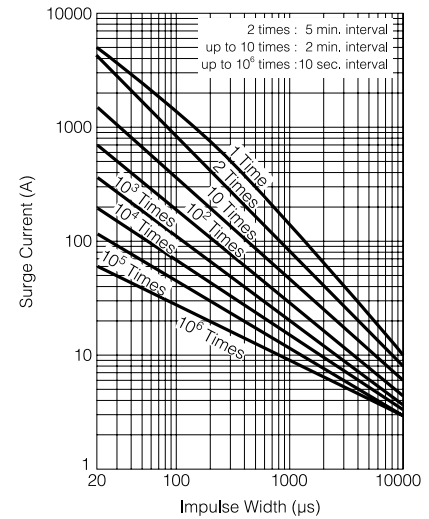
(ERZV14D820 to ERZV14D511)



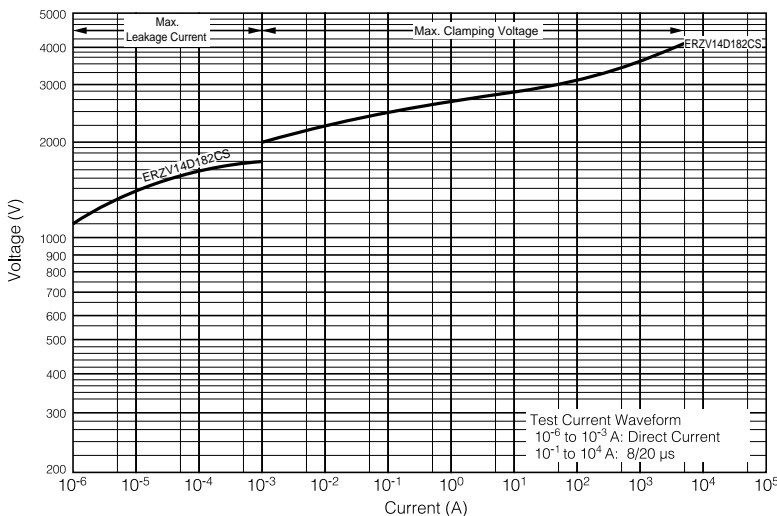
(ERZV14D621 to ERZV14D112)



(ERZV14D621 to ERZV14D112)



(ERZV14D182CS)



(ERZV14D182CS)

