

Distributed by:

**JAMECO**<sup>®</sup>  
ELECTRONICS

**www.Jameco.com ♦ 1-800-831-4242**

The content and copyrights of the attached  
material are the property of its owner.

Jameco Part Number 1969796

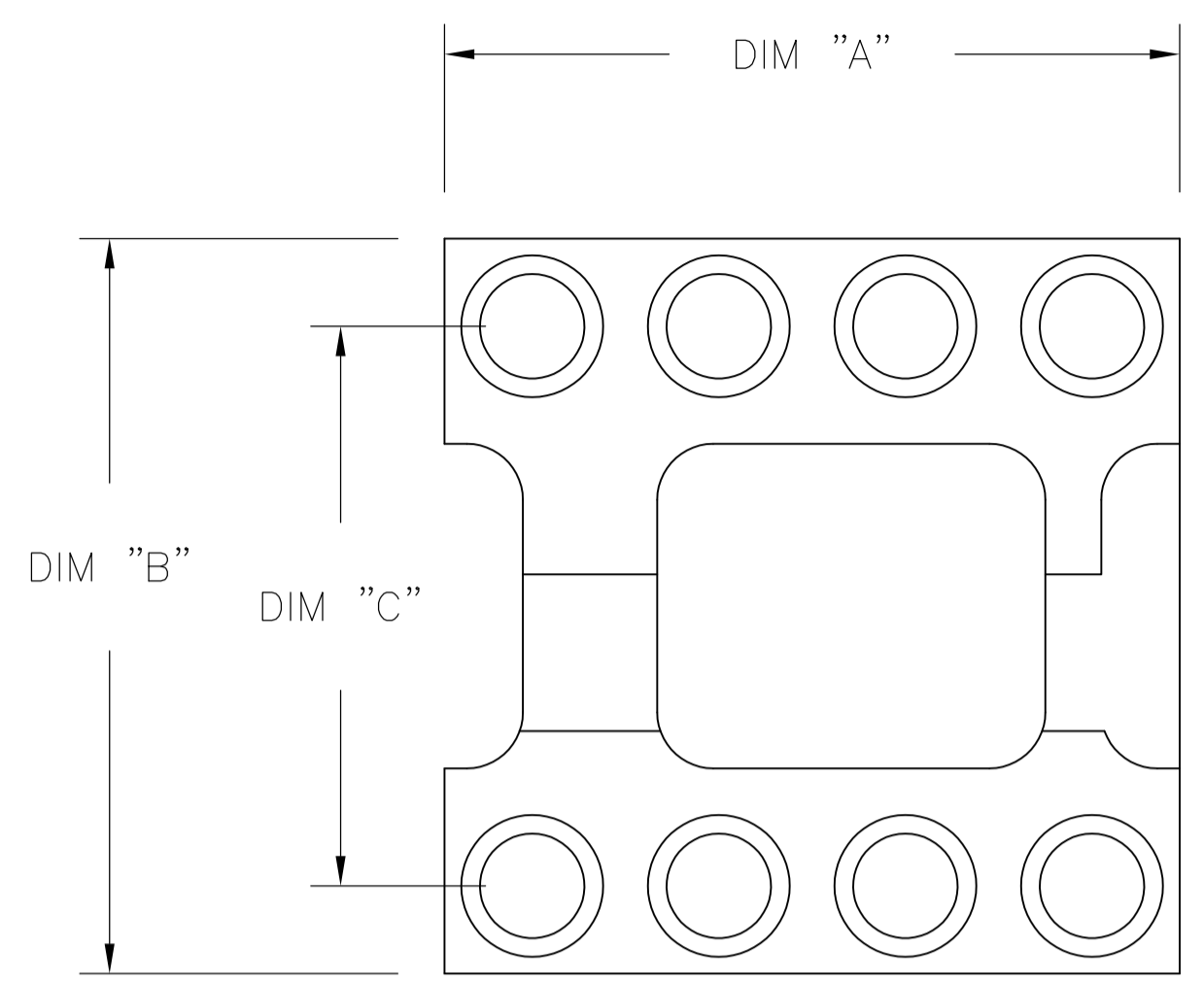


FIG. 1

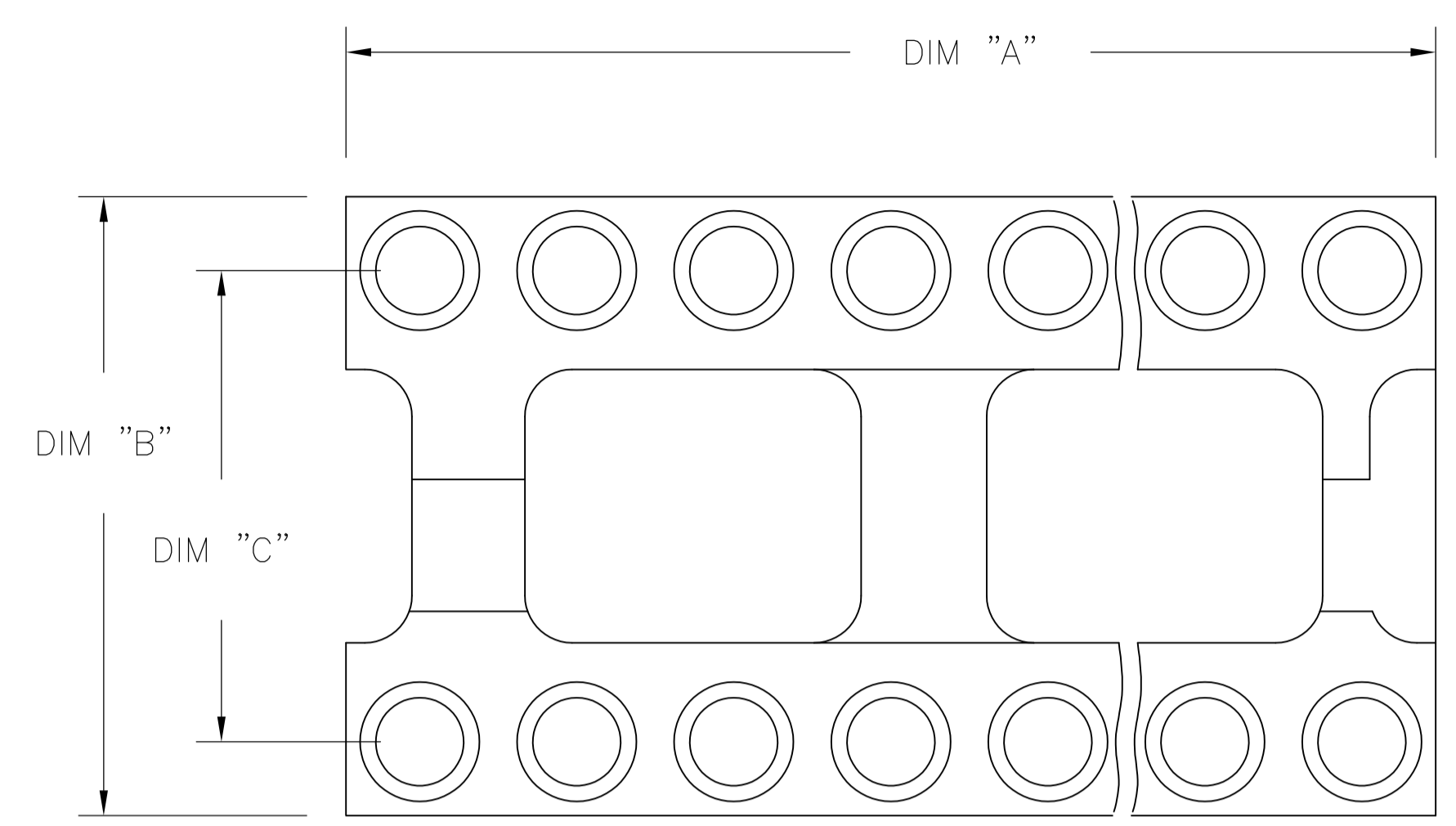


FIG. 2

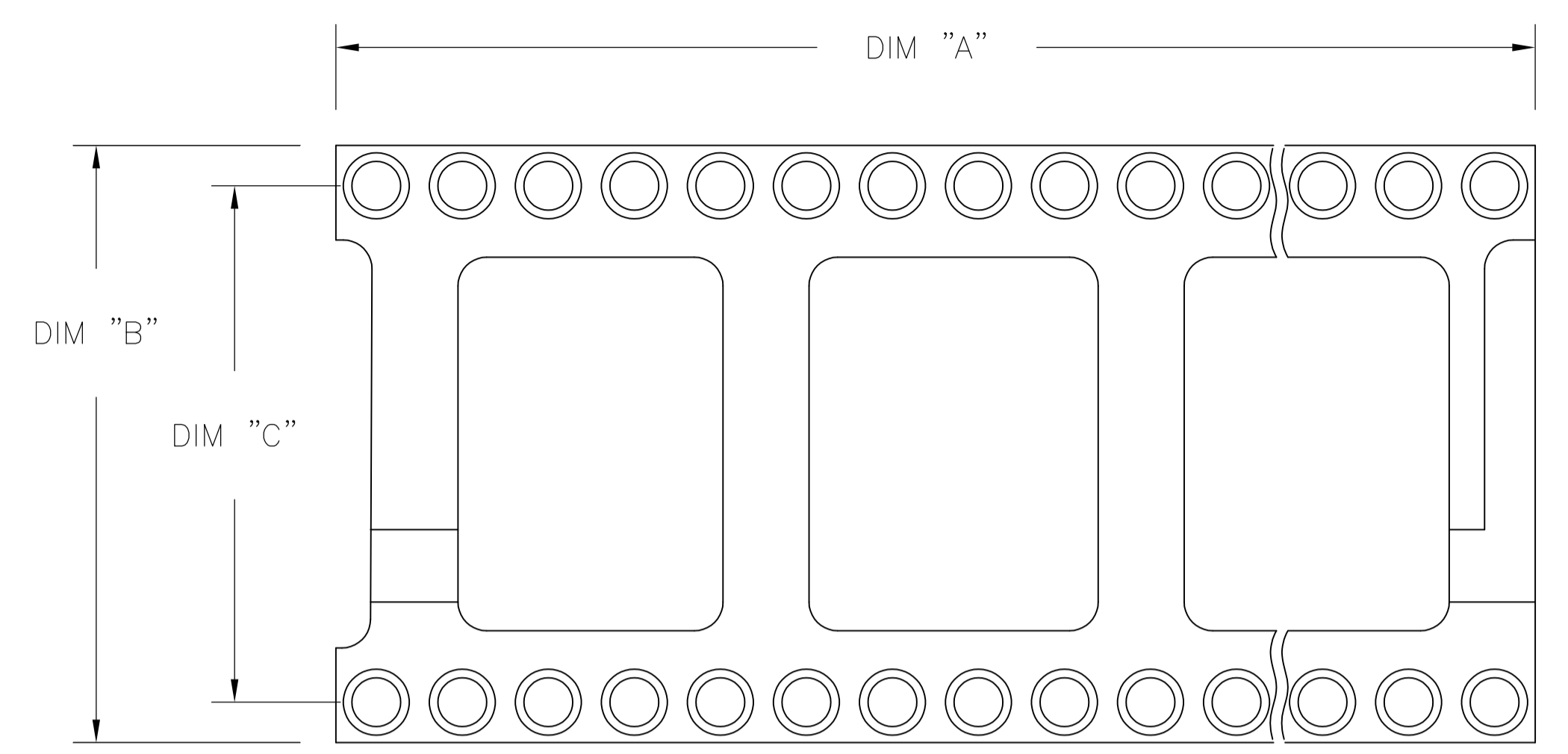
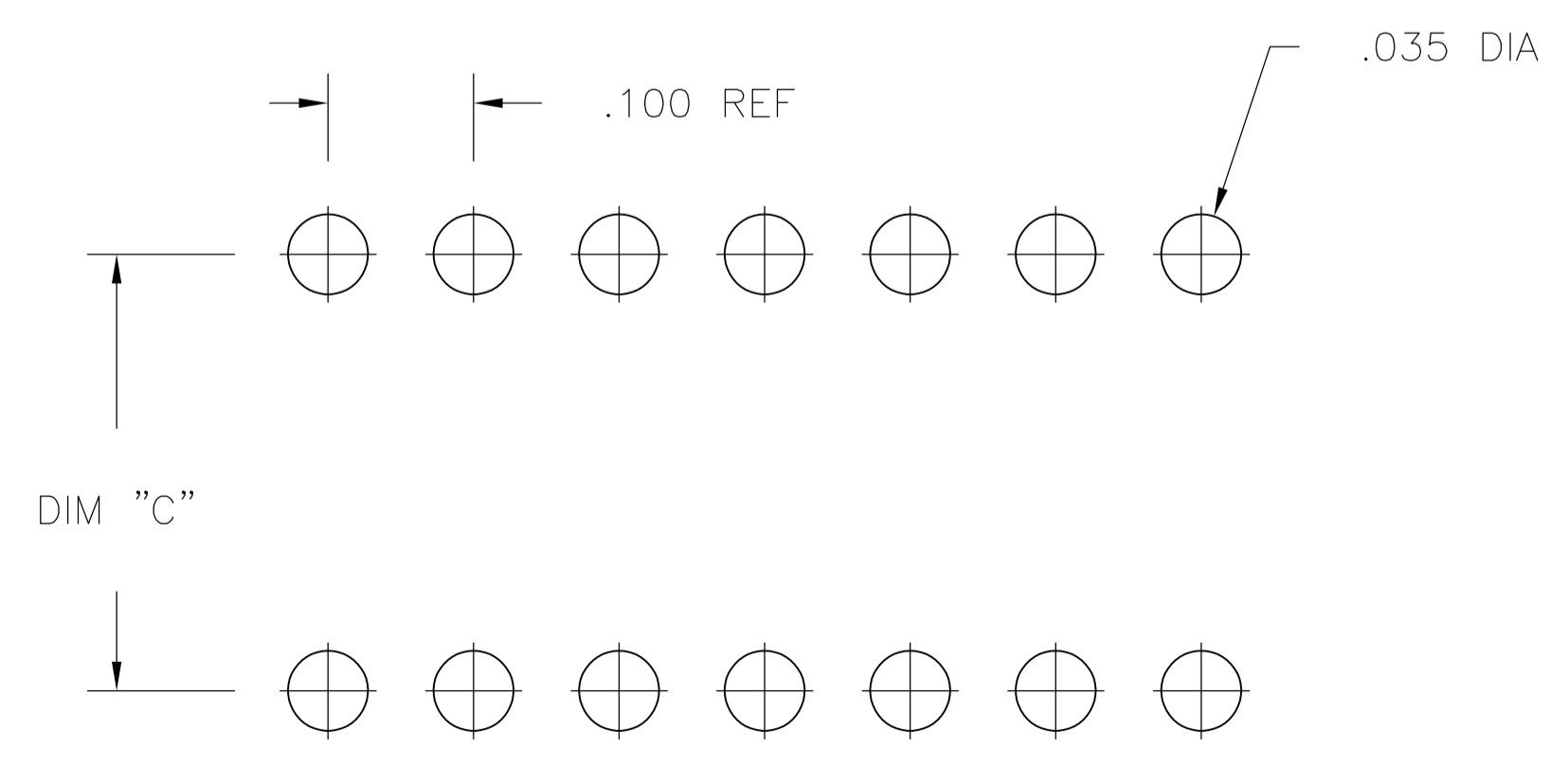
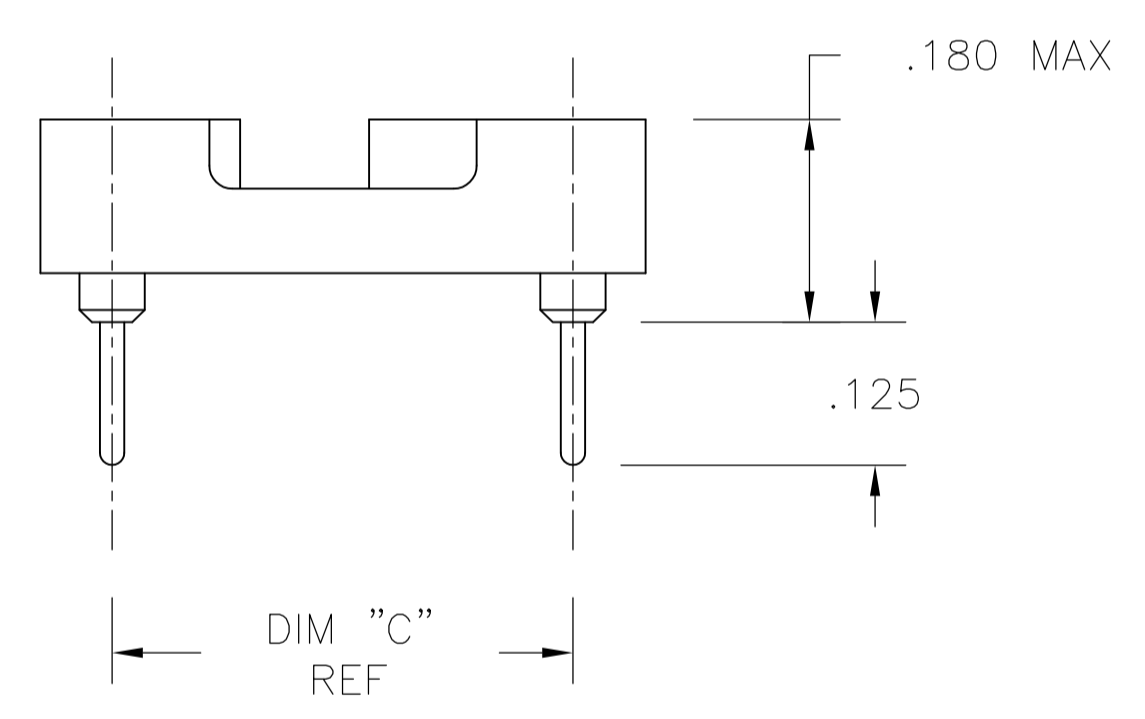
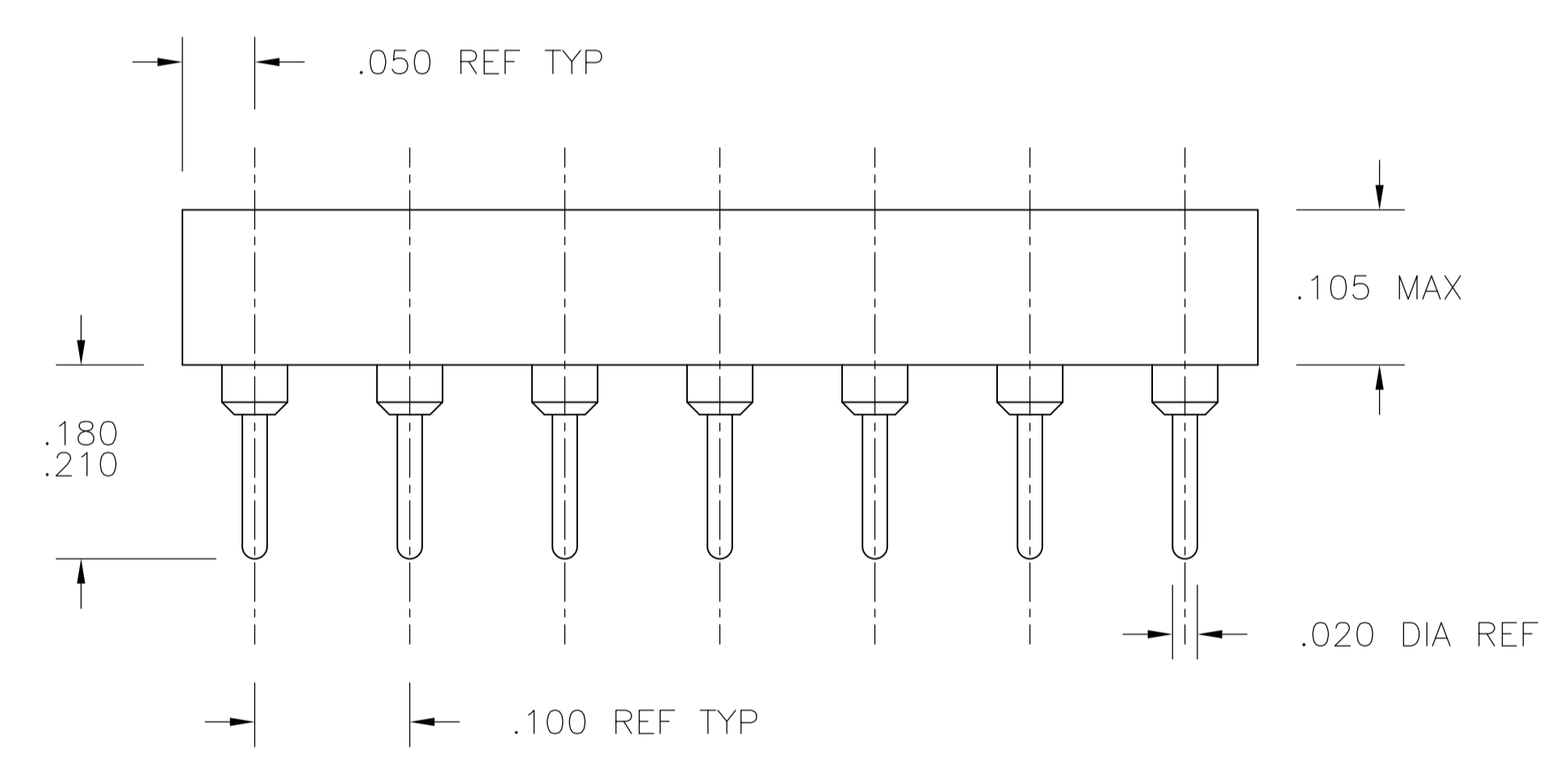


FIG. 3



1. INSULATOR MATERIAL - THERMOPLASTIC POLYESTER, PCT, BLACK, UL94 V-0
2. STAMPED CONTACT - BECU, PLATED WITH 80-200μ" TIN (LEAD FREE) OVER 75-100μ" COPPER.
3. SLEEVE - COPPER, PLATED WITH 180-340μ" THK TIN (LEAD FREE) OVER 75-125μ" MIN NICKEL.
5. STAMPED CONTACT-BECU, PLATED WITH GOLD FLASH OVER 50-100μ" NICKEL
6. STAMPED CONTACT-BECU, PLATED WITH 20μ" MIN GOLD OVER 30-100μ" NICKEL.
7. ELECTRICAL:  
 CONTACT RESISTANCE: 10 MILLIOHMS MAX  
 CONTACT RATING: 3 AMPS  
 CAPACITANCE: 1.0 pF PER MIL-STD-202, METHOD 305  
 INSULATION RESISTANCE: 5000 OHMS MIN @ 500 VDC PER MIL-STD-1344, METHOD 3003.1  
 DIELECTRIC WITHSTANDING VOLTAGE: 1000 VOLTS (RMS) PER MIL-STD-1344, METHOD 3001.1
8. MECHANICAL:  
 INSERTION FORCE: 179 GRAMS AVG  
 WITHDRAWAL FORCE: 63 GRAMS AVG  
 "ACCEPTS IC PIN - .009"X.015" THROUGH .011"X.020", OR .016" TO .021" DIAMETER, .150/.105 LONG"
9. ENVIRONMENTAL:  
 OPERATING TEMPERATURE: -55°C TO +105°C

P.C.B. HOLE LAYOUT  
TOLERANCE ±.003

|  |  |  |         |   |  |
|--|--|--|---------|---|--|
| THIS DRAWING IS A CONTROLLED DOCUMENT. |  | DIN: BSV                               | 27JUL04 | Tyco Electronics Corporation<br>Harrisburg, Pa 17105-3608 |  |
| DIMENSIONS: INCHES                     |  | TOLERANCES UNLESS OTHERWISE SPECIFIED: |         | NAME: K. WRIGHT   |  |
| 0. PLC ± -                             |  | 1. PLC ± -                             |         | PRODUCT SPEC: -   |  |
| 1. PLC ± -                             |  | 2. PLC ± -                             |         | APPLICATION SPEC: -                                       |  |
| 2. PLC ± -                             |  | 3. PLC ± .005                          |         | SIZE: A1  |  |
| 3. PLC ± -                             |  | 4. PLC ± -                             |         | CAGE CODE: 00779  |  |
| 4. PLC ± -                             |  | ANGLES ± -                             |         | DRAWING NO: 1571552                                       |  |
| MATERIAL: SEE NOTES                    |  | FINISH: SEE NOTES                      |         | RESTRICTED TO: -  |  |
| CUSTOMER DRAWING                       |  | SCALE: 4:1                             |         | SHEET 1 OF 2  |  |
|  |  |  |         | REV: E2   |  |

|                               |          |           |       |       |   |    |             |
|-------------------------------|----------|-----------|-------|-------|---|----|-------------|
| △ <sub>3</sub> △ <sub>6</sub> | GOLD/TIN | .400±.005 | .500  | 1.200 | 2 | 24 | 5-1571552-7 |
| △ <sub>3</sub> △ <sub>6</sub> | GOLD/TIN | .300±.005 | .400  | 1.200 | 2 | 24 | 5-1571552-6 |
| △ <sub>3</sub> △ <sub>6</sub> | GOLD/TIN | .900±.005 | 1.000 | 3.200 | 3 | 64 | 5-1571552-5 |
| △ <sub>3</sub> △ <sub>6</sub> | GOLD/TIN | .600±.005 | .700  | 2.400 | 3 | 48 | 5-1571552-4 |
| △ <sub>3</sub> △ <sub>6</sub> | GOLD/TIN | .600±.005 | .700  | 2.100 | 3 | 42 | 5-1571552-3 |
| △ <sub>3</sub> △ <sub>6</sub> | GOLD/TIN | .600±.005 | .700  | 2.000 | 3 | 40 | 5-1571552-2 |
| △ <sub>3</sub> △ <sub>6</sub> | GOLD/TIN | .600±.005 | .700  | 1.800 | 3 | 36 | 5-1571552-1 |
| △ <sub>3</sub> △ <sub>6</sub> | GOLD/TIN | .600±.005 | .700  | 1.600 | 3 | 32 | 5-1571552-0 |
| △ <sub>3</sub> △ <sub>6</sub> | GOLD/TIN | .600±.005 | .700  | 1.400 | 2 | 28 | 4-1571552-9 |
| △ <sub>3</sub> △ <sub>6</sub> | GOLD/TIN | .600±.005 | .700  | 1.200 | 2 | 24 | 4-1571552-8 |
| △ <sub>3</sub> △ <sub>6</sub> | GOLD/TIN | .400±.005 | .500  | 1.100 | 2 | 22 | 4-1571552-7 |
| △ <sub>3</sub> △ <sub>6</sub> | GOLD/TIN | .300±.005 | .400  | 1.000 | 2 | 20 | 4-1571552-6 |
| △ <sub>3</sub> △ <sub>6</sub> | GOLD/TIN | .300±.005 | .400  | .900  | 2 | 18 | 4-1571552-5 |
| △ <sub>3</sub> △ <sub>6</sub> | GOLD/TIN | .300±.005 | .400  | .800  | 2 | 16 | 4-1571552-4 |
| △ <sub>3</sub> △ <sub>6</sub> | GOLD/TIN | .300±.005 | .400  | .400  | 1 | 8  | 4-1571552-3 |
| △ <sub>3</sub> △ <sub>6</sub> | GOLD/TIN | .300±.005 | .400  | .700  | 2 | 14 | 4-1571552-2 |
| △ <sub>3</sub> △ <sub>5</sub> | G F/TIN  | .400±.005 | .500  | 1.200 | 2 | 24 | 3-1571552-7 |
| △ <sub>3</sub> △ <sub>5</sub> | G F/TIN  | .300±.005 | .400  | 1.200 | 2 | 24 | 3-1571552-6 |
| △ <sub>3</sub> △ <sub>5</sub> | G F/TIN  | .900±.005 | 1.000 | 3.200 | 3 | 64 | 3-1571552-5 |
| △ <sub>3</sub> △ <sub>5</sub> | G F/TIN  | .600±.005 | .700  | 2.400 | 3 | 48 | 3-1571552-4 |
| △ <sub>3</sub> △ <sub>5</sub> | G F/TIN  | .600±.005 | .700  | 2.100 | 3 | 42 | 3-1571552-3 |
| △ <sub>3</sub> △ <sub>5</sub> | G F/TIN  | .600±.005 | .700  | 2.000 | 3 | 40 | 3-1571552-2 |
| △ <sub>3</sub> △ <sub>5</sub> | G F/TIN  | .600±.005 | .700  | 1.800 | 3 | 36 | 3-1571552-1 |
| △ <sub>3</sub> △ <sub>5</sub> | G F/TIN  | .600±.005 | .700  | 1.600 | 3 | 32 | 3-1571552-0 |
| △ <sub>3</sub> △ <sub>5</sub> | G F/TIN  | .600±.005 | .700  | 1.400 | 2 | 28 | 2-1571552-9 |
| △ <sub>3</sub> △ <sub>5</sub> | G F/TIN  | .600±.005 | .700  | 1.200 | 2 | 24 | 2-1571552-8 |
| △ <sub>3</sub> △ <sub>5</sub> | G F/TIN  | .400±.005 | .500  | 1.100 | 2 | 22 | 2-1571552-7 |
| △ <sub>3</sub> △ <sub>5</sub> | G F/TIN  | .300±.005 | .400  | 1.000 | 2 | 20 | 2-1571552-6 |
| △ <sub>3</sub> △ <sub>5</sub> | G F/TIN  | .300±.005 | .400  | .900  | 2 | 18 | 2-1571552-5 |
| △ <sub>3</sub> △ <sub>5</sub> | G F/TIN  | .300±.005 | .400  | .800  | 2 | 16 | 2-1571552-4 |
| △ <sub>3</sub> △ <sub>5</sub> | G F/TIN  | .300±.005 | .400  | .700  | 2 | 14 | 2-1571552-3 |
| △ <sub>3</sub> △ <sub>5</sub> | G F/TIN  | .300±.005 | .400  | .400  | 1 | 8  | 2-1571552-2 |
| △ <sub>3</sub> △ <sub>2</sub> | TIN/TIN  | .400±.005 | .500  | 1.200 | 2 | 24 | 1-1571552-7 |
| △ <sub>3</sub> △ <sub>2</sub> | TIN/TIN  | .300±.005 | .400  | 1.200 | 2 | 24 | 1-1571552-6 |
| △ <sub>3</sub> △ <sub>2</sub> | TIN/TIN  | .900±.005 | 1.000 | 3.200 | 3 | 64 | 1-1571552-5 |
| △ <sub>3</sub> △ <sub>2</sub> | TIN/TIN  | .600±.005 | .700  | 2.400 | 3 | 48 | 1-1571552-4 |
| △ <sub>3</sub> △ <sub>2</sub> | TIN/TIN  | .600±.005 | .700  | 2.100 | 3 | 42 | 1-1571552-3 |
| △ <sub>3</sub> △ <sub>2</sub> | TIN/TIN  | .600±.005 | .700  | 2.000 | 3 | 40 | 1-1571552-2 |
| △ <sub>3</sub> △ <sub>2</sub> | TIN/TIN  | .600±.005 | .700  | 1.800 | 3 | 36 | 1-1571552-1 |
| △ <sub>3</sub> △ <sub>2</sub> | TIN/TIN  | .600±.005 | .700  | 1.600 | 3 | 32 | 1-1571552-0 |
| △ <sub>3</sub> △ <sub>2</sub> | TIN/TIN  | .600±.005 | .700  | 1.400 | 2 | 28 | 1571552-9   |
| △ <sub>3</sub> △ <sub>2</sub> | TIN/TIN  | .600±.005 | .700  | 1.200 | 2 | 24 | 1571552-8   |
| △ <sub>3</sub> △ <sub>2</sub> | TIN/TIN  | .400±.005 | .500  | 1.100 | 2 | 22 | 1571552-7   |
| △ <sub>3</sub> △ <sub>2</sub> | TIN/TIN  | .300±.005 | .400  | 1.000 | 2 | 20 | 1571552-6   |
| △ <sub>3</sub> △ <sub>2</sub> | TIN/TIN  | .300±.005 | .400  | .900  | 2 | 18 | 1571552-5   |
| △ <sub>3</sub> △ <sub>2</sub> | TIN/TIN  | .300±.005 | .400  | .800  | 2 | 16 | 1571552-4   |
| △ <sub>3</sub> △ <sub>2</sub> | TIN/TIN  | .300±.005 | .400  | .700  | 2 | 14 | 1571552-3   |
| △ <sub>3</sub> △ <sub>2</sub> | TIN/TIN  | .300±.005 | .400  | .400  | 1 | 8  | 1571552-2   |

| FINISH CONTACT/SLEEVE | "C" MAX | "B" MAX | "A" MAX | FIG | NO. OF POSN | PART NO. |
|-----------------------|---------|---------|---------|-----|-------------|----------|
|-----------------------|---------|---------|---------|-----|-------------|----------|

|  |  |                  |  |              |
|--|--|------------------|--|--------------|
| THIS DRAWING IS A CONTROLLED DOCUMENT. |  | DIN BSV 27JUL04  | Tyco Electronics Corporation<br>Harrisburg, Pa 17105-3608              |              |
| DIMENSIONS: INCHES                     | TOLERANCES UNLESS OTHERWISE SPECIFIED: | APVD K. WRIGHT   | NAME: OPEN FRAME DIP, ECONOMY (STAMPED CONTACT) (REF AUGAT 800 SERIES) |              |
| 0 PLC ± -                              | 1 PLC ± -                              | PRODUCT SPEC     | APPLICATION SPEC   |              |
| 2 PLC ± -                              | 3 PLC ± .005                           | SIZE             | CAGE CODE  | DRAWING NO   |
| 4 PLC ± -                              | ANGLES ± -                             | WEIGHT           | A1 00779   | 1571552      |
| MATERIAL SEE SHEET 1                   | FINISH SEE SHEET 1                     | CUSTOMER DRAWING | SCALE 1:1  | SHEET 2 OF 2 |