

Distributed by:

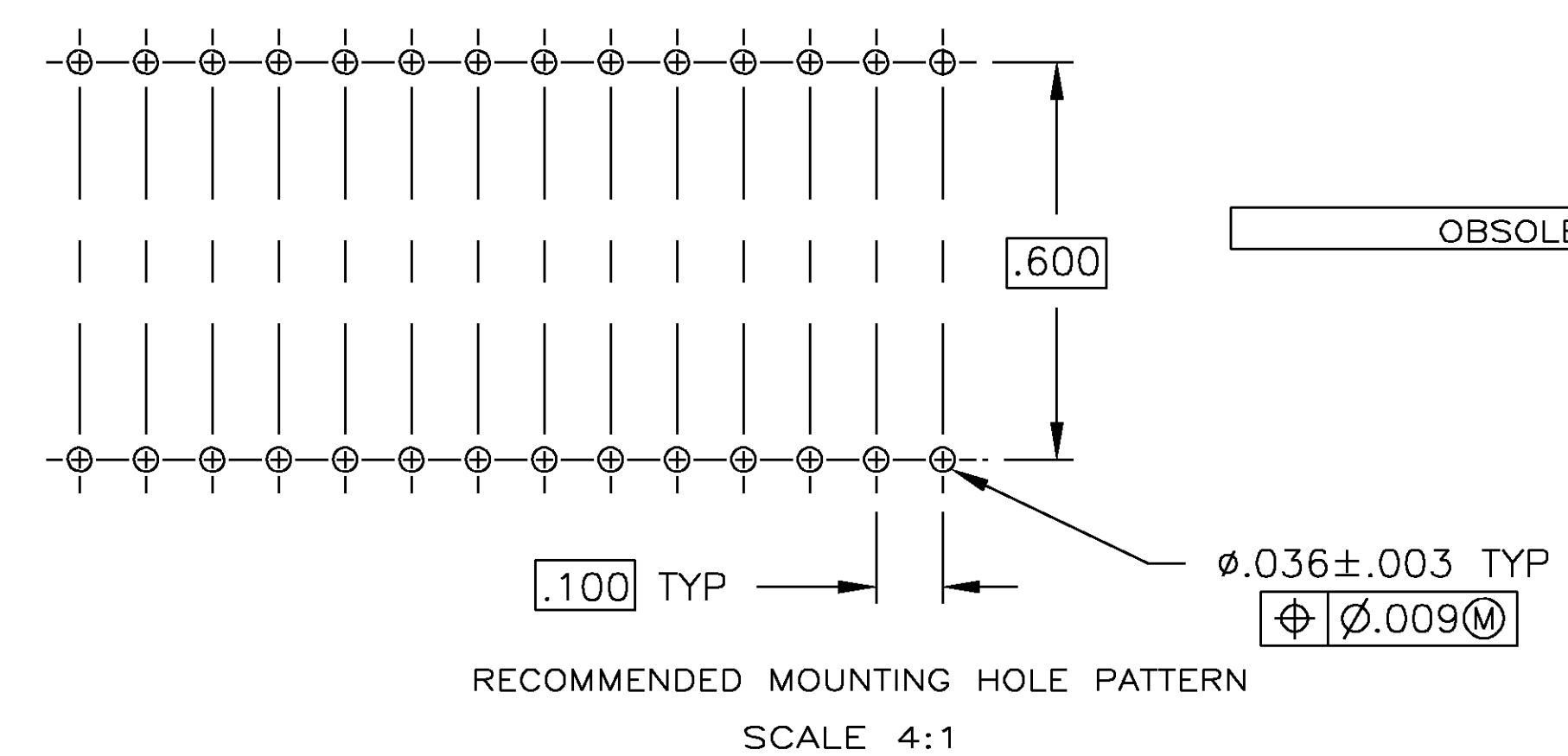
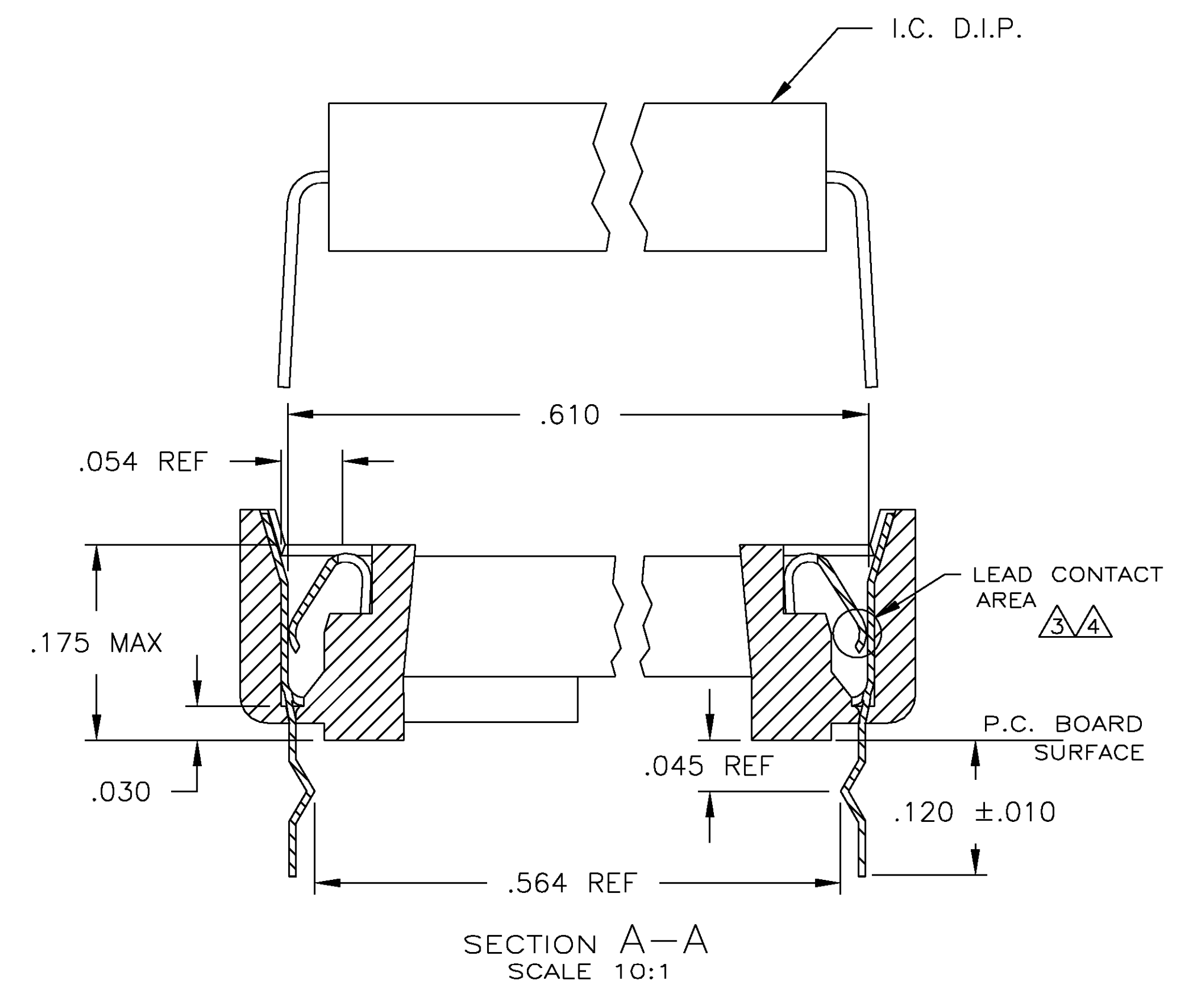
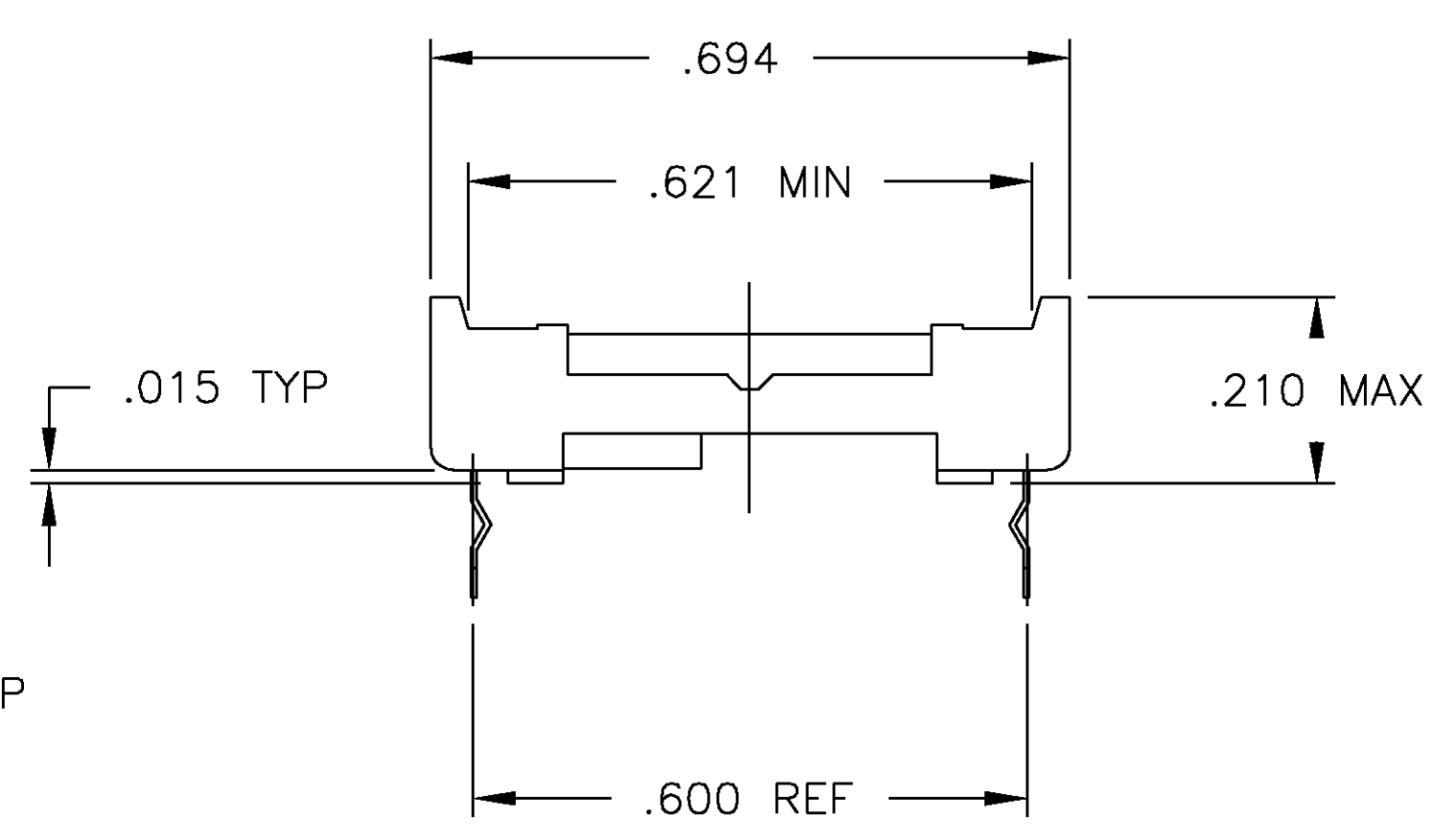
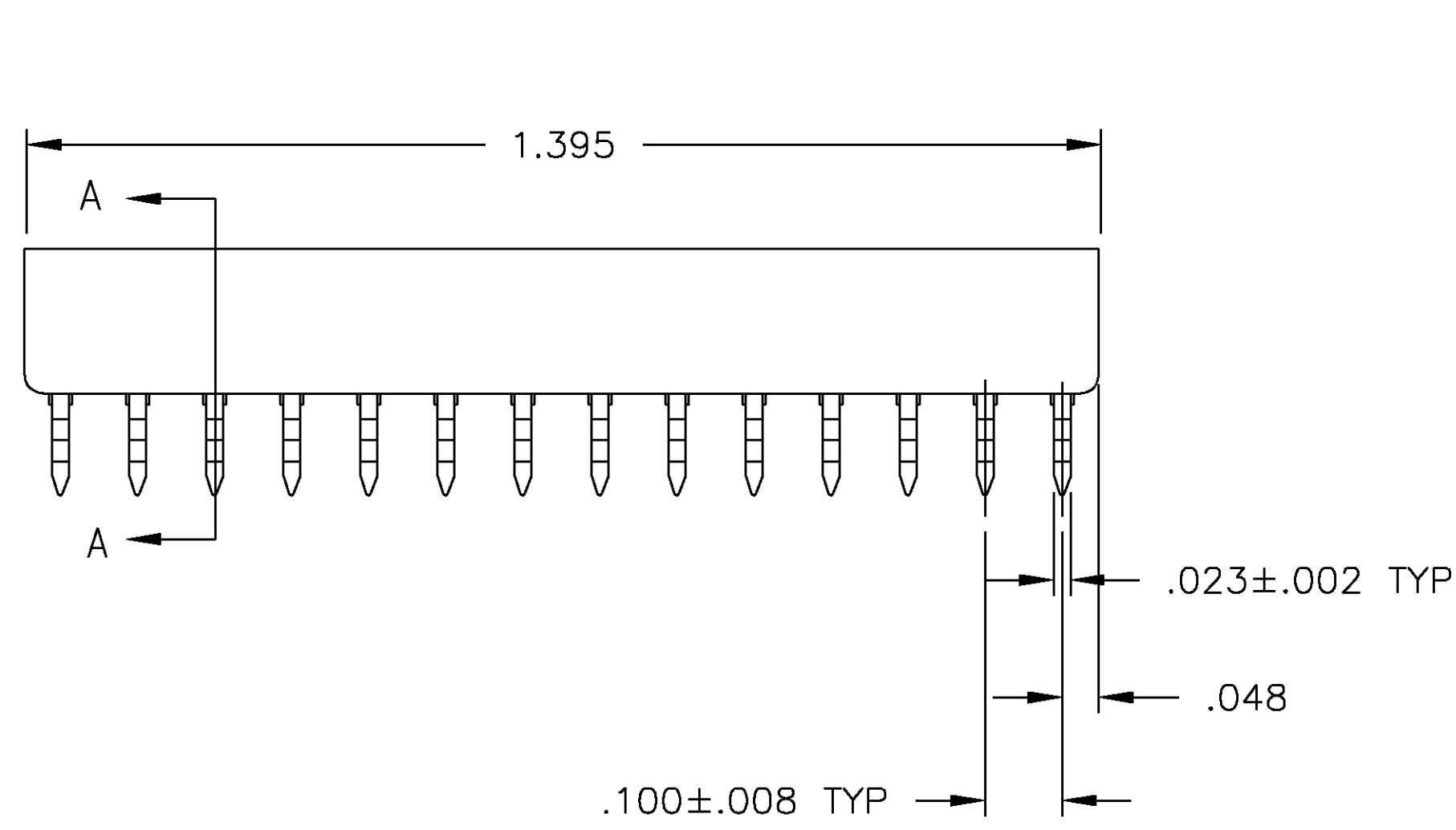
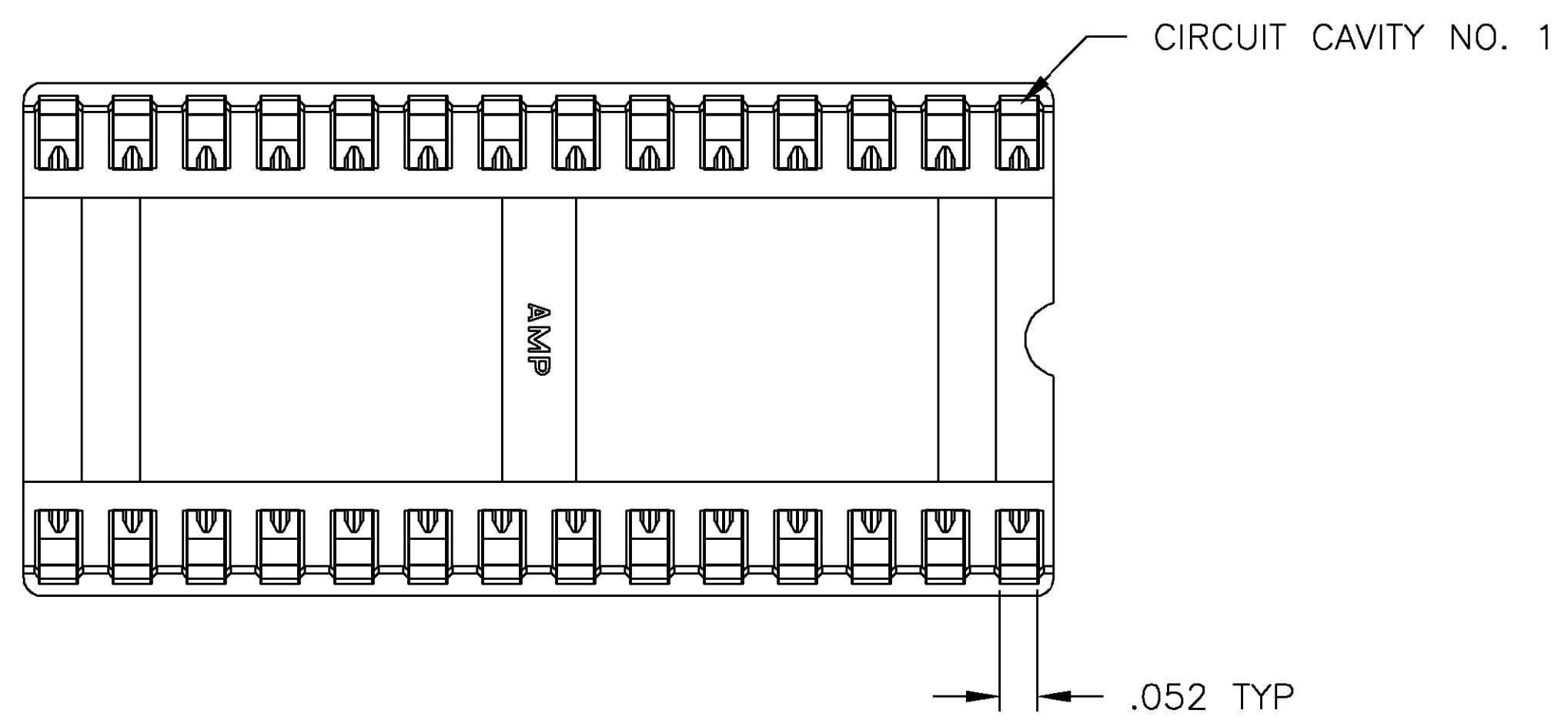
JAMECO[®]
ELECTRONICS

www.Jameco.com ♦ 1-800-831-4242

The content and copyrights of the attached
material are the property of its owner.

Jameco Part Number 838225

- RECEPTACLE ACCEPTS A .008-.014 THICK I.C. LEAD.
 - TUBE LOADED.
- ⚠ TWO .000030 MIN THK. GOLD STRIPES IN CONTACT AREA WITH TIN-LEAD (93/7) ON CONTACT LEGS, BALANCE OF CONTACT NICKEL PLATED.
 - ⚠ TWO .000015 MIN THK. GOLD STRIPES IN CONTACT AREA WITH TIN-LEAD (93/7) ON CONTACT LEGS, BALANCE OF CONTACT NICKEL PLATED.



OBSOLETE	TINNED	PHOS.BRZ. .006 THK	GLASS-FILLED THERMOPLASTIC, 94V-O, BLACK	2-641615-5
	⚠	PHOS.BRZ. .006 THK	GLASS-FILLED THERMOPLASTIC, 94V-O, BLACK	2-641615-4
	TINNED	PHOS.BRZ. .006 THK	GLASS-FILLED THERMOPLASTIC, 94V-O, BLACK	2-641615-3
	⚠	BE.CU. .006 THK	GLASS-FILLED THERMOPLASTIC, 94V-O, BLACK	2-641615-2
	TINNED	BE.CU. .006 THK	GLASS-FILLED THERMOPLASTIC, 94V-O, BLACK	2-641615-1
	CONTACT FINISH	CONTACT MAT'L	HOUSING MATERIAL	PART NO.

THIS DRAWING IS A CONTROLLED DOCUMENT.

DIMENSIONS: INCHES	TOLERANCES UNLESS OTHERWISE SPECIFIED:	DWG: M. CYRUS	09JAN01
0 PLC ± -	1 PLC ± -	CHK: H. WYNKOOP	17NOV00
2 PLC ± -	3 PLC ± .005	APVD: H. WYNKOOP	17NOV00
4 PLC ± -	ANGLES ± α-30°	NAME: H. WYNKOOP	17NOV00
MATERIAL: SEE TABLE	FINISH: SEE TABLE	PRODUCT SPEC: 108-1066	APPLICATION SPEC: 114-1049
		SIZE: A1	CAGE CODE: 00779
		WEIGHT: -	DRAWING NO: 641615
		CUSTOMER DRAWING	SCALE: 5:1

AMP Tyco Electronics Corporation
Harrisburg, PA 17105

SOCKET ASSY, DIP, LADDER, RET LEG,
28 POS, DIPLOMATE™ DL

RESTRICTED TO

SHEET 1 OF 1 REV Y