

Distributed by:

JAMECO[®]
ELECTRONICS

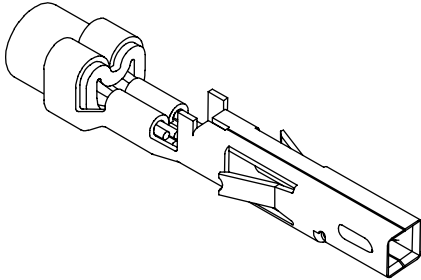
www.Jameco.com ♦ 1-800-831-4242

The content and copyrights of the attached
material are the property of its owner.

Jameco Part Number 2010544

4.20mm (.165") Pitch Mini-Fit Plus™ Terminal

46083
Crimp, Female



Features and Benefits

- Post-plated contacts for superior electrical performance over time
- Reliable 2-point contact design for use in harsh applications or where vibration is expected

Reference Information

Packaging: Reel or bag
Use With: 5557, 30067, 42474 and 44516 housings
Designed In: Millimeters

Electrical

Voltage: 600V
Current: When mating 2-circuit connectors

	16 AWG	18 AWG	20 AWG	22 AWG	24 AWG
Brass	9.0A	9.0A	7.0A	5.0A	4.0A
Phosphor Bronze	8.0A	8.0A	6.0A	4.0A	3.0A

Contact Resistance: 10 milliohms max.
Dielectric Withstanding Voltage: 1500V
Insulation Resistance: 1000 Megohms min.

Mechanical

Contact Insertion Force: 1.5kg max.
Contact Retention to Housing: 3.0kg min.
Wire Pull-Out Force: 9.0kg min.
Normal Force: 200g min.
Durability: Tin—75 cycles
Gold—100 cycles

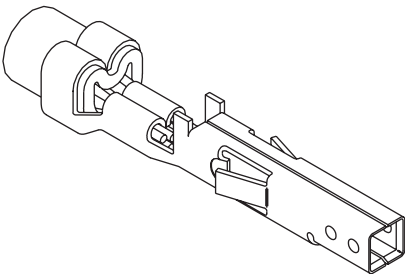
Physical

Contact: Brass or Phosphor Bronze
Plating: Tin or Select Gold
Underplating: Nickel
Operating Temperature: -40 to 105°C

Base Material	Plating Phos Bronze	Insulation Range	Wire Range AWG	Reel	Bag	Lead-free
Brass	Tin	2.20-3.15mm	16	46083-3111	46083-3112	Yes
		1.65-2.95mm	18-20	46083-1111	46083-1112	
		1.20-1.80mm	22-24	46083-2111	46083-2112	
	Select Gold	2.20-3.15mm	16	46083-3211	46083-3212	
		1.65-2.95mm	18-20	46083-1211	46083-1212	
		1.20-1.80mm	22-24	46083-2211	46083-2212	
Phosphor Bronze	Tin	2.20-3.15mm	16	46083-3121	46083-3122	
		1.65-2.95mm	18-20	46083-1121	46083-1122	
		1.20-1.80mm	22-24	46083-2121	46083-2122	
	Select Gold	2.20-3.15mm	16	46083-3221	46083-3222	
		1.65-2.95mm	18-20	46083-1221	46083-1222	
		1.20-1.80mm	22-24	46083-2221	46083-2222	

4.20mm (.165") Pitch Mini-Fit® Family Terminal

5556
Crimp, Female



Features and Benefits

- Four gas-tight points of contact on Tin-plated contacts

Reference Information

Packaging: Reel or bag
Use With: 5557, 30067 and 42474 housings
Designed In: Millimeters

Electrical

Voltage: 600V
Current: 16 AWG—9.0A max.
Contact Resistance: 10 milliohms max.
Dielectric Withstanding Voltage: 1500V
Insulation Resistance: 1000 Megohms min.

Mechanical

Contact Insertion Force: 1.5kg max.
Contact Retention to Housing: 3.0kg min.
Wire Pull-Out Force: 9.0kg min.
Normal Force: 200g min.
Durability: 30 cycles

Physical

Contact: Brass or Phosphor Bronze
Plating: Pre-plated Tin
Underplating: Copper
Operating Temperature: -40 to 105°C

Contact Material	Wire Size (AWG)	Insulation Range	Order No. 5556		Lead-free
			Reel	Bag	
Brass	16	1.80-3.10 (.071-.122)	39-00-0077	39-00-0078	Yes
	18-24	1.30-3.10 (.051-.122)	39-00-0038	39-00-0039	
Phosphor Bronze	16	1.80-3.10 (.071-.122)	39-00-0079	39-00-0080	
	18-24	1.30-3.10 (.051-.122)	39-00-0059	39-00-0060	



PRODUCT SPECIFICATION



LANGUAGE

JAPANESE
ENGLISH

【 1. 適用範囲 SCOPE 】

本仕様書は、_____ 殿 に納入する。

4. 2mm ピッチ プリント基板用 コネクタ _____ について規定する。

This specification covers the NEW MINI. FIT CONNECTOR series.

【 2. 製品名称及び型番 PRODUCT NAME AND PART NUMBER 】

製品名称 Product Name	製品型番 Part Number
ターミナル (AWG #18~#24) Terminal (AWG #18~#24)	5556PBT
	5556PBTL
ハウジング (UL 94V-2) Housing (UL 94V-2)	5557-NR
ハウジング (UL 94V-0) Housing (UL 94V-0)	5557-NR-210
ヘッダー アセンブリ (UL 94V-2) Header Assembly (UL 94V-2)	5569-NA1
ヘッダー アセンブリ (UL 94V-0) Header Assembly (UL 94V-0)	5569-NA1-210

N : 図面参照 Refer to the drawing.

REV.	B														
SHEET	1~9														
REVISE ON PC ONLY						TITLE:									
B		変更 REVISED J2006-2643 '06/02/20 M.NABEI				NEW MINI FIT CONN. 製品仕様書									
THIS DOCUMENT CONTAINS INFORMATION THAT IS PROPRIETARY TO MOLEX INC. AND SHOULD NOT BE USED WITHOUT WRITTEN PERMISSION															
REV.	DESCRIPTION					WRITTEN BY:	CHECKED BY:	APPROVED BY:	DATE: YR/MO/DAY						
	DESIGN CONTROL J		STATUS												
DOCUMENT NUMBER PS-5557-021									FILE NAME PS5557021.doc	SHEET 1 OF 9					
EN-37-1(019)															



PRODUCT SPECIFICATION



LANGUAGE

JAPANESE
ENGLISH

【 3. 定格及び適用電線 RATINGS AND APPLICABLE WIRES 】

項 目 Item	規 格 Standard	
最大許容電圧 Rated Voltage (MAX.)	600V [AC (実効値 rms) /DC]	
最大許容電流及び適用電線 Rated Current (MAX.) and Applicable Wires	AWG #18	5A
	AWG #20	4A
	AWG #22	3A
	AWG #24	2A
被覆外径: ϕ 1.3mm ~ ϕ 3.1mm Insulation O.D.		
使用温度範囲 Ambient Temperature Range	-40 ~ +105°C ^{*1}	

*1: 通電による温度上昇分を含む。
Including terminal temperature rise.

REVISE ON PC ONLY

B

SEE SHEET 1 OF 9

TITLE:

NEW MINI FIT CONN.

製品仕様書

REV.

DESCRIPTION

THIS DOCUMENT CONTAINS INFORMATION THAT IS PROPRIETARY TO
MOLEX INC. AND SHOULD NOT BE USED WITHOUT WRITTEN PERMISSION

DOCUMENT NUMBER

PS-5557-021

FILE NAME

PS5557021.doc

SHEET

2 OF 9

EN-37-1(019)



PRODUCT SPECIFICATION



LANGUAGE

JAPANESE
ENGLISH

【 4. 性能 PERFORMANCE 】

4-1. 電氣的性能 Electrical Performance

項目 Item		条件 Test Condition	規格 Requirement
4-1-1	接触抵抗 Contact Resistance	コネクタを嵌合させ、開放電圧 20mV 以下、短絡電流 10mA にて測定する。 (JIS C5402 5.4) Mate connectors, measure by dry circuit, 20mV MAX., 10mA. (JIS C5402 5.4)	10 milliohm MAX.
4-1-2	絶縁抵抗 Insulation Resistance	コネクタを嵌合させ、隣接するターミナル間及びターミナル、アース間に DC 500V を印加し測定する。 (JIS C5402 5.2/MIL-STD-202 試験法 302 試験条件B) Mate connectors and apply 500V DC between adjacent terminal or ground. (JIS C5402 5.2/MIL-STD-202 Method 302 Cond. B)	1000 Megohm MIN.
4-1-3	耐電圧 Dielectric Strength	コネクタを嵌合させ、隣接するターミナル間及びターミナル、アース間に AC(rms) 1500V(実効値) を 1分間 印加する。 (JIS C5402 5.1/MIL-STD-202 試験法 301) Mate connectors and apply 1000V AC(rms) for 1 minute between adjacent terminal or ground. (JIS C5402 5.1/MIL-STD-202 Method 301)	異状無きこと No Breakdown
4-1-4	圧着部接触抵抗 Contact Resistance on Crimped Portion	ターミナルに適合電線を圧着し、開放電圧20mV以下、短絡電流10mAにて測定する。 Crimp the applicable wire on to the terminal, measure by dry circuit, 20mV MAX., 10mA.	5 milliohm MAX.

REVISE ON PC ONLY

B

SEE SHEET 1 OF 9

TITLE:

NEW MINI FIT CONN.

製品仕様書

REV.

DESCRIPTION

THIS DOCUMENT CONTAINS INFORMATION THAT IS PROPRIETARY TO MOLEX INC. AND SHOULD NOT BE USED WITHOUT WRITTEN PERMISSION

DOCUMENT NUMBER

PS-5557-021

FILE NAME

PS5557021.doc

SHEET

3 OF 9

EN-37-1(019)



PRODUCT SPECIFICATION



LANGUAGE

JAPANESE
ENGLISH

4-2. 機械的性能 Mechanical Performance

項目 Item		条件 Test Condition		規格 Requirement
4-2-1	挿入力及び 抜去力 Insertion and Withdrawal Force	毎分25±3mm の速さで挿入、抜去を行う。 Insert and withdraw connectors at the speed rate of 25±3mm /minute.		第6項参照 See para 6.
4-2-2	圧着部 引張り強度 Crimping Pull Out Force	圧着されたターミナルを治具に固定し、電線を軸方向に毎分25±3mmの速さで引張る。 (JIS C5402 6.8) Fix the crimped terminal, apply axial pull out force on the wire at the speed rate of 25±3mm/minute MIN. (JIS C5402 6.8)	AWG #18	88.2N {9.0kgf}MIN.
			AWG #20	58.8N {6.0kgf}MIN.
			AWG #22	39.2N {4.0kgf}MIN.
			AWG #24	29.4N {3.0kgf}MIN.
4-2-3	ターミナル挿入力 Terminal Insertion Force	圧着されたターミナルをハウジングに挿入する。 Insert the crimped terminal into the housing.		14.7N {1.5kgf}MAX.
4-2-4	ターミナル 保持力 Terminal/Housing Retention Force	圧着されたターミナルをハウジングに装着し、電線を軸方向に毎分 25±3mm の速さで引っ張る。 Apply axial pull out force at a speed rate of 25±3mm/minute on the terminal assembled in the housing.		29.4N{3.0kgf} MIN.
4-2-5	ピン保持力 Pin Retention Force	毎分 25±3mm の速さでピンを軸方向に押す。 Apply axial push force at the speed rate of 25±3mm/minute.		9.8N{1.0kgf} MIN.

REVISE ON PC ONLY

TITLE:

B

SEE SHEET 1 OF 9

NEW MINI FIT CONN.

製品仕様書

REV.

DESCRIPTION

THIS DOCUMENT CONTAINS INFORMATION THAT IS PROPRIETARY TO MOLEX INC. AND SHOULD NOT BE USED WITHOUT WRITTEN PERMISSION

DOCUMENT NUMBER

PS-5557-021

FILE NAME

PS5557021.doc

SHEET

4 OF 9

EN-37-1(019)



PRODUCT SPECIFICATION



LANGUAGE

JAPANESE
ENGLISH

4-3. その他 Environmental Performance and Others

項目 Item	条件 Test Condition	規格 Requirement	
4-3-1 繰り返し挿抜 Repeated Insertion / Withdrawal	1分間 10回以下の速さで挿入、抜去を 30回繰り返す。 When mated up to 30 cycles repeatedly by the rate of 10 cycles/minute.	接触抵抗 Contact Resistance	20 milliohm MAX.
4-3-2 温度上昇 Temperature Rise	コネクタを嵌合させ、最大許容電流を通電し、コネクタの温度上昇分を測定する。 (UL 498) Carrying rated current load. (UL 498)	温度上昇 Temperature Rise	30°C MAX.
4-3-3 耐振動性 Vibration	DC 1mA 通電状態にて、嵌合軸を含む互いに垂直な 3方向 に掃引割合 10~55~10Hz/分、全振幅 1.5mm の振動を 各2時間 加える。 (MIL-STD-202 試験法 201A) Amplitude: 1.5 mm P-P Sweep time: 10-55-10 Hz in 1 minute Duration: 2 hours in each X.Y.Z. axes (MIL STD-202 Method 201A)	外観 Appearance	異常なきこと No Damage
		接触抵抗 Contact Resistance	20 milliohm MAX.
		瞬断 Discontinuity	1.0 microsec. MAX.
4-3-4 耐衝撃性 Shock	DC 1mA 通電状態にて、嵌合軸を含む互いに垂直な 6方向 に、490m/s ² { 50G } の衝撃を 各3回 加える。 (JIS C0041/MIL-STD-202 試験法 213B 試験条件 A) 490m/s ² { 50G }, 3 strokes in each X.Y.Z. axes. (JIS C0041/MIL-STD-202 Method 213B Cond. A)	外観 Appearance	異常なきこと No Damage
		接触抵抗 Contact Resistance	20 milliohm MAX.
		瞬断 Discontinuity	1.0 microsec. MAX.
4-3-5 耐熱性 Heat Resistance	コネクタを嵌合させ、105±2°C の雰囲気中に 96時間 放置後取り出し、1~2時間 室温に放置する。 (JIS C0021/MIL-STD-202 試験法 108A) 105±2°C, 96 hours (JIS C0021/MIL-STD-202 Method 108A)	外観 Appearance	異常なきこと No Damage
		接触抵抗 Contact Resistance	20 milliohm MAX.

REVISE ON PC ONLY

TITLE:

B

SEE SHEET 1 OF 9

NEW MINI FIT CONN.

製品仕様書

REV.

DESCRIPTION

THIS DOCUMENT CONTAINS INFORMATION THAT IS PROPRIETARY TO MOLEX INC. AND SHOULD NOT BE USED WITHOUT WRITTEN PERMISSION

DOCUMENT NUMBER

PS-5557-021

FILE NAME

PS5557021.doc

SHEET

5 OF 9

EN-37-1(019)



PRODUCT SPECIFICATION



LANGUAGE

JAPANESE
ENGLISH

項 目 Item		条 件 Test Condition	規 格 Requirement	
4-3-6	耐寒性 Cold Resistance	コネクタを嵌合させ、-40±3°C の雰囲気中に 96時間 放置後取り出し、1~2時間 室温に放置する。 (JIS C0020) -40±3°C, 96 hours (JIS C0020)	外 観 Appearance	異常なきこと No Damage
			接触抵抗 Contact Resistance	20 milliohm MAX.
4-3-7	耐湿性 Humidity	コネクタを嵌合させ、60±2°C、相対湿度 90~95% の雰囲気中に 96時間 放置後取り出し、1~2時間 室温に放置する。 (JIS C0022/MIL-STD-202 試験法103B 試験条件B) Temperature : 60±2°C Relative Humidity : 90 to 95% Duration : 96 hours (JIS C0022/MIL-STD-202 Method 103B Cond. B)	外 観 Appearance	異常なきこと No Damage
			接触抵抗 Contact Resistance	20 milliohm MAX.
			耐 電 圧 Dielectric Strength	4-1-3項 満足こと Must meet 4-1-3
			絶縁抵抗 Insulation Resistance	100 Megohm MIN.
4-3-8	温度サイクル Temperature Cycling	コネクタを嵌合させ、-55°C に 30分、+105°C に 30分、これを 1サイクル とし、5サイクル 繰り返す。但し、温度移行時間は、5分以内 とする。試験後 1~2時間 室温に放置する。(JIS C0025) 5 cycles of : a) -55°C 30 minutes b) +105°C 30 minutes (JIS C0025)	外 観 Appearance	異常なきこと No Damage
			接触抵抗 Contact Resistance	20 milliohm MAX.

REVISE ON PC ONLY

TITLE:

B

SEE SHEET 1 OF 9

NEW MINI FIT CONN.

製品仕様書

REV.

DESCRIPTION

THIS DOCUMENT CONTAINS INFORMATION THAT IS PROPRIETARY TO MOLEX INC. AND SHOULD NOT BE USED WITHOUT WRITTEN PERMISSION

DOCUMENT NUMBER

PS-5557-021

FILE NAME

PS5557021.doc

SHEET

6 OF 9

EN-37-1(019)



PRODUCT SPECIFICATION



LANGUAGE

JAPANESE
ENGLISH

項目 Item		条件 Test Condition	規格 Requirement	
4-3-9	塩水噴霧 Salt Spray	コネクタを嵌合させ、35±2°Cにて、重量比5±1%の塩水を48±4時間噴霧し、試験後常温で水洗いした後、室温で乾燥させる。 (JIS C5028/MIL-STD-202 試験法 101D 試験条件B) 48±4 hours exposure to a salt spray from the 5±1% solution at 35±2°C. (JIS C0023/MIL-STD-202 Method 101D Cond. B)	外 観 Appearance	異常なきこと No Damage
			接触抵抗 Contact Resistance	20 milliohm MAX.
4-3-10	亜硫酸ガス SO ₂ Gas	コネクタを嵌合させ、40±2°Cにて50±5ppmの亜硫酸ガス中に24時間放置する。 24 hours exposure to 50±5ppm. SO ₂ gas at 40±2°C.	外 観 Appearance	異常なきこと No Damage
			接触抵抗 Contact Resistance	20 milliohm MAX.
4-3-11	半田付け性 Solder Ability	ターミナルまたはピンをフラックスに浸し、本体の取付け基準面より1.2mm迄、245±3°Cの半田に3±0.5秒浸す。 Solder Time : 3±0.5 seconds. Solder Temperature : 245±3°C	濡れ性 Solder Wetting	浸漬面積の75%以上 75% of immersed area must show no voids, pin holes.
4-3-12	半田耐熱性 Resistance to Soldering Heat	ターミナルまたはピンを本体の取付け基準面より1.2mm迄、260±5°Cの半田に5±0.5秒浸す。 Solder Time : 5±0.5 seconds.. Solder Temperature : 260±5°C	外 観 Appearance	端子ガタ割れ等 異常なきこと No Damage

() : 参考規格 Reference Standard
{ } : 参考単位 Reference Unit

【 5. 外観形状、寸法及び材質 PRODUCT SHAPE, DIMENSIONS AND MATERIALS 】

図面参照 Refer to the drawing.

REVISE ON PC ONLY		TITLE:	
B	SEE SHEET 1 OF 9	NEW MINI FIT CONN.	
	REV.	DESCRIPTION	製品仕様書
DOCUMENT NUMBER PS-5557-021		THIS DOCUMENT CONTAINS INFORMATION THAT IS PROPRIETARY TO MOLEX INC. AND SHOULD NOT BE USED WITHOUT WRITTEN PERMISSION	
		FILE NAME PS5557021.doc	SHEET 7 OF 9



PRODUCT SPECIFICATION



LANGUAGE

JAPANESE
ENGLISH

【 6. 挿入力及び抜去力 INSERTION / WITHDRAWAL FORCE 】

極数 No. of CKT.	単位 Unit	挿入力 (最大値) Insertion Force (MAX.)			抜去力 (最小値) Withdrawal Force (MIN.)		
		初回 1st	6回目 6th	30回目 30th	初回 1st	6回目 6th	30回目 30th
2	N {kgf}	28.4 {2.9}	26.4 {2.7}	26.4 {2.7}	1.0 {0.10}	0.8 {0.08}	0.8 {0.08}
4	N {kgf}	56.8 {5.8}	52.9 {5.4}	52.9 {5.4}	2.0 {0.20}	1.6 {0.16}	1.6 {0.16}
6	N {kgf}	85.3 {8.7}	79.4 {8.1}	79.4 {8.1}	3.0 {0.30}	2.4 {0.24}	2.4 {0.24}
8	N {kgf}	113.7 {11.6}	105.9 {10.8}	105.9 {10.8}	4.0 {0.40}	3.2 {0.32}	3.2 {0.32}
10	N {kgf}	142.2 {14.5}	132.4 {13.5}	132.4 {13.5}	4.9 {0.50}	4.0 {0.40}	4.0 {0.40}
12	N {kgf}	170.6 {17.4}	158.9 {16.2}	158.9 {16.2}	5.9 {0.60}	4.7 {0.48}	4.7 {0.48}
14	N {kgf}	199.1 {20.3}	185.4 {18.9}	185.4 {18.9}	6.9 {0.70}	5.5 {0.56}	5.5 {0.56}
16	N {kgf}	227.5 {23.2}	211.8 {21.6}	211.8 {21.6}	7.9 {0.80}	6.3 {0.64}	6.3 {0.64}
18	N {kgf}	256.0 {26.1}	238.3 {24.3}	238.3 {24.3}	8.9 {0.90}	7.1 {0.72}	7.1 {0.72}
20	N {kgf}	284.4 {29.0}	264.8 {27.0}	264.8 {27.0}	9.9 {1.00}	7.9 {0.80}	7.9 {0.80}
22	N {kgf}	312.9 {31.9}	291.3 {29.7}	291.3 {29.7}	10.8 {1.10}	8.7 {0.88}	8.7 {0.88}
24	N {kgf}	341.3 {34.8}	317.8 {32.4}	317.8 {32.4}	11.8 {1.20}	9.5 {0.96}	9.5 {0.96}

REVISE ON PC ONLY

TITLE:

B

SEE SHEET 1 OF 9

NEW MINI FIT CONN.

製品仕様書

THIS DOCUMENT CONTAINS INFORMATION THAT IS PROPRIETARY TO
MOLEX INC. AND SHOULD NOT BE USED WITHOUT WRITTEN PERMISSION

REV.

DESCRIPTION

DOCUMENT NUMBER

PS-5557-021

FILE NAME

PS5557021.doc

SHEET

8 OF 9

EN-37-1(019)



PRODUCT SPECIFICATION



LANGUAGE

JAPANESE
ENGLISH

REV.	REV. RECORD	DATE	EC NO.	WRITTEN BY :	CHECKED BY :
0	RELEASED	'88/08/23	J80696	S.M	H.H
A	REVISED	'90/10/08	J01068	H.H	Y.Y
B	REVISED	'06/02/20	J2006-2643	M.NABEI	K.TOYODA

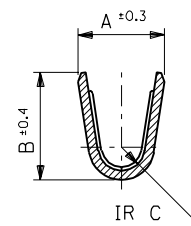
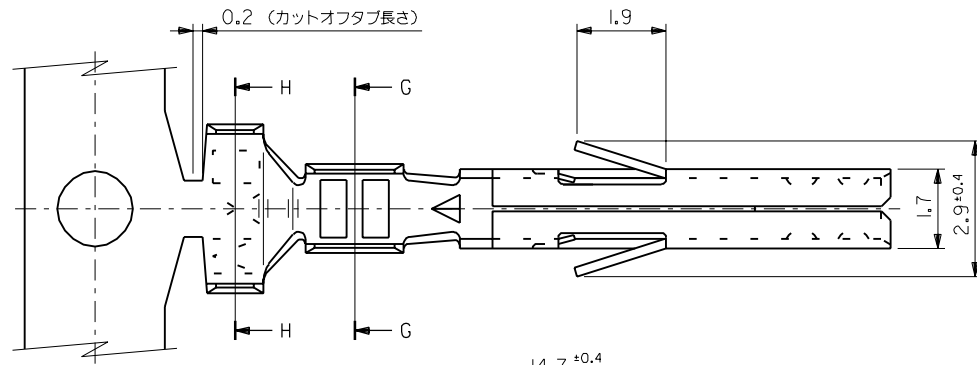
REVISE ON PC ONLY	
B	SEE SHEET 1 OF 9
REV.	DESCRIPTION

TITLE:	NEW MINI FIT CONN.
	製品仕様書
THIS DOCUMENT CONTAINS INFORMATION THAT IS PROPRIETARY TO MOLEX INC. AND SHOULD NOT BE USED WITHOUT WRITTEN PERMISSION	

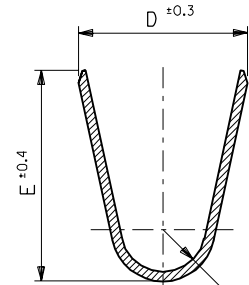
DOCUMENT NUMBER PS-5557-021	FILE NAME PS5557021.doc	SHEET 9 OF 9
---------------------------------------	----------------------------	-----------------

EDP NO. 39-00-00** ENG. NO. SD-5556****

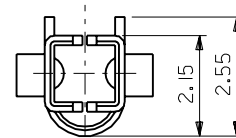
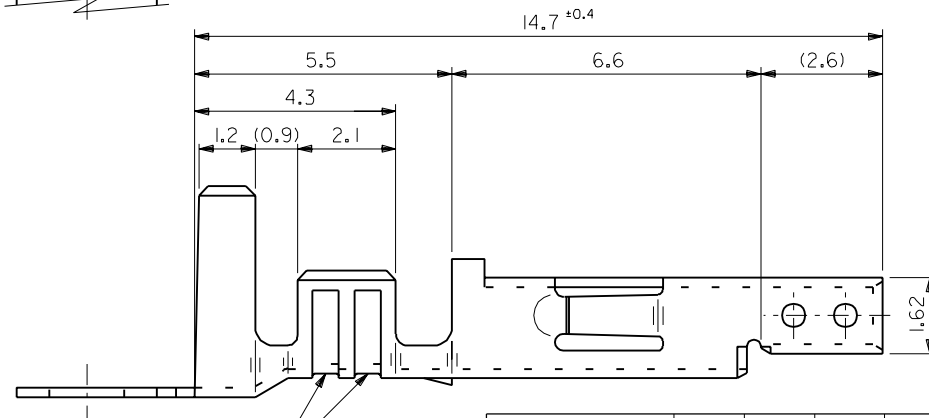
MM DIMENSIONS IN METRIC DO NOT SCALE DRAWING



SECT. G-G



SECT. H-H



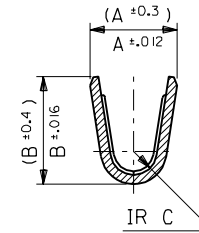
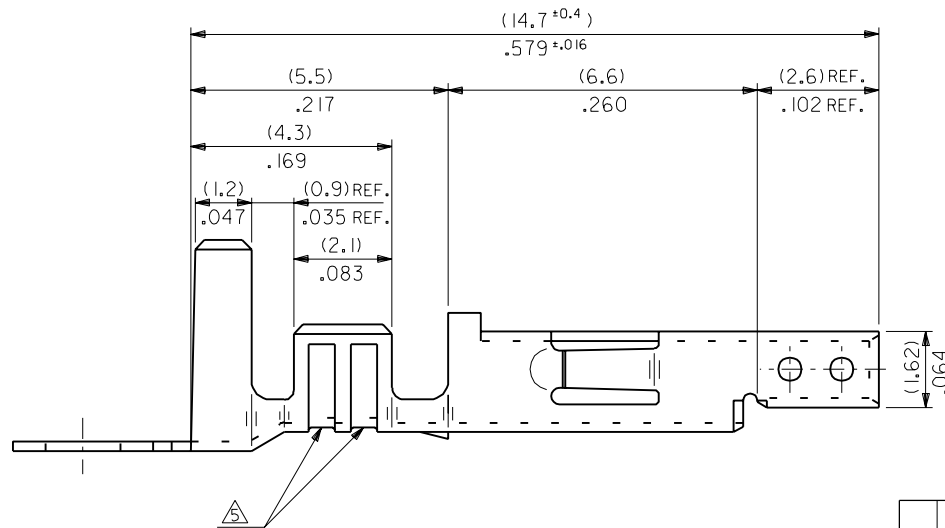
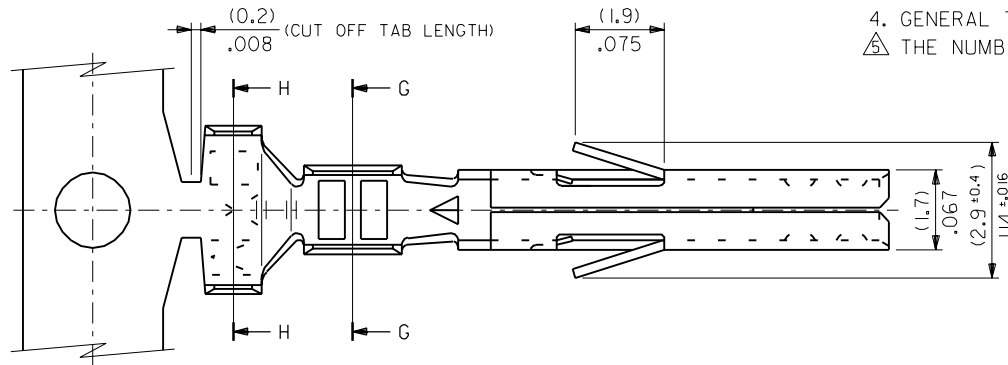
錫メッキ済リン青銅 (板厚: 0.203)	0.9	4.5	3.6	0.5	2.3	1.9	∅ 1.3-3.1	#18-24	39-00-0060	5556 PBTL	バラ状
錫メッキ済黄銅 (板厚: 0.203)	0.6	2.3	2.3	0.4	1.65	1.8	∅ 0.9-1.8	#22-28	-0059	PBT	連鎖状
	0.9	4.5	3.6	0.5	2.3	1.9	∅ 1.3-3.1	#18-24	-0047	T2L	バラ状
									-0046	T2	連鎖状
39-00-0038	5556 T	バラ状									
材料	F	E	D	C	B	A	被覆外径	適用電線	EDP NO.	ENG. NO.	端子形状

注記

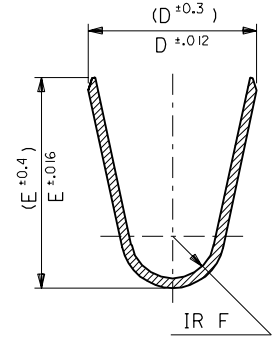
- 適合ハウジング: 5557 シリーズ
 - 嵌合相手: 5558, 5566, 5569 シリーズ
- △ 適用電線が #22-28 の製品のセレーション数は 1 とする。

材料 MATERIAL		表参照		MOLDEX JAPAN CO., LTD. 日本モレックス株式会社	
仕上げ FINISH		—H—		EDP. NO. 39-00-00**	
適用電線範囲 WIRE RANGE		表参照		ENG. NO. SD-5556****	
被覆外径 INS. RANGE		表参照		REV G	
DRAWN BY '91/5/18 H.HIRAMOTO		CHK'D BY '98/11/9 K.I.S.KUNISHI		TITLE 名称 NEW MINI. FIT CONN. CRIMP RECEPTACLE	
APP'D BY '98/11/9 M.FUKUSHIMA		尺 度 SCALE 10 - 1			
角度 ANGLE ±3°		F 変更 (JC90279) Y.K '98/11/6			
30 以上 OVER ±0.3		E 変更 (JC90012) Y.K '98/7/6			
10 以上 30 未満 UNDER ±0.25		D 変更 & 再作図 (J10380) H.H '98/5/6			
10 未満 UNDER ±0.2		記号 LTR 変更内容 DR. CHK. 日付 DATE			
一般公差 GENERAL TOLERANCES		REVISE ONLY ON CAD SYSTEM			

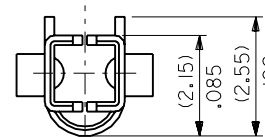
- NOTES**
1. APPLICABLE HOUSING : 5557 SERIES.
 2. MATES WITH TERMINAL : 5558, 5566, 5569 SERIES.
 3. (METRIC) VALUES SHOWN GOVERN OVER ENGLISH CONVERSION VALUES.
 4. GENERAL TOLERANCES OF ENGLISH CONVERSION VALUES : ±.008 INCH.
- △ THE NUMBER OF SERRATIONS TO BE ONE FOR WIRE RANGE #22-28.



SECT. G-G



SECT. H-H



		材料 MATERIAL	SEE SHEET 2 OF 2	MOLEX-JAPAN CO.,LTD. 日本モレックス株式会社	
J	REVISED (JC90279)	Y.K. S.K.	'98/11/6	仕上げ FINISH	SEE SHEET 2 OF 2
H	REVISED (JC90012)	Y.K. S.K.	'98/7/6	適用電線範囲 WIRE RANGE	SEE SHEET 2 OF 2
G	REVISED (JC80619)	Y.K. S.K.	'98/5/6	被覆外径 INS. RANGE	SEE SHEET 2 OF 2
F	REVISED & REDRAWN (J1038 D)	H.H.	'91/6/25	DRAWN BY '91/5/18	CHK'D BY '98/11/9
	記号 LTR	変更内容 REVISION RECORD	DR. CHK. DATE	H.HIRAMOTO	K.T.S.KUNISHI
一般公差 GENERAL TOLERANCES			REVISION RECORD	APP'D BY '98/11/9	M.FUKUSHIMA
REVISION RECORD			DATE	尺度 SCALE	10 - 1

TIN OVER NICKEL PLATED PHOSPHOR BRONZE	(0.9) .035	(4.5) .177	(3.6) .142	(0.6) .024	(2.7) .106	(2.3) .091	∅ (3.1) MAX. .122	# 16	39-00-0119	5556 PBS3L	LOOSE
									▲ -0118	▲ PBS3	CHAIN
	(0.6) .024	(2.3) .091	(2.3) .091	(0.4) .016	(1.65) .065	(1.8) .071	∅ (0.9-1.8) .035-.071	#22-28	-0116	PBS2L	LOOSE
	(0.9) .035	(4.5) .177	(3.6) .142	(0.5) .020	(2.3) .091	(1.9) .075	∅ (1.3-3.1) .051-.122	# 18-24	-0115	PBSL	LOOSE
									-0114	PBS	CHAIN
TIN PLATED PHOSPHOR BRONZE	(0.9) .035	(4.5) .177	(3.6) .142	(0.6) .024	(2.7) .106	(2.3) .091	∅ (3.1) MAX. .122	# 16	-0080	PBT3L	LOOSE
									-0079	PBT3	CHAIN
	(0.6) .024	(2.3) .091	(2.3) .091	(0.4) .016	(1.65) .065	(1.8) .071	∅ (0.9-1.8) .035-.071	#22-28	-0066	PBT2L	LOOSE
	(0.9) .035	(4.5) .177	(3.6) .142	(0.5) .020	(2.3) .091	(1.9) .075	∅ (1.3-3.1) .051-.122	# 18-24	-0060	PBTL	LOOSE
									-0059	PBT	CHAIN
TIN OVER NICKEL PLATED BRASS	(0.9) .035	(4.5) .177	(3.6) .142	(0.6) .024	(2.7) .106	(2.3) .091	∅ (3.1) MAX. .122	# 16	-0113	S3L	LOOSE
									-0112	S3	CHAIN
	(0.6) .024	(2.3) .091	(2.3) .091	(0.4) .016	(1.65) .065	(1.8) .071	∅ (0.9-1.8) .035-.071	#22-28	-0111	S2L	LOOSE
	(0.9) .035	(4.5) .177	(3.6) .142	(0.5) .020	(2.3) .091	(1.9) .075	∅ (1.3-3.1) .051-.122	# 18-24	-0109	SL	LOOSE
									-0108	S	CHAIN
TIN OVER COPPER PLATED BRASS	(0.9) .035	(4.5) .177	(3.6) .142	(0.6) .024	(2.7) .106	(2.3) .091	∅ (3.1) MAX. .122	# 16	-0078	T3L	LOOSE
									-0077	T3	CHAIN
	(0.6) .024	(2.3) .091	(2.3) .091	(0.4) .016	(1.65) .065	(1.8) .071	∅ (0.9-1.8) .035-.071	#22-28	-0047	T2L	LOOSE
	(0.9) .035	(4.5) .177	(3.6) .142	(0.5) .020	(2.3) .091	(1.9) .075	∅ (1.3-3.1) .051-.122	# 18-24	-0046	T2	CHAIN
								▼ -0039	▼ TL	LOOSE	
									39-00-0038	5556 T	CHAIN
MATERIAL	F	E	D	C	B	A	INS. RANGE	WIRE RANGE	EDP NO.	ENG. NO.	FORM

材料 MATERIAL		SEE CHART	MOLEX MOLEX-JAPAN CO.,LTD. 日本モレックス株式会社
THICKNESS : (0.203)/.008			
J	SEE SHEET 1 OF 2	Y.K S.K '98/11/6	EDP. NO.
仕上げ FINISH		SEE CHART	SEE CHART
角度 ANGLE	±3°	H	適用電線範囲 WIRE RANGE
30°以上 OVER	±0.3	G	SEE CHART
10°以上 30°未滿 UNDER	±0.25	F	被覆外径 INS. RANGE
10°未滿 UNDER	±0.2	記号 LTR	變更内容 REVISION RECORD
DR. DATE	DR. CHK. DATE	DR. CHK. DATE	尺度 SCALE 10 - 1
一般公差 GENERAL TOLERANCES	REVISE ONLY ON CAD SYSTEM		M.FUKUSHIMA

TITLE 名称	
NEW MINI. FIT CONN. CRIMP RECEPTACLE	
ENG. NO.	SHEET 2 OF 2
SD-5556*****	REV J