

Distributed by:

**JAMECO**<sup>®</sup>  
ELECTRONICS

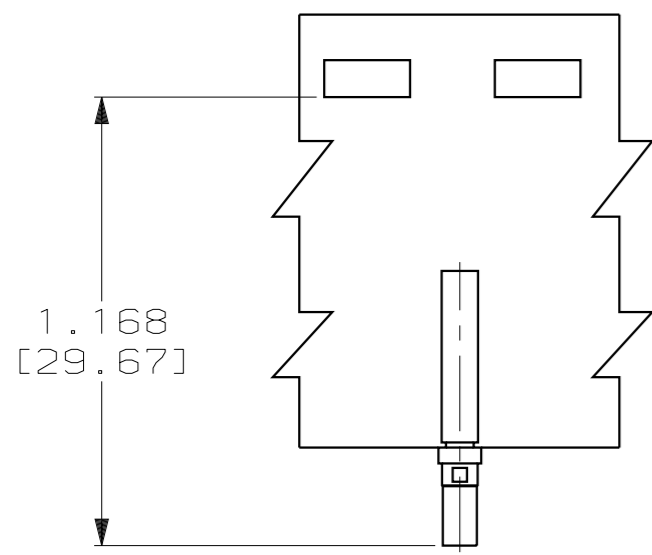
**www.Jameco.com ♦ 1-800-831-4242**

The content and copyrights of the attached  
material are the property of its owner.

Jameco Part Number 449351

THIS DRAWING IS UNPUBLISHED. RELEASED FOR PUBLICATION  
 BY AMP INCORPORATED. ALL RIGHTS RESERVED.

LOC	DIST	REVISIONS					
DF	DO	P	LTR	DESCRIPTION	DATE	DWN	APVD
		M		REV PER 0H14-0553-04	8-17-04	CT	DM



205090-2  
 SCALE 2:1

.006 [0.15] x45°  
 .003 [0.08]

R .003 MAX  
 [0.08]

.032 [0.81]  
 .026 [0.66]  
 ONE WALL ONLY

.049 [1.24]  
 .040 [1.01]

.033 [0.84]  
 .029 [0.74]

.310 [7.87]  
 .290 [7.37]

∅ .045 [1.14]  
 .042 [1.07]

∅ .071 [1.80]  
 .068 [1.73]

∅ .068 [1.73]  
 .065 [1.65]

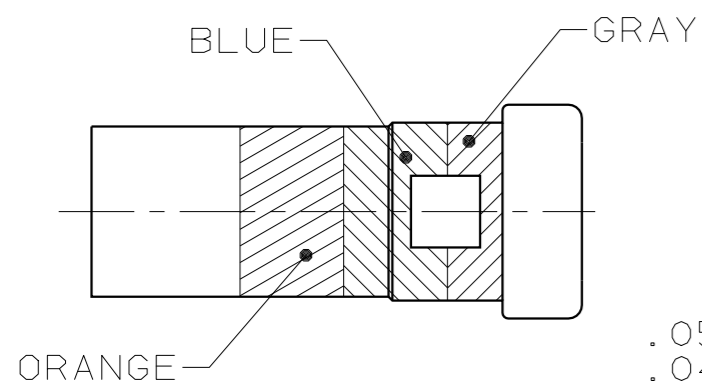
∅ .073 [1.85]  
 .069 [1.75]

BODY  
 MAT'L: LEADED NICKEL COPPER  
 FINISH: SEE TABLE

.035 [0.89]  
 .020 [0.51]  
 ONE WALL ONLY

∅ .085 [2.16]  
 .082 [2.08]  
 R .007 MAX  
 [0.18]

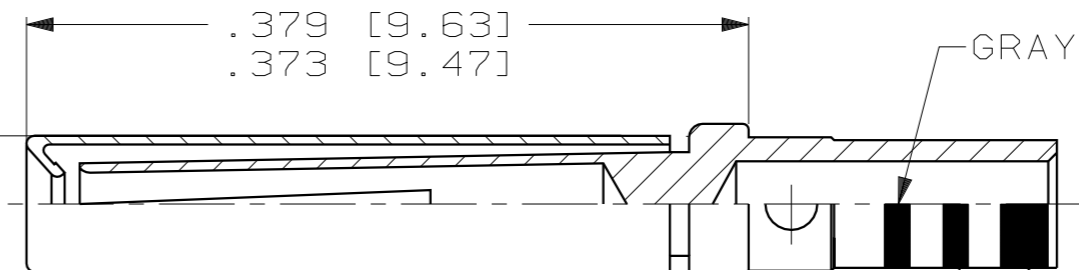
HOOD  
 MAT'L: STAINLESS STEEL  
 PER ASTM-A-240  
 FINISH: PASSIVATED PER ASTM-A-380



COLOR CODE  
 BIN NO. 368  
 SCALE 10:1

.055 [1.40]  
 .049 [1.24]  
 ∅ .025 [0.64] HOLE  
 ONE WALL ONLY  
 RADIAL LOCATION  
 OPTIONAL

ALTERNATE CONFIGURATION



GRAY COLOR CODED BAND  
 ORANGE COLOR CODED BAND  
 BLUE COLOR CODED BAND

- ALL DIMENSIONS APPLY AFTER PLATING.
- THIS DRAWING COMPLIES WITH SPECIFICATION MIL-C-39029/63 AND M24308/10-1.
- ALL DIAMETERS CONCENTRIC WITH EACH OTHER WITHIN .004 T.I.R.
- POINT OF PLATING MEASUREMENT .150 [3.81] FROM WIRE BARREL END OF CONTACT.
- ALL SURFACES HAVE 63√ OR BETTER FINISH.
- GOLD PLATED PER ASTM-B-488 TYPE 3, GRADE C, CLASS 1.25 OVER NICKEL PER QQ-N-290.
- GOLD PLATED PER ASTM-B-488 TYPE 3, GRADE C, CLASS .75 OVER NICKEL PER QQ-N-290.

NO	7	LOOSE PIECE	205090-7
YES	6	TAPE MOUNTED	205090-2
YES	6	LOOSE PIECE	205090-1
COLOR CODE	FINISH	DESCRIPTION	PART NUMBER

THIS DRAWING IS A CONTROLLED DOCUMENT.

DWN	C.C. THOMAS	8-17-04
CHK	D. MILLER	8-17-04
APVD	D. MILLER	8-17-04

**tyco** TYCO Electronics  
**Electronics** Harrisburg, PA 17105-3608 **AMP**

NAME: CONTACT ASSY, SOCKET, SIZE 20, AMPLIMITE

SIZE	A2	CAGE CODE	00779	DRAWING NO	205090	RESTRICTED TO	-
SCALE	20:1	SHEET	1 OF 1	REV	M		

CUSTOMER DRAWING