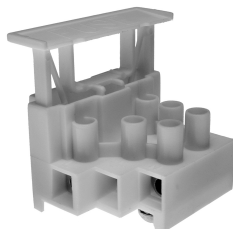


FUSES & FUSEHOLDERS

6.3x25mm (1/4"x1") Fused Terminal Blocks

- 2 or 3 pole terminal block
- Accepts 5x20mm & 6.3x25mm (1"x1/4") fuses to IEC257
- Anti rotation spigot
- IP20 finger protection
- Cable entry 3x1.5mm² or 2x2.5mm²
- Meets creepage and clearance requirements of IEC (8mm)
- 16mm fixing pitch
- 2 pole supplied in 3 pole housing
- Supplied complete with earth screw and washer
- CE approved

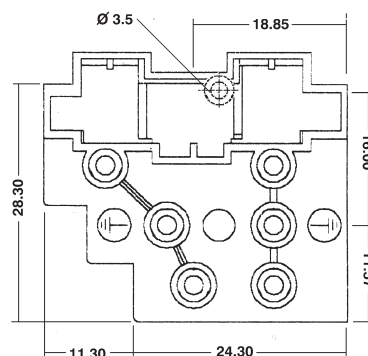
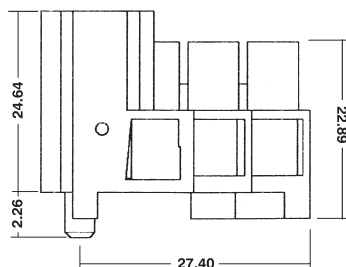
CMFTB



TYPE NO.	POLES
CMFTB/2	2
CMFTB/3	3

SPECIFICATION

Rating	Fuseholder 250V AC Terminal 450V AC
Current rating	Fuseholder 13A Terminal 20A
Moulding	UL94-V0 flame retardant PA
Terminal	Brass, nickel plated
Fuse clip	Phosphor bronze
Temperature	-20° to 125°C
Fuse size	5 x 20mm & 6.3 x 25mm (1"x1/4") glass or ceramic
Screws	M3.6
Terminal marking	L=Live/ ⊕=Earth/ N=Neutral



PCB Fuseholder for Plug-in Fuses

- Precision turned pins
- Twist free construction
- Low profile
- High retention design prevents fuse walkout during heavy vibrations
- Side and end stackable
- High solderability pin design
- Anti wicking pin design
- UL94-V0 mouldings
- 200 operations minimum life

CSICS



TYPE NO.	POLES
CSICS/3/101	2

SPECIFICATION

Rating	3A
Contacts/Resistance	Tinned nickel plated Brass, <5mΩ
Temperature range	-55°C to 125°C
Contact	Beryllium copper, heat treated
Plating	2µm/80µ" nickel 5µm/200µ" tin
Insulation Resistance	10 ⁹ MΩ at 100V
Insertion force	<250g
Withdrawal force	>50g

