

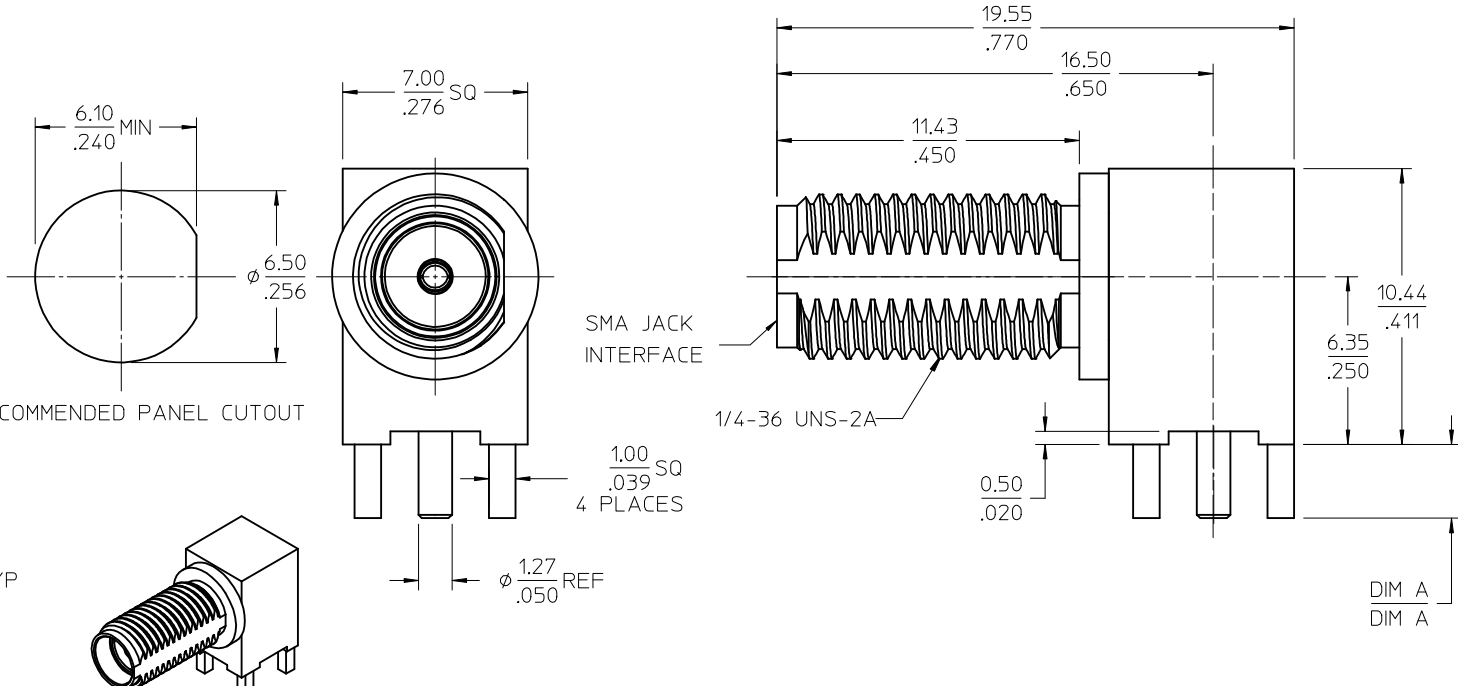
MATERIALS AND FINISHES:

BODY, JAM NUT: BRASS
FINISH: SEE TABLE

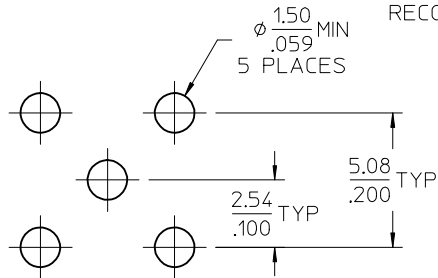
CENTER CONTACT: BERYLLIUM COPPER
PLATED GOLD

INSULATOR: TEFLON

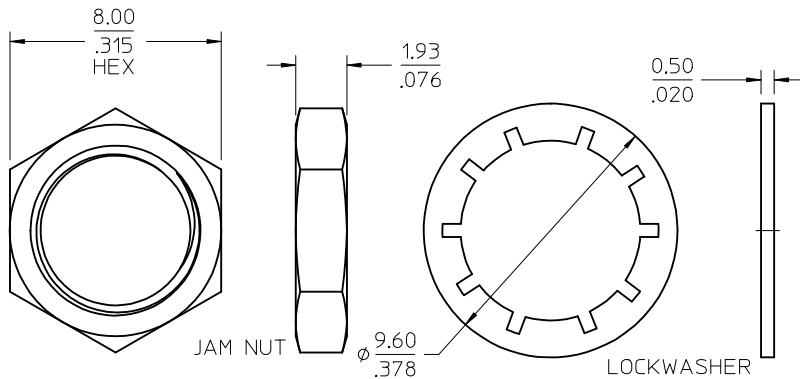
LOCKWASHER: PHOSPHOR BRONZE
FINISH: SEE TABLE



RECOMMENDED PANEL CUTOUT



RECOMMENDED PCB LAYOUT



SEE SD-73251-496 FOR PART NO. CONTINUATION

| PART NO. | PLATING (BODY, NUT, LOCKWASHER) AND PACKAGING | mm | IN |
|------------|---|------|------|
| 73251-2209 | GOLD FLASH / STANDARD TRAY | 3.94 | .155 |
| 73251-2208 | GOLD FLASH/STANDARD TRAY W/O WASHER AND NUT | 3.94 | .155 |
| 73251-2207 | 73251-2201 PACKAGED ONE PER BAG | 2.79 | .110 |
| 73251-2206 | SAME AS 73251-2201 EXCEPT COMMERCIAL CONTACT | 2.79 | .110 |
| 73251-2205 | SAME AS 73251-2200 EXCEPT COMMERCIAL CONTACT | 2.79 | .110 |
| 73251-2204 | GOLD FLASH/STANDARD TRAY W/O WASHER AND NUT | 2.79 | .110 |
| 73251-2203 | GOLD FLASH / STANDARD TRAY (54 CAVITY) | 2.79 | .110 |
| 73251-2202 | 73251-2201 PACKAGED IN SMALL TRAY (20 CAVITY) | 2.79 | .110 |
| 73251-2201 | GOLD / STANDARD TRAY | 2.79 | .110 |
| 73251-2200 | NICKEL / STANDARD TRAY | 2.79 | .110 |

| | |
|---------------|-----------------------|
| PS-89675-3460 | ELECTRO/MECH PERFORM. |
| SPECIFICATION | DESCRIPTION |

| | | | | | |
|---|-------------------------------|--|---|---|---|
| CHG: ADDED NOTE FOR PART NO. CONTINUATION. EC NO: URF2013-0294 DRW: ARROBERTSON 2012/11/21 CHK: DSSS 2012/11/21 APPR: WIENER 2012/11/27 REV: D11 | QUALITY SYMBOLS ▽=0 ▽=0 | GENERAL TOLERANCES (UNLESS SPECIFIED) mm INCH 4 PLACES ± --- ± --- 3 PLACES ± --- ± --- 2 PLACES ± --- ± --- 1 PLACE ± --- ± --- ANGULAR ± 2 ° | DIMENSION STYLE MM/IN DRAWN BY DATE CLAIRE LEE 2003/08/29 CHECKED BY DATE PAT 2003/08/29 APPROVED BY DATE | SCALE DESIGN UNITS METRIC THIRD ANGLE PROJECTION | TITLE SMA JACK, R/A PCB 50 OHM SMA-J/RA/PCB EWR-2144 |
| | | MATERIAL NO. SEE TABLE | DOCUMENT NO. SD-73251-220 | SHEET NO. 1 OF 1 | |
| | | DRAFT WHERE APPLICABLE MUST REMAIN WITHIN DIMENSIONS | | | |
| | | THIS DRAWING CONTAINS INFORMATION THAT IS PROPRIETARY TO MOLEX INCORPORATED AND SHOULD NOT BE USED WITHOUT WRITTEN PERMISSION | | | |

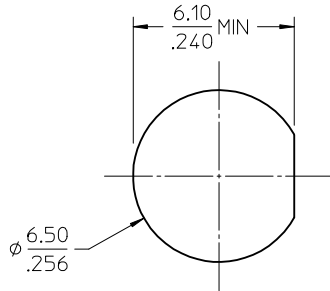
MATERIALS AND FINISHES:

BODY, JAM NUT: BRASS
FINISH: GOLD

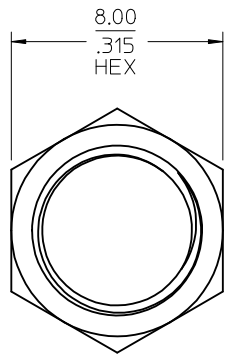
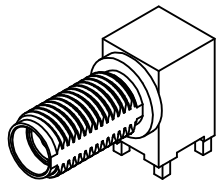
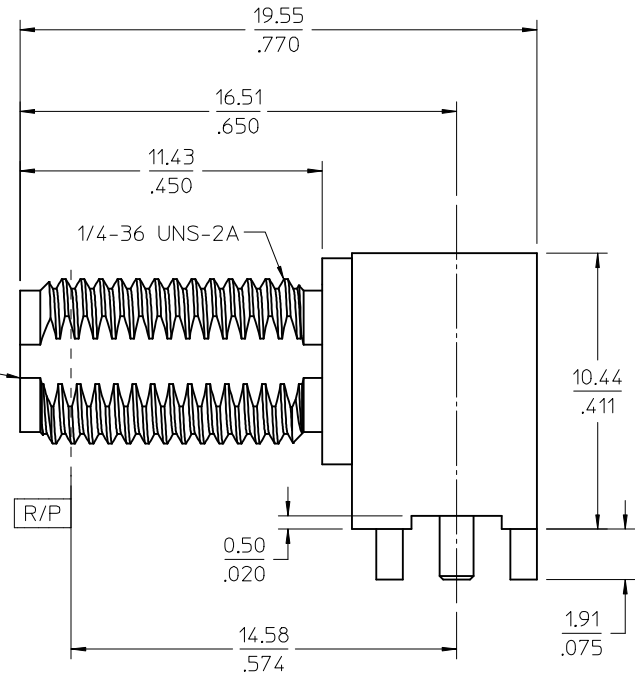
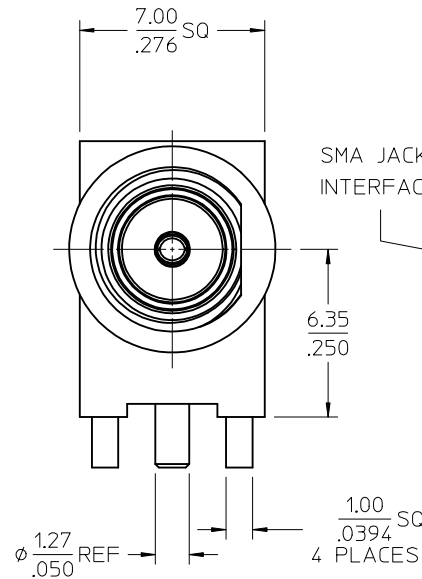
CENTER CONTACT: BERYLLIUM COPPER
PLATED GOLD

INSULATOR: TEFLON

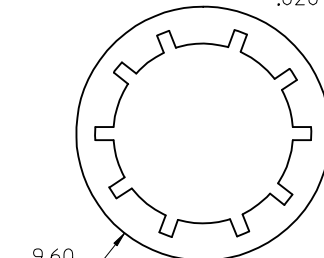
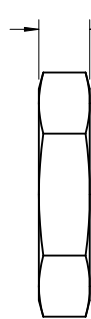
LOCKWASHER: PHOSPHOR BRONZE
FINISH: GOLD



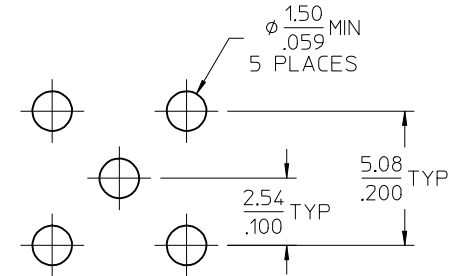
PANEL CUTOUT
3.42 / .135 MAX
THICKNESS



JAM NUT



LOCKWASHER



RECOMMENDED PCB LAYOUT

| |
|------------|
| 73251-4960 |
| PART NO. |

| | |
|--------------------------|-----------------------|
| PS-89675-3460 | PRODUCT SPECIFICATION |
| MIL-STD-348A, FIG. 310.2 | INTERFACE |
| SPECIFICATION | DESCRIPTION |

SD-73251-496 IS CONTINUATION FOR SD-73251-220

| | | | | | | |
|---|--------------------------------------|---|--------------------------|--------------------|---|------------------------------|
| CHG: LEG/CONTACT WERE .040 EC NO: URF2013-0344 DRWN: WIENER 2012/12/14 CHKD: SSS 2012/12/14 APPR: WIENER 2012/12/14 | QUALITY SYMBOLS ▽=0 ▽=0 ▽=0 | GENERAL TOLERANCES (UNLESS SPECIFIED) mm INCH 4 PLACES ± --- ± --- 3 PLACES ± --- ± --- 2 PLACES ± --- ± --- 1 PLACE ± --- ± --- 0 PLACE ± --- ± --- ANGULAR ± 2 ° DRAFT WHERE APPLICABLE MUST REMAIN WITHIN DIMENSIONS | DIMENSION STYLE MM/IN | SCALE | DESIGN UNITS INCH | THIRD ANGLE PROJECTION |
| | | | DRAWN BY AROBERTSON | DATE 2012/11/21 | TITLE SMA JACK RA BLKHD RM PCB TH SMA-J/RA/PCB, EWR-2144 molex | DOCUMENT NO. SD-73251-496 |