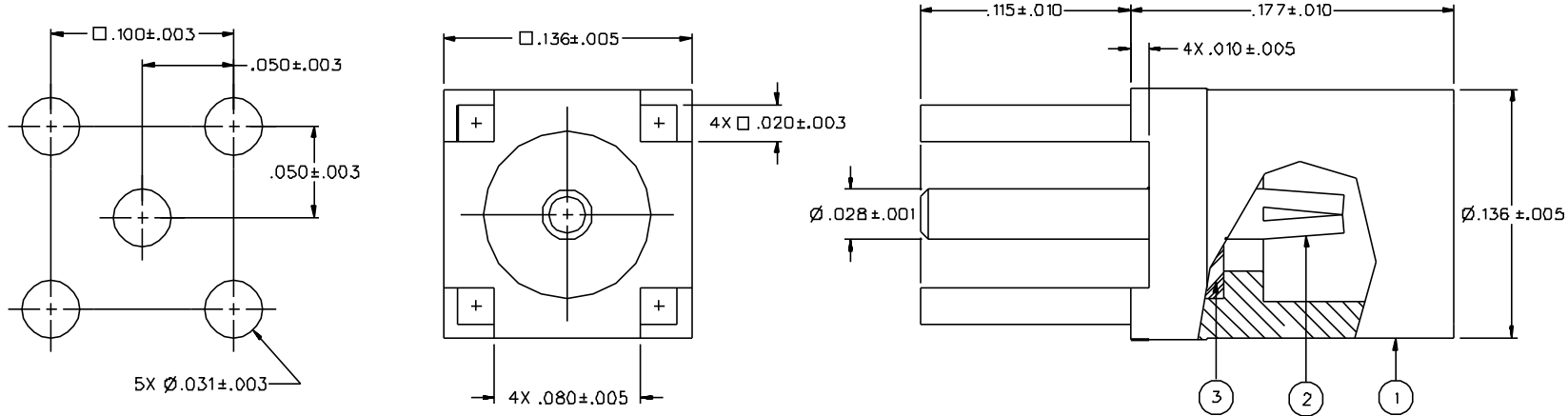


| PART NUMBER  | ITEM ①<br>BODY  | ITEM ②<br>CONTACT  | ITEM ③<br>INSULATOR |
|--------------|---|--|---------------------|
| 135-3701-2D1 | BRASS<br>GOLD PL .00001 MIN OVER<br>NICKEL PL .00005 MIN OVER<br>COPPER PL .00005 MIN | BERYLLIUM COPPER<br>GOLD PL .00003 MIN OVER<br>NICKEL PL .00005 MIN OVER<br>COPPER PL .00005 MIN | TEFLON              |
| 135-3701-2D6 | BRASS<br>NICKEL PL .0001 MIN OVER<br>COPPER PL .00005 MIN                             | BERYLLIUM COPPER<br>GOLD PL .00003 MIN OVER<br>NICKEL PL .00005 MIN OVER<br>COPPER PL .00005 MIN | TEFLON              |

|  |   |
|--|---|
| DRAWING NO.<br>C - 135-3701-201/210      |   |
| 0  | REVISIONS                                     |
| ENGINEERING RELEASE                      |   |
| 1  | 9-25-96 R H [ ] [ ] [ ] [ ] 9-30-96 ECN 44333 |
| CHANGED: UPDATED SPECS                   |   |
| * REVISION NUMBER FOLLOWED BY AN ALPHA * |   |
| * CHARACTER INDICATED DRAWING CLARIFY *  |   |
| * CAUTION ON PART NUMBER ADDITION ONLY * |   |
| 1a                                       | 9-25-96 R H [ ] [ ] [ ] [ ] ECN 44813         |



MOUNTING HOLE LAYOUT

NOTES:

1. SPECIFICATIONS:

IMPEDANCE: 50 OHMS  
 FREQUENCY RANGE: 0-6 GHz  
 VSWR: NOT APPLICABLE  
 WORKING VOLTAGE: 225 VRMS MAX AT SEA LEVEL  
 DIELECTRIC WITHSTANDING VOLTAGE: 500 VRMS MIN AT SEA LEVEL  
 INSULATION RESISTANCE: 1000 MEGOHM MIN  
 CONTACT RESISTANCE:  
 CENTER CONTACT - INITIAL 5.0 MILLIOHM MAX, AFTER ENVIRONMENTAL 8.0 MILLIOHM MAX  
 OUTER CONDUCTOR - GOLD PLATED INITIAL 1 MILLIOHM MAX, AFTER ENVIRONMENTAL 1.5 MILLIOHM MAX  
 NICKEL PLATED INITIAL 2.5 MILLIOHM MAX, AFTER ENVIRONMENTAL 3.5 MILLIOHM MAX  
 BRAID TO BODY - NOT APPLICABLE  
 CORONA LEVEL: 190 VOLTS MINIMUM AT 70,000 FEET  
 INSERTION LOSS: NOT APPLICABLE  
 RF LEAKAGE: NOT APPLICABLE  
 RF HIGH POTENTIAL WITHSTANDING VOLTAGE: 400 VRMS AT 4 AND 7 MHZ

MECHANICAL:

ENGAGE/DISENGAGE FORCE: 8 LBS MAX ENGAGEMENT  
 1.4 LBS MIN DISENGAGEMENT  
 CONTACT RETENTION FORCE: 2.0 LBS MIN AXIAL FORCE  
 CONTACT RETENTION TORQUE: NOT APPLICABLE  
 COUPLING MECHANISM RETENTION: NOT APPLICABLE  
 CABLE ACCEPTABILITY: NOT APPLICABLE  
 CABLE HEX CRIMP SIZE: NOT APPLICABLE  
 CABLE RETENTION: NOT APPLICABLE  
 DURABILITY: 500 CYCLES MIN

ENVIRONMENTAL:

{MEETS OR EXCEEDS THE APPLICABLE PARAGRAPH OF MIL-C-39012}  
 THERMAL SHOCK: MIL-STD-202, METHOD 107, CONDITION C  
 EXCEPT -55 DEG C TO 155 DEG C  
 OPERATING TEMPERATURE: -55 DEG C TO 155 DEG C  
 CORROSION: MIL-STD-202, METHOD 101, CONDITION B  
 SHOCK: MIL-STD-202, METHOD 213, CONDITION B  
 VIBRATION: MIL-STD-202, METHOD 204, CONDITION D  
 MOISTURE: MIL-STD-202, METHOD 106

CUSTOMER DRAWING

THIS DRAWING TO BE INTERPRETED PER ANSI Y 14.5M - 1982

"μSTATION"

COMPANY CONFIDENTIAL

|                                      |                         |                 |  |
|--------------------------------------|-------------------------|-----------------|--|
| TOLERANCE UNLESS OTHERWISE SPECIFIED | DRAWN BY<br>SWC         | DATE<br>9-9-96  | <br>299 Johnson Ave.<br>P.O. Box 1732<br>Waseca, MN 56093-0832 |
| DECIMALS _____ mm _____              | CHECKED BY<br>SWC       | DATE<br>9-25-96 |  |
| .XXX _____                           | APPROVED BY<br>TAK      | DATE<br>9-25-96 | TITLE<br>JACK ASSEMBLY<br>STRAIGHT PC MOUNT<br>MMCX            |
| MATL _____                           | APPROVED BY<br>RJB      | DATE<br>9-27-96 | CODE NO.   |
| FINISH _____                         | RELEASE DATE<br>9-30-96 |                 | DRAWING NO.<br>C - 135-3701-201/210                            |
|                                      |                         | SCALE 20:1      | U/M INCH SHEET 2 OF 2  |