

**NOTES:**  
 ① MAT'L: COPPER (STOCK TKN  $\frac{040}{1.02}$ )

PLATING: ELECTRO-TIN

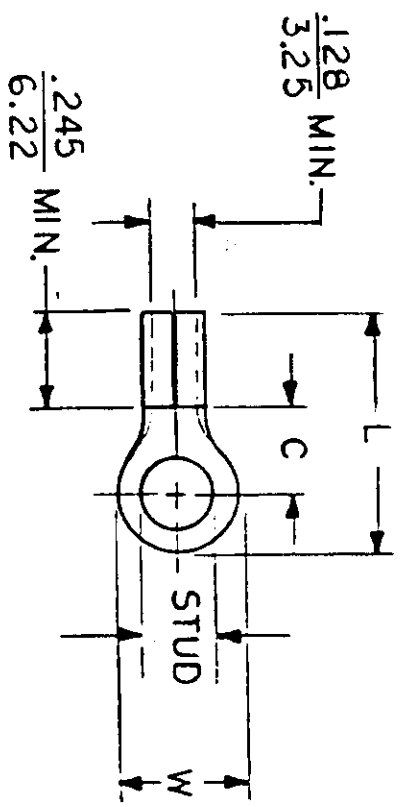
STUD SIZES: ( $\pm 0.005$ )

02 = .094 209 = .209  
 04 = .119 413 = .413  
 06 = .146  
 08 = .173  
 10 = .198  
 14 = .265  
 56 = .328  
 38 = .390

UL LISTING # E32244  
 CSA LISTING # 18689

ALL DIMENSIONS = INCHES  
 M M

WIRE SIZE: 12-10 AWG  
 4.0-6.0 MM<sup>2</sup>



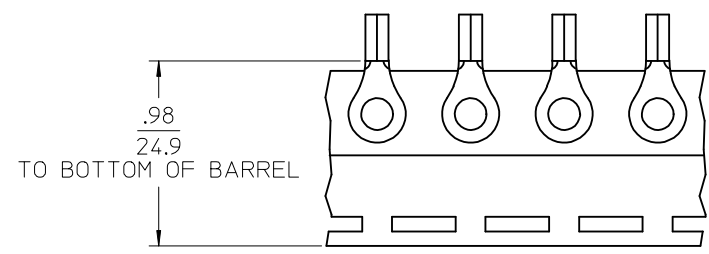
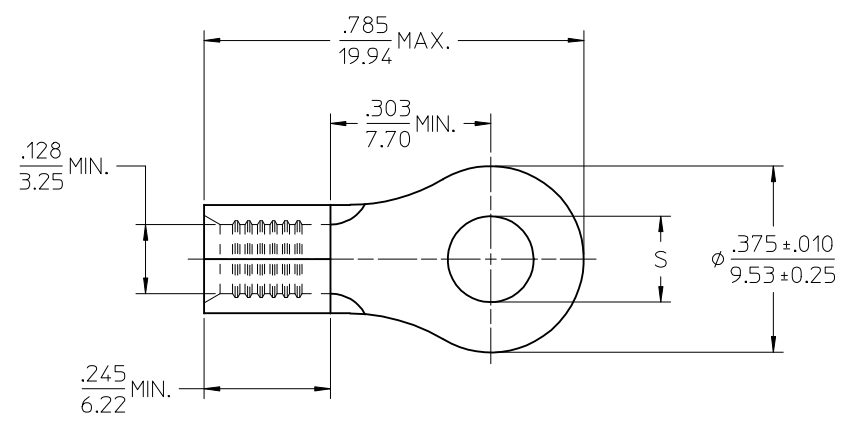
PART NUMBER	"W" ±.010	"C" MIN.	"L" MAX.	REFERENCE		TITLE:	AVAILABLE STUD SIZES
				SCALE:	NTS		
C-101-	$\frac{.750}{19.05}$	$\frac{.611}{15.52}$	$\frac{1.280}{32.51}$	DRWN. BY: <i>Ed Frank</i>	DATE: 2-10-92	RING TONGUE	14, 56, 38, 76, 12
C-128-	$\frac{.375}{9.53}$	$\frac{.303}{7.70}$	$\frac{.785}{19.94}$	CHKD. BY:		TERMINAL	04, 06, 08, 10, 209
C-130-	$\frac{.530}{13.46}$	$\frac{.393}{9.98}$	$\frac{.952}{24.18}$	APPRD. BY:		KRIMP TITE	10, 14, 56, 38
C-136-	$\frac{.282}{7.16}$	$\frac{.306}{7.77}$	$\frac{.741}{18.82}$			100-SERIES	04, 06, 08
C-140-	$\frac{.592}{15.04}$	$\frac{.468}{11.89}$	$\frac{1.056}{26.82}$				10, 14, 56, 38, 209, 413
DIMENSIONAL TOLERANCES UNLESS OTHERWISE SPECIFIED							
FRAC.	DEC.	ANG.					
±	±	±					



DWG. NO. A CUSTOMER DWG.

FILE NO. C-CD-101-01

MATERIAL NO. LOOSE PIECE	ENG. NO.	MATERIAL NO. TAPE MOUNTED	ENG. NO.	STUD SIZE	"S" ±.005/0.13	STOCK THICKNESS	FINISH
190690200	C-128-04	190690147	C-128-04T	4	.119/(3.02)	.040/(1.02)	SEE NOTE 2
190690202	C-128-06	190690148	C-128-06T	6	.146/(3.71)		
190690205	C-128-08	190690208	C-128-08T	8	.173/(4.39)		
190690209	C-128-10	190690212	C-128-10T	10	.198/(5.03)		
190690215	C-128-209	---	---	209	.209/(5.18)		
192030159	C-U-128-06	192030111	C-U-128-06T	6	.146/(3.71)	.038/(0.97)	
192030160	C-U-128-08	192030112	C-U-128-08T	8	.173/(4.39)		
192030113	C-U-128-10	192030114	C-U-128-10T	10	.198/(5.03)		
190690682	C-128-10-AU	---	---	10	.198/(5.03)	.040/(1.02)	SEE NOTE 3



SALES DRAWING

- NOTES:  
 1. MATERIAL: COPPER.  
 2. FINISH: TIN PLATING, 100(2.5)µin(µm) MIN  
 3. FINISH: GOLD, 50(1.25)µin(µm) MIN. OVER NICKEL, 50(1.25)µin(µm) MIN. PLATING.  
 4. WIRE SIZE: 12-10 AWG, 4.0-6.0 MM<sup>2</sup>  
 5. PARTS ARE ROHS COMPLIANT.

RELEASED EC NO: IFC2015-0823 DRAWING: JAS01 2014/10/30 CHKD: JMACNEIL 2014/10/30 APPR: JMACNEIL 2014/11/19	DESCRIPTION A	QUALITY SYMBOLS	GENERAL TOLERANCES (UNLESS SPECIFIED)	DIMENSION STYLE		SCALE	DESIGN UNITS	THIRD ANGLE PROJECTION
		▽=0	mm INCH	IN/MM	---	INCH	RING TONGUE TERMINAL KRIMPTITE, 128 SERIES 12-10 AWG MOLEX INCORPORATED	
		▽=0	4 PLACES ± --- ± ---	DRAWN BY DATE	BDEROSS 2000/6/13 CHECKED BY DATE JMACNEIL 2014/10/30			
			3 PLACES ± --- ± ---	APPROVED BY DATE		JMACNEIL 2014/11/19 MATERIAL NO. SD-19069-020 DOCUMENT NO. SHEET NO. 1 OF 1		
	2 PLACES ± --- ± ---	DRAFT WHERE APPLICABLE MUST REMAIN WITHIN DIMENSIONS		SEE CHART				
	1 PLACE ± --- ± ---	ANGULAR ± ---°	SIZE B		THIS DRAWING CONTAINS INFORMATION THAT IS PROPRIETARY TO MOLEX INCORPORATED AND SHOULD NOT BE USED WITHOUT WRITTEN PERMISSION			