



# SOIC to TO Adapter

## FEATURES:

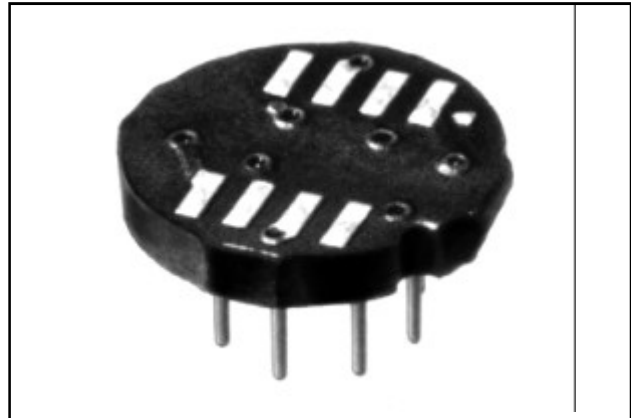
- 8-position SOIC footprint on the top and a circular, 8-pin TO can male pin footprint on the bottom. ICs now available only in 8-position SOIC packages can be readily mounted on boards having TO thru-hole footprints without having to redesign the board.
- Consult factory for mounting of consigned chips.

## SPECIFICATIONS:

- Adapter board is FR-4, .062 [1.58] thick, with 1 ounce Copper traces both sides.
- Male pin is Brass Alloy 360 1/2 hard per UNS C36000 ASTM-B16-85.
- Male pin plating is 200 $\mu$  [5.08 $\mu$ m] min. Tin per MIL-T-10727 Type 1 or Tin/Lead 90/10 MIL-P-81728 over 100 $\mu$  [2.54 $\mu$ m] Nickel per QQ-N-290.
- Operating temperature=221°F [105°C].

## MOUNTING CONSIDERATIONS:

- Suggested PCB hole size=.028  $\pm$  .003 [.71 $\pm$ .08] dia.



*Note: Aries specializes in custom design and production. In addition to the standard products shown on this page, special materials, platings, sizes, and configurations can be furnished, depending on quantities. Aries reserves the right to change product specifications without notice.*

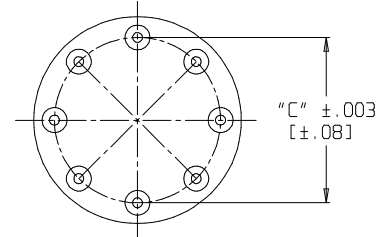
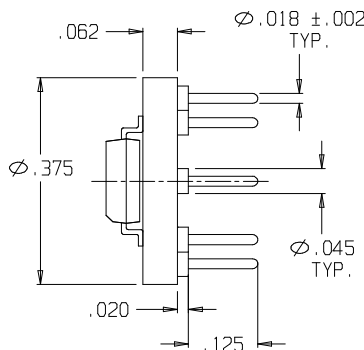
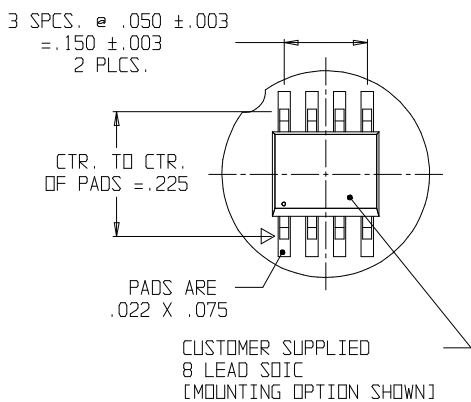
## ORDERING INFORMATION

Part Number	Dim. "C"
1109814	.200 [5.08]
8-301296-10	.300 [7.62]
8-305479-10	.270 [6.85]

## ALL DIMENSIONS: INCHES [MILLIMETERS]

All tolerances  $\pm$  .005 [.13] unless otherwise specified

DIP to TO adapter also available. Consult Data Sheet No. 18012.



**ARIES**  
ELECTRONICS, INC.  
<http://www.arieselec.com> • [info@arieselec.com](mailto:info@arieselec.com)

NORTH AMERICA  
Frenchtown, NJ USA  
TEL: (908) 996-6841  
FAX: (908) 996-3891



EUROPE  
TEL: +44 870 240 0249  
FAX: +44 871 919 6033  
[europe@arieselec.com](mailto:europe@arieselec.com)

18013  
REV.E