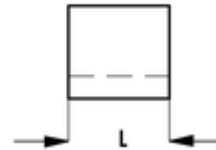
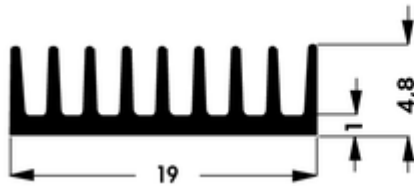
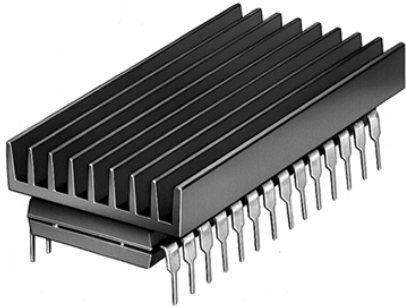


Kühlkörper für DIL-IC, PLCC und SMD / **ICK 40 B**



für DIL IC 14, 16, 24, 28, 36, 40 polig

Kenndaten ICK 40 B

| | |
|-----------------------|------------------|
| Gehäuseart | DIL-IC |
| für Gehäuse | 40 polig |
| Breite [mm] | 19 |
| Höhe [mm] | 4,8 |
| Bodenstärke [mm] | 1 |
| Länge [mm] | 51 |
| Wärmewiderstand [K/W] | 8,5 |
| Oberfläche | schwarz eloxiert |
| Länge [mm] | 51 |