



OXFORD ELECTRICAL PRODUCTS

pulse transformers

0800 316 6060

[get an online quote](#)

[get a catalogue delivered](#)

[download entire catalogue](#)

[can't find what you're looking for ??..](#)

[back to catalogue index](#)

[home](#)

Open or encapsulated p.c.b. mounting transformers. Designed for wide band and general pulse applications in particular thyristor and triac control systems, where they provide isolation between firing circuit and load.

SPECIFICATION

Proof voltage 2.8kV (PT42E 5.0kV)

Output voltage-time product 200V μ sec

Max. output pulse current 200mA (peak)

Bandwidth 3kHz – 1 MHz



Construction Single Section	Dip Varnish	Vacuum Impregnated	Encapsulated
Ratio	Part No.	Part No.	Part No.
1 : 1	PT 4	PT5	PT4E
1 : 1+1	PT 6	PT7	PT6E
1 : 1+1	PT103		
2 : 1	PT10	PT11	PT10E
2 : 1+1	PT8	PT9	PT8E
1 : 1+1/4			PT102
3 : 1	PT12		PT12E
8 : 1+1	PT601		
1 : 1 : 1	PT105		
2 SECTION		CLASS 2 INSULATION TO BS 415	
1 : 1			PT42E



Ratio	Lp (min)	L1 (typ) μ H	C (typ)pF	Rp (max)?	Rs (max) ?
1 : 1	3 mH	19	20	1.1	0.9
1 : 1+1	3 mH	8*	30*	1.4	2.6*
1 : 1+1	60 μ H				
2 : 1	12 mH	115	19	5.1	2.6
2 : 1+1	12 mH	30*	26*	4.0	4.2



1 : 1+1/4	20 mH
3 : 1	2.7 mH
8 : 1+1	30 mH
1 : 1 : 1	30 mH
1 : 1 (PT42E)	3mH

DIMENSIONS & PIN LAYOUT

LAYOUT

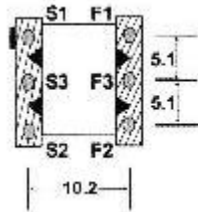
Body size excluding pins:

Open Type:

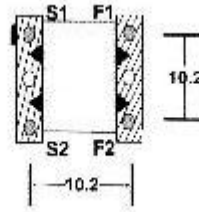
W13mm, H15mm, D13mm

Encapsulated Type:

W15mm, H16mm, D15mm



6 PIN
VERSION



4 PIN
VERSION

S1 – F1 Primary
S2 – F2 Secondary
S3 – F3 Secondary