

Distributed by:

JAMECO[®]
ELECTRONICS

www.Jameco.com ♦ 1-800-831-4242

The content and copyrights of the attached
material are the property of its owner.

Jameco Part Number 1376430

**Large Current Coil type EMI Filters (DNF)
SMD**

Japan

Series: **E**

Type: **A**



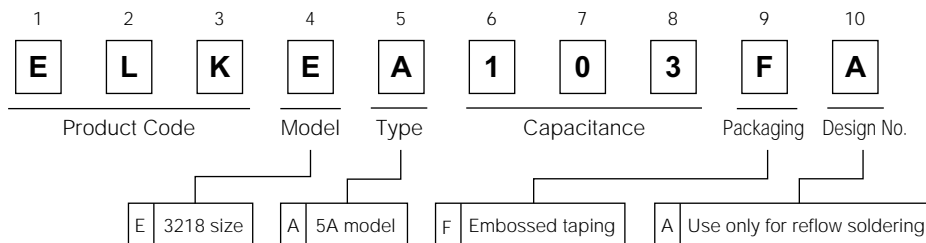
Features

- 3218 case size, 5 A rated current.
- No variation in attenuation characteristics as current changes.
- Stable P/N marking using laser technology.
- Marking is on the top face of product. Easy P/N marking confirmation after assembly on PWB.

Recommended Applications

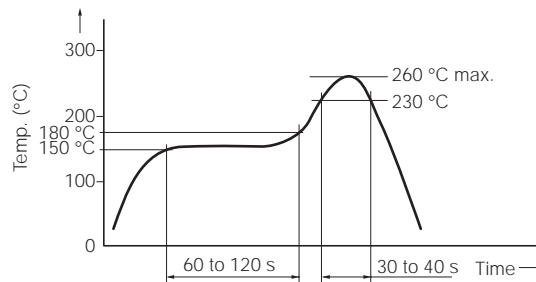
- Data lines, secondary power supply lines (DC lines) for game, digital AV and communications equipment.

Explanation of Part Numbers



Typical Specification

- Operating temperature : -20 to +85 °C
- Rated Voltage : DC 50 V (Except ELKEA333FA : DC25 V)
- Rated Current : DC 5 A
- Reliability characteristics endurance (High Temp.)
Soldering condition (reflow) : 85 °C 50 V 2 A 1000 h (Spec : 500 h)

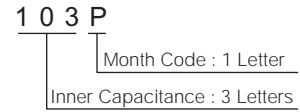
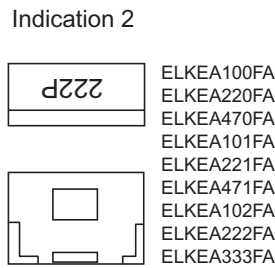
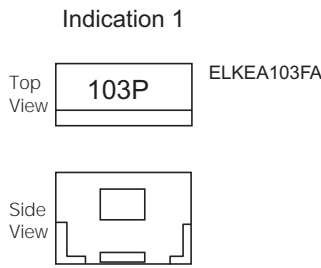


Standard Parts

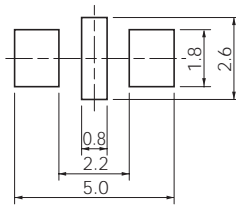
Part No.	Cut off frequency (MHz)	Inner Capacitance (pF typ.)	Rated Voltage (V)	Rated Current (A)	Indication	Min. Packaging unit (pcs.)
ELKEA100FA	500	10	50	5.0	100□	2000
ELKEA220FA	300	22			220□	
ELKEA470FA	150	47			470□	
ELKEA101FA	70	100			101□	
ELKEA221FA	30	220			221□	
ELKEA471FA	15	470			471□	
ELKEA102FA	7	1000			102□	
ELKEA222FA	3	2200			222□	
ELKEA103FA	0.5/DC	10000	25	5.0	103□	Indication 1
ELKEA333FA	0.2/DC	33000			333□	Indication 2

note1 : 4th letter (□) of marking indicates the Month Code.
note2 : Indication 1, 2 refer to Indication examples. (next page)

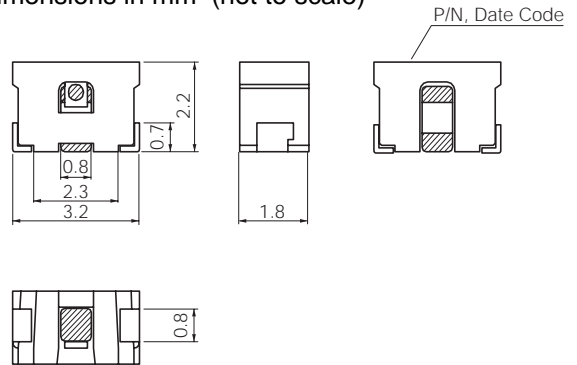
■ Indication Examples



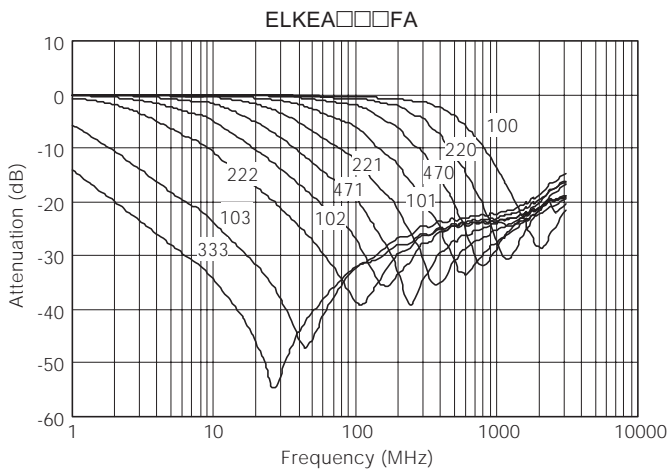
■ Land Pattern in mm (not to scale)



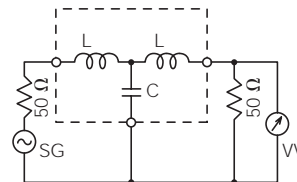
■ Dimensions in mm (not to scale)



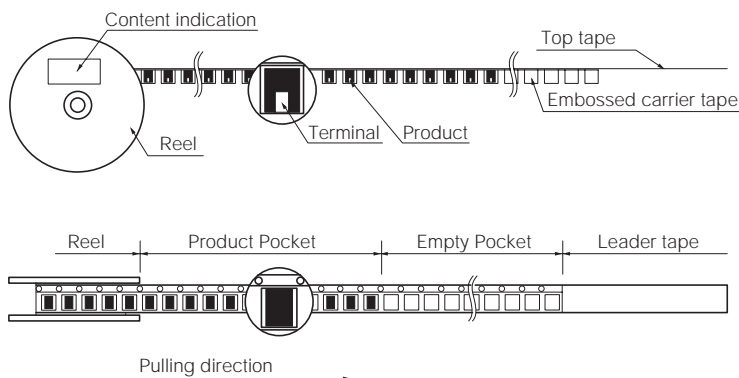
■ Performance characteristics (Reference)



■ Equivalent circuit, measurement block diagram



■ Packaging state



Reel Size : $\phi 178$
Q'ty : 2000 pcs./Reel
Packaging : Embossed taping