

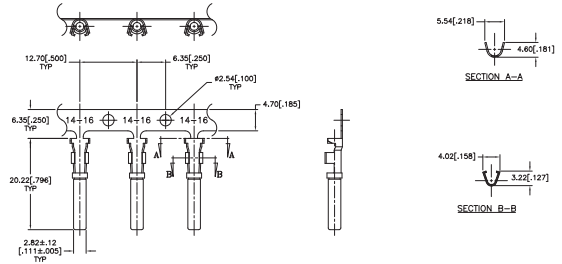
STAMPED AND FORMED CONTACTS, PG 1 of 2

Click on blue underlined part numbers to be taken to their spec sheets.

OPTIONS

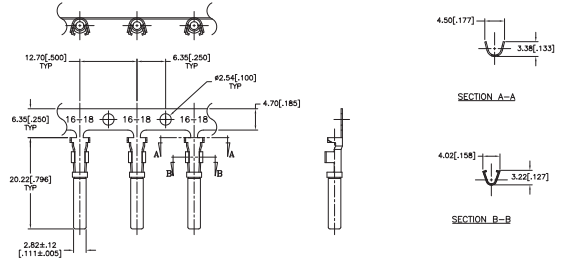
PART NUMBER: AT62-14-01XX
DESCRIPTION: CONTACT, SOCKET, STAMPED, SIZE 16

MATERIAL:
 CONTACT BODY: COPPER ALLOY
 HOOD: STAINLESS STEEL
PLATING SUFFIX CODE:
 XX=22 NICKEL PLATING
 XX=44 GOLD PLATING
CONTACT GENERAL DATA SPECIFICATION: S2-15217
AVAILABLE CRIMPERS: ATT-16-00, MFX-3950 & MFX-3953
CRIMPER SPECIFICATIONS: S2-15223 & S2-15224
CRIMP INFORMATION DRAWING: S2-15221 & S2-15222
CONTACTS PER REEL: APPROX. 4000 (PARTIAL REELS AVAILABLE)



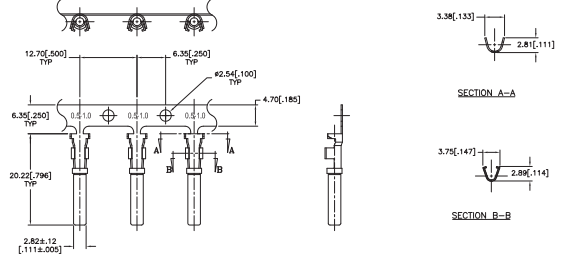
PART NUMBER: AT62-16-01XX
DESCRIPTION: CONTACT, SOCKET, STAMPED, SIZE 16

MATERIAL:
 CONTACT BODY: COPPER ALLOY
 HOOD: STAINLESS STEEL
PLATING SUFFIX CODE:
 XX=22 NICKEL PLATING
 XX=44 GOLD PLATING
CONTACT GENERAL DATA SPECIFICATION: S2-15217
AVAILABLE CRIMPERS: ATT-16-00, ATT-16-01, MFX-3950 & MFX-3953
CRIMPER SPECIFICATIONS: S2-15223 & S2-15224
CRIMP INFORMATION DRAWING: S2-15221 & S2-15222
CONTACTS PER REEL: APPROX. 4000 (PARTIAL REELS AVAILABLE)



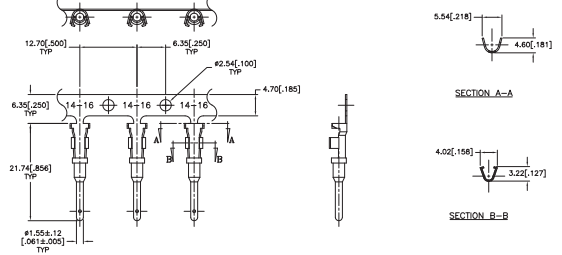
PART NUMBER: AT62-16-06XX
DESCRIPTION: CONTACT, SOCKET, STAMPED, SIZE 16

MATERIAL:
 CONTACT BODY: COPPER ALLOY
 HOOD: STAINLESS STEEL
PLATING SUFFIX CODE:
 XX=22 NICKEL PLATING
 XX=44 GOLD PLATING
CONTACT GENERAL DATA SPECIFICATION: S2-15217
AVAILABLE CRIMPERS: ATT-16-01, MFX-3950 & MFX-3953
CRIMPER SPECIFICATIONS: S2-15223 & S2-15224
CRIMP INFORMATION DRAWING: S2-15221 & S2-15222
CONTACTS PER REEL: APPROX. 4000 (PARTIAL REELS AVAILABLE)



PART NUMBER: AT60-14-01XX
DESCRIPTION: CONTACT, PIN, STAMPED, SIZE 16

MATERIAL: COPPER ALLOY
PLATING SUFFIX CODE:
 XX=22 NICKEL PLATING
 XX=44 GOLD PLATING
CONTACT GENERAL DATA SPECIFICATION: S2-15217
AVAILABLE CRIMPERS: ATT-16-00, MFX-3950 & MFX-3953
CRIMPER SPECIFICATIONS: S2-15223 & S2-15224
CRIMP INFORMATION DRAWING: S2-15221 & S2-15222
CONTACTS PER REEL: APPROX. 4000 (PARTIAL REELS AVAILABLE)



STAMPED AND FORMED CONTACTS, PG 2 of 2

Click on [blue underlined](#) part numbers to be taken to their spec sheets.

OPTIONS

PART NUMBER: AT60-16-01XX

DESCRIPTION: CONTACT, PIN, STAMPED, SIZE 16

MATERIAL: COPPER ALLOY

PLATING SUFFIX CODE:

XX=22 NICKEL PLATING

XX=44 GOLD PLATING

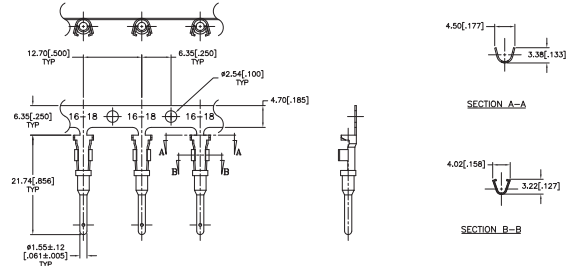
CONTACT GENERAL DATA SPECIFICATION: S2-15217

AVAILABLE CRIMPERS: ATT-16-00, ATT-16-01, MFX-3950 & MFX-3953

CRIMPER SPECIFICATIONS: S2-15223 & S2-15224

CRIMP INFORMATION DRAWING: S2-15221 & S2-15222

CONTACTS PER REEL: APPROX. 4000 (PARTIAL REELS AVAILABLE)



PART NUMBER: AT60-16-06XX

DESCRIPTION: CONTACT, PIN, STAMPED, SIZE 16

MATERIAL: COPPER ALLOY

PLATING SUFFIX CODE:

XX=22 NICKEL PLATING

XX=44 GOLD PLATING

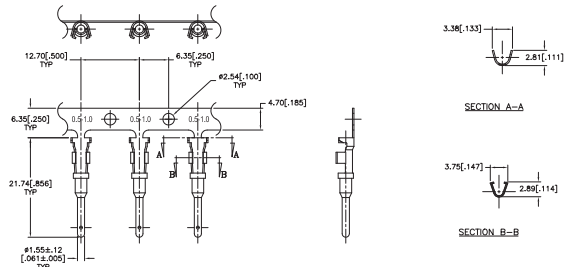
CONTACT GENERAL DATA SPECIFICATION: S2-15217

AVAILABLE CRIMPERS: ATT-16-01, MFX-3950 & MFX-3953

CRIMPER SPECIFICATIONS: S2-15223 & S2-15224

CRIMP INFORMATION DRAWING: S2-15221 & S2-15222

CONTACTS PER REEL: APPROX. 4000 (PARTIAL REELS AVAILABLE)



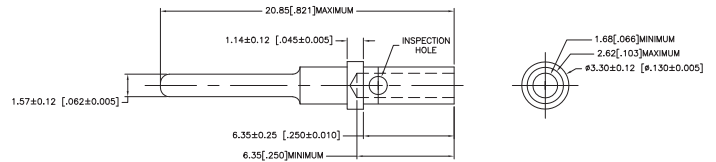
SOLID/MACHINED CONTACTS

Click on blue underlined part numbers to be taken to their spec sheets.

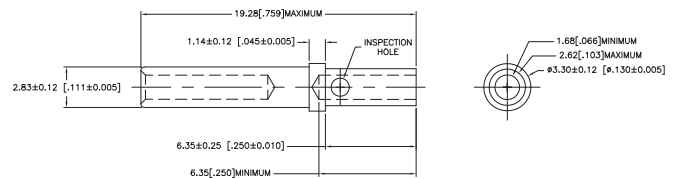
OPTIONS

MILITARY-STYLE

PART NUMBER: [AT60-202-16XX](#)
DESCRIPTION: CONTACT, PIN, SOLID MACHINED, SIZE 16
MATERIAL: COPPER ALLOY
PLATING SUFFIX CODE:
 XX=141 NICKEL PLATING
 XX=31 GOLD PLATING
CONTACT GENERAL DATA SPECIFICATION: S2-15217
AVAILABLE CRIMPERS: CA-5D12 & CA-5E12
CRIMPER SPECIFICATIONS: S2-15219 & S2-15220
CRIMP INFORMATION DRAWING: S2-15218

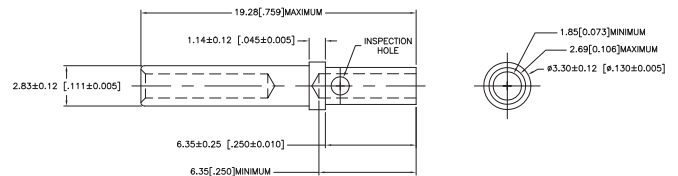


PART NUMBER: [AT62-201-16XX](#)
DESCRIPTION: CONTACT, SOCKET, SOLID MACHINED, SIZE 16
MATERIAL:
 CONTACT BODY: COPPER ALLOY
 HOOD: STAINLESS STEEL
PLATING SUFFIX CODE:
 XX=141 NICKEL PLATING
 XX=31 GOLD PLATING
CONTACT GENERAL DATA SPECIFICATION: S2-15217
AVAILABLE CRIMPERS: CA-5D12 & CA-5E12
CRIMPER SPECIFICATIONS: S2-15219 & S2-15220
CRIMP INFORMATION DRAWING: S2-15218

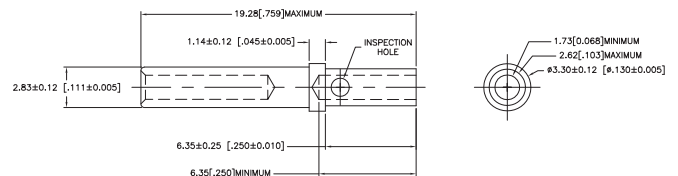


ROCKSOLID™ CONTACTS

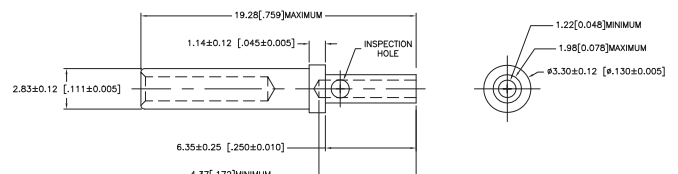
PART NUMBER: [65-54942-14](#)
DESCRIPTION: CONTACT, SOCKET, ROCKSOLID, SIZE 16
AWG RANGE: 14AWG
MATERIAL: COPPER ALLOY
PLATING: GOLD
CONTACT GENERAL DATA SPECIFICATION: S2-15217
AVAILABLE CRIMPERS: CA-5D12 & CA-5E12
CRIMPER SPECIFICATIONS: S2-15219 & S2-15220
CRIMP INFORMATION DRAWING: S2-15218



PART NUMBER: [65-54942-16](#)
DESCRIPTION: CONTACT, SOCKET, ROCKSOLID, SIZE 16
AWG RANGE: 16AWG
MATERIAL: COPPER ALLOY
PLATING: GOLD
CONTACT GENERAL DATA SPECIFICATION: S2-15217
AVAILABLE CRIMPERS: CA-5D12 & CA-5E12
CRIMPER SPECIFICATIONS: S2-15219 & S2-15220
CRIMP INFORMATION DRAWING: S2-15218



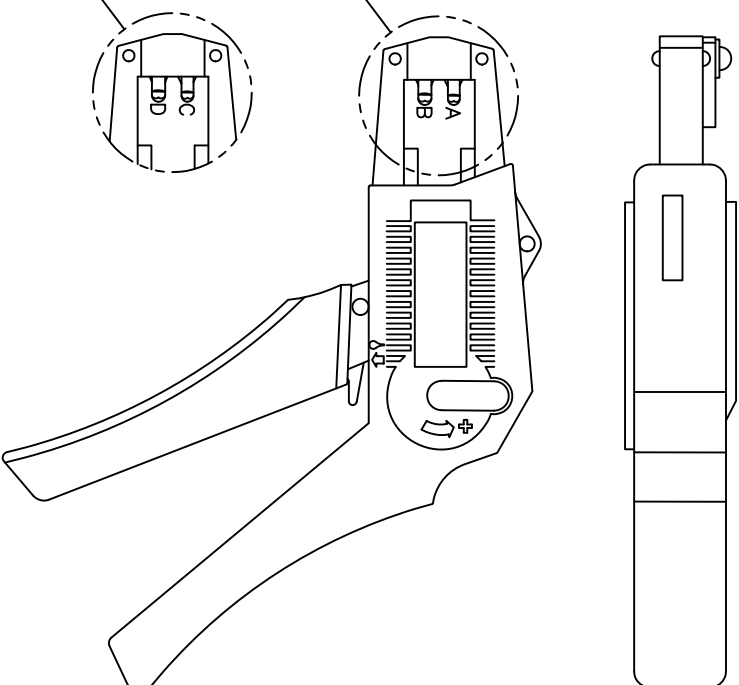
PART NUMBER: [65-54942-20](#)
DESCRIPTION: CONTACT, SOCKET, ROCKSOLID, SIZE 16
AWG RANGE: 20AWG
MATERIAL: COPPER ALLOY
PLATING: GOLD
CONTACT GENERAL DATA SPECIFICATION: S2-15217
AVAILABLE CRIMPERS: CA-5D12 & CA-5E12
CRIMPER SPECIFICATIONS: S2-15219 & S2-15220
CRIMP INFORMATION DRAWING: S2-15218



ATT-16-00 WITH CAVITY A & B

CONTACT P/N:	INSULATION ϕ	CAVITY	WIRE SIZE
AT60-16-01**	PIN .075 - .140	B	1.5mm ²
AT62-16-01**	SOC [1.91 - 3.56]	A	16AWG
		A	1.0mm ²
AT60-14-01**	PIN .095 - .150	B	14AWG
AT62-14-01**	SOC [2.41 - 3.81]	B	2.0mm ²
		B	1.5mm ²
		A	1.5mm ²
		A	16AWG
		A	1.0mm ²
AT60-16-06**	PIN .055 - .100	A	16AWG
AT62-16-06**	SOC [1.40 - 2.54]	A	1.0mm ²

CAVITY VIEW OF
CRIMPER NUMBER
ATT-16-00



CAVITY VIEW OF
CRIMPER NUMBER
ATT-16-01

USE CRIMPER NUMBER:
ATT-16-01 WITH CAVITY C & D



CONTACT P/N:	INSULATION ϕ	CAVITY	WIRE SIZE
AT60-16-01**	.075 - .140	D	18AWG
AT62-16-01**	[.1.91 - 3.56]	D	.75mm ²
AT60-16-06**	.055 - .100	D	18AWG
AT62-16-06**	[1.40 - 2.54]	D	.75mm ²
		C	.50mm ²

NOTES (UNLESS OTHERWISE SPECIFIED):

1. ALL DIMENSIONS IN INCHES [MILLIMETERS]
2. FOR PLATING CODES ** SEE CONTACT DATA DRAWINGS.
3. THIS TOOL IS FOR CRIMPING SIZE 16 CONTACTS ONLY TO WIRES LISTED IN THE CHARTS.
4. DEUTSCH IPD CROSS REFERENCE PART NUMBERS ARE DTT-16-00 AND DTT-16-01.

REVISIONS				
REV	ECO	DESCRIPTION	DATE	BY
A1	-	RELEASE NUMBER 016571	6/12/09	B.D.B. M.R.F.

REVISIONS

QUANTITY	PART NUMBER	DESCRIPTION	UNIT
MATERIALS LIST			
<p>UNLESS OTHERWISE SPECIFIED</p> <p>1) All dimensions are in inches. 2) Tolerances are as follows: ±1/64 3. H. DEC 5.001 4) Finish: 16 mils. max. Per SS-20020</p> <p>5) Note Reference =  MATERIAL SPECIFICATIONS = </p>			
SIGNATURES		DATE	
DRAWN	BRUNN	6/8/09	
CHECKED	FORC	6/8/09	
DRAWN	BRUNN		
APPROVAL	BRUNN	6/8/09	
<p>CUSTOMER:</p> <p>THE USE OF THIS DOCUMENT IS UNLIMITED. DESIGN FEATURES, SPEC DATA SHOWN HEREON ARE THE PROPERTY OF SINE SYSTEMS CORPORATION. NO REPRODUCTION, REUSE OR MODIFICATION OF THIS DOCUMENT, INCLUDING RIGHTS MAY CONTAIN LIMITED RIGHTS DATA</p>			
SIZE FROM DRAWING NO:		INSTRUCTIONS, ATT-16-00 & 01 CRIMPER, HAND, STAMPED CONTACTS	
SCALE	B 1/64/44	S2-15223	REVISION
NONE	NONE	S2-15223	A
SHEET	1	OF	1

ALL REFERENCES TO DEUTSCH PRODUCTS OR SPECIFICATIONS ARE FOR COMPARISON PURPOSES ONLY, AND REFER TO DEUTSCH INDUSTRIAL PRODUCTS.

REVISIONS				
REV	ZONE	ECO	DESCRIPTION	DATE
A1	-	-	RELEASE NUMBER 016571	6/12/09
BY	APP			
B.D.B.	M.F.F.			

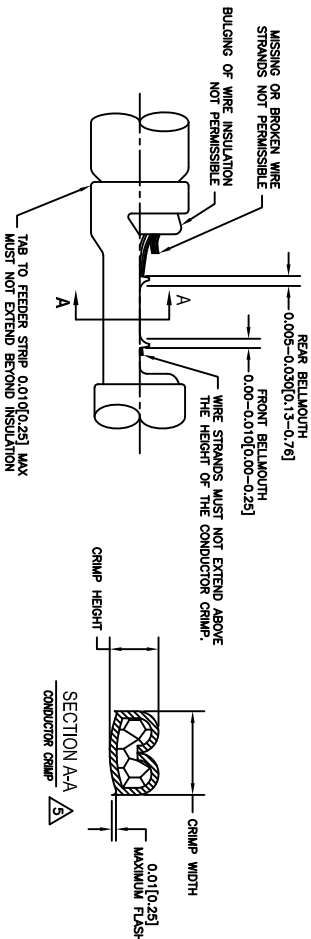
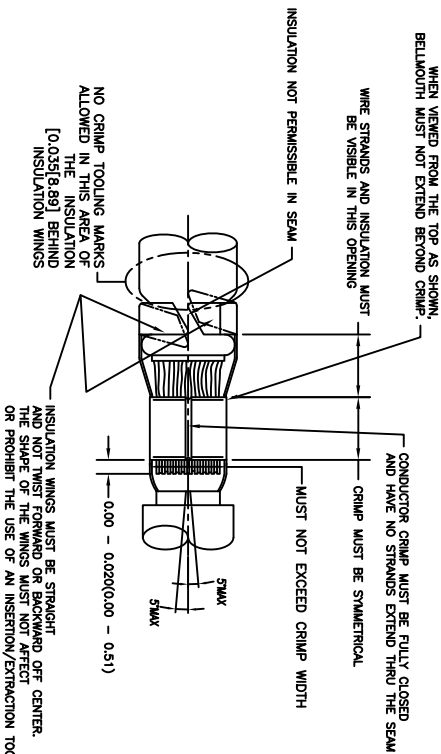
STAMPED CONTACT PART NUMBER 1005=PIN 1006=SOCKET	SIZE	CONDUCTOR WIRE SIZE	CRIMP HEIGHT	CRIMP WIDTH	CONDUCTOR PUNCH NUMBER	CONDUCTOR ANVIL NUMBER	CRIMP TENSILE REFERENCE
A780-14-011x A782-14-011x INSULATION RANGE 0.095-0.150(2.11-3.81)	16	14 AWG	0.055(1.40)	0.094(2.39)	A177-002-0200	A177-101-0200	28(111)
		2.00mm ²	0.055(1.40)	0.094(2.39)			
		1.50mm ²	0.055(1.35)	0.094(2.39)			
		16 AWG	0.050(1.27)	0.094(2.39)			
		1.00mm ²	0.050(1.27)	0.094(2.39)			
A780-16-011x A782-16-011x INSULATION RANGE 0.075-0.140(1.91-3.56)	16	18 AWG	0.048(1.24)	0.094(2.39)	A177-002-0200	A177-101-0200	28(111)
		0.75mm ²	0.048(1.22)	0.094(2.39)			
		14 AWG	0.055(1.40)	0.094(2.39)			
		2.00mm ²	0.055(1.40)	0.094(2.39)			
		1.50mm ²	0.053(1.35)	0.094(2.39)			
A780-16-060x A782-16-060x INSULATION RANGE 0.055-0.100(1.40-2.54)	16	18 AWG	0.048(1.24)	0.094(2.39)	A177-003-0200	A177-103-0200	28(111)
		1.00mm ²	0.050(1.27)	0.094(2.39)			
		16 AWG	0.050(1.27)	0.079(2.01)			
		0.75mm ²	0.048(1.22)	0.079(2.01)			
		20 AWG	0.048(1.22)	0.079(2.01)			

CROSS REFERENCE

INSULATION DIAMETER RANGE	INSULATION PUNCH NUMBER	INSULATION ANVIL NUMBER
0.120-0.150	A177-210-0200	A177-316-0200
0.105-0.125	A177-211-0200	A177-317-0200
0.085-0.111	A177-213-0200	A177-318-0200
0.075-0.105	A177-214-0200	A177-319-0200
0.065-0.094	A177-215-0200	A177-320-0200
0.050-0.075	A177-216-0200	A177-321-0200

NOTES: UNLESS OTHERWISE SPECIFIED

1. ALL DIMENSIONS ARE IN INCHES(mm).
2. FORCES ARE IN POUNDS(LBS) AND NEWTONS(N).
3. "X"= PLATING SUFFX. SEE INDIVIDUAL CONTACT DRAWING.
4. WIRE STRIP LENGTH: 0.175±0.029(4.43±0.64). BROKEN OR MISSING CONDUCTOR STRANDS ARE NOT ACCEPTABLE.
5. USE A BLADE MICROMETER (0.0002-54) MIN SPINDLE AND 0.060(0.010)(1.50(0.040) ANVIL) TO MEASURE THE CONDUCTOR CRIMP. SEE SECTION AA.
6. CRIMP TENSILE STRENGTH IS DETERMINED AT A PULL RATE SPEED OF 1.00 INCH(25.4) PER MINUTE. INSULATION WINGS ARE REMOVED FOR TEST. ACTUAL CRIMP TENSILE STRENGTH DEPENDS ON WIRE/CONDUCTOR SIZE. VALUES ON THIS SPECIFICATION ARE FOR REFERENCE ONLY.
7. INSULATION DIAMETER RANGE IS DETERMINED BY CONNECTOR AND ITS WIRE SEAL SIZE. SEE CONNECTOR DRAWING FOR INSULATION RANGE.
8. INSULATION CRIMP DIAMETER SHOULD BE THE EQUAL OR LESS THAN THE DIAMETER OF THE WIRE INSULATION (HARD OR TEFLON INSULATION MAY BE AN EXCEPTION). INSULATION CRIMP SHALL NOT AFFECT REMOVAL TOOL PERFORMANCE AND SHALL NOT DAMAGE CONNECTOR CROMMET SEAL.
9. CONDUCTOR TYPE ARE PER SAE J128(AWG) AND ISO 6722(METRIC)
10. FOR CONTACT MATERIAL AND PERFORMANCE DATA, SEE DRAWING S2-15217.
11. REFER TO S2-15223 AND S2-15224 AND CROSS REFERENCE CHARTS FOR CRIMP TOOL DATA.



ALL REFERENCES TO DEUTSCH PRODUCTS OR SPECIFICATIONS ARE FOR COMPARISON PURPOSES ONLY, AND REFER TO DEUTSCH INDUSTRIAL PRODUCTS.

PART NUMBER		DESCRIPTION		ITEM
MATERIALS LIST				
QUANTITY				
UNLESS OTHERWISE SPECIFIED				
1) All dimensions are in inches.				
2) References are as follows:				
3) Pl. DEC 20.00 to Provisions 31/14				
4) Pl. DEC 20.00 to Provisions 31/14				
5) Reduction Standards Per:				
a) SAE J128				
b) SAE J128				
c) SAE J128				
d) SAE J128				
e) SAE J128				
f) SAE J128				
g) SAE J128				
h) SAE J128				
i) SAE J128				
j) SAE J128				
k) SAE J128				
l) SAE J128				
m) SAE J128				
n) SAE J128				
o) SAE J128				
p) SAE J128				
q) SAE J128				
r) SAE J128				
s) SAE J128				
t) SAE J128				
u) SAE J128				
v) SAE J128				
w) SAE J128				
x) SAE J128				
y) SAE J128				
z) SAE J128				
AA) SAE J128				
AB) SAE J128				
AC) SAE J128				
AD) SAE J128				
AE) SAE J128				
AF) SAE J128				
AG) SAE J128				
AH) SAE J128				
AI) SAE J128				
AJ) SAE J128				
AK) SAE J128				
AL) SAE J128				
AM) SAE J128				
AN) SAE J128				
AO) SAE J128				
AP) SAE J128				
AQ) SAE J128				
AR) SAE J128				
AS) SAE J128				
AT) SAE J128				
AU) SAE J128				
AV) SAE J128				
AW) SAE J128				
AX) SAE J128				
AY) SAE J128				
AZ) SAE J128				
BA) SAE J128				
BB) SAE J128				
BC) SAE J128				
BD) SAE J128				
BE) SAE J128				
BF) SAE J128				
BG) SAE J128				
BH) SAE J128				
BI) SAE J128				
BJ) SAE J128				
BK) SAE J128				
BL) SAE J128				
BM) SAE J128				
BN) SAE J128				
BO) SAE J128				
BP) SAE J128				
BQ) SAE J128				
BR) SAE J128				
BS) SAE J128				
BT) SAE J128				
BU) SAE J128				
BV) SAE J128				
BW) SAE J128				
BX) SAE J128				
BY) SAE J128				
BZ) SAE J128				
CA) SAE J128				
CB) SAE J128				
CC) SAE J128				
CD) SAE J128				
CE) SAE J128				
CF) SAE J128				
CG) SAE J128				
CH) SAE J128				
CI) SAE J128				
CJ) SAE J128				
CK) SAE J128				
CL) SAE J128				
CM) SAE J128				
CN) SAE J128				
CO) SAE J128				
CP) SAE J128				
CQ) SAE J128				
CR) SAE J128				
CS) SAE J128				
CT) SAE J128				
CU) SAE J128				
CV) SAE J128				
CW) SAE J128				
CX) SAE J128				
CY) SAE J128				
CZ) SAE J128				
DA) SAE J128				
DB) SAE J128				
DC) SAE J128				
DD) SAE J128				
DE) SAE J128				
DF) SAE J128				
DG) SAE J128				
DH) SAE J128				
DI) SAE J128				
DJ) SAE J128				
DK) SAE J128				
DL) SAE J128				
DM) SAE J128				
DN) SAE J128				
DO) SAE J128				
DP) SAE J128				
DQ) SAE J128				
DR) SAE J128				
DS) SAE J128				
DT) SAE J128				
DU) SAE J128				
DV) SAE J128				
DW) SAE J128				
DX) SAE J128				
DY) SAE J128				
DZ) SAE J128				
EA) SAE J128				
EB) SAE J128				
EC) SAE J128				
ED) SAE J128				
EE) SAE J128				
EF) SAE J128				
EG) SAE J128				
EH) SAE J128				
EI) SAE J128				
EJ) SAE J128				
EK) SAE J128				
EL) SAE J128				
EM) SAE J128				
EN) SAE J128				
EO) SAE J128				
EP) SAE J128				
EQ) SAE J128				
ER) SAE J128				
ES) SAE J128				
ET) SAE J128				
EU) SAE J128				
EV) SAE J128				
EW) SAE J128				
EX) SAE J128				
EY) SAE J128				
EZ) SAE J128				
FA) SAE J128				
FB) SAE J128				
FC) SAE J128				
FD) SAE J128				
FE) SAE J128				
FF) SAE J128				

REVISIONS				
REV	ZONE	ECO	DESCRIPTION	DATE
A1	-	-	RELEASE NUMBER 016571	6/12/09
BY	APP			
B.D.B.	M.F.F.			

STAMPED CONTACT PART NUMBER 1000=PIN 1000=SOCKET	SIZE	CRIMP HEIGHT	CRIMP WIDTH	CONDUCTOR PUNCH NUMBER	CONDUCTOR ANVIL NUMBER	CRIMP TENSILE REFERENCE
A160-14-011x A162-14-011x INSULATION RANGE 0.095-0.150(2.41-3.81)	14 AWG	0.055(1.40)	0.094(2.39)			
	2.00mm ²	0.055(1.40)	0.094(2.39)			
	1.50mm ²	0.053(1.35)	0.094(2.39)			
	16 AWG	0.050(1.27)	0.094(2.39)	A117-083-0200	A117-183-0200	25(111)
A160-16-011x A162-16-011x INSULATION RANGE 0.075-0.140(1.91-3.56)	16 AWG	0.050(1.27)	0.094(2.39)			
	1.00mm ²	0.050(1.27)	0.094(2.39)			
	18 AWG	0.049(1.24)	0.094(2.39)			
	0.75mm ²	0.049(1.24)	0.094(2.39)			
A160-16-065x A162-16-065x INSULATION RANGE 0.055-0.100(1.40-2.54)	16 AWG	0.050(1.27)	0.079(2.01)			
	1.00mm ²	0.050(1.27)	0.079(2.01)			
	18 AWG	0.049(1.24)	0.079(2.01)			
	20 AWG	0.048(1.22)	0.079(2.01)			

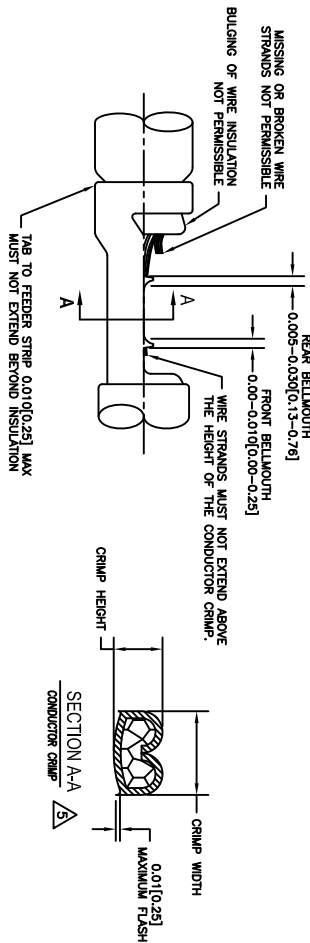
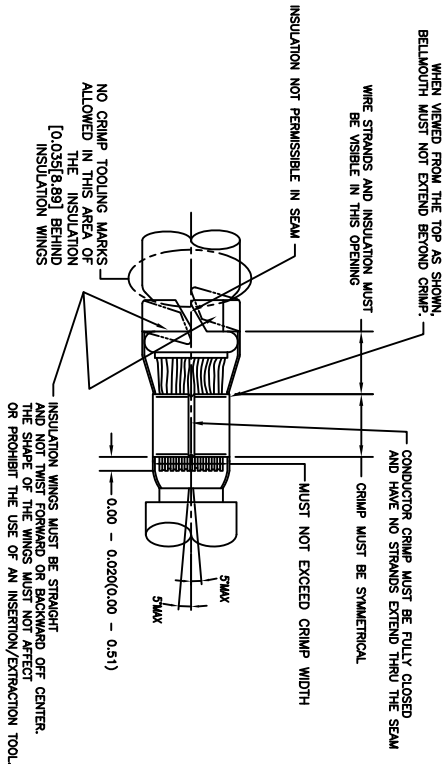
CROSS REFERENCE

INSULATION DIAMETER RANGE	INSULATION PUNCH NUMBER	INSULATION ANVIL NUMBER
0.120-0.150	A117-225-0200	A117-325-0200
0.105-0.125	A117-226-0200	A117-326-0200
0.085-0.111	A117-227-0200	A117-327-0200
0.075-0.105	A117-228-0200	A117-328-0200
0.063-0.094	A117-229-0200	A117-329-0200
0.050-0.075	A117-230-0200	A117-330-0200

SINE PART NUMBER	DEUTSCH PART NUMBER
MFX-3953	DCT1620-02-00
A117-083-0200	1017-083-0200
A117-082-0200	1017-082-0200
A117-183-0200	1017-183-0200
A117-182-0200	1017-182-0200
A117-225-0200	1017-225-0200
A117-226-0200	1017-226-0200
A117-227-0200	1017-227-0200
A117-228-0200	1017-228-0200
A117-229-0200	1017-229-0200
A117-230-0200	1017-230-0200
A117-325-0200	1017-325-0200
A117-326-0200	1017-326-0200
A117-327-0200	1017-327-0200
A117-328-0200	1017-328-0200
A117-329-0200	1017-329-0200
A117-330-0200	1017-330-0200

NOTES: UNLESS OTHERWISE SPECIFIED

1. ALL DIMENSIONS ARE IN INCHES(mm).
2. FORCES ARE IN POUNDS(LBS) AND NEWTONS(N).
3. "X"= PLATING SUFFX. SEE INDIVIDUAL CONTACT DRAWING.
4. WIRE STRIP LENGTH: 0.175±0.029(4.43±0.64). BROKEN OR MISSING CONDUCTOR STRANDS ARE NOT ACCEPTABLE.
5. USE A BLADE MICROMETER (0.100(2.54) MIN SPINDLE AND 0.060(0.010(1.50(0.040) ANVIL) TO MEASURE THE CONDUCTOR CRIMP. SEE SECTION AA.
6. CRIMP TENSILE STRENGTH IS DETERMINED AT A PULL RATE SPEED OF 1.00 INCH(25.4) PER MINUTE. INSULATION WINGS ARE REMOVED FOR TEST. ACTUAL CRIMP TENSILE STRENGTH DEPENDS ON WIRE/CONDUCTOR SIZE. VALUES ON THIS SPECIFICATION ARE FOR REFERENCE ONLY.
7. INSULATION DIAMETER RANGE IS DETERMINED BY CONNECTOR AND ITS WIRE SEAL SIZE. SEE CONNECTOR DRAWING FOR INSULATION RANGE.
8. INSULATION CRIMP DIAMETER SHOULD BE THE EQUAL OR LESS THAN THE DIAMETER OF THE WIRE INSULATION (HARD OR TEFLON INSULATION MAY BE AN EXCEPTION). INSULATION CRIMP SHALL NOT AFFECT REMOVAL TOOL PERFORMANCE AND SHALL NOT DAMAGE CONNECTOR CROMMET SEAL.
9. CONDUCTOR TYPE ARE PER SAEJ1128(AWG) AND ISO 6122(METRIC)
10. FOR CONTACT MATERIAL AND PERFORMANCE DATA, SEE DRAWING S2-15217.
11. REFER TO S2-15223 AND S2-15224 AND CROSS REFERENCE CHARTS FOR CRIMP TOOL DATA.

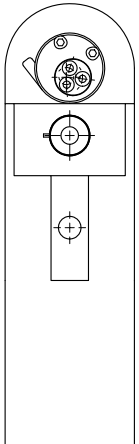


ALL REFERENCES TO DEUTSCH PRODUCTS OR SPECIFICATIONS ARE FOR COMPARISON PURPOSES ONLY, AND REFER TO DEUTSCH INDUSTRIAL PRODUCTS.

QUANTITY		PART NUMBER		DESCRIPTION		ITEM
MATERIALS LIST						
UNLESS OTHERWISE SPECIFIED		SIGNATURES		DATE		
1) All dimensions are in inches.		DRAWN: POKR		4/7/09		
2) 1/16 DEC 50.00 1/32 Precision 51/64		CHECKED: POKR		6/8/09		
3) 1/32 DEC 50.00 1/64 Precision 51/64		APPROVED: BERNU		6/8/09		
4) Hole Reference = A		APPROVAL: BERNU		6/8/09		
MATERIAL SPECIFICATIONS:		CUSTOMER:				
N/A		THE USE OF THIS DOCUMENT IS SPECIFICALLY FOR THE PART SHOWN HEREON AND THE ALL DIMENSIONS ARE SUBJECT TO NORMAL MANUFACTURING VARIATIONS. ANY OTHER DIMENSIONS ARE SUBJECT TO NORMAL MANUFACTURING VARIATIONS. ANY OTHER DIMENSIONS ARE SUBJECT TO NORMAL MANUFACTURING VARIATIONS. ANY OTHER DIMENSIONS ARE SUBJECT TO NORMAL MANUFACTURING VARIATIONS. ANY OTHER DIMENSIONS ARE SUBJECT TO NORMAL MANUFACTURING VARIATIONS. ANY OTHER DIMENSIONS ARE SUBJECT TO NORMAL MANUFACTURING VARIATIONS. ANY OTHER DIMENSIONS ARE SUBJECT TO NORMAL MANUFACTURING VARIATIONS. ANY OTHER DIMENSIONS ARE SUBJECT TO NORMAL MANUFACTURING VARIATIONS. ANY OTHER DIMENSIONS ARE SUBJECT TO NORMAL MANUFACTURING VARIATIONS. ANY OTHER DIMENSIONS ARE SUBJECT TO NORMAL MANUFACTURING VARIATIONS. ANY OTHER DIMENSIONS ARE SUBJECT TO NORMAL MANUFACTURING VARIATIONS. ANY OTHER DIMENSIONS ARE SUBJECT TO NORMAL MANUFACTURING VARIATIONS. ANY OTHER DIMENSIONS ARE SUBJECT TO NORMAL MANUFACTURING VARIATIONS. ANY OTHER DIMENSIONS ARE SUBJECT TO NORMAL MANUFACTURING VARIATIONS. ANY OTHER DIMENSIONS ARE SUBJECT TO NORMAL MANUFACTURING VARIATIONS. ANY OTHER DIMENSIONS ARE SUBJECT TO NORMAL MANUFACTURING VARIATIONS. ANY OTHER DIMENSIONS ARE SUBJECT TO NORMAL MANUFACTURING VARIATIONS. ANY OTHER DIMENSIONS ARE SUBJECT TO NORMAL MANUFACTURING VARIATIONS. ANY OTHER DIMENSIONS ARE SUBJECT TO NORMAL MANUFACTURING VARIATIONS. ANY OTHER DIMENSIONS ARE SUBJECT TO NORMAL MANUFACTURING VARIATIONS. ANY OTHER DIMENSIONS ARE SUBJECT TO NORMAL MANUFACTURING VARIATIONS. ANY OTHER DIMENSIONS ARE SUBJECT TO NORMAL MANUFACTURING VARIATIONS. ANY OTHER DIMENSIONS ARE SUBJECT TO NORMAL MANUFACTURING VARIATIONS. ANY OTHER DIMENSIONS ARE SUBJECT TO NORMAL MANUFACTURING VARIATIONS. ANY OTHER DIMENSIONS ARE SUBJECT TO NORMAL MANUFACTURING VARIATIONS. ANY OTHER DIMENSIONS ARE SUBJECT TO NORMAL MANUFACTURING VARIATIONS. ANY OTHER DIMENSIONS ARE SUBJECT TO NORMAL MANUFACTURING VARIATIONS. ANY OTHER DIMENSIONS ARE SUBJECT TO NORMAL MANUFACTURING VARIATIONS. ANY OTHER DIMENSIONS ARE SUBJECT TO NORMAL MANUFACTURING VARIATIONS. ANY OTHER DIMENSIONS ARE SUBJECT TO NORMAL MANUFACTURING VARIATIONS. ANY OTHER DIMENSIONS ARE SUBJECT TO NORMAL MANUFACTURING VARIATIONS. ANY OTHER DIMENSIONS ARE SUBJECT TO NORMAL MANUFACTURING VARIATIONS. ANY OTHER DIMENSIONS ARE SUBJECT TO NORMAL MANUFACTURING VARIATIONS. ANY OTHER DIMENSIONS ARE SUBJECT TO NORMAL MANUFACTURING VARIATIONS. ANY OTHER DIMENSIONS ARE SUBJECT TO NORMAL MANUFACTURING VARIATIONS. ANY OTHER DIMENSIONS ARE SUBJECT TO NORMAL MANUFACTURING VARIATIONS. ANY OTHER DIMENSIONS ARE SUBJECT TO NORMAL MANUFACTURING VARIATIONS. ANY OTHER DIMENSIONS ARE SUBJECT TO NORMAL MANUFACTURING VARIATIONS. ANY OTHER DIMENSIONS ARE SUBJECT TO NORMAL MANUFACTURING VARIATIONS. ANY OTHER DIMENSIONS ARE SUBJECT TO NORMAL MANUFACTURING VARIATIONS. ANY OTHER DIMENSIONS ARE SUBJECT TO NORMAL MANUFACTURING VARIATIONS. ANY OTHER DIMENSIONS ARE SUBJECT TO NORMAL MANUFACTURING VARIATIONS. ANY OTHER DIMENSIONS ARE SUBJECT TO NORMAL MANUFACTURING VARIATIONS. ANY OTHER DIMENSIONS ARE SUBJECT TO NORMAL MANUFACTURING VARIATIONS. ANY OTHER DIMENSIONS ARE SUBJECT TO NORMAL MANUFACTURING VARIATIONS. ANY OTHER DIMENSIONS ARE SUBJECT TO NORMAL MANUFACTURING VARIATIONS. ANY OTHER DIMENSIONS ARE SUBJECT TO NORMAL MANUFACTURING VARIATIONS. ANY OTHER DIMENSIONS ARE SUBJECT TO NORMAL MANUFACTURING VARIATIONS. ANY OTHER DIMENSIONS ARE SUBJECT TO NORMAL MANUFACTURING VARIATIONS. ANY OTHER DIMENSIONS ARE SUBJECT TO NORMAL MANUFACTURING VARIATIONS. ANY OTHER DIMENSIONS ARE SUBJECT TO NORMAL MANUFACTURING VARIATIONS. ANY OTHER DIMENSIONS ARE SUBJECT TO NORMAL MANUFACTURING VARIATIONS. ANY OTHER DIMENSIONS ARE SUBJECT TO NORMAL MANUFACTURING VARIATIONS. ANY OTHER DIMENSIONS ARE SUBJECT TO NORMAL MANUFACTURING VARIATIONS. ANY OTHER DIMENSIONS ARE SUBJECT TO NORMAL MANUFACTURING VARIATIONS. ANY OTHER DIMENSIONS ARE SUBJECT TO NORMAL MANUFACTURING VARIATIONS. ANY OTHER DIMENSIONS ARE SUBJECT TO NORMAL MANUFACTURING VARIATIONS. ANY OTHER DIMENSIONS ARE SUBJECT TO NORMAL MANUFACTURING VARIATIONS. ANY OTHER DIMENSIONS ARE SUBJECT TO NORMAL MANUFACTURING VARIATIONS. ANY OTHER DIMENSIONS ARE SUBJECT TO NORMAL MANUFACTURING VARIATIONS. ANY OTHER DIMENSIONS ARE SUBJECT TO NORMAL MANUFACTURING VARIATIONS. ANY OTHER DIMENSIONS ARE SUBJECT TO NORMAL MANUFACTURING VARIATIONS. ANY OTHER DIMENSIONS ARE SUBJECT TO NORMAL MANUFACTURING VARIATIONS. ANY OTHER DIMENSIONS ARE SUBJECT TO NORMAL MANUFACTURING VARIATIONS. ANY OTHER DIMENSIONS ARE SUBJECT TO NORMAL MANUFACTURING VARIATIONS. ANY OTHER DIMENSIONS ARE SUBJECT TO NORMAL MANUFACTURING VARIATIONS. ANY OTHER DIMENSIONS ARE SUBJECT TO NORMAL MANUFACTURING VARIATIONS. ANY OTHER DIMENSIONS ARE SUBJECT TO NORMAL MANUFACTURING VARIATIONS. ANY OTHER DIMENSIONS ARE SUBJECT TO NORMAL MANUFACTURING VARIATIONS. ANY OTHER DIMENSIONS ARE SUBJECT TO NORMAL MANUFACTURING VARIATIONS. ANY OTHER DIMENSIONS ARE SUBJECT TO NORMAL MANUFACTURING VARIATIONS. ANY OTHER DIMENSIONS ARE SUBJECT TO NORMAL MANUFACTURING VARIATIONS. ANY OTHER DIMENSIONS ARE SUBJECT TO NORMAL MANUFACTURING VARIATIONS. ANY OTHER DIMENSIONS ARE SUBJECT TO NORMAL MANUFACTURING VARIATIONS. ANY OTHER DIMENSIONS ARE SUBJECT TO NORMAL MANUFACTURING VARIATIONS. ANY OTHER DIMENSIONS ARE SUBJECT TO NORMAL MANUFACTURING VARIATIONS. ANY OTHER DIMENSIONS ARE SUBJECT TO NORMAL MANUFACTURING VARIATIONS. ANY OTHER DIMENSIONS ARE SUBJECT TO NORMAL MANUFACTURING VARIATIONS. ANY OTHER DIMENSIONS ARE SUBJECT TO NORMAL MANUFACTURING VARIATIONS. ANY OTHER DIMENSIONS ARE SUBJECT TO NORMAL MANUFACTURING VARIATIONS. ANY OTHER DIMENSIONS ARE SUBJECT TO NORMAL MANUFACTURING VARIATIONS. ANY OTHER DIMENSIONS ARE SUBJECT TO NORMAL MANUFACTURING VARIATIONS. ANY OTHER DIMENSIONS ARE SUBJECT TO NORMAL MANUFACTURING VARIATIONS. ANY OTHER DIMENSIONS ARE SUBJECT TO NORMAL MANUFACTURING VARIATIONS. ANY OTHER DIMENSIONS ARE SUBJECT TO NORMAL MANUFACTURING VARIATIONS. ANY OTHER DIMENSIONS ARE SUBJECT TO NORMAL MANUFACTURING VARIATIONS. ANY OTHER DIMENSIONS ARE SUBJECT TO NORMAL MANUFACTURING VARIATIONS. ANY OTHER DIMENSIONS ARE SUBJECT TO NORMAL MANUFACTURING VARIATIONS. ANY OTHER DIMENSIONS ARE SUBJECT TO NORMAL MANUFACTURING VARIATIONS. ANY OTHER DIMENSIONS ARE SUBJECT TO NORMAL MANUFACTURING VARIATIONS. ANY OTHER DIMENSIONS ARE SUBJECT TO NORMAL MANUFACTURING VARIATIONS. ANY OTHER DIMENSIONS ARE SUBJECT TO NORMAL MANUFACTURING VARIATIONS. ANY OTHER DIMENSIONS ARE SUBJECT TO NORMAL MANUFACTURING VARIATIONS. ANY OTHER DIMENSIONS ARE SUBJECT TO NORMAL MANUFACTURING VARIATIONS. ANY OTHER DIMENSIONS ARE SUBJECT TO NORMAL MANUFACTURING VARIATIONS. ANY OTHER DIMENSIONS ARE SUBJECT TO NORMAL MANUFACTURING VARIATIONS. ANY OTHER DIMENSIONS ARE SUBJECT TO NORMAL MANUFACTURING VARIATIONS. ANY OTHER DIMENSIONS ARE SUBJECT TO NORMAL MANUFACTURING VARIATIONS. ANY OTHER DIMENSIONS ARE SUBJECT TO NORMAL MANUFACTURING VARIATIONS. ANY OTHER DIMENSIONS ARE SUBJECT TO NORMAL MANUFACTURING VARIATIONS. ANY OTHER DIMENSIONS ARE SUBJECT TO NORMAL MANUFACTURING VARIATIONS. ANY OTHER DIMENSIONS ARE SUBJECT TO NORMAL MANUFACTURING VARIATIONS. ANY OTHER DIMENSIONS ARE SUBJECT TO NORMAL MANUFACTURING VARIATIONS. ANY OTHER DIMENSIONS ARE SUBJECT TO NORMAL MANUFACTURING VARIATIONS. ANY OTHER DIMENSIONS ARE SUBJECT TO NORMAL MANUFACTURING VARIATIONS. ANY OTHER DIMENSIONS ARE SUBJECT TO NORMAL MANUFACTURING VARIATIONS. ANY OTHER DIMENSIONS ARE SUBJECT TO NORMAL MANUFACTURING VARIATIONS. ANY OTHER DIMENSIONS ARE SUBJECT TO NORMAL MANUFACTURING VARIATIONS. ANY OTHER DIMENSIONS ARE SUBJECT TO NORMAL MANUFACTURING VARIATIONS. ANY OTHER DIMENSIONS ARE SUBJECT TO NORMAL MANUFACTURING VARIATIONS. ANY OTHER DIMENSIONS ARE SUBJECT TO NORMAL MANUFACTURING VARIATIONS. ANY OTHER DIMENSIONS ARE SUBJECT TO NORMAL MANUFACTURING VARIATIONS. ANY OTHER DIMENSIONS ARE SUBJECT TO NORMAL MANUFACTURING VARIATIONS. ANY OTHER DIMENSIONS ARE SUBJECT TO NORMAL MANUFACTURING VARIATIONS. ANY OTHER DIMENSIONS ARE SUBJECT TO NORMAL MANUFACTURING VARIATIONS. ANY OTHER DIMENSIONS ARE SUBJECT TO NORMAL MANUFACTURING VARIATIONS. ANY OTHER DIMENSIONS ARE SUBJECT TO NORMAL MANUFACTURING VARIATIONS. ANY OTHER DIMENSIONS ARE SUBJECT TO NORMAL MANUFACTURING VARIATIONS. ANY OTHER DIMENSIONS ARE SUBJECT TO NORMAL MANUFACTURING VARIATIONS. ANY OTHER DIMENSIONS ARE SUBJECT TO NORMAL MANUFACTURING VARIATIONS. ANY OTHER DIMENSIONS ARE SUBJECT TO NORMAL MANUFACTURING VARIATIONS. ANY OTHER DIMENSIONS ARE SUBJECT TO NORMAL MANUFACTURING VARIATIONS. ANY OTHER DIMENSIONS ARE SUBJECT TO NORMAL MANUFACTURING VARIATIONS. ANY OTHER DIMENSIONS ARE SUBJECT TO NORMAL MANUFACTURING VARIATIONS. ANY OTHER DIMENSIONS ARE SUBJECT TO NORMAL MANUFACTURING VARIATIONS. ANY OTHER DIMENSIONS ARE SUBJECT TO NORMAL MANUFACTURING VARIATIONS. ANY OTHER DIMENSIONS ARE SUBJECT TO NORMAL MANUFACTURING VARIATIONS. ANY OTHER DIMENSIONS ARE SUBJECT TO NORMAL MANUFACTURING VARIATIONS. ANY OTHER DIMENSIONS ARE SUBJECT TO NORMAL MANUFACTURING VARIATIONS. ANY OTHER DIMENSIONS ARE SUBJECT TO NORMAL MANUFACTURING VARIATIONS. ANY OTHER DIMENSIONS ARE SUBJECT TO NORMAL MANUFACTURING VARIATIONS. ANY OTHER DIMENSIONS ARE SUBJECT TO NORMAL MANUFACTURING VARIATIONS. ANY OTHER DIMENSIONS ARE SUBJECT TO NORMAL MANUFACTURING VARIATIONS. ANY OTHER DIMENSIONS ARE SUBJECT TO NORMAL MANUFACTURING VARIATIONS. ANY OTHER DIMENSIONS ARE SUBJECT TO NORMAL MANUFACTURING VARIATIONS. ANY OTHER DIMENSIONS ARE SUBJECT TO NORMAL MANUFACTURING VARIATIONS. ANY OTHER DIMENSIONS ARE SUBJECT TO NORMAL MANUFACTURING VARIATIONS. ANY OTHER DIMENSIONS ARE SUBJECT TO NORMAL MANUFACTURING VARIATIONS. ANY OTHER DIMENSIONS ARE SUBJECT TO NORMAL MANUFACTURING VARIATIONS. ANY OTHER DIMENSIONS ARE SUBJECT TO NORMAL MANUFACTURING VARIATIONS. ANY OTHER DIMENSIONS ARE SUBJECT TO NORMAL MANUFACTURING VARIATIONS. ANY OTHER DIMENSIONS ARE SUBJECT TO NORMAL MANUFACTURING VARIATIONS. ANY OTHER DIMENSIONS ARE SUBJECT TO NORMAL MANUFACTURING VARIATIONS. ANY OTHER DIMENSIONS ARE SUBJECT TO NORMAL MANUFACTURING VARIATIONS. ANY OTHER DIMENSIONS ARE SUBJECT TO NORMAL MANUFACTURING VARIATIONS. ANY OTHER DIMENSIONS ARE SUBJECT TO NORMAL MANUFACTURING VARIATIONS. ANY OTHER DIMENSIONS ARE SUBJECT TO NORMAL MANUFACTURING VARIATIONS. ANY OTHER DIMENSIONS ARE SUBJECT TO NORMAL MANUFACTURING VARIATIONS. ANY OTHER DIMENSIONS ARE SUBJECT TO NORMAL MANUFACTURING VARIATIONS. ANY OTHER DIMENSIONS ARE SUBJECT TO NORMAL MANUFACTURING VARIATIONS. ANY OTHER DIMENSIONS ARE SUBJECT TO NORMAL MANUFACTURING VARIATIONS. ANY OTHER DIMENSIONS ARE SUBJECT TO NORMAL MANUFACTURING VARIATIONS. ANY OTHER DIMENSIONS ARE SUBJECT TO NORMAL MANUFACTURING VARIATIONS. ANY OTHER DIMENSIONS ARE SUBJECT TO NORMAL MANUFACTURING VARIATIONS. ANY OTHER DIMENSIONS ARE SUBJECT TO NORMAL MANUFACTURING VARIATIONS. ANY OTHER DIMENSIONS ARE SUBJECT TO NORMAL MANUFACTURING VARIATIONS. ANY OTHER DIMENSIONS ARE SUBJECT TO NORMAL MANUFACTURING VARIATIONS. ANY OTHER DIMENSIONS ARE SUBJECT TO NORMAL MANUFACTURING VARIATIONS. ANY OTHER DIMENSIONS ARE SUBJECT TO NORMAL MANUFACTURING VARIATIONS. ANY OTHER DIMENSIONS ARE SUBJECT TO NORMAL MANUFACTURING VARIATIONS. ANY OTHER DIMENSIONS ARE SUBJECT TO NORMAL MANUFACTURING VARIATIONS. ANY OTHER DIMENSIONS ARE SUBJECT TO NORMAL MANUFACTURING VARIATIONS. ANY OTHER DIMENSIONS ARE SUBJECT TO NORMAL MANUFACTURING VARIATIONS. ANY OTHER DIMENSIONS ARE SUBJECT TO NORMAL MANUFACTURING VARIATIONS. ANY OTHER DIMENSIONS ARE SUBJECT TO				

REVISIONS				DATE	BY	APP
REV	ZONE	ECO	DESCRIPTION	6/12/09	B.D.B.	M.F.F.
A1	-	-	RELEASE NUMBER 016571			

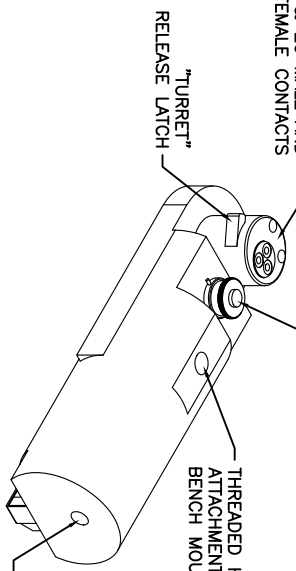
CONTACT LOCATOR "TURRET"
THREE POSITION FOR SIZE
12, 16 & 20 MALE AND
FEMALE CONTACTS



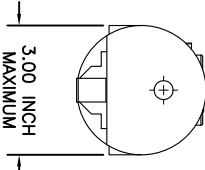
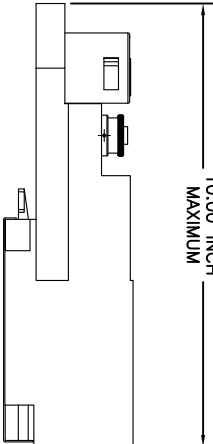
"TURRET"
RELEASE LATCH

SELECTOR FOR
CRIMP SETTING

THREADED HOLE FOR
ATTACHMENT OF
BENCH MOUNT FIXTURE



10.00 INCH
MAXIMUM



3.00 INCH
MAXIMUM

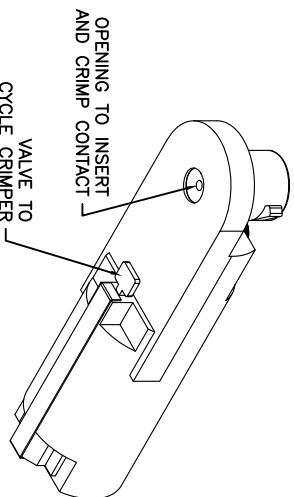
THREADED OPENING
FOR COMPRESSED
AIR FITTING

- NOTES:
1. THE CA-5E12 IS A COMPRESSED AIR OPERATED HAND CRIMPER FOR ELECTRICAL CONTACTS. IT IS ADJUSTABLE TO 3 CONTACT SIZES (12, 16 & 20) AND 8 INDENTER CRIMP POSITIONS FOR DIFFERENT WIRE SIZES (12AWG THRU 26 AWG).

2. 80-120 PSI COMPRESSED AIR.
3. WEIGHT: 3.1 LBS

4. SELECTING CONTACT SIZE: PRESS THE RELEASE LATCH ON SIDE OF THE CONTACT LOCATOR "TURRET". ROTATE TO THE DESIRED CONTACT SIZE. THE TOP OF THE "TURRET" IS EMBOSSED WITH THE CONTACT SIZES.

5. SELECTING WIRE SIZE: GRASP THE SELECTOR AND ROTATE TO THE DESIRED NUMBER.



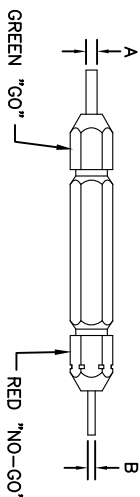
VALVE TO
CYCLE CRIMPER

OPENING TO INSERT
AND CRIMP CONTACT

GAGE PART NO.	A GO DIA.	B NO-GO DIA.	SELECTOR NUMBER
G125	.0390	.0440	4

GAGING INSTRUCTIONS

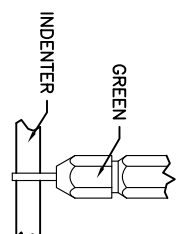
CAUTION!
DO NOT CRIMP GAGE!



GREEN "GO"
RED "NO-GO"

"GO" GAGING: OPERATE TOOL TO FULLY CLOSED POSITION. INSERT "GO" GAGE END AS SHOWN. GAGE MUST PASS FREELY BETWEEN INDENTER TIPS.

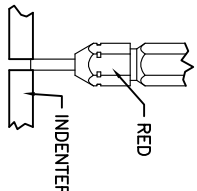
"NO-GO" GAGING: OPERATE TOOL TO FULLY CLOSED POSITION. INSERT "NO-GO" GAGE END AS SHOWN. THE "NO-GO" MAY PARTIALLY ENTER THE INDENTER OPENING, BUT MUST NOT PASS COMPLETELY THROUGH THE OPENING.



GREEN

INDENTER

SELECTOR NUMBER	A GO DIA.	B NO-GO DIA.
1	.0280	.0330
2	.0320	.0370
3	.0360	.0410
4	.0390	.0440
5	.0450	.0500
6	.0520	.0570
7	.0590	.0640
8	.0680	.0730



RED

INDENTER

CONTACT SIZE		SELECTOR NUMBER							
LOCATOR POSITION	26 WIRE	24 WIRE	22 WIRE	20 WIRE	18 WIRE	16 WIRE	14 WIRE	12 WIRE	
20-20	RED	1	2	3	4				
16-22	BLUE	4	5	6					
16-20	BLUE	1	2	3	4				
16-16	BLUE				4	5	6		
12-16	YELLOW				4	5	6		
12-12	YELLOW						7	8	

QUANTITY		PART NUMBER		DESCRIPTION		ITEM
UNLESS OTHERWISE SPECIFIED		SIGNATURES		DATE		
1) All dimensions are in inches.		DRAWN: BERNIM		6/2/09		
2) Tolerance on all dimensions is .010.		CHECKED: FROCK		6/3/09		
3) Tolerance on all dimensions is .010.		ENGINEER: BERNIM		6/3/09		
4) Tolerance on all dimensions is .010.		APPROVAL: BERNIM		6/3/09		
5) Tolerance on all dimensions is .010.		CUSTOMER:				
6) Tolerance on all dimensions is .010.		THE USE OF THIS DOCUMENT IS		SPECIFICATIONS, AND PERFORMANCE		
7) Tolerance on all dimensions is .010.		PROPERTY OF AMPHENOL CORP. ALL		DIMENSIONS ARE SUBJECT TO REVISION		
8) Tolerance on all dimensions is .010.		DOCUMENTS RETAINED HEREON MAY		CONTAIN UNCLASSIFIED INFORMATION		
9) Tolerance on all dimensions is .010.		MATERIAL SPECIFICATIONS:		N/A		
10) Tolerance on all dimensions is .010.		PROCESS SPECIFICATIONS:		N/A		
11) Tolerance on all dimensions is .010.		NEXT ASSY:				

SINE Systems Corporation

A Subsidiary of Amphenol Corporation
44724 Moley Drive
Canton Township, MI 48036

INSTRUCTIONS FOR CA-5E12
CRIMPER, PNEUMATIC

SIZE: 1/2" DIA. WIRE NO. S2-15220

SCALE: NONE C 10K44 S2-15220 A1

REVISIONS			
REV	ZONE	ECO	DESCRIPTION
1	-	-	RELEASE NUMBER 016571
DATE	6/12/09	BY	M.S.F.

CONTACT LOCATOR
"TURRET"
THREE POSITIONS FOR
SIZE 12, 16 & 20 MALE
AND FEMALE CONTACTS

"TURRET" RELEASE LATCH

6.25 INCH
MAXIMUM
OPEN

2.30 INCH
MAXIMUM
CLOSED

SELECTOR FOR CRIMP
SETTING

1.125 INCH MAX.

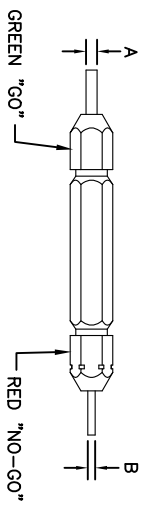
9.75 INCH MAXIMUM

1.00 INCH MAX.

GAGE PART NO.	A GO DIA.	B NO-GO DIA.	SELECTOR NUMBER
G125	.0390	.0440	4

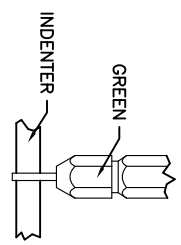
GAGING INSTRUCTIONS

CAUTION!
DO NOT CRIMP GAGE!

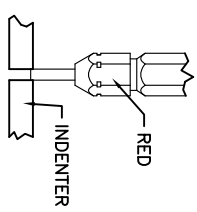


"GO" GAGING: OPERATE TOOL TO FULLY CLOSED POSITION. INSERT "GO" GAGE END AS SHOWN. GAGE MUST PASS FREELY BETWEEN INDENTER TIPS.

"NO-GO" GAGING: OPERATE TOOL TO FULLY CLOSED POSITION. INSERT "NO-GO" GAGE END AS SHOWN. THE "NO-GO" MAY PARTIALLY ENTER THE INDENTER OPENING, BUT MUST NOT PASS COMPLETELY THROUGH THE OPENING.



SELECTOR NUMBER	A GO DIA.	B NO-GO DIA.
1	.0280	.0330
2	.0320	.0370
3	.0360	.0410
4	.0390	.0440
5	.0450	.0500
6	.0520	.0570
7	.0590	.0640
8	.0680	.0730



CONTACT SIZE		SELECTOR NUMBER							
20-20	RED	1	2	3	4				
16-22	BLUE	4	5	6					
16-20	BLUE	1	2	3	4				
16-16	BLUE				4	5	6		
12-16	YELLOW				4	5	6		
12-12	YELLOW					7	8		

- NOTES:
- THE CA-5D12 IS A HAND OPERATED CRIMPER FOR ELECTRICAL CONTACTS. IT IS ADJUSTABLE TO 3 CONTACT SIZES (12, 16 & 20) AND 8 INDENTER CRIMP POSITIONS FOR DIFFERENT WIRE SIZES (12AWG THRU 26 AWG).
 - WEIGHT: 1.64 LBS
 - SELECTING CONTACT SIZE: PRESS THE RELEASE LATCH ON SIDE OF THE CONTACT LOCATOR "TURRET". ROTATE TO THE DESIRED CONTACT SIZE. THE TOP OF THE "TURRET" IS EMBOSSED WITH THE CONTACT SIZES.
 - SELECTING WIRE SIZE: REMOVE THE LOCKING CLIP. GRASP THE SELECTOR AND ROTATE TO THE DESIRED NUMBER.

QUANTITY	PART NUMBER	DESCRIPTION	ITEM
MATERIALS LIST			
SIGNATURES DATE			
DRAWN: BERLIN 6/3/09			
CHECKED: FINCE 6/3/09			
ENGINEER: BERLIN			
APPROVAL: BERLIN 6/3/09			
CUSTOMER:			
PROCESS SPECIFICATIONS:			
N/A			
THE USE OF THIS DRAWING IS SPECIFIC TO THE PART AND SPECIFICATIONS. ANY REUSE OF THIS DRAWING FOR ANY OTHER PART OR SPECIFICATION IS PROHIBITED. ALL DOCUMENTS REFERENCED HEREON ARE COMPANY LIMITED RIGHTS DATA.			
SIZE: TYPICAL DIMENSIONS: NONE			
SCALE: NONE			
CRIMPER, HAND, MACHINED CONTACTS			
S2-15219			
SHEET 1 OF 1			

SINE Systems Corporation
A Subsidiary of Amphenol Corporation
44724 Moley Drive
Canton Township, MI 48036

REVISIONS				
REV	ZONE	ECO	DESCRIPTION	DATE
A1	-	-	RELEASE NUMBER 016371	6/12/09
BY	APP			
B.D.B.	M.R.F.			

SOLID CONTACT SIZE		SOLID CONTACT PART NUMBERS		WIRE SIZE AWG(mm ²)	RECOMMENDED STRIP LENGTH INCH (mm)	MIN CONTACT RETENTION LBS (N)	REF CRIMP TENSILE LBS (N)	MAX RATED AMPS@125°C CONTINUOUS
		PN	SOCKET					
16	AT60-202-16**		AT62-201-16**	16-20 [1.5-0.5]	0.25-0.31 [6.35-7.92]	25 [111]	35-20 [156-89]	13

S&F CONTACT SIZE	STAMPED CONTACT PART NUMBERS		WIRE SIZE AWG (mm ²)	WIRE INSULATION O.D. RANGE	RECOMMENDED STRIP LENGTH INCH (mm)	MIN CONTACT RETENTION LBS (N)	REF CRIMP TENSILE LBS (N)	MAX RATED AMPS@125°C CONTINUOUS
	PN	SOCKET						
16	AT60-14-01**		14-16 [2.0-1.0]	.100 - .150 [2.54 - 3.81]	0.150-0.200 [3.81-5.08]	25 [111]	25 [111]	13
16	AT60-16-01**		16-18 [1.0-0.75]	.075 - .100 [1.90 - 2.54]	0.150-0.200 [3.81-5.08]	25 [111]	25 [111]	13
16	AT60-16-06**		18-20 [0.75-0.50]	.055 - .095 [1.40 - 2.41]	0.150-0.200 [3.81-5.08]	25 [111]	25-15 [111-67]	13



CONTACT RESISTANCE STRENGTH (LESS DROP THROUGH WIRE)			
WIRE AWG	TEST CURRENT	MILLIVOLT DROP SOLID	MILLIVOLT DROP S&F
14	18	60	100
16	13	60	100
18	10	60	100
20	7.5	60	100

MATERIAL SPECIFICATION
AND PLATING ** CODES

PIN: COPPER ALLOY

SOCKET: COPPER ALLOY WITH STAINLESS STEEL SLEEVE

SOLID MACHINED CONTACT PLATING OPTIONS:

31= GOLD*

141= NICKEL

STAMPED CONTACT PLATING OPTIONS:

22= NICKEL

44= GOLD*

88= SELECTIVE GOLD*

GOLD* = PLATING IS AVAILABLE (RECOMMENDED) FOR ONLY (<5V) CIRCUIT APPLICATIONS
MATERIALS AND PLATINGS ARE ROHS COMPLIANT

NOTES: UNLESS OTHERWISE SPECIFIED

- ALL DIMENSIONS ARE INCHES(MM).
- ALL FORCES ARE IN LBS(POUNDS) AND "N" (NEWTONS).
- CONTACT RETENTION TEST PULL RATE SHALL BE 1.0 INCH(25.4) PER MINUTE MAXIMUM. WIRE SIZE WILL AFFECT THE TRUE STRENGTH OF THE CRIMP.
- WIRE SIZES AND INSULATION RANGES ARE FOR REFERENCE ONLY. THE ACTUAL INSULATION RANGE DEPENDS ON CONNECTOR GROMMET SEALING SIZE.

SEE SPECIFICATIONS LISTED BELOW FOR INDIVIDUAL CRIMP INFORMATION:

"SOLID" CONTACTS	SIZE	"STAMPED" CONTACTS	SIZE
S2-15218	16	S2-15222	16
		S2-15221	16/20

MAXIMUM RATED CURRENT IN CHART DEPENDS ON CONTACT SIZE. ACTUAL RATED CURRENT DEPENDS ON WIRE SIZE.

CONTACT FACTORY FOR ALL AVAILABLE PLATING ON SPECIFIC CONTACTS.

AMPHENOL SINE PERFORMANCE SPECIFICATIONS REQUIRE THE USE OF AMPHENOL SINE APPROVED TOOLING.

QUANTITY	PART NUMBER	DESCRIPTION	ITEM
MATERIALS LIST			
UNLESS OTHERWISE SPECIFIED			
1) All dimensions are in inches.			
2) Dimensions are in parentheses.			
3) Plating is standard unless otherwise specified.			
4) Plating is standard unless otherwise specified.			
5) Plating is standard unless otherwise specified.			
6) Plating is standard unless otherwise specified.			
7) Plating is standard unless otherwise specified.			
8) Plating is standard unless otherwise specified.			
9) Plating is standard unless otherwise specified.			
10) Plating is standard unless otherwise specified.			
11) Plating is standard unless otherwise specified.			
12) Plating is standard unless otherwise specified.			
13) Plating is standard unless otherwise specified.			
14) Plating is standard unless otherwise specified.			
15) Plating is standard unless otherwise specified.			
16) Plating is standard unless otherwise specified.			
17) Plating is standard unless otherwise specified.			
18) Plating is standard unless otherwise specified.			
19) Plating is standard unless otherwise specified.			
20) Plating is standard unless otherwise specified.			
21) Plating is standard unless otherwise specified.			
22) Plating is standard unless otherwise specified.			
23) Plating is standard unless otherwise specified.			
24) Plating is standard unless otherwise specified.			
25) Plating is standard unless otherwise specified.			
26) Plating is standard unless otherwise specified.			
27) Plating is standard unless otherwise specified.			
28) Plating is standard unless otherwise specified.			
29) Plating is standard unless otherwise specified.			
30) Plating is standard unless otherwise specified.			
31) Plating is standard unless otherwise specified.			
32) Plating is standard unless otherwise specified.			
33) Plating is standard unless otherwise specified.			
34) Plating is standard unless otherwise specified.			
35) Plating is standard unless otherwise specified.			
36) Plating is standard unless otherwise specified.			
37) Plating is standard unless otherwise specified.			
38) Plating is standard unless otherwise specified.			
39) Plating is standard unless otherwise specified.			
40) Plating is standard unless otherwise specified.			
41) Plating is standard unless otherwise specified.			
42) Plating is standard unless otherwise specified.			
43) Plating is standard unless otherwise specified.			
44) Plating is standard unless otherwise specified.			
45) Plating is standard unless otherwise specified.			
46) Plating is standard unless otherwise specified.			
47) Plating is standard unless otherwise specified.			
48) Plating is standard unless otherwise specified.			
49) Plating is standard unless otherwise specified.			
50) Plating is standard unless otherwise specified.			
51) Plating is standard unless otherwise specified.			
52) Plating is standard unless otherwise specified.			
53) Plating is standard unless otherwise specified.			
54) Plating is standard unless otherwise specified.			
55) Plating is standard unless otherwise specified.			
56) Plating is standard unless otherwise specified.			
57) Plating is standard unless otherwise specified.			
58) Plating is standard unless otherwise specified.			
59) Plating is standard unless otherwise specified.			
60) Plating is standard unless otherwise specified.			
61) Plating is standard unless otherwise specified.			
62) Plating is standard unless otherwise specified.			
63) Plating is standard unless otherwise specified.			
64) Plating is standard unless otherwise specified.			
65) Plating is standard unless otherwise specified.			
66) Plating is standard unless otherwise specified.			
67) Plating is standard unless otherwise specified.			
68) Plating is standard unless otherwise specified.			
69) Plating is standard unless otherwise specified.			
70) Plating is standard unless otherwise specified.			
71) Plating is standard unless otherwise specified.			
72) Plating is standard unless otherwise specified.			
73) Plating is standard unless otherwise specified.			
74) Plating is standard unless otherwise specified.			
75) Plating is standard unless otherwise specified.			
76) Plating is standard unless otherwise specified.			
77) Plating is standard unless otherwise specified.			
78) Plating is standard unless otherwise specified.			
79) Plating is standard unless otherwise specified.			
80) Plating is standard unless otherwise specified.			
81) Plating is standard unless otherwise specified.			
82) Plating is standard unless otherwise specified.			
83) Plating is standard unless otherwise specified.			
84) Plating is standard unless otherwise specified.			
85) Plating is standard unless otherwise specified.			
86) Plating is standard unless otherwise specified.			
87) Plating is standard unless otherwise specified.			
88) Plating is standard unless otherwise specified.			
89) Plating is standard unless otherwise specified.			
90) Plating is standard unless otherwise specified.			
91) Plating is standard unless otherwise specified.			
92) Plating is standard unless otherwise specified.			
93) Plating is standard unless otherwise specified.			
94) Plating is standard unless otherwise specified.			
95) Plating is standard unless otherwise specified.			
96) Plating is standard unless otherwise specified.			
97) Plating is standard unless otherwise specified.			
98) Plating is standard unless otherwise specified.			
99) Plating is standard unless otherwise specified.			
100) Plating is standard unless otherwise specified.			

Mouser Electronics

Authorized Distributor

Click to View Pricing, Inventory, Delivery & Lifecycle Information:

[Amphenol:](#)

[AT60-16-0122](#) [AT62-16-0122](#) [AT60-14-0122](#) [AT62-14-0122](#) [AT60-16-0622](#) [AT62-16-0622](#)