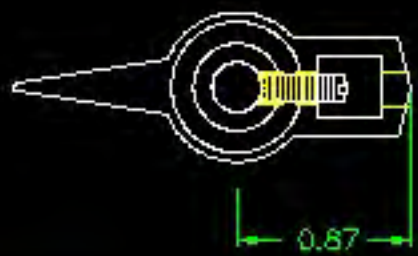
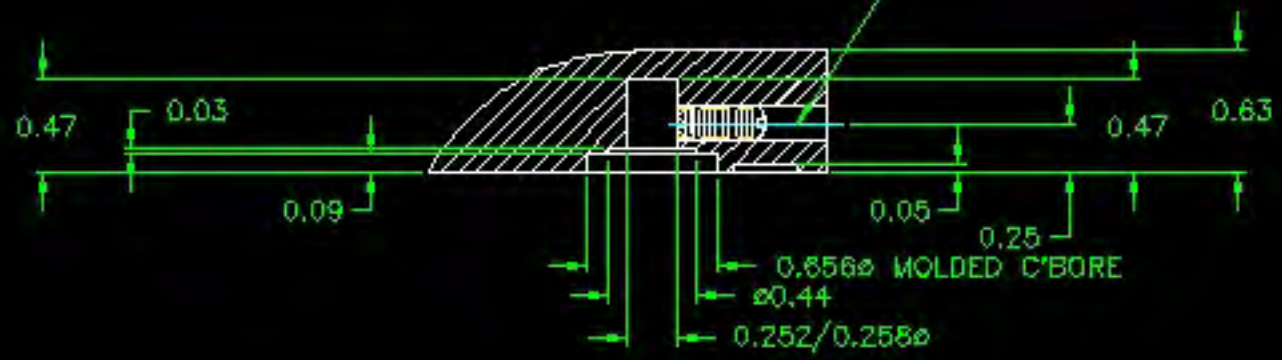


USE # 18 DR. (.169 DIA), X 3/8 DEEP C'SINK.
 USE # 29 DR. (.140 DIA); # 8-32 TAP.
 # 8-32 THD'D. X 7/16 LG. CUP
 POINTED, SLOTTED TYPE, SET SCREW 10022 (1)



MATERIAL : #4311 PLENCO PHENOLIC (B41)
 COLOR : BLACK

TOLERANCES: UNLESS OTHERWISE SPECIFIED	DO NOT SCALE DRAWING			
DECIMALS: X.XXX ± .005 X.XX ± .015	MM: X.XX ± 0.15MM X.X ± 0.4MM	-	UPDATED TOOLBOX	JAM 10/21/02
FRACTIONS ± 1/64	ANG. ± °	CHANGES		

Mouser Electronics

Authorized Distributor

Click to View Pricing, Inventory, Delivery & Lifecycle Information:

[Davies Molding:](#)

[2350AF](#)