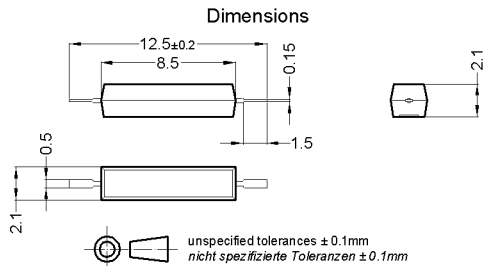


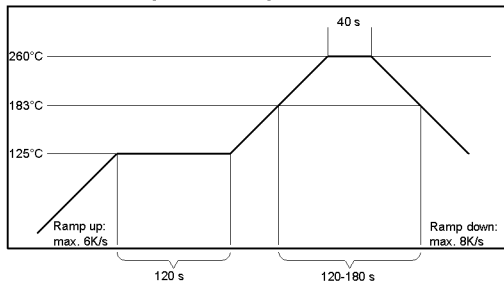
Products for tomorrow...



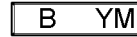
unspecified tolerances ± 0.1mm
 nicht spezifizierte Toleranzen ± 0.1mm

Lötvorschrift / soldering information

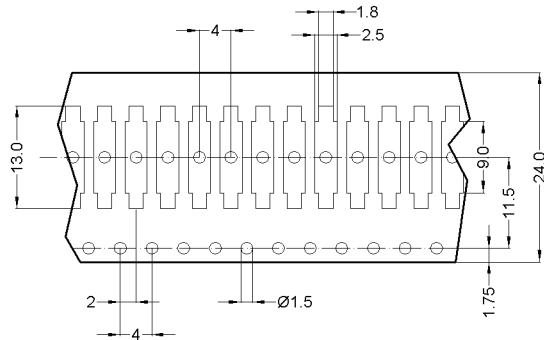
reflow soldering conditions according to JEDEC norm J-STD-020C



Marking
 Sensibility and DateCode
 EN60062



Tape and Reel Packaging (IEC 60286-3)



Magnetic properties	Conditions	Min	Typ	Max	Unit
Pull-In	at 20 °C	32		48	
Test equipment		KMS-11			
Pull-In in milliTesla (modified conta	MS150 - phys. caused tolerance +/- 0.1mT	1,85		2,4	mT
Test equipment		MS-150			

Contact data 80	Conditions	Min	Typ	Max	Unit
Contact-material		Rhodium			
Contact-rating	Any DC combination of V & A not to exceed their individual max.'s			10	W
Switching voltage	DC or Peak AC			100	V
Carry current	DC or Peak AC			0,5	A
Switching current	DC or Peak AC			0,5	A
Contact resistance static	Measured with 40% overdrive Start Value			250	mOhm
Breakdown voltage	according to IEC 255-5	150			VDC

Special Product Data	Conditions	Min	Typ	Max	Unit
Housing material		epoxy resin			
Material		EN 60335-1 conform			

Environmental data	Conditions	Min	Typ	Max	Unit
Shock	1/2 sine wave duration 11ms			30	g
Vibration	from 10 - 2000 Hz			20	g
Operating temperature		-40		130	°C
Storage temperature		-50		130	°C
Soldering temperature	wave soldering max. 5 sec.	wave soldering max. 5sec.			
Washability		fully sealed			

Mouser Electronics

Authorized Distributor

Click to View Pricing, Inventory, Delivery & Lifecycle Information:

[Standex Electronics:](#)

[MK17-B-1](#)