

Distributed by:

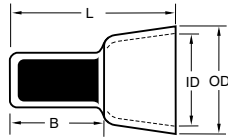
JAMECO[®]
ELECTRONICS

www.Jameco.com ♦ 1-800-831-4242

The content and copyrights of the attached
material are the property of its owner.

Jameco Part Number 454619

Molex Nylon Closed-End Connectors feature 2-piece construction. A translucent nylon-molded insulation is adhered to the metal connector insert. The connector's insert is annealed, Tin-plated, seamless, pure electrolytic, tough pitch Copper. Individual design and performance requirements dictate the use of Copper inserts. These connectors are all rated for a maximum of 600V.

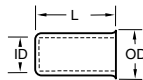


MATERIAL: COPPER

| Nylon-Insulated, Closed-End Connectors | | | | | | | |
|--|--------------------------|-------------------------|------------------------|---------------------|--------------------|-----------------------|----------------------|
| Wire Range AWG (mm ²) | Loose Piece Order No. | Mylar Tape Order No. | Outside Diameter OD | Overall Length L | Barrel Length B | Inside Diameter ID | Circular Mil Area |
| 14-22 (2.00-0.35) | 19160-0012 | 19160-0070 | 7.80 (.310) | 19.81 (.780) | 10.92 (.430) | 6.60 (.260) | 600-5180 |
| 12-22 (3.30-0.35) | 19160-0009 | 19160-0071 | 8.90 (.350) | 21.84 (.860) | 9.40 (.370) | 7.10 (.280) | 600-8230 |
| 10-16 (5.00-1.30) | 19160-0002 | 19160-0083 | 11.20 (.440) | 22.86 (.900) | 11.68 (.460) | 9.60 (.380) | 2200-13,100 |
| 8 (8.50) | 19160-0024 | 19160-0028 | 14.20 (.560) | 27.70 (1.090) | 10.90 (.430) | 12.70 (.500) | 13,100-20,800 |

CONNECTOR INSERTS

Molex Connector Inserts are the same annealed, Tin-plated, seamless pieces used in the nylon-insulated, closed-end connectors above. These inserts are used in applications where insulation is not essential.

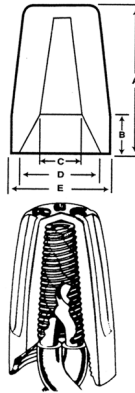


MATERIAL: COPPER

| Connector Inserts | | | | | |
|--------------------------------------|------------|------------------------|---------------------|-----------------------|----------------------|
| Wire Range AWG (mm ²) | Order No. | Outside Diameter OD | Overall Length L | Inside Diameter ID | Circular Mil Area |
| 14-22 (2.00-0.35) | 19160-0025 | 3.61 (.142) | 7.92 (.314) | 2.29 (.090) | 600-5180 |
| 12-22 (3.30-0.35) | 19160-0022 | 4.22 (.166) | 8.05 (.317) | 2.64 (.104) | 600-8230 |
| 10-16 (5.00-1.30) | 19160-0014 | 5.56 (.219) | 7.47 (.294) | 3.84 (.151) | 2200-13,100 |
| 8 (8.50) | 19160-0029 | 7.67 (.302) | 11.05 (.435) | 5.59 (.220) | 13,100-20,800 |

TWIST LOCK WIRE CONNECTORS

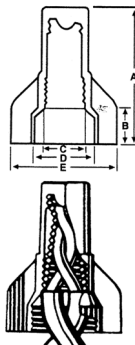
A cone shaped, plated Steel spring conforms to the inside contour of the insulating shell, which supports the spring as the conductor is driven up into the cone. Requiring no pretwisting, the wires are automatically twisted together for a secure connection and maximum contact. Fixed spring wire connectors may be used to make branch circuit or fixture wire connections on numerous combinations of solid and/or stranded wire.



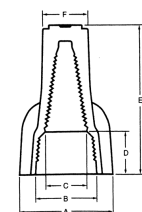
| Twist Lock Wire Connectors | | | | | | | | |
|----------------------------|-------------------|----------------|----------------|-----------|-------|-------|-------|-------|
| Order No. | Copper Wire Only | | | Dimension | | | | |
| | Wire Range AWG | Minimum | Maximum | A | B | C | D | E |
| 19160-0039 | 16-22 (1.30-0.35) | 1 #22 w 1 #20 | 2 #16 | 37/64 | 11/64 | 1/8 | 1/4 | 21/64 |
| 19160-0040 | 16-22 (1.30-0.35) | 3 #22 | 3 #16 | 45/64 | 11/64 | 3/16 | 5/16 | 25/64 |
| 19160-0041 | 14-22 (2.00-0.35) | 3 #20 | 4 #16 w/ 1 #20 | 27/32 | 21/64 | 13/64 | 11/32 | 7/16 |
| 19160-0042 | 10-18 (5.00-0.80) | 1 #14 w/ 1 #18 | 4 #14 | 15/16 | 17/64 | 15/64 | 7/16 | 35/64 |
| 19160-0043 | 10-18 (5.00-0.80) | 2 #14 | 2 #10 w/ 2 #12 | 1-1/16 | 17/64 | 21/64 | 17/32 | 21/32 |

WING LOCK WIRE CONNECTORS

A square wire, coiled spring expands freely within the tough plastic shell and can accommodate a wide range of wire combinations. The angled edges of the spring attach to the conductor as the connector is twisted on for an easily secured joint. The spring applies even pressure over the entire contact area and provides a low resistance connection and mechanical strength against pull and vibration.



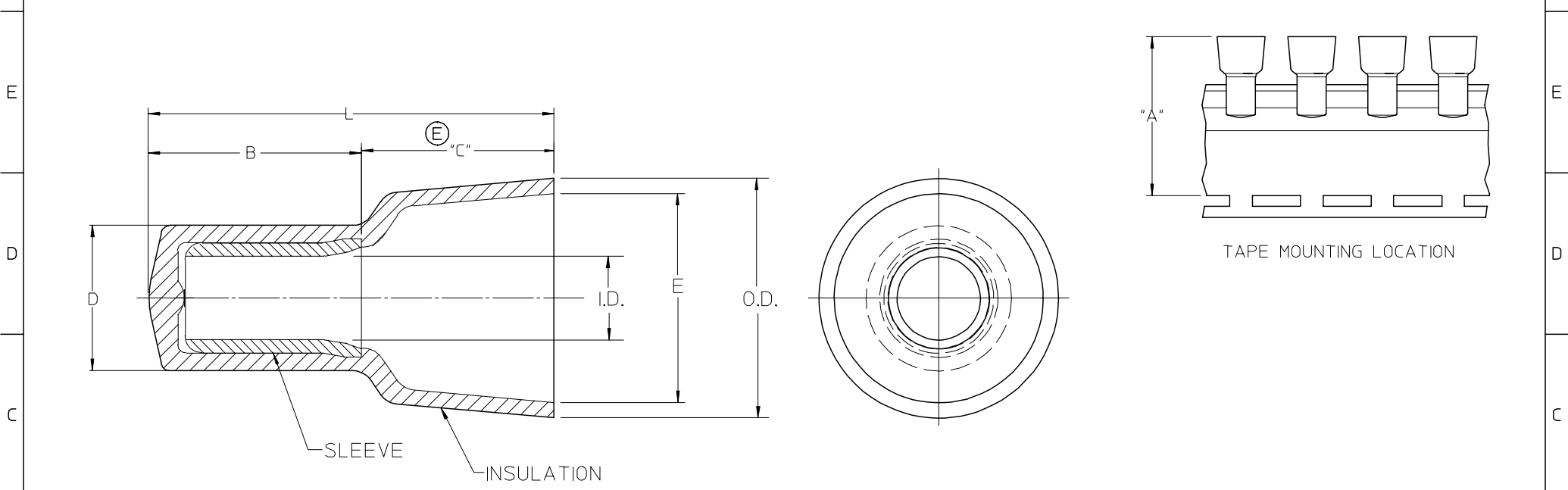
| Wing Lock Wire Connectors | | | | | | | | |
|---------------------------|-------------------|----------------|-----------------|-----------|------|------|-------|--------|
| Order No. | Copper Wire Only | | | Dimension | | | | |
| | Wire Range AWG | Min. | Max. | A | B | C | D | E |
| 19160-0044 | 10-22 (5.00-0.35) | 2 #18 | 3 #12 | 1-1/32 | 5/16 | 7/32 | 1/4 | 23/32 |
| 19160-0045 | 10-18 (5.00-0.80) | 2 #14 | 5 #12 | 1-1/4 | 5/16 | 9/32 | 7/16 | 29/32 |
| 19160-0046 | 6-22 (13.50-0.35) | 3 #22 | 4 #12 w/ 2 #18 | 47/64 | 9/16 | 5/16 | 21/64 | 1-5/32 |
| 19160-0047 | 6-14 (13.50-2.00) | 1 #10 w/ 1 #12 | 1 #6 w/ 2 #8STR | 1-1/2 | 7/16 | 3/8 | 3/4 | 1-1/4 |



Order #19160-0046 only.

Molex connectors must withstand extreme dielectric voltage tests to determine performance. All connectors are UL listed and CSA certified as Pressure-Type wire connectors for 600V max., building wire; 1000V max., signs or fixtures and comply with Federal Specification W-S-610d. Temperature rating 105°C (221°F) max.

| | | | | | | | | | | | | | | | | | | | | | |
|---|--------------|----------|--------------|----------|----------------------------|-----------------------|-----------|-------------------|----------|----------|-----------|-----------|-----------------------|--------------|---|--|---|--|-------|--|--|
| | 10 | | 9 | | 8 | | 7 | | 6 | | 5 | | 4 | | 3 | | 2 | | 19160 | | |
| F | LOOSE PIECE | | TAPE MOUNTED | | STANDARD BAG 100 PCS | ENGINEERING NUMBER | "L" MAX. | "B" ±.010/0.25 | "D" MAX. | "E" MIN. | I.D. MIN. | O.D. MAX. | "A" DIM ±.015/0.38 | ⓔ "C" REF | | | | | | | |
| | MATERIAL NO. | ENG. NO. | MATERIAL NO. | ENG. NO. | | | | | | | | | | | | | | | | | |
| | 191600012 | NC-2214 | 191600070 | NC-2214T | 191600171 | NC-2214STD100 | .61/15.5 | .43/10.9 | .19/4.8 | .24/6.1 | .09/2.3 | .32/8.1 | 1.543/39.19 | .180/4.57 | | | | | | | |
| | 191600009 | NC-2212 | 191600071 | NC-2212T | 191600170 | NC-2212STD100 | .86/21.8 | .37/9.4 | .23/5.8 | .27/6.9 | .10/2.5 | .36/9.1 | 1.631/41.43 | .490/12.45 | | | | | | | |
| | 191600002 | NC-1610 | 191600083 | NC-1610T | 191600169 | NC-1610STD100 | .90/22.8 | .39/9.9 | .28/7.1 | .38/9.6 | .14/3.6 | .45/11.4 | 1.750/44.45 | .510/12.95 | | | | | | | |
| | 191600024 | NC-8 | 191600028 | NC-8T | N/A | N/A | 1.09/27.7 | .43/10.9 | .36/9.1 | .48/12.2 | .21/5.3 | .57/14.5 | 1.864/47.35 | .660/16.76 | | | | | | | |



SALES DRAWING

NOTES:
 1. MATERIAL: SLEEVE: TIN PLATED COPPER
 INSULATION: 6/6 NYLON
 COLOR: NATURAL, TRANSLUCENT

| | | | | | | | | | | | |
|--|-------------|---|---------------------------------------|----------|---|----------------------|---------------------------|---|-----------|---|--|
| ADDED DIM "C" EC NO: ETC2005-0109 DRWN: BENDER2005/01/06 CHKD: R DEROSS2005/01/06 APPR: RDEROSS 2005/01/07 | DESCRIPTION | QUALITY SYMBOLS ▽ = 0 ◻ = 0 | GENERAL TOLERANCES (UNLESS SPECIFIED) | | SCALE 5:1 | DESIGN UNITS INCH | THIRD ANGLE PROJECTION | REVISE ON CAD ONLY | A | | |
| | | | mm | INCH | DIMENSION STYLE IN/MM | | TITLE | | | | |
| | | | 4 PLACES | ± --- | ± --- | DRAWN BY | DATE | CLOSED END CONNECTORS NYLON INSULATED MOLEX INCORPORATED | | | |
| | | | 3 PLACES | ± --- | ± --- | H.BEITZE | 04/02/23 | | | | |
| | | | 2 PLACES | ± --- | ± --- | CHECKED BY | DATE | | | | |
| 1 PLACE | ± --- | ± --- | R.DEROSS | 04/02/23 | MOLEX | | | | | | |
| | | | ANGULAR ±1/2° | | APPROVED BY | DATE | MATERIAL NO. | DOCUMENT NO. | SHEET NO. | | |
| | | | DRAFT WHERE APPLICABLE | | R.DEROSS | 04/02/23 | SEE CHART | SD-19160-001 | 1 OF 1 | | |
| | | | MUST REMAIN WITHIN DIMENSIONS | | THIS DRAWING CONTAINS INFORMATION THAT IS PROPRIETARY TO MOLEX INCORPORATED AND SHOULD NOT BE USED WITHOUT WRITTEN PERMISSION | | | | | | |
| REV | | | | | | | | | | B | |