



TRIM TRIO[®] screw termination contacts



Description

UTS, part of the well-known TRIM TRIO[®] interconnection system

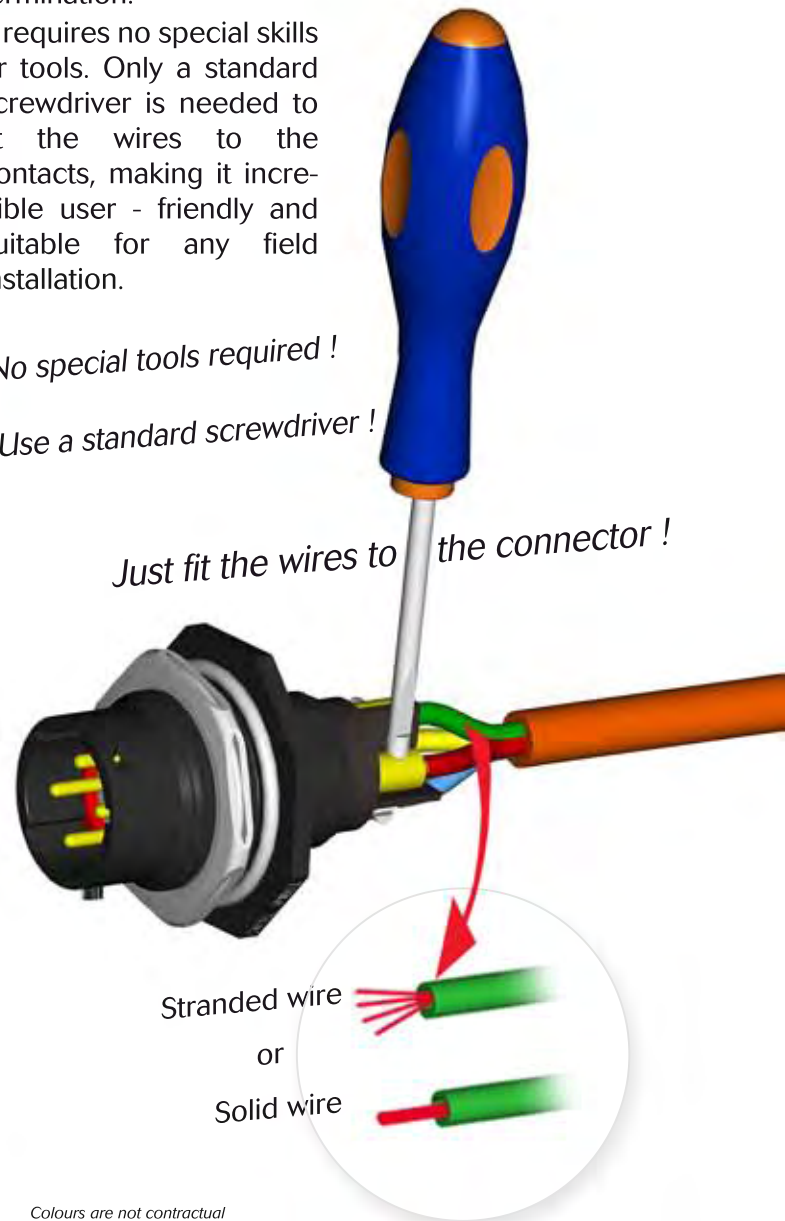
UTS series with screw termination contacts combines extreme sealing performance, rapid & secure connector mating with the ease of wire termination.

It requires no special skills or tools. Only a standard screwdriver is needed to fit the wires to the contacts, making it incredible user - friendly and suitable for any field installation.

No special tools required !

Use a standard screwdriver !

Just fit the wires to the connector !



Features

- Only a standard screwdriver is needed to fit the wires to the contacts
- Contact accepting a wide range of wires
- Rapid mating with 1/3 turn with an audible & sensitive "click"
- Dynamic IP68/69K water protection
- Rapid & secure mating - min 250 mating cycles
- High salt spray resistance
- Male connectors have a grounding contact
- RoHS compliant

Applications

- Tunnel fans
- Videosurveillance
- Traffic control
- Parking detection systems
- Meteorological measurement systems and there is more

UTS with screw contact termination is perfect for field installations.

UTS : your first choice in waterproof connectors !



TRIM TRIO[®] screw termination contacts

Technical characteristics

Mechanical

- Durability 250 cycles
- Thermal shock Per MIL-std 1344 method 1003
- Screw tightening torque 40 Ncm

Electrical

- Current rating 13 Amp
- Insulation resistance 5000 MΩ min
- Test potential 2000 Vac
- Wire acceptance 0.5mm² to 2.5mm²
- Rated voltage 320 V class III, PD 2 per **VDE0110** (IEC 60664-1)
- Rated voltage per UL1977 type 2 500 V

Environmental

- Operating temperature from -40°C to +105°C
- Flammability rating UL94V0 and NFF16102 level 2
- Sealing (mated) Dynamic IP68/69K
- UV resistant Sun and moisture as per ISO 4892
- Salt spray resistance 500 hours

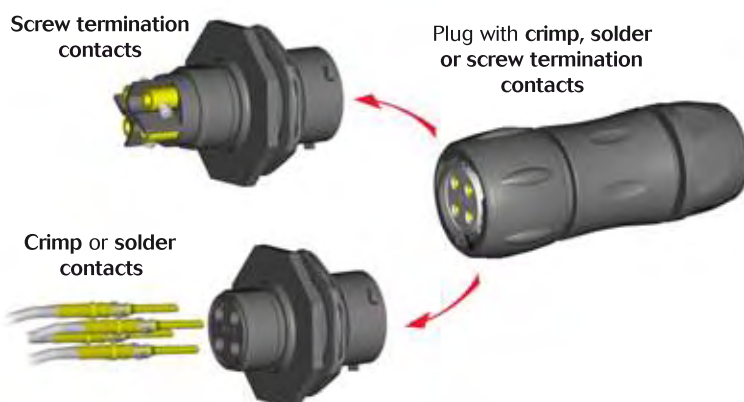
Material

- Connectors + backshells Thermoplastic
- Contacts High conductive copper alloy
Min 0.4µm gold plating
- RoHS compliant

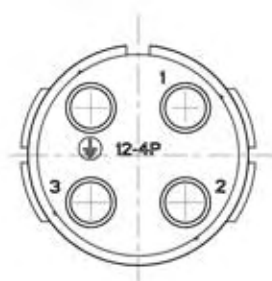


Connector accommodation

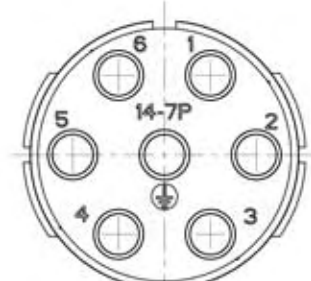
UTS connectors with screw termination contacts are fully intermateable and interchangeable with the UTS crimp and solder versions. (refer to UTS catalog or www.souriau.com).



Available arrangements



Size 12-4
3 + Grounding



Size 14-7
6 + Grounding



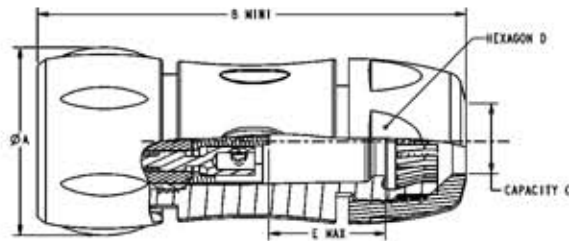
TRIM TRIO[®] screw termination contacts

Range presentation

Plug

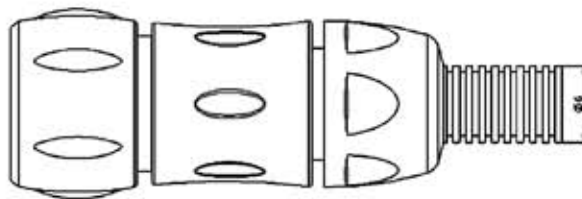


UTS6JC124PSCR (male)
 UTS6JC124SSCR (female)
 UTS6JC147PSCR (male)
 UTS6JC147SSCR (female)



Shell size	12	14
Layout	4 (3+1)	7 (6+1)
ØA	29.7	34.6
B min.	66.7	71.5
Capacity C / Standard	5.0/12.0	7.0/14.0
Capacity C / Reducing seal	3.0/9.0	5.0/12.0
Hexagon D	24.0	26.0
E max. (female)*	21.0 max	18.0 max

* Shell size 12 & 14
 Note : all dimensions are in mm



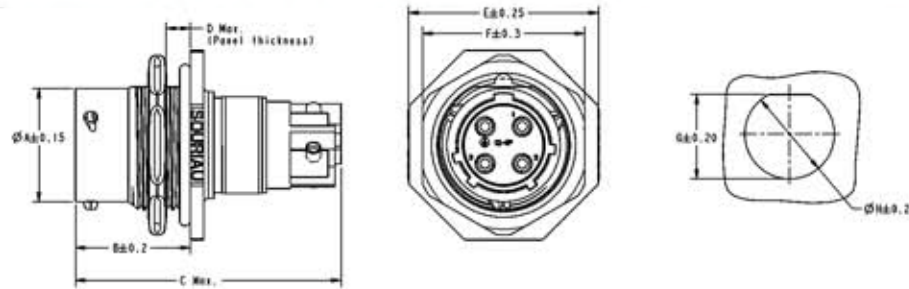
The standard plug and In-line receptacle can be fitted with a flexible conduit - not delivered by SOURIAU.

For all other requests, please consult the factory.

Jam nut receptacle



UTS7124PSCR (male)
 UTS7124SSCR (female)
 UTS7147PSCR (male)
 UTS7147SSCR (female)



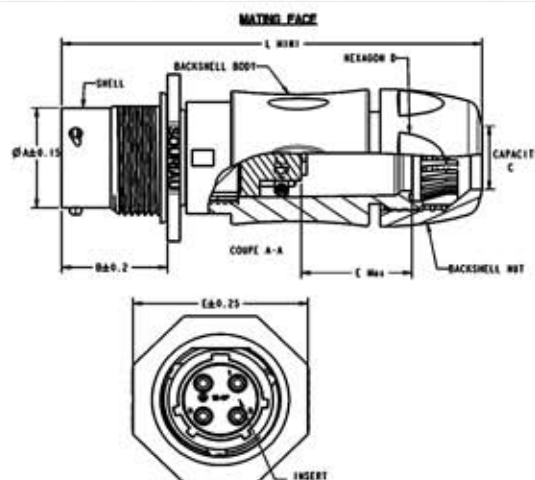
Shell size	Layout	A	B	C max	D max	E	F	G	H
12	4 (3+1)	19.0	19.3	46.5	3.2	31.8	27.0	21.2	22.5
14	7 (6+1)	22.2	19.3	52.5	3.2	34.9	30.2	24.3	25.7

Note : all dimensions are in mm

In-Line receptacle



UTS1JC124PSCR (male)
 UTS1JC147PSCR (male)



Shell size	12	14
Layout	4 (3+1)	7 (6+1)
ØA	19.0	22.2
B	19.3	19.3
L mini	76.0	81.0
E	31.8	34.9
Capacity C / Standard	5.0/12.0	7.0/14.0
Capacity C / Reducing seal	3.0/9.0	5.0/12.0
Hexagon D	24.0	26.0
E max. (male)*	22.0 max	22.0 max

* Shell size 12 & 14
 Note : all dimensions are in mm



TRIM TRIO[®] screw termination contacts

Ordering information

Connector family	Receptacle	UTS	7	-	12	4	P	SCR
	Plug	UTS	6	JC	12	4	S	SCR
	In line	UTS	1	JC	12	4	P	SCR
Body variation	7 : Jam nut receptacle 6 : Cable plug 1 : In line receptacle							
Backshell	JC : IP68/69K backshell (only plug + free hanging)							
Shell size	12 or 14							
Number of contacts	4 or 7							
Type of contacts	P : male S : female							
Contact termination	SCR : Screw termination							

Accessories

<p>Receptacle sealing cap</p>  <p>Part numbers : Size 12 : UTS12DCG Size 14 : UTS14DCG</p>	<p>Plug sealing cap</p>  <p>Part numbers : Size 12 : UTS612DCG Size 14 : UTS614DCG</p>	<p>Colour coding rings</p>  <p>Part numbers for receptacle: Size 12 : UTS712CCR* Size 14 : UTS714CCR* * Add G for Green, Y for Yellow, Ro for Red</p> <p>Part numbers for plug: Size 12 : UTS612CCR* Size 14 : UTS614CCR* * Add G for Green, Y for Yellow, Ro for Red</p>
---	---	--

UTS : your first choice in waterproof connectors !



For further information, visit our web site www.trimtrio.com,
or contact us at contactindustry@souriau.com

Mouser Electronics

Authorized Distributor

Click to View Pricing, Inventory, Delivery & Lifecycle Information:

Souriau:

[UTS710D6P](#) [UTS712D10P](#) [UTS714D19P](#) [UTS718RJFN](#) [UTS6JC8E3S](#) [UTS6JC10E6P](#) [UTS6JC10E6S](#)
[UTS6JC10E7P](#) [UTS6JC10E7S](#) [UTS6JC12E10P](#) [UTS6JC12E10S](#) [UTS6JC14E12P](#) [UTS6JC14E12S](#)
[UTS6JC14E19P](#) [UTS6JC14E19S](#) [UTS6JC8E2P](#) [UTS6JC8E2S](#) [UTS6JC8E33P](#) [UTS6JC8E33S](#) [UTS6JC8E4P](#)
[UTS6JC8E4S](#) [UTS710E6P](#) [UTS710E6S](#) [UTS710E7P](#) [UTS710E7S](#) [UTS712E10P](#) [UTS712E10S](#) [UTS714E12P](#)
[UTS714E12S](#) [UTS714E19P](#) [UTS714E19S](#) [UTS78E2P](#) [UTS78E2S](#) [UTS78E33P](#) [UTS78E33S](#) [UTS78E3P](#)
[UTS78E3S](#) [UTS78E4P](#) [UTS78E4S](#) [UTS6JC18RJN25](#) [UTS6JC14E18P](#) [UTS6JC14E5P](#) [UTS714E5S](#)
[UTS7128PSEK9](#) [UTS6JC14E7P](#) [UTS6JC14E7S](#) [UTS714D7P](#) [UTS714D7S](#) [UTS714E7P](#) [UTS714E7S](#)
[UTS6JC12E14S](#) [UTS6JC12E8P](#) [UTS6JC14E15P](#) [UTS6JC14E15S](#) [UTS6JC14E18S](#) [UTS712E14P](#) [UTS712E14S](#)
[UTS712E8S](#) [UTS714E15P](#) [UTS714E15S](#) [UTS714E18P](#) [UTS714E18S](#) [UTS714E5P](#) [UTS6JC12E14P](#)
[UTS6JC14E5S](#) [UTS7102W2S](#) [UTS712D10P32](#) [UTS714D19S32](#) [UTS710D6P32](#) [UTS7GJC104P](#) [UTS78D4P32](#)
[UTS712D10S32](#) [UTS7102W2P](#) [UTS7JC1823P](#) [UTS714D19P32](#) [UTS7103W3P](#) [UTS78D4S32](#) [UTS7103W3S](#)