

# MAX solutions

## New Mill-Max SMT Spring-Loaded Connector Products



Mill-Max is pleased to announce the development of several new SMT Spring-Loaded Connectors (SLCs). All are offered as discrete contacts and many are available in tape and reel packaging.

New Mill-Max part family 0910-0 and 0910-1 through -4 are discrete SLCs specifically designed for production tape and reel assembly.

Part 0967 is a horizontal mount SMT SLC designed for low-profile board to board interconnections.

New Mill-Max part family 0990-0 and 0990-1 through -4 and 0997-0 through -9 are discrete SLCs featuring a large base utilized for either increased PCB stability or assembly in non-PCB applications such as a face plate. These part families offer a range of application heights from .137" to .430" (3,48mm to 10,92mm.)

For further information visit: [mill-max.com/PR603](http://mill-max.com/PR603).

(12/09 -- 561, 603)

Mill-Max Mfg. Corp. • 190 Pine Hollow Road, Oyster Bay, NY 11771-0300  
516-922-6000 • Fax: 516-922-9253 • [www.mill-max.com](http://www.mill-max.com)

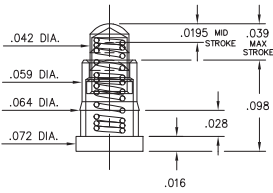




## SPRING-LOADED CONNECTORS Discrete Spring-Loaded Contacts

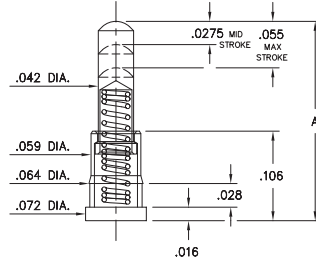


### 0900-0



**0900-0-00-00-00-00-11-0**  
Short Stroke, Surface mount  
Lowest profile

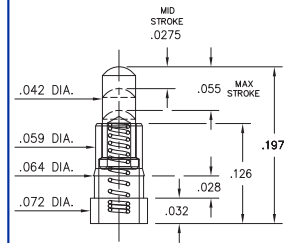
### 0900-1→4



**0900-X-00-00-00-00-11-0**  
Standard Stroke, Surface mount  
Low profile

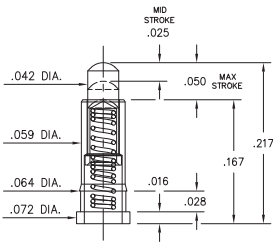
Basic Part Number	Length A
0900-1	.177
0900-2	.197
0900-3	.217
0900-4	.236

### 0934



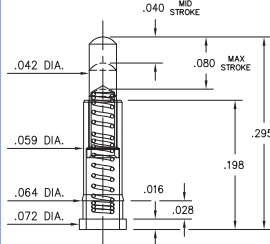
**0934-0-15-20-74-14-26-0**  
Standard Stroke  
Surface mount

### 0936



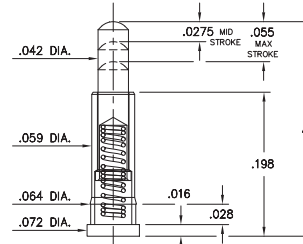
**0936-0-15-20-75-14-11-0**  
Standard Stroke  
Surface mount

### 0928



**0928-0-15-20-77-14-11-0**  
Long Stroke  
Surface mount

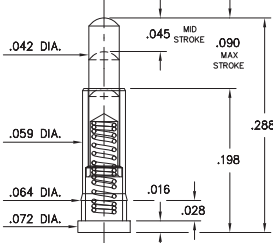
### 0907-0→9



**0907-X-15-20-75-14-11-0**  
Standard Stroke, Surface mount  
High profile

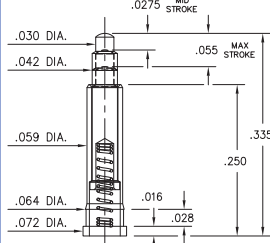
Basic Part Number	Length A
0907-0	.255
0907-1	.275
0907-2	.295
0907-3	.315
0907-4	.335
0907-5	.350
0907-6	.370
0907-7	.390
0907-8	.410
0907-9	.430

### 0913



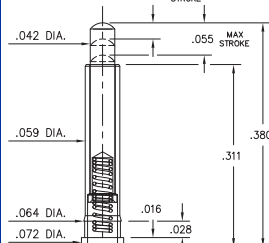
**0913-0-15-20-77-14-11-0**  
Long Stroke  
Surface mount

### 0925



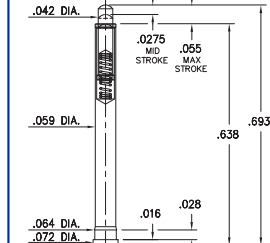
**0925-0-15-20-73-14-26-0**  
Standard Stroke  
Surface mount

### 0927



**0927-0-15-20-75-14-11-0**  
Standard Stroke  
Surface mount

### 0905



**0905-0-00-00-00-00-11-0**  
Standard Stroke, Surface mount  
Highest Profile

**ORDER CODE: 09XX - X - 15 - 20 - 7X - 14 - XX - 0**

Spring Number ↗

#### MATERIAL SPECIFICATIONS:

SLEEVE & PLUNGER MATERIAL: Copper Alloy  
 SPRING MATERIAL: Beryllium Copper  
 SLEEVE & PLUNGER FINISH: 20 μm Gold over Nickel  
 SPRING FINISH: 10 μm Gold over Nickel  
 DIMENSION IN INCHES:  
 TOLERANCES ON: LENGTHS: ±.006  
 DIAMETERS: ±.002  
 ANGLES: ± 2°



#### MECHANICAL & ELECTRICAL SPECIFICATIONS:

DURABILITY: 1,000,000 cycles  
 CURRENT RATING: 2A continuous, 3A peak  
 CONTACT RESISTANCE: 20 mΩ max.

SPRING NUMBER	Mid. STROKE	Max. STROKE	FORCE @ Mid. Stroke	Initial Force (Pre-load)
73	.0275	.055	60	25
74	.0275	.055	50	15
75	.0275	.055	60	25
77	.045	.090	60	25

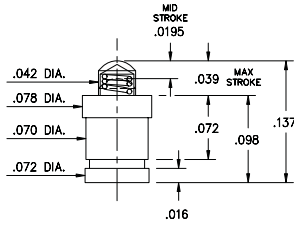
73, 74, 75, 77 Springs are not interchangeable



**SPRING-LOADED CONNECTORS**  
Discrete Spring-Loaded Contacts

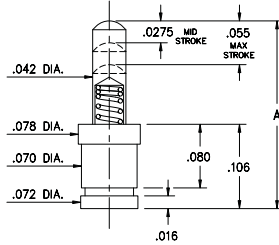


**0910-0**



**0910-0-57-20-76-14-11-0**  
Short Stroke, Surface mount  
Packaged on 16mm wide carrier  
tape: 1,500 parts per 13" reel.

**0910-1⇒4**



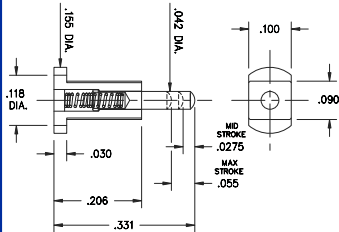
**0910-X-57-20-75-14-11-0**  
Standard Stroke, Surface mount  
Packaged on carrier tape.  
See chart for tape width and qty. per reel



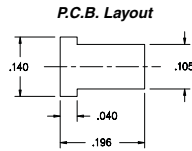
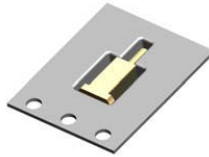
Basic Part Number	Length A
0910-1	.177
0910-2	.197
0910-3	.217
0910-4	.236

Basic Part Number	Tape Width	Quantity per Reel
0910-1	16mm	1,500
0910-2	24mm	1,100
0910-3	24mm	1,100
0910-4	24mm	1,100

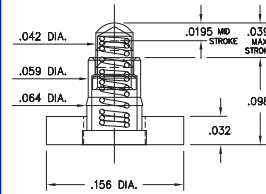
**0967**



**0967-0-15-20-75-14-11-0**  
Standard Stroke, Horizontal Surface mount  
Also available on 16mm wide carrier  
tape: 2,200 parts per 13" reel.  
Order as: 0967-0-58-20-75-14-11-0

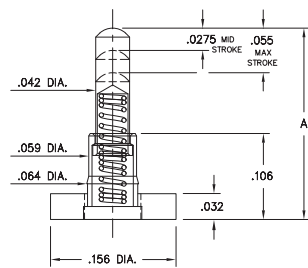


**0990-0**



**0990-0-50-20-76-14-11-0**  
Short Stroke, Surface mount  
Large Base

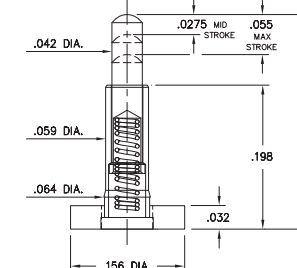
**0990-1⇒4**



Basic Part Number	Length A
0990-1	.177
0990-2	.197
0990-3	.217
0990-4	.236

**0990-X-50-20-75-14-11-0**  
Standard Stroke, Surface mount  
Large Base

**0997-0⇒9**



Basic Part Number	Length A
0997-0	.255
0997-1	.275
0997-2	.295
0997-3	.315
0997-4	.335
0997-5	.350
0997-6	.370
0997-7	.390
0997-8	.410
0997-9	.430

**0997-X-50-20-75-14-11-0**  
Standard Stroke, Surface mount  
Large Base

**ORDER CODE: 09XX - X - XX - 20 - 7X - 14 - 11 - 0**

Spring Number ↗

**MATERIAL SPECIFICATIONS:**

SLEEVE & PLUNGER MATERIAL: Copper Alloy  
SPRING MATERIAL: Beryllium Copper  
SLEEVE & PLUNGER FINISH: 20 μm Gold over Nickel  
SPRING FINISH: 10 μm Gold over Nickel  
DIMENSION IN INCHES:  
TOLERANCES ON: LENGTHS: ±.006  
DIAMETERS: ±.002  
ANGLES: ± 2°



**MECHANICAL & ELECTRICAL SPECIFICATIONS:**

DURABILITY: 1,000,000 cycles  
CURRENT RATING: 2A continuous, 3A peak  
CONTACT RESISTANCE: 20 mΩ max.

SPRING NUMBER	Mid. STROKE	Max. STROKE	FORCE @ Mid. Stroke	Initial Force (Pre-load)
75	.0275	.055	60	25
76	.0195	.039	60	25

75 & 76 Springs are not interchangeable

# Mouser Electronics

Authorized Distributor

Click to View Pricing, Inventory, Delivery & Lifecycle Information:

## Mill-Max:

[0910-0-57-20-76-14-11-0](#) [0910-1-57-20-75-14-11-0](#) [0910-2-57-20-75-14-11-0](#) [0910-3-57-20-75-14-11-0](#) [0910-4-57-20-75-14-11-0](#) [0967-0-15-20-75-14-11-0](#) [0990-0-50-20-76-14-11-0](#) [0990-1-50-20-75-14-11-0](#) [0990-2-50-20-75-14-11-0](#) [0990-3-50-20-75-14-11-0](#) [0990-4-50-20-75-14-11-0](#) [0997-0-50-20-75-14-11-0](#) [0997-1-50-20-75-14-11-0](#) [0997-2-50-20-75-14-11-0](#) [0997-3-50-20-75-14-11-0](#) [0997-4-50-20-75-14-11-0](#) [0997-5-50-20-75-14-11-0](#) [0997-6-50-20-75-14-11-0](#) [0997-7-50-20-75-14-11-0](#) [0997-8-50-20-75-14-11-0](#) [0997-9-50-20-75-14-11-0](#)