



ALL RIGHTS RESERVED. NO PORTION OF THIS PUBLICATION, WHETHER IN WHOLE OR IN PART CAN BE REPRODUCED WITHOUT THE EXPRESS WRITTEN CONSENT OF SPC TECHNOLOGY.

SPC-F005.DWG

REVISIONS

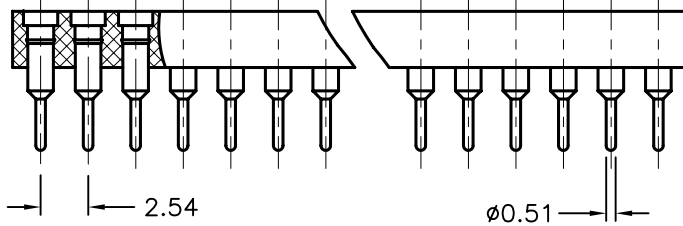
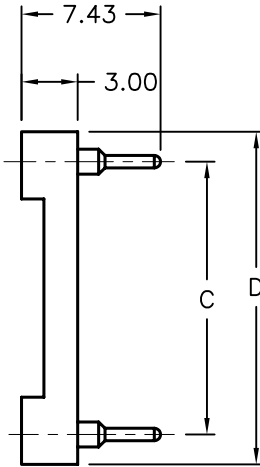
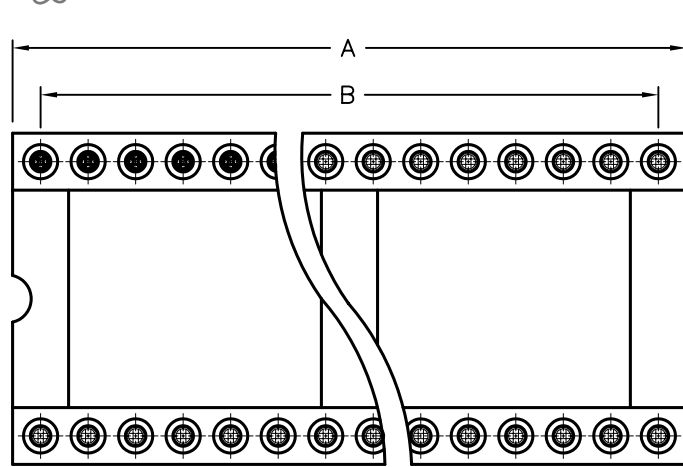
DOC. NO. SPC-F005 \* Effective: 7/8/02 \* DCP No: 1398

DCP #	REV	DESCRIPTION	DRAWN	DATE	CHECKD	DATE	APPRVD	DATE
1878	A	RELEASED	EO	05/02/06	TL	06/19/06	HO	06/19/06



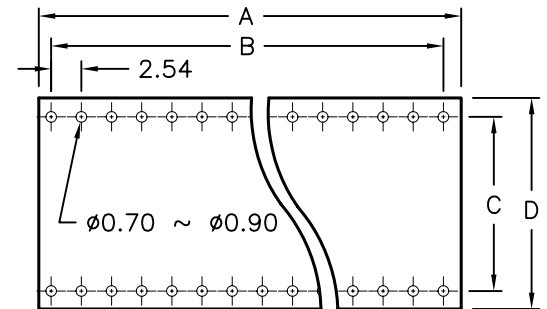
**Technical Data:**

- Material:
  - Pin (outer sleeve): Brass, machined, CuZn38Pb2
  - Clip (contact 4 finger): Beryllium copper, heat treated or PHBZ
  - Plating (outer sleeve): Tin plated: 2um/80u" Nickel, 5um/200u" Tin
  - Plating Clip (contact): 2um/80u" nickel, gold Flash
  - Insulator Body (black): Glass filled thermoplastic Polyester, UL94V-0
- Electrical
  - Current Rating: 3 Amps/contact max.
  - Contact Resistance: 4 milliohms/contact
  - Insulation Resistance: 10,000 Megohms at 500 VAC
  - Rated Voltage: 100 VRMS/150VDC
- Mechanical
  - Operating Temperature (Continuous): -40°C to +105°C  
[-67°F to +105°F]
  - Average insertion force with steel pin of:  $\pm X 0.43\text{mm}/0.017" < 250\text{g}$
  - Average withdrawal force with steel pin of:  $\pm X 0.43\text{mm}/0.017" > 50\text{g}$
  - Mechanical life: min. 200 Cycles
- Environmental Data
  - Solderability (IEC 60068-2-20. Ta): 235°C, 2 sec
  - Resistance to soldering heat (IEC 60068-2-20. Tb)
  - Through hole mount components: 260°C, 10 sec.



SPC P/N	Contact	Dim A	Dim B	Dim C	Dim D
SPC15560	6	7.62	5.08	7.62	10.16
SPC15525	8	10.16	7.62		
SPC15526	14	17.78	15.24		
SPC15527	16	20.32	17.78		
SPC15528	18	22.86	20.32		
SPC15529	20	25.40	22.86		

SPC P/N	Contact	Dim A	Dim B	Dim C	Dim D
SPC15530	24	30.48	27.94	15.24	17.78
SPC15531	28	35.56	33.02		
SPC15562	32	40.64	38.10		
SPC15533	40	50.80	48.26		
SPC15536	48	60.96	58.42		



P.C.B. LAYOUT

DISCLAIMER:  
ALL STATEMENTS AND TECHNICAL INFORMATION CONTAINED HEREIN ARE BASED UPON INFORMATION AND/OR TESTS WE BELIEVE TO BE ACCURATE AND RELIABLE. SINCE CONDITIONS OF USE ARE BEYOND OUR CONTROL, THE USER SHALL DETERMINE THE SUITABILITY OF THE PRODUCT FOR THE INTENDED USE AND ASSUME ALL RISK AND LIABILITY WHATSOEVER IN CONNECTION THEREWITH.

TOLERANCES:  
UNLESS OTHERWISE SPECIFIED, DIMENSIONS ARE FOR REFERENCE PURPOSES ONLY.

DRAWN BY:	DATE:
EKLAS ODISH	05/02/06
CHECKED BY:	DATE:
THOMAS LEE	06/19/06
APPROVED BY:	DATE:
HISHAM ODISH	06/19/06

DRAWING TITLE: <b>PCB Machined IC Sockets</b>			
SIZE	DWG. NO.	ELECTRONIC FILE	REV
A	TA-767	TA-767.DWG	A
SCALE: NTS	U.O.M.: millimeters	SHEET: 1 OF 1	