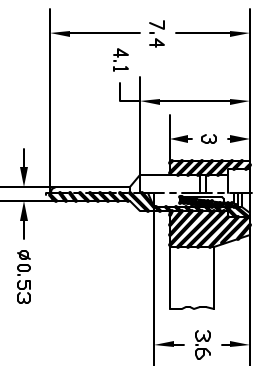
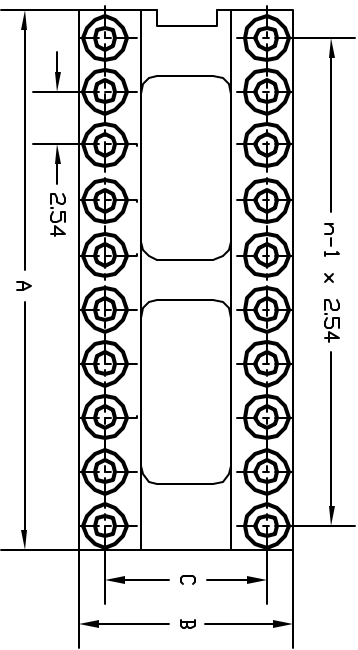


REVISIONS

DCP #	REV	DESCRIPTION	DRAWN	DATE	CHECKD	DATE	APPRVD	DATE
1810	A	Released	JN	10/22/08	JVM	10/22/08	JVM	10/22/08

Machined Dip Socket

- Insertion diameter, 0.40mm min. - 0.56mm max
- Four finger clip with funnel design entry
- Side and end stackable
- Pin 1 polarized



Manufacturer Part Number	Part Options	Number of Contacts
SPC15563	Surface Mount	8
SPC15576	Ultra Low Profile	8
SPC15564	Surface Mount	14
SPC15585	Capacitor	14
SPC15577	Ultra Low Profile	14
SPC15565	Surface Mount	16
SPC15586	Capacitor	16
SPC15578	Ultra Low Profile	16
SPC15580	Ultra Low Profile	18
SPC15587	Capacitor	20
SPC15581	Ultra Low Profile	20
SPC15588	Capacitor	24
SPC15582	Ultra Low Profile	24
SPC15589	Capacitor	28
SPC15583	Ultra Low Profile	28
SPC15590	Capacitor	40
SPC15584	Ultra Low Profile	40

Positions	A	B	C
04	5.08	10.08	7.62
06	7.62	10.08	7.62
08	10.16	10.08	7.62
10	12.70	10.08	7.62
14	17.78	10.08	7.62
16	20.32	10.08	7.62
18	22.86	10.08	7.62
20	25.40	10.08	7.62
22	27.94	10.08	15.24
22*	27.94	10.08	7.62

Positions	A	B	C
24	30.48	17.70	15.24
24*	30.48	10.08	7.62
28	35.56	10.08	15.24
28*	35.56	10.08	7.62
32	40.64	17.70	15.24
36	45.75	17.70	15.24
40	50.80	17.70	15.24
48	60.96	17.70	15.24
50	63.50	25.32	22.86
64	81.28	25.32	22.86

* Add 1 for 7.62 spacing on 22(1), 24(1) and 28(1) positions

Ratings:
 Current: 1A max.
 Voltage: 10 mV - 60 V
 Dielectric strength: > 1000 V (RMS)
 Contact resistance: ≤ 7 mΩ
 Insulation resistance: > 10¹² W
 Air and creepage distance: > 0.6 mm
 PCB thickness: 1.6 mm - 2.0 mm
 PCB hole size: .7 mm - .9 mm

Material:
 Plastic: PBT Glass-filled, UL94V-0
 Sleeve: Turned brass, Flash copper plated, Nickel 2-3µm, Tin 5µm
 Clip: Beryllium-copper, Nickel 2-3µm, Gold 0.25µm
 Temperature range: -55°C / +125°C, 260°C for 5 sec. (solder bath resistant)
 Insertion depth: 2.4 mm min. - 3.9 mm max.
 Insertion diameter: 0.4 mm min. - 0.56 mm max.
 Mechanical life: 100 cycles



DISCLAIMER:
 ALL STATEMENTS AND TECHNICAL INFORMATION CONTAINED HEREIN ARE BASED UPON INFORMATION AND/OR TESTS WE BELIEVE TO BE ACCURATE AND RELIABLE. SINCE CONDITIONS OF USE ARE BEYOND OUR CONTROL, THE USER SHALL DETERMINE THE SUITABILITY OF THE PRODUCT FOR THE INTENDED USE AND ASSUME ALL RISK AND LIABILITY WHATSOEVER IN CONNECTION THEREWITH.

TOLERANCES:
 UNLESS OTHERWISE SPECIFIED, DIMENSIONS ARE FOR REFERENCE PURPOSES ONLY.

DRAWN BY:	DATE:
Jason Nash	10/22/08
CHECKED BY:	DATE:
JVM	10/22/08
APPROVED BY:	DATE:
JVM	10/22/08

DRAWING TITLE:

Machined Dip Socket

SIZE	DWG. NO.	ELECTRONIC FILE	REV
A	Ta-958	Ta-958.dwg	A
SCALE:	NTS	U.D.M., INCHES [MM]	SHEET, 1 OF 1