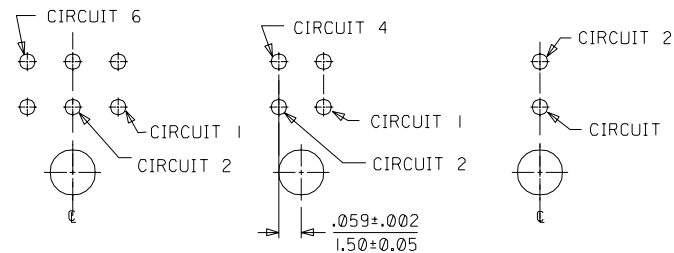


PCB LAYOUT: COMPONENT SIDE  
RECOMMEND PCB THICKNESS: .062/1.57



PCB LAYOUT: 6 CKT HEADER      PCB LAYOUT: 4 CKT HEADER      PCB LAYOUT: 2 CKT HEADER

CKTS	43045		
	A	B	C
02	.262 6.65	NA	NA
04	.380 9.65	.118 3.00	NA
06	.498 12.65	.236 6.00	NA
08	.616 15.65	.354 9.00	.185 4.70
10	.734 18.65	.472 12.00	.303 7.70
12	.852 21.65	.591 15.00	.421 10.70
14	.970 24.65	.709 18.00	.539 13.70
16	1.088 27.65	.827 21.00	.657 16.70
18	1.206 30.65	.945 24.00	.776 19.70
20	1.325 33.65	1.063 27.00	.894 22.70
22	1.443 36.65	1.181 30.00	1.012 25.70
24	1.561 39.65	1.299 33.00	1.130 28.70

	FINISH A	FINISH B	FINISH C
CKTS	MATERIAL NO:	MATERIAL NO:	MATERIAL NO:
02	43045-0200	43045-0201	43045-0202
04	43045-0400	43045-0401	43045-0402
06	43045-0600	43045-0601	43045-0602
08	43045-0800	43045-0801	43045-0802
10	43045-1000	43045-1001	43045-1002
12	43045-1200	43045-1201	43045-1202
14	43045-1400	43045-1401	43045-1402
16	43045-1600	43045-1601	43045-1602
18	43045-1800	43045-1801	43045-1802
20	43045-2000	43045-2001	43045-2002
22	43045-2200	43045-2201	43045-2202
24	43045-2400	43045-2401	43045-2402

NOTES:

1. HOUSING MATERIAL: GLASS FILLED LIQUID CRYSTAL POLYMER, UL94V-0, COLOR: BLACK

TERMINAL MATERIAL: BRASS ALLOY

2. FINISH:

A = .000100/(0.0025) MIN TIN/LEAD (90/10) OVER .000050/(0.0013) NICKEL PLATE.

B = .000015/(0.00038) MIN GOLD IN SELECTIVE AREA; .000050/(0.0013) MIN TIN/LEAD (90/10) ON SOLDER TAILS BOTH OVER .000050/(0.0013) NICKEL PLATE.

C = .000030/(0.00076) MIN GOLD IN SELECTIVE AREA; .000050/(0.0013) MIN TIN/LEAD (90/10) ON SOLDER TAILS BOTH OVER .000050/(0.0013) NICKEL PLATE.

3. PRODUCT SPECIFICATION: PS-43045

4. MATES WITH MICRO FIT (3.0) RECEPTACLE SERIES 43025

5. TRAY PACKAGED : SEE MOLEX DRAWING PK-70873-0313

NI PLATE WAS 30U EC NO. UCR2001-0898 DRAWN: BURLESON 01/04/02 CHK: MUELLER 01/04/02 APPR: EDGLEY 01/04/02	QUALITY SYMBOLS	GENERAL TOLERANCES: (UNLESS SPECIFIED)		SCALE :	DESIGN UNITS	THIRD ANGLE PROJECTION	SHT	REV
	MAJOR	mm	INCH	DRAWN BY & DATE	mm □ INCH □	THIRD ANGLE PROJECTION		REVISE ON CAD ONLY
	CRITICAL	4 PLACES ±0.	±.	CHECKED BY & DATE				
		3 PLACES ±0.	±0.10	MUELLER 00/03/15				

DESCRIPTION	1 PLACE ±0.25	±0.14	APPROVED BY & DATE	EDGLEY 00/03/15
	2 PLACES ±0.25	±0.14		
	3 PLACES ±0.	±0.10		
	4 PLACES ±0.	±.		
	ANGULAR: ± 1/2 °		CAD FILENAME	

TITLE:	MICRO FIT (3.0) DUAL ROW RIGHT ANGLE THRU HOLE HEADER - ASS'Y
MATERIAL NO.	SEE CHART
DRAWING NO.	SD-43045-001
SHEET NO.	1 OF 1

DIMENSIONS:		SHT	REV
mm	INCH		
mm	INCH		
MATERIAL NO. SEE CHART		DRAWING NO. SD-43045-001	SHEET NO. 1 OF 1
THIS DRAWING CONTAINS INFORMATION THAT IS PROPRIETARY TO MOLEX INCORPORATED AND SHOULD NOT BE USED WITHOUT WRITTEN PERMISSION.			