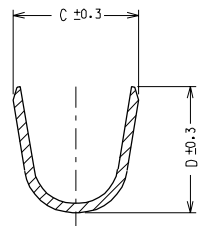


SECTION A - A



SECTION B - B

CODICE P/N	FINITURA PLATING	MATERIALE MATERIAL	SEZ. RAME WIRE RANGE	Ø ISOLANTE INS. RANGE	DIMENSIONI / DIMENSION						
					A	B	C	D	E	F	G
94506 - 0100	greggio/ plain	ottone brass	0.5 - 1.0	2.0 - 3.3	3.0	3.0	4.5	4.5	4.2	2.4	8.3
94506 - 0101	stagnato/ tin				3.8	4.0	5.5	5.5	4.2	2.5	8.5
94506 - 0200	greggio/ plain		1.0 - 2.5	2.7 - 4.3	3.8	4.0	5.5	5.5	4.2	2.5	8.5
94506 - 0201	stagnato/ tin				3.8	4.0	5.5	5.5	4.2	2.5	8.5

IMPIEGATO CON HOUSING 94506-900X
TO BE USED WITH HOUSING P/N 94506-900X

B1	ECN Z7-011 22-07-96 Mod. spessore G.F.	LTR	DIMENSIONS SHOWN (METRIC) INCH UNLESS OTHERWISE SPECIFIED TOLERANCES ANGULAR ± 2° INCH (METRIC)	DRWG BY	REVISE ONLY ON CAD SYSTEM		SH.	REV.		
	B			ECN Z1-129 Agg. art. 94506-01XX 11-09-91 G. F.	F. Gottardo	CADCAM FILENAME CAD FILE 9450600S		THIS DRAWING CONTAINS INFORMATION THAT IS PROPRIETARY TO MOLEX INC AND SHOULD NOT BE USED WITHOUT WRITTEN PERMISSION		
	A			EMESSO DIS. DEFINITIVO ECN Z0-141 11-12-90 G. F.	CHK'D BY	TITLE CAPOCORDA FEMMINA PER MASCHIO 6.3 x 0.8 -SAFELOCK- QIK KONNECT RECEPTACLE FOR 6.3 x 0.8 TABS -SAFELOCK-				
					M. Previato	APP'D BY	MOLEX INCORPORATED		SHEET NO.	DATE
			DESIGN DIMENSION (PRIMARY) <input type="checkbox"/> (MM) <input type="checkbox"/> IN EQUIVALENT DIMENSION (SECONDARY) <input type="checkbox"/> (MM) <input type="checkbox"/> IN.	SCALE	PART NO.		VEDI TABELLA SEE CHART	DWG NO.	SD 94506 - OXXX	SIZE B
				5 : 1			1 / 1	14-12-89		