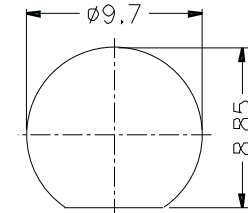
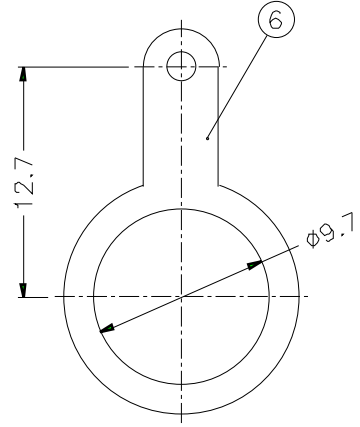
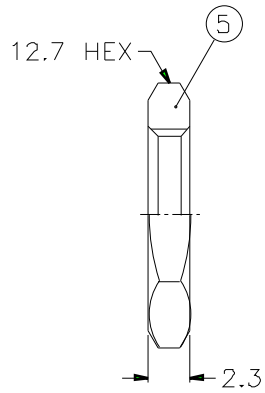


REVISIONS		
ISS	ZONE	DESCRIPTION\PER REQUEST\DATE



RECOMMENDED MOUNTING HOLE



1. MAX. PANEL THICKNESS=3.2mm

- NOTES. FINISH (PLATING THICKNESS IN MICRO-INCHES)
- 1. BRASS PER QQ-B-626
 - 2. BRASS PER QQ-B-613
 - 3. NICKEL PL. 100 MIN. THICK OVER COPPER STRIKE
 - 4. PHOSPHOR BRONZE PER QQ-B-750
 - 5. GOLD PL. 3 MIN. THICK OVER NICKEL PL. 100 MIN. THICK OVER COPPER STRIKE

					DIMENSIONS ARE IN MILLIMETERS			PART NO. T6351B1-ND3G-50		Amphenol	
					UNLESS OTHERWISE SPECIFIED TOLERANCES			APPROVED	DATE		
6	SOLDER TAG	NOTE 2	NOTE 3	1	B7310-7	0.5-6	= ±0.2		10-11-01'	TNC BULKHEAD RECEPT. JACK	
5	HEX NUT	NOTE 1	NOTE 3	1	HN127-3/8-32 X23	6-30	= ±0.4	CHECKED	10-11-01'	DRAWING NO.	
4	LOCK WASHER	NOTE 2	NOTE 3	1	LW-127/97X05	30-120	= ±0.6	DRAWN	10-11-01'	KJ-T6351B1-ND3G-50	
3	CONTACT PIN	NOTE 4	NOTE 5	1	B7310-3-50	120-315	= ±1			ITEM NO.	
2	INSULATOR	DELRIN	NATURAL	1	B7310-2-50-C	315-1000	= ±1.6				
1	BODY	NOTE 1	NOTE 3	1	T7310-1	1000-2000	= ±2.4		10-11-01'		
NO.	DESCRIPTION	MATERIAL	FINISH	Q'TY	DRAWING NO	SCALE	2.5/1	ISSUE	A	FILE NO	