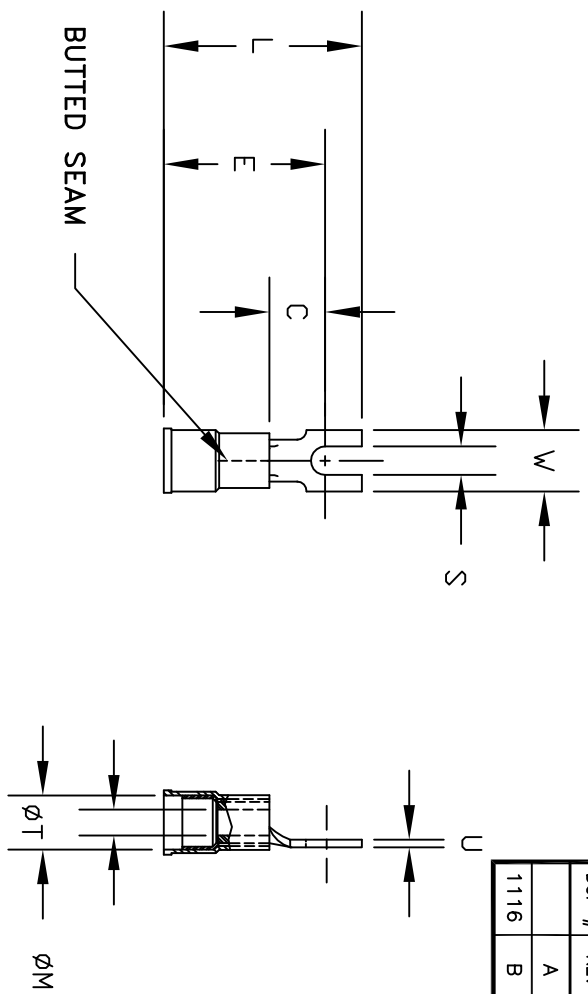


ALL RIGHTS RESERVED. NO PORTION OF THIS PUBLICATION, WHETHER IN WHOLE OR IN PART CAN BE REPRODUCED WITHOUT THE EXPRESS WRITTEN CONSENT OF SPC TECHNOLOGY.

REVISIONS		DOC. NO. SPC-F005	* Effective: 12/21/98		* DCP No: 880	
DCP #	REV	DESCRIPTION	DRAWN	DATE	CHECKD	DATE
	A	Redrawn in Autocad	JAP	11/27/91		
1116	B	Drawing was CBS-DY-****	JWM	6/11/01	JC	6/20/01



**NOTES:**

1. MATERIAL: ELECTRO-TIN PLATED COPPER WITH NYLON 6/6 SLEEVE  
FLAMMABILITY: UL94V-2
2. CONTINUOUS OPERATING TEMPERATURE: -40°F (-40°C) TO 167°F (75°C)
3. VOLTAGE RATING: 600 V
4. TO BE FREE OF BURRS.

PART NUMBER	WIRE RANGE (AWG)	STUD SIZE	L	W	E	C	S	T	M	U	COLOR
CBS-DY-1006	12 - 10	#6 .138	1.03	.32	.84	.29	.148	.135	.250	.040	YELLOW
CBS-DY-1010	12 - 10	#10 .190	1.03	.32	.84	.29	.200	.135	.250	.040	YELLOW
CBS-DY-1406	16 - 14	#6 .138	.86	.30	.71	.25	.148	.090	.170	.030	BLUE
CBS-DY-1408	16 - 14	#8 .164	.86	.30	.71	.25	.174	.090	.170	.030	BLUE
CBS-DY-1410	16 - 14	#10 .190	.86	.30	.71	.25	.200	.090	.170	.030	BLUE
CBS-DY-1804	22 - 18	#4 .112	.84	.25	.69	.25	.120	.070	.145	.030	RED
CBS-DY-1806	22 - 18	#6 .138	.84	.25	.69	.25	.148	.070	.145	.030	RED
CBS-DY-1808	22 - 18	#8 .164	.84	.30	.69	.25	.174	.070	.145	.030	RED
CBS-DY-1810	22 - 18	#10 .190	.84	.30	.69	.25	.200	.070	.145	.030	RED



DISCLAIMER: ALL STATEMENTS AND TECHNICAL INFORMATION CONTAINED HEREIN ARE BASED UPON INFORMATION AND/OR TESTS WE BELIEVE TO BE ACCURATE AND RELIABLE SINCE CONDITIONS OF USE ARE BEYOND OUR CONTROL. THE USER SHALL DETERMINE THE SUITABILITY OF THE PRODUCT FOR THE INTENDED USE AND ASSUME ALL RISK AND LIABILITY WHATSOEVER IN CONNECTION THEREWITH.



**SPC TECHNOLOGY**



OSHA Acceptable

SPC-F005.DWG

Tolerances: Unless Otherwise Specified:		DRAWING TITLE:	
.X = ±.015	.XX = ±.010	Nylon Insulated Block Fork Terminals	
.XXX = ±.005		SIZE	DWG. NO.
		A	TA-351
APPROVED BY:	DATE:	SCALE:	NTS
J Liska	12/2/91		
DRAWN BY:	DATE:	ELECTRONIC FILE	REV
JC	3/7/91	TA-351.dwg	B
CHECKED BY:	DATE:	SHEET: 1 OF 1	
JOHN COLE	12/2/91		