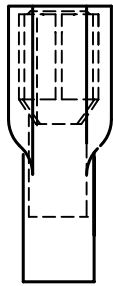


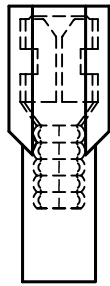
DCP #	REV	DESCRIPTION	DRAWN	DATE	CHECKD	DATE	APPRVD	DATE
1199	B	Redrawn and renamed	JWM	11/9/01	JC	11/26/01	JC	11/26/01
1745	C	UL No. Corrected	JWM	7/6/05	HO	7/6/05	HO	7/6/05

NOTES:

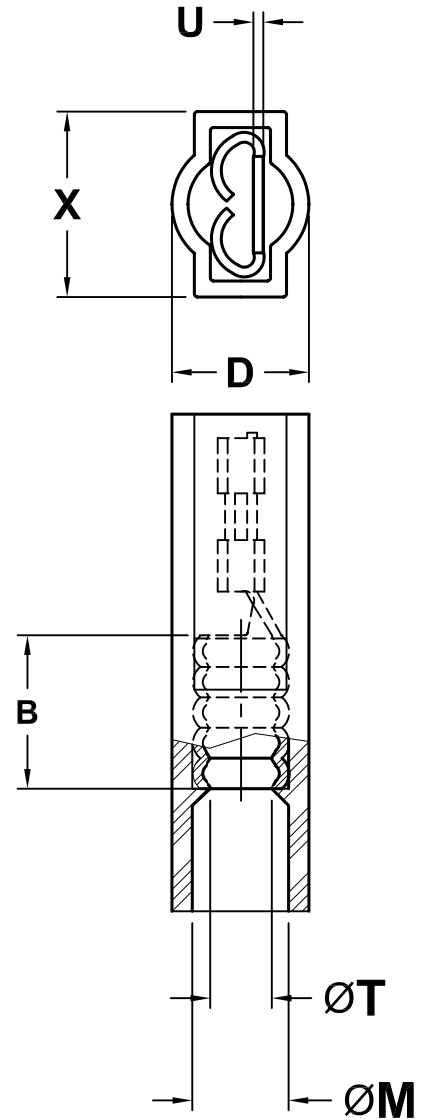
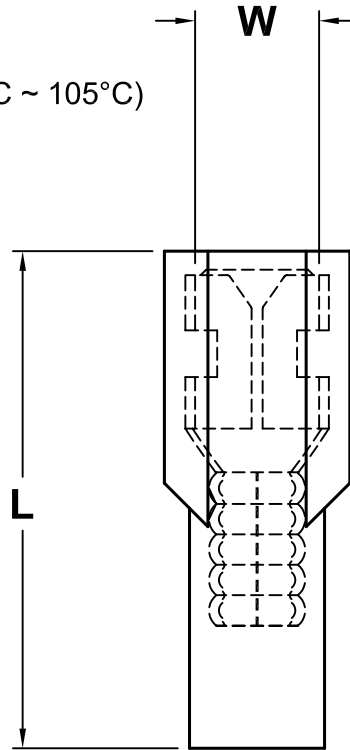
1. MATERIAL: ELECTRO-TIN PLATED COPPER WITH NYLON 6/6 FULL SLEEVE.
2. FLAMMABILITY: UL94V-2
3. VOLTAGE RATING: 600 V
4. OPERATING TEMP: -40°F to 221°F (-40°C ~ 105°C)



Style 1



Style 2



OSHA Acceptable

PART NUMBER	WIRE RANGE (AWG)	MATES WITH MALE TAB WIDTH (W') X THICKNESS	L	X	D	B	T	M	U	COLOR	STYLE
CFS-TF-1025	12-10	.250 x .032	.99	.39	.32	.25	.148	.250	.020	YELLOW	1
CFS-TF-1418	16-14	.187 x .020	.81	.30	.23	.25	.085	.145	.020	BLUE	2
CFS-TF-1425	16-14	.250 x .032	.91	.37	.23	.25	.080	.170	.020	BLUE	1
CFS-TF-1818	22-18	.187 x .020	.81	.30	.23	.25	.085	.145	.020	RED	2
CFS-TF-1825	22-18	.250 x .032	.91	.37	.23	.25	.080	.170	.020	RED	1
CFS-TF-2012 †	26-20	.110 x .020	.66	.22	.15	.13	.055	.093	.012	YELLOW	1

SPC-F004.DWG

† NOT UL LISTED OR CSA CERTIFIED

<b>TOLERANCES:</b>  Tolerances: Unless Otherwise Specified: .X = ±.015 .XX = ±.010 .XXX = ±.005	DRAWN BY: JC	DATE: 3/11/91	DRAWING TITLE: <b>Fully Insulated Butted Seam Female Disconnects</b>			
	CHECKED BY: JOHN COLE	DATE: 12/10/91	SIZE <b>A</b>	DWG. NO. <b>TA-443</b>	ELECTRONIC FILE <b>TA-443.dwg</b>	REV <b>C</b>
	APPROVED BY: John Liska	DATE: 12/10/91	SCALE: NTS		U.O.M.: INCHES [mm]	SHEET: 1 OF 1