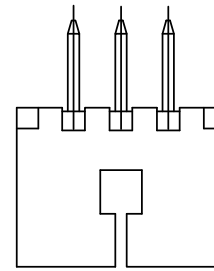
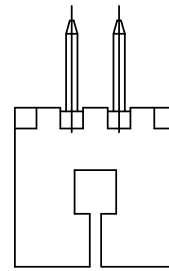
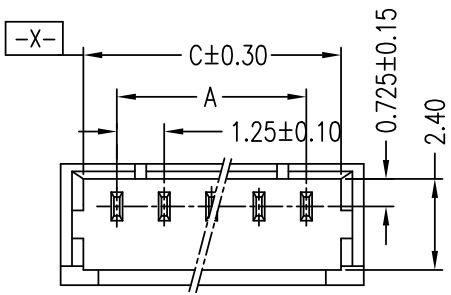


A

B

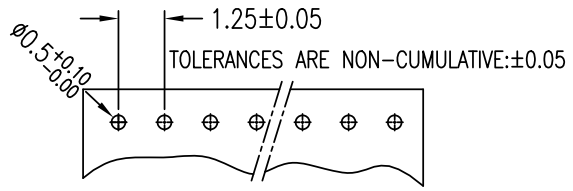
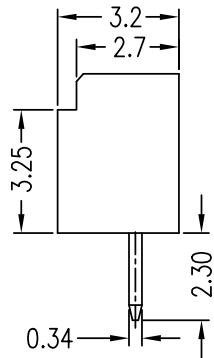
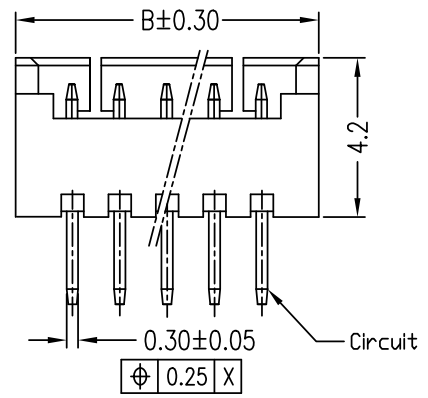
C

D



2 POS

3 POS



P.C. BOARD LAYOUT  
(PCB THK=0.8)

NOTES

- SPECIFICATIONS  
Current Rating: 1A AC,DC  
Voltage Rating: 125V AC,DC  
Temperature Range: -40°C ~ +105°C  
Contact Resistance: 20mΩ Max.  
Insulation Resistance: 100MΩ Min.  
Withstanding Voltage: 500V AC/minute
  - Material & finish:  
Housing: Natural Thermoplastic, UL94V-0  
Contact and metal hold-down: Phosphor Bronze  
Plating of contact: Matte Tin or gold plating over Nickel
  - Crimping application hand tool P/N: 10118656-1000
  - Ordering Information & Dimensions:  
10114829- X X X XX LF
- Material \_\_\_\_\_ LF: See note A  
1: LCP \_\_\_\_\_ pin counts from 02~15
- Plating \_\_\_\_\_ Packaging \_\_\_\_\_  
0: Matte Tin \_\_\_\_\_ 1: Tape & Reel  
1: Gold Flash \_\_\_\_\_

Part No.	Dimensions			
	POS	A	B	C
10114829-xxx02LF	2	1.25±0.10	4.25	3.05
10114829-xxx03LF	3	2.50±0.10	5.50	4.30
10114829-xxx04LF	4	3.75±0.10	6.75	5.55
10114829-xxx05LF	5	5.00±0.10	8.00	6.80
10114829-xxx06LF	6	6.25±0.15	9.25	8.05
10114829-xxx07LF	7	7.50±0.15	10.50	9.30
10114829-xxx08LF	8	8.75±0.15	11.75	10.55
10114829-xxx09LF	9	10.00±0.15	13.00	11.80
10114829-xxx10LF	10	11.25±0.20	14.25	13.05
10114829-xxx11LF	11	12.50±0.20	15.50	14.30
10114829-xxx12LF	12	13.75±0.20	16.75	15.55
10114829-xxx13LF	13	15.00±0.20	18.00	16.80
10114829-xxx14LF	14	16.25±0.20	19.25	18.05
10114829-xxx15LF	15	17.50±0.20	20.50	19.30

Note A: The LF means RoHS compliance, the housing will withstand exposure to peak temperature 260 degree C for 5 sec in the IR re-flow process.



Copyright FCI.

rev	ecn no	dr	date
A	T10-0145	J H	12/1/10
B	ELX-N-011322	J.Z	2012-04-17

www.fciconnect.com		surface 6.4 ISO 1302	tolerance std ISO 406 ISO 1101	projection MM	MM
TOLERANCES UNLESS OTHERWISE SPECIFIED		ANGULAR	LINEAR	size A4	Scale 1.000
Dr	JASON HSU	12/1/10	0.X	±0.25	ECN ELX-N-011322
Eng	JASON HSU	12/1/10	0.XX	±0.15	Spec ref
Chr	GARY HSIEH	12/1/10	0.XXX	-	
Appr	JOSEPH HSIA	12/1/10	Product family WTB		
FCI		title WT B 1.25MM WAFER 180° DIP		dwg no 10114829	Rev. B
		catalog no		CUSTOMER	sheet 1 of 1