



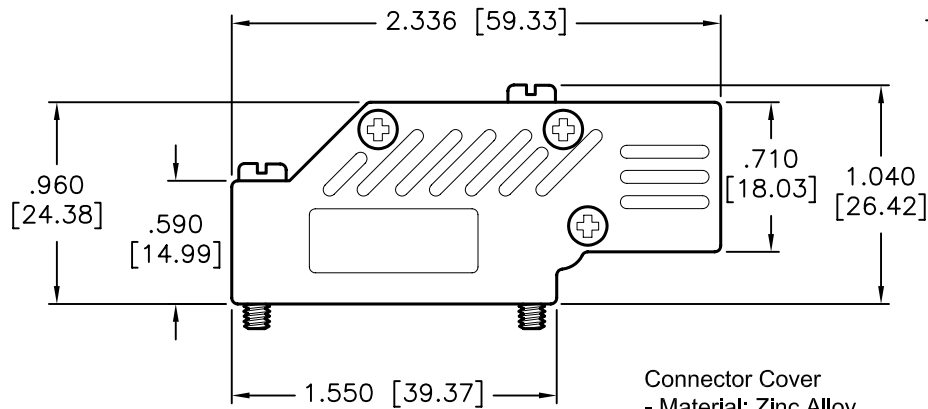
ALL RIGHTS RESERVED. NO PORTION OF THIS PUBLICATION, WHETHER IN WHOLE OR IN PART CAN BE REPRODUCED WITHOUT THE EXPRESS WRITTEN CONSENT OF SPC TECHNOLOGY.

SPC-F005.DWG

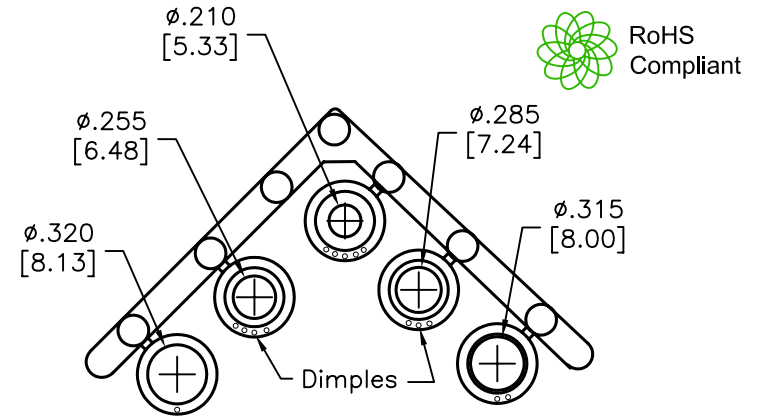
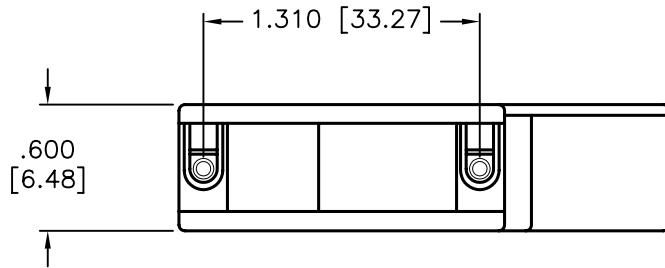
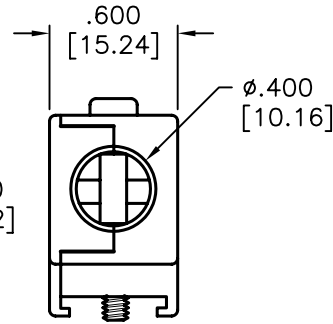
REVISIONS

DOC. NO. SPC-F005 * Effective: 7/8/02 * DCP No: 1398

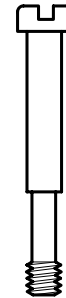
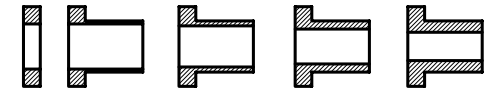
DCP #	REV	DESCRIPTION	DRAWN	DATE	CHECKD	DATE	APPRVD	DATE
1789	A	RELEASED	DCM	9/15/06	JWM	10/11/06	HO	10/11/06



Connector Cover
- Material: Zinc Alloy
- Finish: Nickel Plated



Compression Inserts
Material: Thermoplastic
Color: Black
Durometer: 75±5 Type A Per ASTM D2240



#4-40 x 1.140", Slotted Captive
Screw, Low Carbon Steel,
Nickel Plated
(1 Ea.)



#4-40 x 0.770", Slotted Captive
Screw, Low Carbon Steel,
Nickel Plated
(1 Ea.)



#2-56 Phillips Head Machine
Screw, Stainless Steel
(3 Ea.)

DISCLAIMER:
ALL STATEMENTS AND TECHNICAL INFORMATION CONTAINED HEREIN ARE BASED UPON INFORMATION AND/OR TESTS WE BELIEVE TO BE ACCURATE AND RELIABLE. SINCE CONDITIONS OF USE ARE BEYOND OUR CONTROL, THE USER SHALL DETERMINE THE SUITABILITY OF THE PRODUCT FOR THE INTENDED USE AND ASSUME ALL RISK AND LIABILITY WHATSOEVER IN CONNECTION THEREWITH.

TOLERANCES:

UNLESS OTHERWISE
SPECIFIED,
DIMENSIONS ARE
FOR REFERENCE
PURPOSES ONLY.

DRAWN BY:

Dan McVicker

DATE:

9/15/06

CHECKED BY:

Jeff McVicker

DATE:

10/11/06

APPROVED BY:

Hisham Odish

DATE:

10/11/06

DRAWING TITLE:

15 Pin, Right Angle, Low Profile D-Sub Cover

SIZE

A

DWG. NO.

SPC20349

ELECTRONIC FILE

84K8882.dwg

REV

A

SCALE: NTS

U.O.M.: INCHES [mm]

SHEET: 1 OF 1